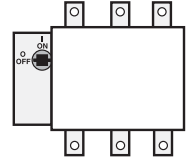




Other configurations

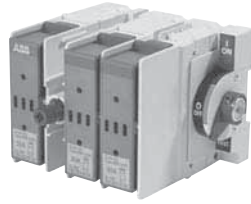
Side operated ①

30A – 400A, CSA fuse class J,CC,T



For a complete assembly,
please select one of each:

- 1 switch
- 1 handle
- 1 shaft
- 1 terminal lug



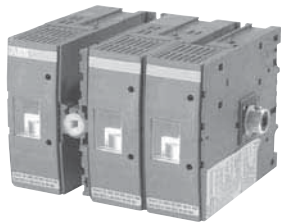
OS30FA_S_



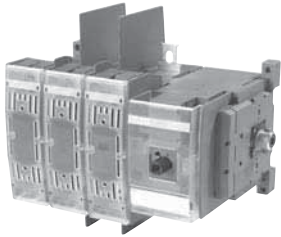
OXP6X210



OHY65J6



OS60JS30



OS100JS30



OETL-ZX74



OXP12X325



OZXA-25

Side operated switches — 3 pole

CSA general purpose amp rating	CSA fuse type 600V	Maximum horsepower rating					Catalog number	List price
		Three phase						
		200V	208V	240V	480V	600V		
30	J	5	7.5	7.5	15	20	OS30FAJS30	
30	CC	5	7.5	7.5	15	20	OS30FACCS30	
60	J	15	15	15	30	50	OS60GJS30	
100	J [ⓐ]	25	25	30	60	75	OS100GJS30	
200	J [ⓐ]	50	50	60	125	150	OES200J3-S	
400	J [ⓐ]	100	125	125	250	350	OES400J3-S	

Handles

CSA/NEMA type	IEC type	Color	Length mm	Marking	Defeatable	Padlockable	Catalog number	List price
For use with OS30A S30								
1, 3R, 12	IP65	Black	2.6/65	OFF/ON	Yes	Yes	OHB65J6	
1, 3R, 12	IP65	Red/Yel	2.6/65	OFF/ON	Yes	Yes	OHY65J6	
For use with OS60GJS30 & OS100GJS30								
1, 3R, 12	IP65	Black	3.1/80	OFF/ON	Yes	Yes	OHB80J6	
1, 3R, 12	IP65	Red/Yel	3.1/80	OFF/ON	Yes	Yes	OHY80J6	
For use with OES200J3-S & OES400J3-S								
1, 3R, 12	IP65	Black	4.9/145	OFF/ON	Yes	Yes	OHB145J12	
1, 3R, 12	IP65	Red/Yel	4.9/145	OFF/ON	Yes	Yes	OHY145J12	
1, 3R, 12	IP65	Metal	4.9/145	OFF/ON	No	Yes	OETL-ZX74	

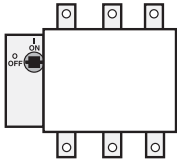
Shafts

For use on :	Length mm	Description	Catalog number	List price
OS30FAJS30 TO OS100GJS30	170	6 x 6mm	OXP6X210	
OES200J3-S & OES400J3-S	325	12 x 12mm	OXP12X325	

Terminal lug kits

For use on:	Wire size	Weight	Wire type	Lugs per kit	Catalog number	List price
OS30AJS30 & OS30ACCS30	#18 – 8	—	Cu	—	Integral	—
OS60GJS30	#14 – 4	—	Cu	—	Integral	—
OS100GJS30	#14 – 2/0	0.43	Cu/Al	6	OZXA-24	
OES200J3-S	#6 – 300 kcmil	0.93	Cu/Al	6	OZXA-25	
OES400J3-S	#2 – 600 kcmil	3.50	Cu/Al	6	OZXA-26	

ⓐ J type fuse clips are standard. If 600V Type "T" fuse clips are desired, please order the "T" type fuse adapter kit.



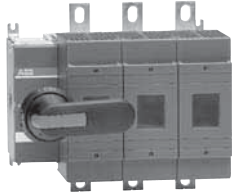
Flange operated disconnect switches

Cable operated fusible

30A – 200A



For a complete assembly, please select one each of the following



OS200J03P



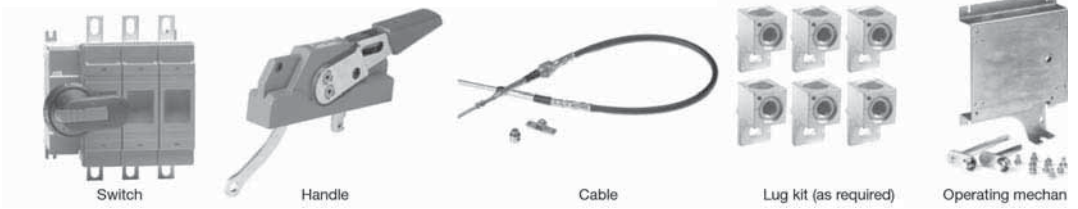
OHF1C12



OXC1L36



OZXA-200



30A - 800A fusible disconnect switches

CSA general purpose amp rating A	CSA/UL fuse type 600V	Maximum horsepower rating				Poles	Catalog number	List price
		Three phase						
		200V-208V	240V	480V	600V			
30	CC	5/7.5	7.5	15	20	3	OS30FACC12	
30	J	5/7.6	7.6	15	20	3	OS30FAJ12	
60	J	15	15	30	50	3	OS60GJ12	
100	J/T	25	30	60	75	3	OS100GJ30	
200	J/T	50	60	125	150	3	OS200J30	

Operating mechanisms

For use on:	Catalog number	List price
OS30FAJ12, OS30FACC12 OS60GJ12 OS100GJ30, OS200J30	MKCS2 MKCS3 MKCS4	

Flange handle

For use with:	Nema Type	Catalog number	List price
OS30_ - OS200J03_	1, 3R, 12	OHF1C12	
	1, 3R, 4, 4X, 12	OHF1C4	

Cable

For use with:	Cable length (inches)	Catalog number	List price
OS30_ - OS200J03_	36	OXC1L36	
	48	OXC1L48	
	60	OXC1L60	
	72	OXC1L72	
	84	OXC1L84	
	96	OXC1L96	
	108	OXC1L108	

Terminal lug kit

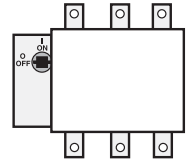
For use on:	Wire size	Wire type	Lugs/kit	Catalog number	List price
OS30_ OS60GJ12 OS100GJ30	#18 - 8/0	Cu	--	Integral	
	#14 - 4	Cu	--	Integral	
	#14 - 2/0	Cu/Al	6	OZXA-24	
OS200J30	#4 - 300 kcmil	Cu/Al	6	OZXA-200	
	(6) #4 - 6 AWG	Cu/Al	3	OZXA-206S	



Other configurations

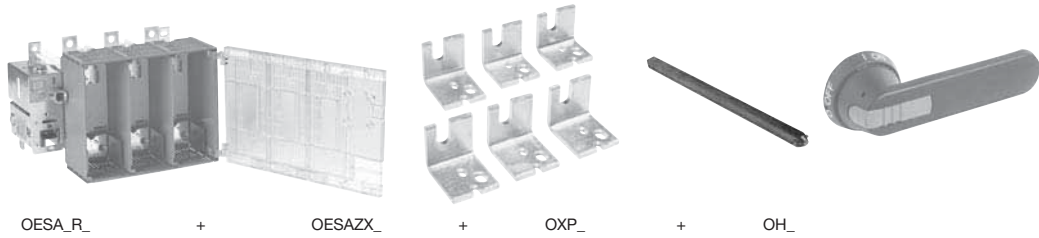
High speed fuse pattern

Special type fuses



For a complete assembly,
please select one of each:

- 1 switch body
- 1 adapter kit
- 1 shaft
- 1 handle



Selecting switch bodies and adapter kits

Please select switch body and adapter kit according to your fuses. Switch body alone can not be used — an adapter kit is always needed.

Switch bodies – 200A through 800A

CSA general purpose amp rating	Maximum horsepower rating				Max. allowed fuse power dissipation at rated current	Catalog number	List price
	Three phase						
	208V	240V	480V	600V			
3 pole							
200	50	60	125	150	22W	OES200R03	
400	125	125	250	350	45W	OES400R03	
600	150	200	400	500	60W	OES600R03	
800	200	250	500	600	65W	OES800R03	
4 pole							
200	50	60	125	150	22W	OES200R04	
400	125	125	250	350	45W	OES400R04	
600	150	200	400	500	60W	OES600R04	
800	200	250	500	600	65W	OES800R04	

Fuse adapter kits — for switches OES200 - OES400

Fuse standard	For 3 pole switch		For 4 pole switch	
	Catalog number	List price	Catalog number	List price
American standard	OESAZX1-S4 OESAZX1-S5		OESAZX1-S4/4 OESAZX1-S5/4	
DIN80 (DIN43653) DIN 80 sizes 00 and 000 (DIN 43653)	OESAZX1-S7 OESAZX1-S9		OESAZX1-S7/4 OESAZX1-S9/4	
DIN110 (DIN43653) DIN140 (DIN43653)	OESAZX1-S2 OESAZX1-S6		OESAZX1-S2/4 OESAZX1-S6/4	
Flush-end, 70 mm body Flush-end, 50 mm body	OESAZX1-S8 OESAZX1-S3		OESAZX1-S8/4 OESAZX1-S3/4	
French French with micro switches	OESAZX1-S10 OESAZX1-S11		OESAZX1-S10/4 OESAZX1-S11/4	

Fuse adapter kits — for switches OES600 - OES800

Fuse standard	For 3 pole switch		For 4 pole switch	
	Catalog number	List price	Catalog number	List price
American standard DIN80, DIN 110, DIN 140 (DIN43653) Flush-end, 50 mm and 70 mm body	OESAZX2-S4 OESAZX2-S2 OESAZX2-S3		OESAZX2-S4/4 OESAZX2-S2/4 OESAZX2-S3/4	
French French with micro switches	OESAZX2-S5 OESAZX2-S6		OESAZX2-S5/4 OESAZX2-S6/4	

Handles and shafts — see pages 2.14

Selecting the right fusible disconnect for HSF fuses may be difficult. Due to CSA restrictions it is not possible to give a general fuse selection table for your use. Therefore we ask you to contact ABB, in application issues. Information needed is nominal current of the application and catalog number of the fuse

