

AF40N2 & AF80N3 3-pole NEMA rated contactors

Sizes 2 & 3

AC / DC operated with 1 N.O. + 1 N.C. auxiliary contacts



AF40N2-30-11



AF80N3-30-11

Description

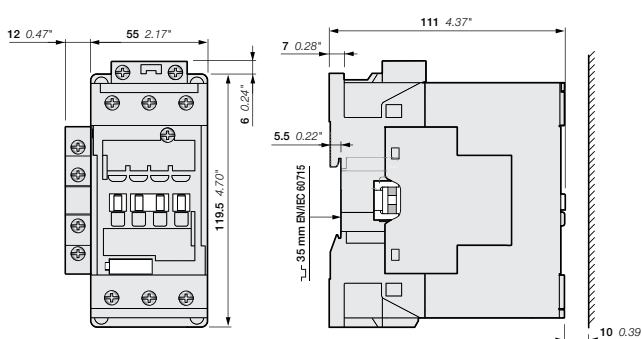
- AF40N2 and AF80N3 NEMA rated contactors are mainly used for controlling 3-phase motor circuits up to 575V AC. These contactors are of the block type design with 3 main poles.
- Control circuit: AC or DC operated with electronic coil interface accepting a wide control voltage range (e.g. 100...250 V AC and DC), only 4 control voltage ranges covering 24...500V 50/60 Hz and 20...500 V DC
- can manage large control voltage variations
- reduced panel energy consumption
- very distinct closing and opening.
- Built-in surge suppression
- Add-on auxiliary contact blocks for front or side mounting and a wide range of accessories.

Ordering details

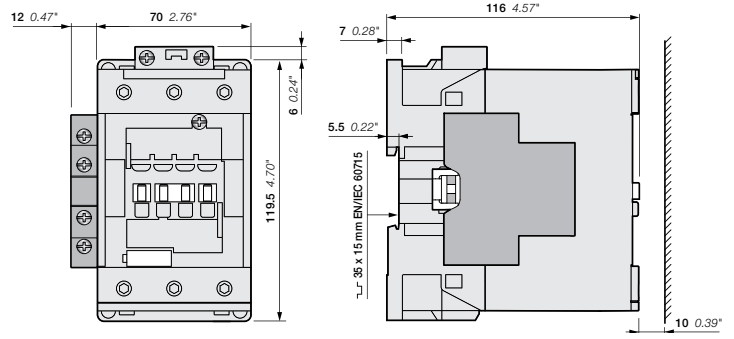
NEMA				Rated control circuit voltage		Auxiliary contacts fitted	Catalog number	Global reference code (2)	Weight Pkg (1 pce)
Size	Continuous current	3-phase motor rating		Uc min. ... Uc max.					
	A	230 V	460/575V	V 50/60 Hz	V DC				kg
2	45	15	25	24...60	-		1 1	AF40N2-30-11-41	
				24...60	20...60 (1)	1 1	AF40N2-30-11-11		1,010
				48...130	48...130	1 1	AF40N2-30-11-12		1,010
				100...250	100...250	1 1	AF40N2-30-11-13		1,000
				250...500	250...500	1 1	AF40N2-30-11-14		1,000
3	90	30	50	24...60	-	1 1	AF80N3-30-11-41		1,260
				24...60	20...60 (1)	1 1	AF80N3-30-11-11		1,260
				48...130	48...130	1 1	AF80N3-30-11-12		1,260
				100...250	100...250	1 1	AF80N3-30-11-13		1,210
				250...500	250...500	1 1	AF80N3-30-11-14		1,210

(1) AF.-30-...-11 not suitable for direct control by PLC-output.
 (2) Available in the US and Canada only.

Main dimensions mm, inches



AF40N2



AF80N3