

Please Read Instruction Carefully Before Installation!

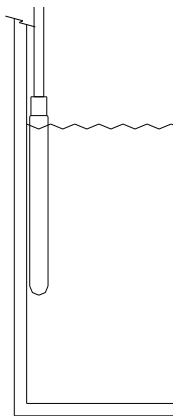
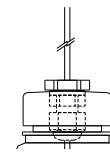
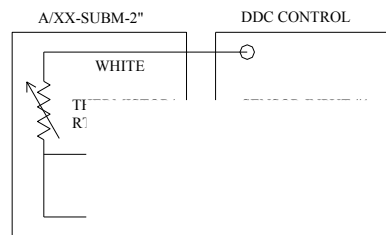
■ Applications

A few of the most common applications are listed below:

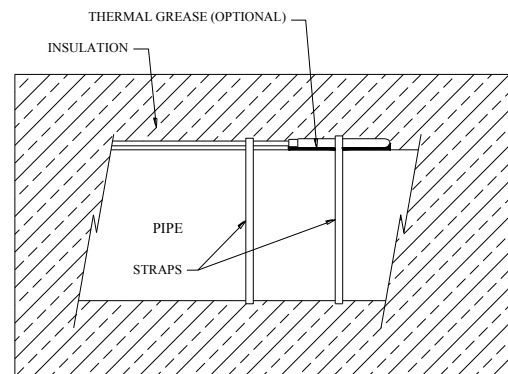
- Monitoring Freezers or Glycol Temperatures
- Monitoring Cooling Towers and Tank Temperatures
- For Direct Fluid Insertion

■ Installation

The A/XX-FRZ2” probe temperature sensors are single point temperature sensors with Stainless Steel (304 or 316 Series) probes. Use care when installing the 2” probes. Pay attention not to kink the cable. The red/red/white wires should be securely connected to the controller. When using the A/XX-FRZ2” in a strap-on application, make sure to securely fasten the probe to the outside surface of the pipe. A loose attachment could affect the accuracy. To ensure good contact, thermal grease is recommended. Insulating the sensor will help to eliminate the effects that the air temperature has on the sensor tie the cable, depending upon the



Tank Application



Strap-on Application

■ **Troubleshooting**

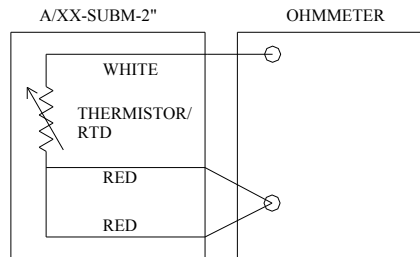
Sensor reads 0 ohms or very low

Sensor or wires are shorted together
Verify that all three of the leads are not shorted to the probe.

Sensor reads infinity or very high
Erratic readings

Sensor or wires are cut or open
Bad wire connections - Condensation or Moisture problem

specified
nagement
ohmmeter
the given



■ **WEEE Directive**

At the end of their useful life the packaging and product should be disposed of via a suitable recycle centre. Do not dispose of with household waste. Do not burn.

