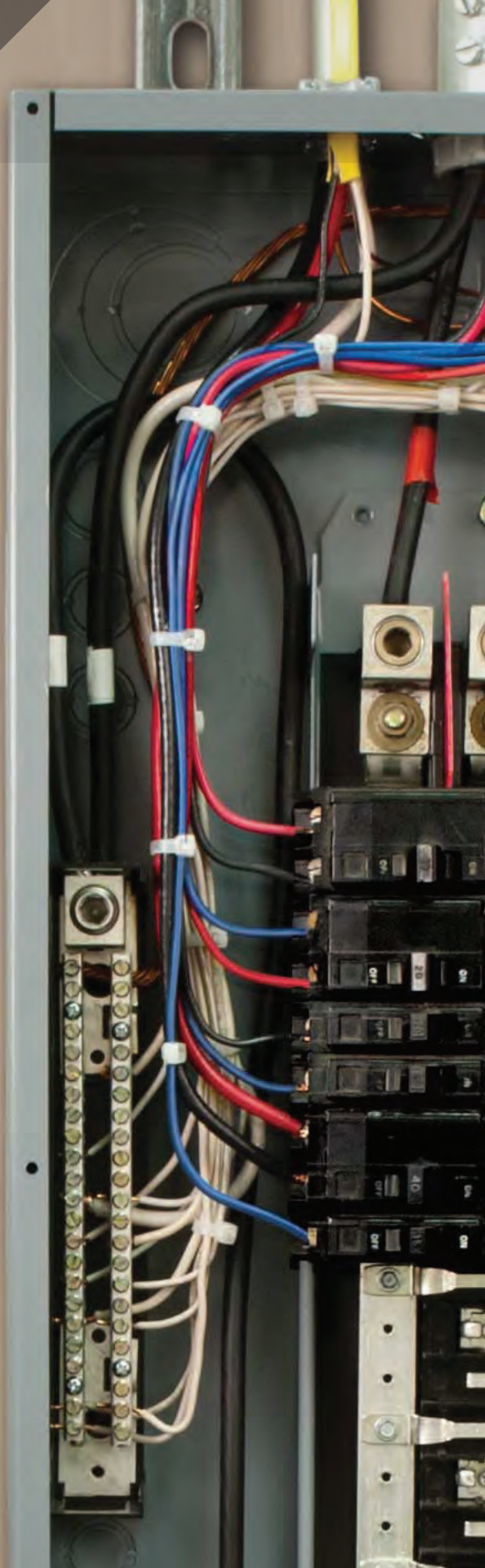


DATA LOGGERS



DATA LOGGERS

SIMPLE LOGGER® II TRMS CLAMP-ON CURRENT

MODEL CL601

Designed for plant and field service applications and for use in harsh environments



SPECIFICATIONS

MODEL	CL601
ELECTRICAL	
Channels	One
Input	Split CT - AC Current
Measurement Range	0 to 600Aac
Resolution	0.1A
Accuracy (50/60Hz)	0 to 5A: unspecified 5 to 50A: $\pm(1\% \text{ of Reading} + 1A)$ 50 to 400A: $\pm(1\% \text{ of Reading} + 0.5A)$ 400 to 600A: $\pm(3\% \text{ of Reading} + 1A)$
Sample Rate	64 samples/cycle
Storage Rate	Programmable from 8 every second to 1 every day
Storage Modes	Start/Stop, FIFO, Extended Recording Mode (XRM™)* and Alarm
Recording Length	15 minutes to 8 weeks, programmable using DataView®
Memory	240,000 measurements (512KB) - The recorded data is stored in non-volatile memory and will be retained even if the battery is low or removed.
Communication	USB 2.0 optically isolated
Power Source	2 x 1.5V AA-cell Alkaline batteries (included)
Battery Life	100 hours to >45 days (dependent on sample rate and recording length)
MECHANICAL	
Dimensions	9.25 x 4.0 x 1.63" (235 x 102 x 41mm)
Max Conductor Size	1 conductor - Ø 1.42" (36mm) 2 conductor s- Ø 1.00" (25mm) each
Weight (with battery)	171oz (485g)
Case	UL94-V0
Vibration	IEC 68-2-6 (1.5mm, 10 to 55Hz)
Shock	IEC 68-2-27 (30G)
Drop	IEC 68-2-32 (1m)

*EXTENDED RECORDING MODE (XRM™)

This unique recording mode provides the opportunity to continuously record over long periods of time by reducing the stored samples of the oldest data and maintaining matching resolution for the newest data. Each time the memory fills up using XRM™ every other of the oldest stored samples is discarded making room for newer samples. This process continues until the recording is manually stopped.



FEATURES

- 0 to 600Arms
- True RMS measurements
- Self contained, no exposed connections
- Overload indication
- Optically isolated USB 2.0 communication cable included
- One button operation
- Alarm function
- 5 LED indicators quickly and clearly display logger status
- Powered by standard Alkaline batteries
- Includes FREE DataView® software for data retrieval, real-time display, analysis and report generation
- EN 61010-1; 300V CAT IV, 600V CAT III

APPLICATIONS

- Machine load monitoring
- HVAC troubleshooting
- Load profiling
- Electrical troubleshooting
- Start-Stop time stamping

CATALOG NO. DESCRIPTION

2126.01 Simple Logger® II Model CL601 (1-Channel, TRMS, Clamp-On, 0 to 600Aac, DataView® software)

DATA LOGGERS

SIMPLE LOGGER® II 4-CHANNEL BLUETOOTH EDITION

4-CHANNEL AMPFLEX® MODEL AL834

Four channel logger with 24" long flexible sensors capable of wrapping around an 8" conductor



cover open cover closed

FEATURES

- Includes four integral AmpFlex® flexible current probes that will measure up to 3000A TRMS with 0.5A resolution
- Dual range 300/3000A user selectable per channel
- 64 samples per cycle
- Programmable storage rates from 125ms to 1 per day
- 4 user selectable storage modes
- Stores up to 1,000,000 measurements in non-volatile memory
- Powered by standard Alkaline batteries for a period of up to 180 days
- Lightweight, compact and watertight
- 6 LED indicators quickly and clearly display logger status
- Wireless Bluetooth data communication (Class 2 Bluetooth module included)
- Includes FREE DataView® software for data storage, real-time display, analysis and report generation
- EN 61010-1; 600V CAT IV, 1000V CAT III

APPLICATIONS

- Single/Split-phase and 3-phase load monitoring
- Neutral and ground current monitoring
- Intermittent problem detection
- Harmonic current monitoring using DataView® software
- Machine load monitoring
- Fault current detection
- Load profiling

SPECIFICATIONS

MODEL	AL834	
ELECTRICAL		
Channels	Four	
Input	Captive AmpFlex® AC Current Flexible Sensors	
Range	5 to 300Aac	15 to 3000Aac
Accuracy (50/60Hz)	0 to 5A unspecified 5 to 300A: ±(1% of Reading + 0.5A)	0 to 15A unspecified 15 to 3000A: ±(1% of Reading + 1A)
Resolution	0.1Aac	0.5Aac
Sample Rate	64 samples/cycle	
Storage Rate	Programmable from 125ms to 1 per day	
Storage Modes	Start/Stop, FIFO, Extended Recording Mode (XRM™), Store on Alarm	
Recording Length	15 minutes to 8 weeks, programmable using DataView®	
Memory	1,000,000 measurements (2MB) The recorded data is stored in non-volatile memory and will be retained even if the battery is low or removed.	
Communication	Bluetooth connection (communicates up to 30 ft)	
Power Source	4 x 1.5V C-cell Alkaline batteries (included)	
Battery Life	Up to 180 days (dependent on storage rate/recording length)	
MECHANICAL		
Dimensions	5.904 x 5.904 x 3.568" (150 x 150 x 91mm) w/o Sensor	
Max Conductor Size	Ø 8" (203mm)	
Weight (with battery)	3.9 lbs (1.77kg)	
Case	UL94-V0	
Vibration	IEC 68-2-6 (1.5mm, 10 to 55Hz)	
Shock	IEC 68-2-27 (30G)	
Drop	IEC 68-2-32 (1m)	

PRODUCT INCLUDES



Bluetooth USB adapter, twelve color-coded input ID markers, mounting hardware, 4 x 1.5V C-Cell Alkaline batteries, and USB drive supplied with DataView® software and user manual.

CATALOG NO. DESCRIPTION

2126.14 Simple Logger® II Model AL834 (4-Channel, TRMS, Bluetooth, AmpFlex® 300/3000Aac, DataView® software)

DATA LOGGERS

SIMPLE LOGGER® II TRMS VOLTAGE

600VAC/DC MODEL L261

One channel loggers for voltage measuring, monitoring and troubleshooting



SPECIFICATIONS

MODELS	L261
ELECTRICAL	
Channels	One
Input Connection	Two recessed 4mm safety banana jacks
Measurement Range	0 to 600VAC/DC
Resolution	0.1V
Accuracy (50/60Hz)	0 to 5V: unspecified 5 to 50V: $\pm(0.5\% \text{ of Reading} + 1V)$ 50 to 600V: $\pm(0.5\% \text{ of Reading} + 0.5V)$
Input Impedance	40M Ω
Sample Rate	64 samples/cycle
Storage Rate	Programmable from 8 every second to 1 every day
Storage Modes	Start/Stop, FIFO, Extended Recording Mode (XRM™) and Alarm
Recording Length	15 minutes to 8 weeks, programmable using DataView
Memory	240,000 measurements (512KB) The recorded data is stored in non-volatile memory and will be retained even if the battery is low or removed.
Communication	USB 2.0 optically isolated
Power Source	2 x 1.5V AA-cell Alkaline batteries (included)
Battery Life	100 hours to >45 days (dependent on sample rate and recording length)
MECHANICAL	
Dimensions	4.94 x 2.75 x 1.28" (125 x 70 x 32mm)
Weight (with battery)	6.4oz (181g)
Case	UL94-V0
Vibration	IEC 68-2-6 (1.5mm, 10 to 55Hz)
Shock	IEC 68-2-27 (30G)
Drop	IEC 68-2-32 (1m)



FEATURES

- TRMS voltage recording up to 600VAC/DC
- AC: 64 samples per cycle and DC: 8 samples per sec
- Programmable storage rates from 8 every second to 1 every day
- 4 user selectable storage modes
- Stores up to 240,000 measurements in non-volatile memory
- Powered by standard Alkaline batteries
- Lightweight, compact, fits anywhere
- 5 LED indicators quickly and clearly display logger status
- Includes FREE DataView® software for data retrieval, real-time display, analysis and report generation
- Optically isolated USB 2.0 communication cable included
- EN 61010-1; 300V CAT IV; 600V CAT III

APPLICATIONS

- Surge and Sag recording
- Long term supply monitoring
- Industrial, commercial and residential monitoring
- Monitor voltage harmonics
- Find intermittent voltage problems
- Machine monitoring

PRODUCT INCLUDES

Set of two color-coded 5ft voltage leads, color-coded alligator clips (red/black), USB type A to 5 pin Mini-B, and USB drive supplied with DataView® software and user manual.



CATALOG NO.	DESCRIPTION
2126.05	Simple Logger® II Model L261 (1-Channel, TRMS, 600VAC/DC, DataView® software)



DATA LOGGERS

SIMPLE LOGGER® II TRMS VOLTAGE & CURRENT

MODEL L562

Two input channel logger capable of recording Arms, Vrms and VA



FEATURES

- 2 input channels
- Voltage: 0 to 600Vac TRMS
- Current: compatible with voltage output AC current probes with voltage outputs (see page 33 - sold separately)
- 64 samples per cycle
- Records Arms, Vrms & VA (VA displays in DataView® software)
- 4 user selectable storage modes
- Programmable storage rates from 8 every second to 1 every day
- Stores up to 240,000 measurements in non-volatile memory
- Powered by standard Alkaline batteries
- Lightweight, compact, fits anywhere
- 5 LED indicators quickly and clearly display logger status
- Includes FREE DataView® software for data retrieval, real-time display, analysis and report generation
- Optically isolated USB 2.0 communication cable included
- Complies with EN 61010-1; 300V CAT IV; 600V CAT III (a safety rated current probe is required)

APPLICATIONS

- Single phase power monitoring
- Residential, commercial, industrial, troubleshooting
- Find sags and surges
- Track energy usage
- Start-Stop time stamping



Set of two color-coded 5ft voltage leads, color-coded alligator clips (red/black), USB type A to 5 pin Mini-B, and USB drive supplied with DataView® software and user manual.

SEE PAGE 33 FOR COMPATIBLE CURRENT PROBES (SOLD SEPARATELY)

SPECIFICATIONS

MODEL	L562	
ELECTRICAL		
Channels	Two	
Connection	Current Channel	Voltage Channel
Input Connection	BNC	Two recessed banana jacks
Input Range	0 to 1V _{AC} (for use with current probes with a voltage output)	0 to 600V _{AC}
Resolution	0.1mV	0.1V
Accuracy (50/60Hz)	0 to 10mV unspecified 10 to 50mV: ±(0.5% of Reading + 1mV) 50 to 1000mV: ±(0.5% of Reading + 0.5mV)	0 to 5V unspecified 5 to 50V: ±(0.5% of Reading + 1V) 50 to 600V: ±(0.5% of Reading + 0.5V)
Input Impedance	800kΩ	40MΩ
Maximum Input Voltage	5V _{rms} or ±707V peak	1.2 x 600V
Sample Rate	64 samples/cycle	
Storage Rate	Programmable from 8 every second to 1 every day	
Storage Modes	Start/Stop, FIFO, Extended Recording Mode (XRm™) and Alarm	
Recording Length	15 minutes to 8 weeks, programmable using DataView®	
Memory	240,000 measurement (512KB). The recorded data is stored in non-volatile memory and will be retained even if the battery is low or removed.	
Communication	USB 2.0 optically isolated	
Power Source	2 x 1.5V AA-cell Alkaline batteries (included)	
Battery Life	100 hours to > 45 days (dependent on sample rate and recording length)	
MECHANICAL		
Dimensions	5.38 x 2.75 x 1.28" (136 x 70 x 32mm)	
Max Conductor Size	Current probe dependent	
Weight (with battery)	6.4oz (181g)	
Case	UL94-V0	
Vibration	IEC 68-2-6 (1.5mm, 10 to 55Hz)	
Shock	IEC 68-2-27 (30G)	
Drop	IEC 68-2-32 (1m)	

PRODUCT INCLUDES

CATALOG NO.

DESCRIPTION

2126.35

Simple Logger® II Model L562 (2-Channel, TRMS, Voltage & Current, DataView® software)

DATA LOGGERS

SIMPLE LOGGER® II TRMS VOLTAGE

MINIFLEX® MODELS ML912 & ML914

AC current recording loggers incorporate two selectable measurement ranges



SPECIFICATIONS

MODEL	ML912	ML914
ELECTRICAL		
Channels	Two	Four
Input	Captive MiniFlex® AC Current Flexible Sensors	
Range	1 to 100A _{AC} 5 to 1000A _{AC}	
Accuracy (50/60Hz)	0 to 1A unspecified 1 to 100A: ±(1% of Reading + 0.5A) 0 to 5A unspecified 5 to 1000A: ±(1% of Reading + 1A)	
(100A Range)		
(1000A Range)		
Resolution	0.1A	
Sample Rate	64 samples/cycle	
Storage Rate	Programmable from 8 every second to 1 every day	
Storage Modes	Start/Stop, FIFO, Extended Recording Mode (XRM™) and Alarm	
Recording Length	15 minutes to 8 weeks, programmable using DataView®	200 hours to 180 days, programmable using DataView®
Memory	240,000 measurement (512KB)	1,000,000 measurement (2MB)
	The recorded data is stored in non-volatile memory and will be retained even if the battery is low or removed.	
Communication	USB 2.0 optically isolated	
Power Source	2 x 1.5V AA-cell Alkaline batteries (included)	4 x 1.5V C-cell Alkaline batteries (included)
Battery Life	100 hrs to >45 days (dependent on storage rate/recording length)	Up to 180 days (dependent on storage rate/recording length)
MECHANICAL		
Dimensions	4.95 x 2.75 x 1.28" (136 x 70 x 32mm) w/o Sensor	5.904 x 5.904 x 3.568" (150 x 150 x 91mm) w/o Sensor
Max Conductor Size	Sensor: 6" (152mm)	
Cable Length	6ft (2m)	
Weight (with battery)	8.67oz (245g)	2.4lbs (1.1kg)
Case	UL94-V0	
Vibration	IEC 68-2-6 (1.5mm, 10 to 55Hz)	
Shock	IEC 68-2-27 (30G)	
Drop	IEC 68-2-32 (1m)	



FEATURES

- Includes two or four integral MiniFlex® flexible current probes that will measure from 1A to 1000A TRMS with 0.1A resolution
- Dual range 100/1000A user selectable per channel in software
- 64 samples per cycle
- Programmable storage rates from 8 every second to 1 every day
- 4 user selectable storage modes
- ML912 stores up to 240,000 measurements in non-volatile memory and ML914 stores up to 1,000,000 measurements
- Powered by standard Alkaline batteries
- Lightweight, compact, fits anywhere
- 5 LED indicators quickly and clearly display logger status
- Includes FREE DataView® software for data retrieval, real-time display, analysis and report generation
- Optically isolated USB 2.0 communication cable included
- EN 61010-1; 600V CAT IV, 1000V CAT III

APPLICATIONS

- Single and Split phase load monitoring
- Neutral and ground current monitoring
- Intermittent problem detection
- Harmonic current monitoring using DataView® software
- Machine load monitoring
- Fault current detection
- Load profiling

CATALOG NO.	DESCRIPTION
2126.37	Simple Logger® II Model ML912 (2-Channel, TRMS, Bluetooth, MiniFlex®, 100/1000A _{AC} , DataView® software)
2126.40	Simple Logger® II Model ML914 (4-Channel, TRMS, Bluetooth, MiniFlex®, 100/1000A _{AC} , DataView® software)

PROBE SELECTION CHART FOR MODEL L562

AEMC MODEL NUMBER	AEMC CATALOG NUMBER	PROBE OUTPUT	PROBE RANGE	MAX RANGE FOR SLII	CABLE DIAMETER	BUS BAR SIZE	OUTPUT CONNECTION	NOTES
MN261	2115.82	100mV/A 10mV/A	0.1 to 24A 0.5 to 240A	10A 100A	0.78" (19.8mm)	N/A	Lead w/BNC	—
MF 300-6-2-10	2126.81	100mV/A 10mV/A	30A 300A	10A 100A	1.77" (44.96mm)	2.25 x 0.75" (57.15 x 19.05mm)	Sensor w/BNC	—
1000-24-2-1	2112.98	10mV/A 1mV/A	5 to 100A 5 to 1000A	100A 1000A	8" (203.2mm)	N/A	Sensor w/Banana Plugs	Must use adapter # 2118.46
MN251	2115.77	1mV/A _{AC}	0.5 to 240A	240A	0.78" (19.81mm)	N/A	Lead w/Banana Plug	Must use adapter # 2118.46
MN379T	2153.02	200mV/A 10mV/A	5A 100A	5A 100A	0.78" (19.8mm)	N/A	Lead w/BNC	—
SR661	2113.49	1mV/A 10mV/A 100mV/A	1000A 100A 10A	1000A 100A 10A	2.13" (54.1mm)	N/A	BNC	—
JM861	2110.90	10mV/A 1mV/A 0.1mV/A	1 to 30A 1 to 300A 1 to 3000A	30A 300A 3000A	2.52" (64.01mm)	1.97 x 5.31" (50.03 x 134.87mm)	Lead w/BNC	—

OPTIONAL ACCESSORY



Banana (female) BNC (male) (XM-BB)

Catalog #2118.46

(use with probes that have banana plug outputs to connect to a Model L562)

DATA LOGGERS

TWO-CHANNEL DC VOLTAGE, CURRENT,
PULSE & EVENT

MODEL L452

Bluetooth-enabled logger and
event counter that records DC voltage, DC current,
4 to 20mA or pulse counts

Real-time display!

Powered by batteries or through a USB cable



SPECIFICATIONS

MODEL	L452			
ELECTRICAL				
Channels	Two*			
Input	Six-pin terminal strip			
Measurements	DC Current	DC Voltage	Event	Pulse
Range	4 to 20mA	100mV, 1V, 10V	N/A	N/A
Accuracy (% of Reading)	±(0.25% + 5cts)	±(0.5% + 1ct)	N/A	N/A
Resolution	0.01mA	0.1mV, 1mV, 10mV	N/A	N/A
Input Impedance	100Ω	1MΩ	1MΩ	N/A
Sample Rate	5 samples/s	5 samples/s	16 samples/s	100 samples/s
Sample Period	DC inputs: 200, 400, 600, or 800ms; or from 1 to 60 seconds Pulse detection: 10ms			
Storage Modes	Start/Stop (ends when memory is full or when the recording stop time is reached, whichever comes first)			
Recording Length	10 minutes to 1 year, set via instrument front panel or through DataView®			
Memory	32MB internal Flash memory (up to 1024 logging sessions, 16M samples)			
Communication	Bluetooth 2.1, Class 1 or USB 2.0			
Power Source	External: via USB connector Internal: 2 x AA NIMH rechargeable batteries (charges through USB port)			
Battery Life	Up to 180 days (dependent on storage rate/recording length)			
MECHANICAL				
Dimensions	1.275 x 2.578 x 5.413" (32.4 x 65.5 x 137.5mm)			
Weight (with battery)	6.7oz (190g) with batteries			
Vibration	IEC 68-2-6 (1.5mm, 10 to 55Hz)			
Shock	IEC 68-2-27 (30G)			
ENVIRONMENTAL				
Operating Temperature	32° to 122°F (0° to 50°C)			
Humidity	16 to 85%			
Protection	IP40 (instrument alone); IP20 (instrument with terminal strip)			

*Both channels must have the same input type.

PRODUCT INCLUDES

6ft USB cable, US 120V wall-to-USB
plug, 6-pin screw terminal block, 2 x
AA rechargeable NiMH batteries, quick
start guide, and a USB drive containing
DataView® software and a user manual.



DATA LOGGERS

TWO-CHANNEL DC VOLTAGE, CURRENT, PULSE & EVENT

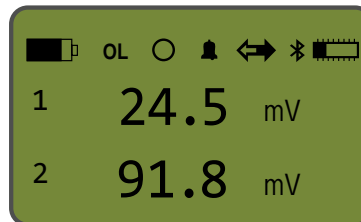
Front Panel & Functional Displays



FEATURES

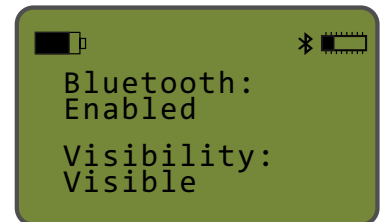
- Multiple data input types. The L452 can log DC voltage, DC current, 4 to 20mA pulse counts, or events. Measurements can be performed directly on the instrument, or through a variety of sensors. This data is stored in the instrument's large 32MB internal Flash memory.
- Expanded user interface. You can set up the instrument and view real-time measurement data through the front panel LCD screen and input buttons. The L452 features an on-board menu-based interface for navigating measurement data and selecting configuration options.
- Enhanced DataView® support. The instrument connects to a PC using either Bluetooth or USB. Once connected, logged data can be downloaded, analyzed, and formatted into reports using DataView's new Data Logger Control Panel. This Control Panel also enables users to change settings on the instrument, view real-time measurements, schedule recording sessions, and perform other configuration tasks.

INSTRUMENT CONFIGURATION



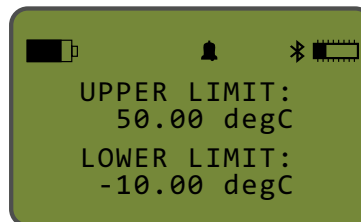
Instrument configuration parameters can be set through the front panel interface.

BLUETOOTH ENABLED/VISIBILITY



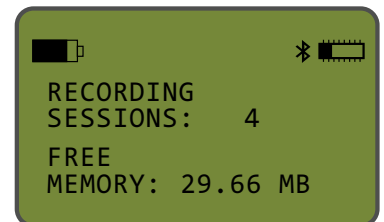
Enable and configure Bluetooth's functionality.

ALARM TRIGGERS



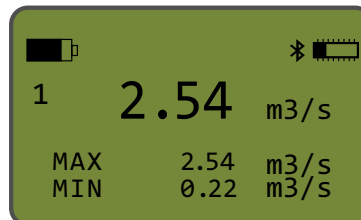
Allows you to set the upper and/or lower alarm trigger limits.

RECORDING SESSION



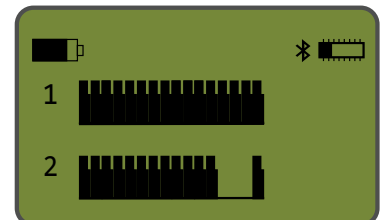
Displays the number of recording sessions currently stored in memory. It also shows the amount of free memory left for storing additional recording sessions.

MIN/MAX MEASUREMENTS



For analog input types, this screen displays the session's MIN/MAX measurement values for each channel.

EVENT MEASUREMENT DATA



For event input, the Channels 1 & 2 measurement graphic data screen appears.

CATALOG NO.	DESCRIPTION
2153.51	Data Logger Model L452 (2-Channel, w/LCD, 100mV/1V/10Vdc, 4 to 20mA _{dc} , Event & Pulse, DataView® software)

DATA LOGGERS

8 TO 16 CHANNEL LOGGER

MODELS DL-1080 & DL-1081

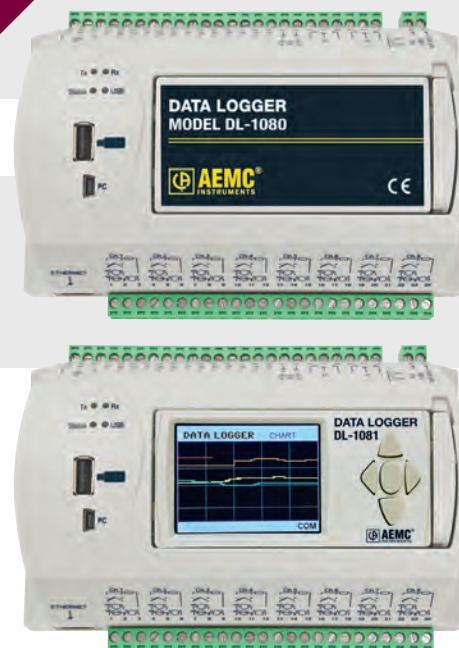
Versatile, powerful and cost effective data loggers handling analog, digital and other types of variables with high resolution and speed

SPECIFICATIONS

MODELS	DL-1080 & DL-1081	
ELECTRICAL		
Input Type	Measuring Range:	Accuracy:
J	-184° to 1832°F (-120° to 1000°C)	±0.2% (F.R.) ±1°C
K	-202° to 2501.6°F (-130° to 1372°C)	
T	-202° to 752°F (-130° to 400°C)	
E	-202° to 1436°F (-130° to 780°C)	
N	-202° to 2372°F (-130° to 1300°C)	
R	68° to 3214.4°F (20° to 1768°C)	±0.2% (F.R.) ±3°C
S	68° to 3214.4°F (20° to 1768°C)	
B	212° to 3308°F (100° to 1820°C)	
Pt100	-328° to 1562°F (-200° to 850°C)	±0.15% (F.R.)
Pt1000	-328° to 1562°F (-200° to 850°C)	
Linear 0 to 20mA	User Programmable	±0.15% (F.R.)*
Linear 4 to 20mA		
Linear 0 to 20mV		
Linear 0 to 50mV		
Linear 0 to 60mV		
Linear -20 to 20mV		
Linear 0 to 5V		
Linear 0 to 10V		
Digital Inputs	Logic level "0": from 0 to 0.8Vdc Logic level "1": from 3 to 30Vdc	
Internal Memory	2MB	
Excitation Current	Pt100s: 360µA; ; Pt1000s: 320µA	
Maximum Pt100/Pt1000 Compensated Cable Resistance	40Ω	
Maximum Input Voltage	30Vdc	
Input Current @ 30Vdc (typical)	3mA	
Digital Outputs	Maximum output voltage: 30Vdc Maximum output current: 200mA Maximum relay current: 3A @ 250VAc; 3A @ 30Vdc	
Storage Rate	from 1ms to 24 hours	
Maximum Channel Logged	100	
Supported Modbus Commands	Read Coil Status (01h) Read Holding Registers (03h) Write Single Coil (05h) Write Single Register (06h) Write Multiple Registers (0Fh)	
Power Supply	100 to 240Vac, 50/60Hz. 20VA (max)	
ENVIRONMENTAL		
Operating Temperature	32° to 122°F (0° to 50°C)	
Relative Humidity	80% up to 85°F (30°C) For temperatures higher than 85°F (30°C), decrease 3% per °C	
Altitude	< 6500ft (2000m)	
Protection	IP20	

F.R. = Full Range

*The full scale refers to the input of the sensor signal and not the range of configured indication.



INPUTS RATED CAT II



FEATURES

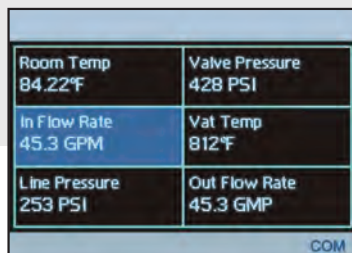
- 8 universal analog input channels
- 8 digital I/Os (individually configured as inputs or outputs)
- 2 relay outputs (NO, NC and common)
- RS485 interface (Modbus master or slave)
- 24Vdc output to power up to eight 4 to 20mA transmitters
- Ethernet interface for LAN and internet use
- USB-device interface for configuring, monitoring and download
- USB-host interface for logged data retrieval through a USB flash drive
- Up to 32 configurable alarms
- Up to 128 virtual channels
- Detachable display (optional)
- Up to 100 channels can be logged at a configurable rate
- Includes FREE software for data retrieval, real-time display, analysis and report generation
- 4 input channel types: analog, digital, remoted and virtual
- Up to 16GB SD card interface

DATA LOGGERS

8 TO 16 CHANNEL LOGGER

MODEL DL-1081 Color Functional Displays

"FAVORITES" SCREEN



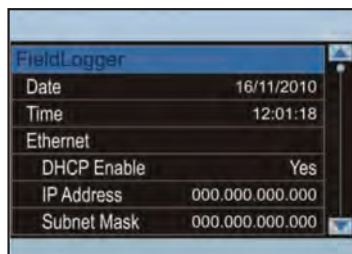
Shows a six-position grid where you can assign a channel to be displayed real-time in each position.

"CHART" SCREEN



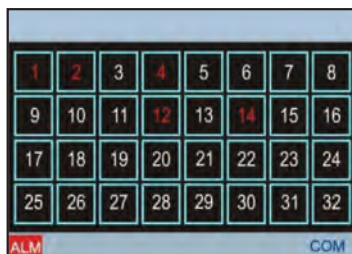
Displays a plot of the favorite channels values.

"CONFIGURATION" SCREEN



Data logger and display parameters can be changed and viewed on this screen.

"ALARMS" SCREEN



A 32-position grid where each numbered position is related to its equivalent alarm or event. When an alarm is active, its number will be displayed in red on this screen.

SOFTWARE SCREENS



PRODUCT INCLUDES

DL-1080 & DL-1081 SOFTWARE

USB drive supplied with software, drivers and user manual

CATALOG NO.	DESCRIPTION
2134.61	Data Logger Model DL-1080 (8 Analog to 8 Digital Channel, no LCD)
2134.62	Data Logger Model DL-1081 (8 Analog to 8 Digital Channel, LCD)

DATA LOGGERS

SIMPLE LOGGER® DATA LOGGERS

MODELS SL01 TO SL13

These small AC and DC simple loggers can be ready to go in minutes with just a few parameters to set up



Model SL01



Model SL10



Model SL11



Model SL12



Model SL13

SPECIFICATIONS

MODELS	SL01	SL10	SL11	SL12	SL13
VOLTAGE					
Range	0 to 5 V _{AC}	±100 mV _{DC}	±1 V _{DC}	±10 V _{DC}	±50 V _{DC}
Resolution	10 mV	0.1 mV	1 mV	10 mV	50 mV
Accuracy	±(0.5% of reading + 50 mV)*	±(0.5% of reading + 0.5 mV)*	±(0.5% of reading + 5 mV)*	±(0.5% of reading + 50 mV)*	±(0.5% of reading + 250 mV)*
Maximum Input Voltage	60 V _{DC}				
Input Impedance	800 KΩ				
Power Source	Internal: Two 1.5 V AA non-rechargeable batteries External: USB 2.0 (computer or other USB power source)				
Power Consumption	Internal power: 1 mA (average) External power: 100 mW				



FEATURES

- Simple 1 button operation
- Quick 2 wire input connection
- User configurable scaling, units of measure and recording length
- Stores up to 4 million measurements
- Data analysis software included
- Software provides real-time trend graph display, data download, analysis and report generation
- Micro-B USB cable included

The Simple Logger Control Panel allows you to configure how data measured by these instruments is recorded and displayed. The available settings depend on which model is connected to the computer. The following table shows which configuration options are available for each model.

FEATURE	SL01	SL10	SL11	SL12	SL13	SL20	SL30	SL31	SL40	SL50
Set up recording	✓	✓	✓	✓	✓	✓	✓	✓	✓	✓
Define units	✓	✓	✓	✓	✓	✓	✓	✓	✓	✓
Set instrument clock	✓	✓	✓	✓	✓	✓	✓	✓	✓	✓
Erase instrument memory	✓	✓	✓	✓	✓	✓	✓	✓	✓	✓
Scaling	✓	✓	✓	✓	✓	✓	✓			
Filtering	✓	✓	✓	✓	✓	✓			✓	✓
Thermocouple type										✓
Cold Junction Compensation										✓
Rising/Falling events								✓		

CATALOG NO. DESCRIPTION

2156.01	Simple Logger Model SL01 (Voltage, 5 V _{AC})
2156.10	Simple Logger Model SL10 (Voltage, 100mV _{DC})
2156.11	Simple Logger Model SL11 (Voltage, 1 V _{DC})
2156.12	Simple Logger Model SL12 (Voltage, 10 V _{DC})
2156.13	Simple Logger Model SL13 (Voltage, 50 V _{DC})

DATA LOGGERS

SIMPLE LOGGER® DATA LOGGERS

MODELS SL20 TO SL50

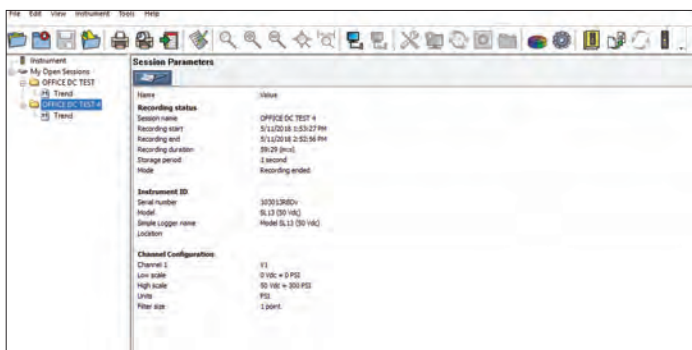
Models available for logging
DC Current, Temperature,
Pulse and Events



SPECIFICATIONS

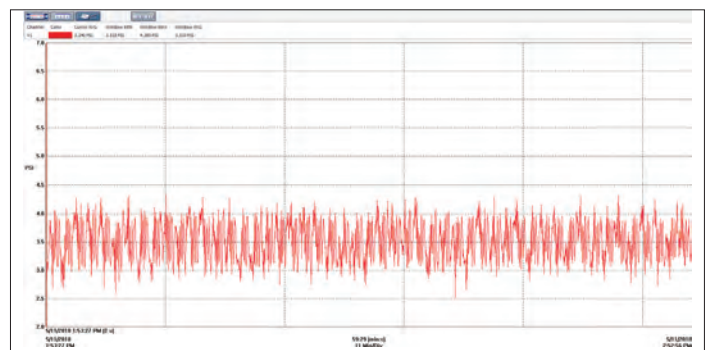
MODELS	SL20	SL30	SL31	SL40	SL50						
					Thermocouple Type:						
					J	K	N	T	E	R	S
	CURRENT	PULSE	EVENT	TEMPERATURE							
Range	±20 mA	Contact closure, 0 to 5 V _{DC}	Contact closure, 0 to 5 V _{DC}	-94 to 1022°F (-70C to +550C)	-346 to 2192°F (-210 to 1200°C)	-328 to 2502°F (-200 to 1372°C)	-328 to 2372°F (-200 to 1300°C)	-328 to 752°F (-200 to 400°C)	-328 to 1832°F (-200 to 1000°C)	32 to 3200°F (0 to 1760°C)	
Resolution	0.02 mA	n/a		0.1°C	0.1°C						
Accuracy	±(0.5% of reading + 0.1 mA)*	n/a	±(1% of reading + 1.8°F [1°C])*	Below -148°F (-100°C): ±(0.4% of reading + 9°F [5°C])*					32 to 212°F (0° to +100°C): ±(0.3% of reading + 18°F [10°C])*		
				-148 to 212°F (-100° to 100°C): ±(0.3% of reading + 7.2°F [4°C])*							
				Above 212°F (100°C): ±(0.2% of reading + 5.4°F [3°C])*					Above 212°F (100°C): ±(0.2% of reading + 14°F [8°C])*		
Maximum Input Voltage	3 V _{DC}	10 V _{DC}		n/a	1 V						
Input Impedance	49 Ω	800 KΩ		n/a	800 KΩ						
Power Source	Internal: Two 1.5 V AA non-rechargeable batteries External: USB 2.0 (computer or other power source, when powered by the USB the battery is automatically disconnected)										
Power Consumption	Internal power: 1 mA (average) External power: 100 mW										

SESSION PARAMETER



Shows the current configuration of the logger.

REAL-TIME TREND GRAPH



Typical real-time trend graph.

CATALOG NO.	DESCRIPTION
2156.20	Simple Logger Model SL20 (Current, 4 to 20 mADC)
2156.30	Simple Logger Model SL30 (Pulse)
2156.31	Simple Logger Model SL31 (Event)
2156.40	Simple Logger Model SL40 (Temperature, RTD/PT1000)
2156.50	Simple Logger Model SL50 (Temperature, Thermocouple)



USE DATAVIEW® TO CONFIGURE ALL USER SELECTABLE FUNCTIONS ON
MODELS CL601, AL834, L261, L562, ML912, ML914, L452

TYPICAL DATAVIEW® FUNCTIONAL DISPLAYS



Quick and simple configuration of all functions and settings from one dialog box.



CONFIGURE ALL DATA LOGGER FUNCTIONS

- Display and analyze real-time data on your PC
- Configure all data logger functions and parameters from your PC including sample rate, recording length, channel configuration and more
- Create and store a complete library of configurations that can be uploaded to the logger as needed
- Zoom in and out and pan through sections of the graph to analyze the data
- Download, display and analyze recorded data
- Display waveforms, trend graphs, harmonics (AC models) and text summaries
- Create custom views and reports
- Print reports using standard or custom templates you design
- Free upgrade available from the help menu

