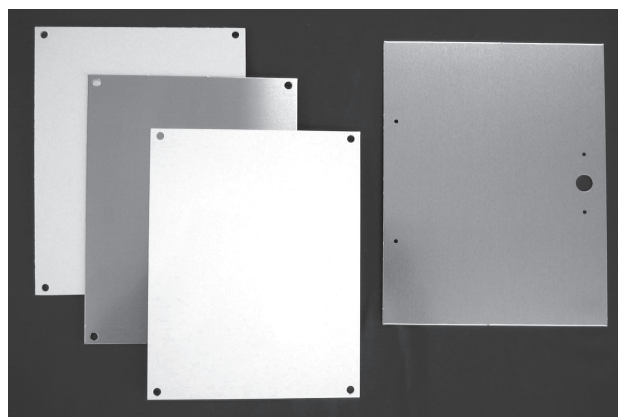
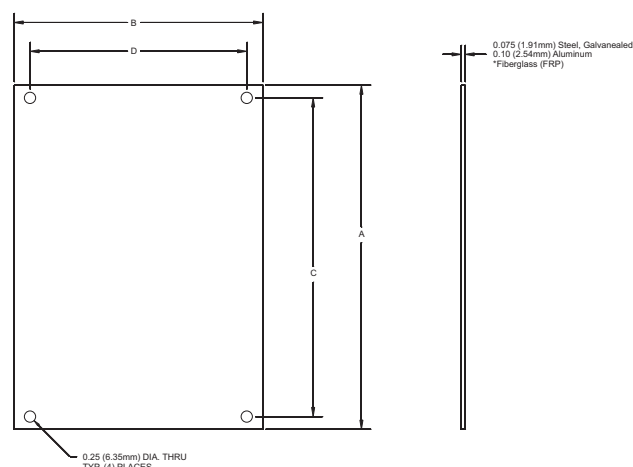


AM / AMU / AM-R / Control Series: Optional "P" Painted Carbon Steel, "PA" Aluminum Back Panels "PF" Fiberglass Back Panels "PG" Galvannealed Back Panels



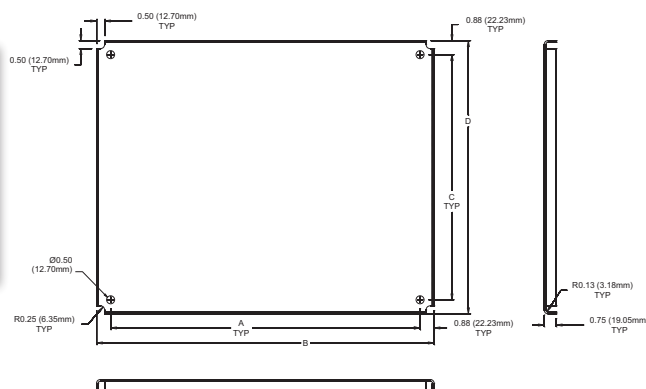
AM, AMU, AM-R SERIES

Steel	Alum	FRP	Galv	A	B	C	D
P66	PA66	PF66	PG66	4.81 122mm	4.81 122mm	4.25 108mm	4.25 108mm
P86	PA86	PF86	PG86	6.75 171mm	4.88 124mm	6.25 159mm	4.25 108mm
P108	PA108	PF108	PG108	8.75 222mm	6.88 175mm	8.25 210mm	6.25 159mm
P120	PA120	PF120	PG120	10.75 273mm	8.88 226mm	10.25 260mm	8.25 210mm
P142	PA142	PF142	PG142	12.75 324mm	10.88 276mm	12.25 311mm	10.25 260mm
P164	PA164	PF164	PG164	14.75 375mm	12.88 327mm	14.25 362mm	12.25 311mm
P186	PA186	PF186	PG186	16.88 429mm	14.88 378mm	16.25 413mm	14.25 362mm
P206	PA206	PF206	PG206	18.44 468mm	14.44 367mm	17.81 452mm	13.81 351mm



CONTROL SERIES

Steel	Alum	FRP	Galv	A	B	C	D
P2420	PA2420	PF2420	PG2420	19.25 489mm	21.00 533mm	15.25 387mm	17.00 432mm
P2424	PA2424	PF2424	PG2424	19.25 489mm	21.00 533mm	19.25 489mm	21.00 533mm
P3024	PA3024	PF3024	PG3024	25.25 641mm	27.00 686mm	19.25 489mm	21.00 533mm



Note: Fiberglass is just a flat panel, no rolled edge.

*FRP Thickness (.125) PF66, PF86, PF108; (.187) PF120, PF142, PF164; (.250) PF186, PF206, PF2420, PF2424, PF3024

AM-R Series: (Used with raised cover only) Aluminum Hinged Front Panels (HFP)

Features:

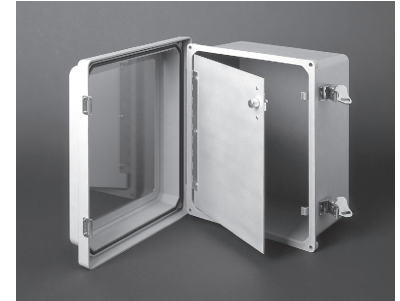
- Panels designed to offer both a professional instrumentation display and a protective covering for electric wiring inside the enclosure
- Completely field-installable panel design with no required enclosure modifications
- Latch design secures panel in place with one-quarter turn
- One-half-inch adjustability up or down
- For use with raised cover enclosures from 6" x 6" through 30" x 24"
- Panel modifications available include: cut-in holes, and screen printing
- Compliant with RoHS directive

AM-R JIC SERIES:

Part No.	Panel Dimension
HFP66	5.60 x 5.60 x .09 142mm x 142mm x 2mm
HFP86	7.50 x 5.62 x .09 191mm x 143mm x 2mm
HFP108	7.50 x 9.50 x .09 191mm x 241mm x 2mm
HFP120	9.50 x 11.50 x .09 241mm x 292mm x 2mm
HFP142	11.50 x 13.50 x .09 292mm x 343mm x 2mm
HFP164	13.00 x 15.13 x .09 330mm x 384mm x 2mm
HFP186	15.38 x 17.25 x .09 391mm x 438mm x 2mm
HFP206	14.94 x 18.88 x .09 379mm x 480mm x 2mm

AM-R CONTROL SERIES:

Part No.	Panel Dimension
HFP2420	19.38 x 23.25 x .09 492mm x 591mm x 2mm
HFP2424	23.38 x 23.25 x .09 594mm x 591mm x 2mm
HFP3024	23.38 x 29.25 x .09 594mm x 743mm x 2mm



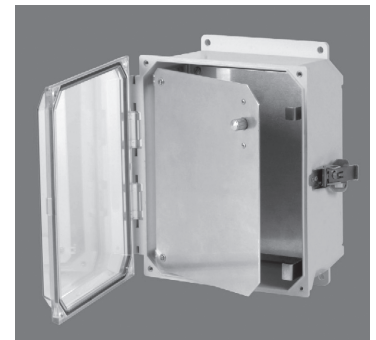
AMU Series: Aluminum Hinged Front Panels (HFPU)

Features:

- Panels designed to offer both a professional instrumentation display and a protective covering for electric wiring inside the enclosure
- Completely field-installable panel design. Installation instruction sheet included.
- Latch design secures panel in place with one-quarter turn
- For use with enclosures from 6" x 6" through 20" x 16"
- Panel modifications available include: cut-in holes, and screen printing
- Compliant with RoHS directive

AMU JIC SERIES:

Part No.	Panel Dimension
HFPU66	5.87 x 5.64 x .09 149mm x 143mm x 2mm
HFPU86	7.73 x 5.91 x .09 196mm x 150mm x 2mm
HFPU108	7.87 x 9.64 x .09 200mm x 245mm x 2mm
HFPU120	9.86 x 11.64 x .09 250mm x 296mm x 2mm
HFPU142	11.86 x 13.64 x .09 301mm x 346mm x 2mm
HFPU164	13.86 x 15.64 x .09 352mm x 397mm x 2mm
HFPU186	15.99 x 17.90 x .09 406mm x 455mm x 2mm
HFPU206	15.55 x 19.65 x .09 395mm x 499mm x 2mm



PANELS



Enclosure Accessories

ENCLOSURE PRINT POCKET

PART NO.: AMPRINTPOCKET

- Easy to install in the field
- Store prints or other important documents inside the enclosure
- Grey polystyrene print pocket for large JIC Series, Control Series, and Empire Series enclosures
- Two-sided adhesive tape pre-applied to print pocket
- Size: 9.375 in (H) x 10.375 in (W) x 1.045 in (D)
238 mm (H) x 264 mm (W) x 27 mm (D)



ENCLOSURE VENTILATION KIT

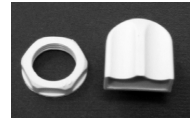
PART NO.: AMVENTSM & AMVENTLG

- Grey polyamide material
- Use with JIC Series enclosures - Install two per enclosure
- Installation instruction sheet included
- Seal included in kit to ensure raintight enclosure protection
- Two vents per kit for field installation allows for sufficient air circulation and prevents condensation and moisture

Overall Dimensions:

AMVENTSM; 1 in (25 mm) x 1.125 in (29 mm) and requires .75 in (19mm) through hole

AMVENTLG; 2 in (51 mm) x 2.675 in (68 mm) and requires 1.156 in (29 mm) through hole



EXHAUST FILTER KIT

PART NO.: AMPFA1000, AMPFA2000, and AMPFA3000

- Three sizes covering large JIC Series, Control Series, and Empire Series enclosures
- Non-metallic made from strong ABS-FR, self-extinguishing material (UL 94 VO)
- Snap-in design allows for hardware-free installation
- Gaskets included provide a NEMA 12 seal against the enclosure
- Filter cover comes standard in light grey RAL 7035 color
- Installation instruction sheet included
- Replaceable filter material provides for 73% filtration efficiency
- Filter density is standard 150 (g/m2)
- See back page for more ordering information



Enclosure Accessories

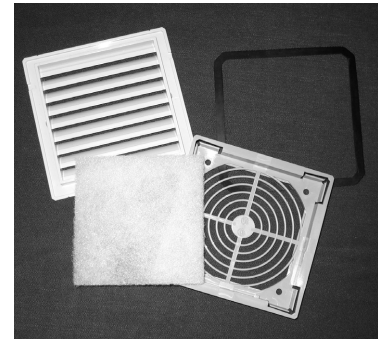
EXHAUST FILTER KIT CONT.

PART NO.: **AMPFA1000, AMPFA2000, and AMPFA3000**

Size Information:

- AMPFA1000; 4.133in (105mm) x 4.133in (105mm) x 0.39in (10mm)
- AMPFA2000; 5.905in (150mm) x 5.905in (150mm) x 1.06in (27mm)
- AMPFA3000; 9.842in (250mm) x 9.842in (250mm) x 1.18in (30mm)

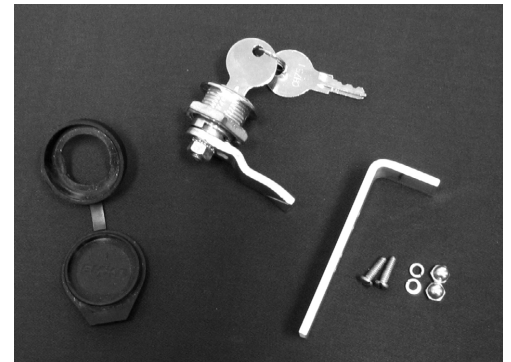
Note: There are other thermal management accessories available upon request. These include: Fans, replacement filters, heaters, air-conditioners, and thermostats. Please contact factory for more information.



ENCLOSURE KEYLOCK KITS

PART NO.: **AMKEYLOCKFC, AMKEYLOCKRC, and AMKEYLOCKRCHFP**

- AMKEYLOCKFC keylock assembly kit for (F)lat (C)over enclosures 6x6 through 20x16 (AM Series)
- AMKEYLOCKRC keylock assembly kit for (R)aised (C)over enclosures 6x6 through 30x24 (AM-R Series)
- AMKEYLOCKRCHFP keylock assembly kit for (R)aised (C)over enclosures with a (H)inge (F)ront (P)anel installed in enclosures 10x8 through 30x24 (AM-R Series)
- Kits include: Two keys, keylock assembly, cam, dust cover, lock bracket, and hardware
- Field installable while requiring only a round hole to be cut into the cover
- Keylocks are sold with a self locking nut for tight and secure assembly
- Just a 1/4 turn rotation is required to lock the enclosure cover
- Installed keylock assemblies have been tested and pass the NEMA 4X watertight test
- Manufactured components are RoHS compliant (Restriction of Hazardous Substances)



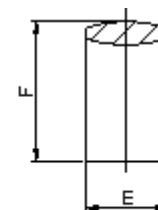
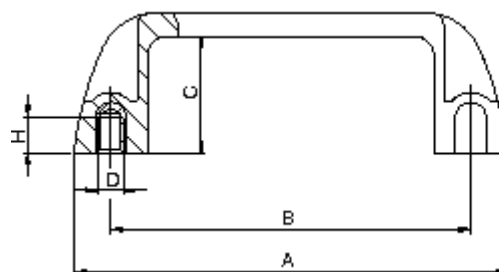
PULL TYPE HANDLE

PART NO.: **AMHDL001**

- Handle: Glass fiber reinforced nylon
- Finish: Black matte
- Screws and lock washers included

Dimensions

- A: 5.47 in (139 mm)
- B: 4.61 in (117 mm)
- C: 1.34 in (34 mm)
- D: 1/4 - 20
- E: 1.02 in (26 mm)
- F: 1.61 in (41 mm)
- H: .35 in (9 mm)



Enclosure Accessories

POLE MOUNT KITS

MATERIALS OF CONSTRUCTION

Pole Mount Flange

- Galvannealed steel; 14 guage (.075 in.)

Pole Mount Band Clamp

- 300 series stainless steel (48 in.)

Flange Fasteners (screw, washer, and lock nut)

- 300 series stainless steel (#10-32)



ENCLOSURES USED WITH

Part Number	AM Series Units		AMU Series Units
	Long Side Hinged	Short Side Hinged	Flange Mount Units
AMPOLEMNT6	AM664, AM864	None	AMU664, AMU864
AMPOLEMNT8	AM1084, AM1086	AM864	AMU1084
AMPOLEMNT10	AM1206	AM1084, AM1086	AMU1206
AMPOLEMNT12	AM1426	AM1206	AMU1426
AMPOLEMNT14	AM1648	AM1426	AMU1648
AMPOLEMNT16	AM1868, AM2068	AM1648	AMU1860, AMU2060
AMPOLEMNT20	AM2420	None	None
AMPOLEMNT24	AM2424, AM3024	AM2420	None

FEATURES & BENEFITS

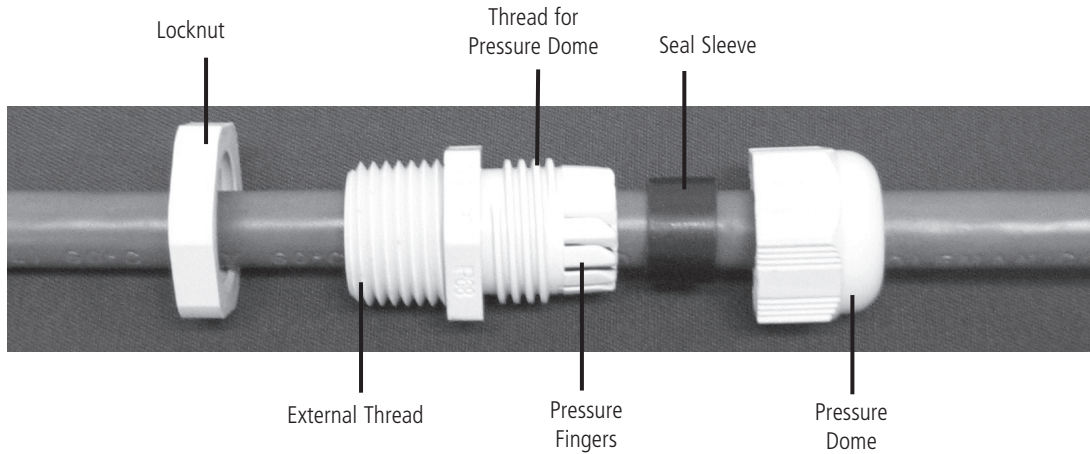
- Eight sizes covering AM JIC, AMU JIC, and Control Series enclosures
- Steel band design allows for adjustable mounting capability on pole sizes up through 15 inches in diameter
- Allied pole mount kits have the capability to mount enclosures to round, square, and rectangular pole shapes.
- Fewer parts are used so minimal assembly is required for installation
- Pole mount kits offer corrosion protection for outdoor use



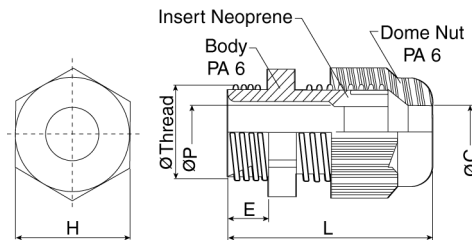
Enclosure Accessories

CORD GRIPS

- Body: Polyamide 6
- Seal: Neoprene
- Lock Nut: 25% glass fiber reinforced Polyamide 6
- Color: Light Grey
- Maximum strain relief through clamping range
- IP 68 achieved without seal rings
- Trapezoidal thread with high torque guarantees tight and permanent fit of the dome nut
- Gas and water-tight
- CSA approved and UL listed
- Temp range: PA 6 -40 to 100 deg C (-40 to 212 deg F)
Neoprene -25 to 100 deg C (-13 to 212 deg F)
- Recommended enclosure hole size for external thread:
NPT 1/2" 21.8mm (.8594 in); **NPT 3/4"** 27.4mm (1.0781 in);
NPT 1" 34.1mm (1.3438 in)



CORD GRIP DIMENSIONS



Thread Size	Part Number	Clamping Range (mm)	Package Quantity	H (mm)	E (mm)	L (mm)	Dia C (mm)	Dia P (mm)	Dia NPT/M (mm)
NPT 1/2"	5308901	5 to 12	50	24	14	44	12.5	12.5	21.2
NPT 3/4"	5308902	9 to 18	20	33	15	54	18.5	18.5	26.7
NPT 1"	5308903	14 to 25	20	42	18	60	25.5	25.5	33.3

LOCK NUT DIMENSIONS

Thread Size	Part Number	Package Quantity	Thickness E (mm)	SW (mm)
NPT 1/2"	7211486-50	50	6	27
NPT 3/4"	7211487	20	7	36
NPT 1"	7211488	20	7	41

