

E-Trip Characteristic



UL508 Listed
E137938

Application Examples:

High efficiency motors, which have exceedingly high inrush currents. Relatively short thermal trip delays and very high magnetic trip points.



One Pole

Standard Pack: 12

Weight:

0.3A - 32A

1.75kg (3.86 lb.)

40A - 63A

2.07kg (4.56 lb.)

Rated Current	Type/ Cat. No.	Approvals
0.3A	1E03UM	UL SFA
0.5A	1E05UM	UL SFA
0.75A	1E075UM	UL SFA
0.8A	NA	
1.0A	1E1UM	UL SFA
1.6A	1E1.6UM	UL SFA
2.0A	1E2UM	UL SFA
2.5A	1E2.5UM	UL SFA
3.0A	1E3UM	UL SFA
3.5A	1E3.5UM	UL SFA
4.0A	1E4UM	UL SFA
5.0A	1E5UM	UL SFA
6.0A	1E6UM	UL SFA
8.0A	1E8UM	UL SFA
10A	1E10UM	UL SFA
12A	1E12UM	UL SFA
13A	1E13UM	UL SFA
15A	1E15UM	UL SFA
16A	1E16UM	UL SFA
20A	1E20UM	UL SFA
25A	1E25UM	UL SFA
30A	1E30UM	UL SFA
32A	1E32UM	UL SFA
40A	1E40UM	UL SFA
50A	1E50UM	UL SFA
60A	1E60UM	UL SFA
63A	1E63UM	UL SFA



Three Pole

Standard Pack: 4

Weight:

0.3A - 32A

1.75kg (3.86 lb.)

40A - 63A

2.07kg (4.56 lb.)

Rated Current	Type/ Cat. No.	Approvals
0.3A	3E03UM	UL SFA
0.5A	3E05UM	UL SFA
0.75A	3E075UM	UL SFA
0.8A	NA	
1.0A	3E1UM	UL SFA
1.6A	3E1.6UM	UL SFA
2.0A	3E2UM	UL SFA
2.5A	3E2.5UM	UL SFA
3.0A	3E3UM	UL SFA
3.5A	3E3.5UM	UL SFA
4.0A	3E4UM	UL SFA
5.0A	3E5UM	UL SFA
6.0A	3E6UM	UL SFA
8.0A	3E8UM	UL SFA
10A	3E10UM	UL SFA
12A	3E12UM	UL SFA
13A	3E13UM	UL SFA
15A	3E15UM	UL SFA
16A	3E16UM	UL SFA
20A	3E20UM	UL SFA
25A	3E25UM	UL SFA
30A	3E30UM	UL SFA
32A	3E32UM	UL SFA
40A	3E40UM	UL SFA
50A	3E50UM	UL SFA
60A	3E60UM	UL SFA
63A	3E63UM	UL SFA



Two Pole

Standard Pack: 6

Weight:

0.3A - 32A

1.75kg (3.86 lb.)

40A - 63A

2.07kg (4.56 lb.)

Rated Current	Type/ Cat. No.	Approvals
0.3A	2E03UM	UL SFA
0.5A	2E05UM	UL SFA
0.75A	2E075UM	UL SFA
0.8A	NA	
1.0A	2E1UM	UL SFA
1.6A	2E1.6UM	UL SFA
2.0A	2E2UM	UL SFA
2.5A	2E2.5UM	UL SFA
3.0A	2E3UM	UL SFA
3.5A	2E3.5UM	UL SFA
4.0A	2E4UM	UL SFA
5.0A	2E5UM	UL SFA
6.0A	2E6UM	UL SFA
8.0A	2E8UM	UL SFA
10A	2E10UM	UL SFA
12A	2E12UM	UL SFA
13A	2E13UM	UL SFA
15A	2E15UM	UL SFA
16A	2E16UM	UL SFA
20A	2E20UM	UL SFA
25A	2E25UM	UL SFA
30A	2E30UM	UL SFA
32A	2E32UM	UL SFA
40A	2E40UM	UL SFA
50A	2E50UM	UL SFA
60A	2E60UM	UL SFA
63A	2E63UM	UL SFA



Add-on Neutral Pole

Rating	Type/ Cat. No.	Approvals
0.3-63A/ 480Y/277V	N63UM	UL SFA

Standard Pack: 5

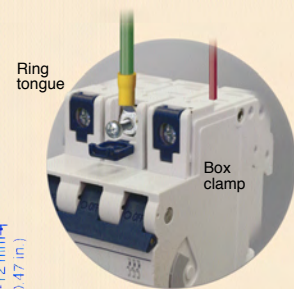
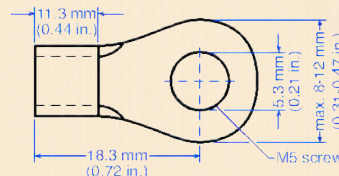
Weight:

0.775kg (1.71lb.)

Standard Dual Connection Terminal

- Box clamp terminals
Top: 18-3 AWG;
Bottom: 18-2 AWG
(Line/Load reversible)
- Ring tongue terminals

Dimensions*:



* May differ by manufacturer.
Top terminal ring tongue maximum thickness 1.6 mm.