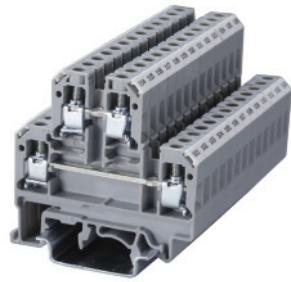


Altech double level terminals are the answer to high wiring density problems posed by certain unavoidable wiring arrangements. Double level terminals have the following advantages:

- Double wiring density available without extension of mounting rails.
- Interconnection/shorting can be done at both levels.
- Marking/identification by marking tags possible at both levels.

CDL4UN(I.S) internally shorted double level terminals are useful for distribution applications by using shorting links at lower levels.

Now uses larger MT6 tag for easier visibility.



Feed-Through Double Level

	CDL4UN	CDL4UN(I.S)
Terminal Width	6 mm	6 mm
Height x Length	54 x 55.5 mm	54 x 55.5 mm
Stripping Length	9 mm	9 mm
Insulation Material	Polyamide 6.6	Polyamide 6.6
Type of Connection	4 screw clamps & 2 tapped holes for cross connection	4 screw clamps & 1 tapped hole for cross connection
Approvals		
Wire Range	22-10 AWG	22-10 AWG
Voltage Rating	600V	600 V
Current Rating	35 A	35 A
Torque	7 lb-in	7 lb-in
Other Approvals		
Terminal Block	CDL4UN	CDL4UN(I.S)
End Plate	EPCDL4UN	EPCDL4UN
Separator Plate	SPCDL4U	SPCDL4U
DIN Rail for ordering information refer to pages 90-91		
End Stop for ordering information refer to page 92	CA702 CA802	CA702 CA802
Internal Jumper	2 pole CA722/2 3 pole CA722/3 4 pole CA722/4 10 pole CA722/10	2 pole CA722/2 3 pole CA722/3 4 pole CA722/4 10 pole CA722/10
Insulated Internal Jumper	2 pole CA742/2 3 pole CA742/3 4 pole CA742/4 10 pole CA742/10	2 pole CA742/2 3 pole CA742/3 4 pole CA742/4 10 pole CA742/10
Current Bars	2 pole CA703/1 3 pole CA704/1 4 pole CA705/1 10 pole CA732/10 10 pole (breakable) CA732/10-A 10 pole CA732/100	2 pole CA703/1 3 pole CA704/1 4 pole CA705/1 10 pole CA732/10 10 pole CA732/10-A 10 pole CA732/100
Shorting Sleeve & Screw	CA707/S/Q/01	CA607/S/Q
External Jumper	2 pole CA714/2 3 pole CA714/3 4 pole CA714/4 10 pole CA714/10	2 pole CA714/2 3 pole CA714/3 4 pole CA714/4 10 pole CA714/10
Marking Tags	MT6	MT6

COLOR BLOCKS		
(other than standard grey)		
When ordering please add color suffix to Cat. No.		
<i>Example for color Red: Cat.No./R</i>		
Color	Ordering Suffix	
Red	R	
Yellow	Y	
Blue	BU	
Green	G	
<i>Consult Altech for availability:</i>		
Orange	O	
Beige	BG	
Dark Brown	DB	
Black	BL	
White	W	