

# SPEED-LOCK™ Steel Box Connectors and SPEED-LOCK™ Zinc Snap Connectors

Type AMC

COMMERCIAL AND INDUSTRIAL FITTINGS: ARMORED CABLE, METAL CLAD, FLEXIBLE METAL CONDUIT AND NONMETALLIC CONNECTORS

NEC/CEC:  
Listed for Ordinary Locations

## Applications

- To ground and secure MC, AC and flexible metal conduit to boxes and enclosures.
- For steel box installations.

## Features



- No locknut required.
- Single-unit or duplex construction with captive clamp.
- Connects over 100 sizes of MC, AC or flexible metal conduit with just four fittings.
- Easy to install. Just tilt, insert and snap down.
- Single-unit construction eliminates loose component parts.
- Integral red plastic insulated throat bushing provides maximum protection for wire insulation.

## Standard Material/Finish

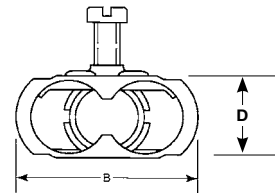
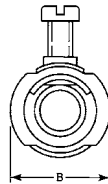
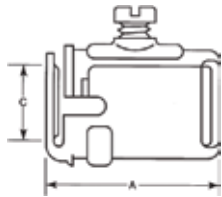
- Steel/zinc electroplated

## NEC/CEC Certifications and Compliances

- UL Standard: 514B
- UL Listed: E-11852
- CSA Standard: C22.2 No. 18.3
- CSA Certified: 028507

	Trade Size (Inches)	Dimensions in Millimeters (Inches)				Weight per 100 kg (lb)	Catalog Number
		A	B	C	D		
	1/2 Single	35.1 (1.38)	25.4 (1.00)	10.4 (0.41)	17.5 (0.69)	2.95 (6.50)	AMC-50
AMC-50	3/4 Single	41.4 (1.63)	33.3 (1.31)	14.2 (0.56)	24.9 (0.98)	3.40 (7.50)	AMC-75
	1/2 Knockout; 3/4 capacity	41.4 (1.63)	33.3 (1.31)	14.2 (0.56)	24.9 (0.98)	3.40 (7.50)	AMC-5075
AMC-52	1/2 Duplex	39.6 (1.56)	43.7 (1.72)	14.2 (0.56)	17.5 (0.69)	5.44 (12.00)	AMC-52

## Illustrated Dimensions



# SPEED-LOCK™ Steel Box Connectors and SPEED-LOCK™ Zinc Snap Connectors

Type AMC

NEC/CEC:  
Listed for Ordinary Locations

Cable Type	AMC-50 1/2" Knockout	AMC-5075 1/2" Knockout 3/4" Capacity	AMC-75 3/4" Knockout	AMC-52 ① 1/2" Knockout Duplex
AC Steel and HCF AC Steel	(0.475 to 0.565 Dia.) 14/2, 14/3, 14/4, 12/2, 12/3, 12/4, 10/2, 10/3	(0.605 to 0.853 Dia.) 10/4, 10/5, 8/3, 8/4, 6/3	(0.545 to 0.850 Dia.) 10/3, 10/4, 10/5, 8/3, 8/4, 6/3	(0.475 to 0.565 Dia.) 14/2, 14/3, 14/4, 12/2, 12/3, 12/4, 10/2, 10/3
AC Aluminum and HCF AC Aluminum	(0.464 to 0.610 Dia.) 14/2, 14/3, 14/4, 12/2, 12/3, 12/4, 10/2, 10/3	(0.610 to 0.823 Dia.) 10/3, 10/4, 10/5 8/3, 8/4, 6/3	(0.600 to 0.835 Dia.) 10/3, 10/4, 10/5 8/3, 8/4, 6/3	(0.464 to 0.600 Dia.) 14/2, 14/3, 14/4, 12/2, 12/3, 12/4
MCI Steel	(0.455 to 0.565 Dia.) 14/2, 14/3, 14/4, 12/2, 12/3, 12/4, 10/2, 10/3	(0.580 to 0.690 Dia.) 10/3, 10/4, 10/5, 8/3	(0.550 to 0.850 Dia.) 10/3, 10/4, 10/5 8/3, 8/4, 6/3	(0.455 to 0.545 Dia.) 14/2, 14/3, 14/4, 12/2, 12/3, 12/4
MCI Aluminum	(0.455 to 0.600 Dia.) 14/2, 14/3, 14/4, 12/2, 12/3, 12/4, 10/2, 10/3	(0.520 to 0.690 Dia.) 10/3, 10/4, 10/5, 8/3	(0.580 to 0.850 Dia.) 10/3, 10/4, 10/5 8/3, 8/4, 6/3	(0.455 to 0.550 Dia.) 14/2, 14/3, 14/4, 12/2, 12/3, 12/4
MCI-A and HCF MCI-A Aluminum	(0.385 to 0.510 Dia.) 14/2, 14/3, 14/4, 12/2, 12/3, 12/4, 10/2, 10/3	(0.675 Dia.) 8/3	(0.675 to 0.785 Dia.) 8/3, 8/4, 6/3	(0.385 to 0.520 Dia.) 14/2, 14/3, 14/4, 12/2, 12/3, 12/4, 10/2, 10/3
Steel Flex	3/8"	1/2"	1/2"	3/8"
Aluminum Flex	3/8"	1/2"	1/2"	3/8"
Reduced Wall Steel Flex	3/8"	1/2"	1/2"	3/8"
Reduced Wall Aluminum Flex	3/8"	1/2"	1/2"	3/8"
Extra Reduced Wall Steel Flex	3/8"	1/2"	1/2"	3/8"
Extra Reduced Wall Aluminum Flex	3/8"	1/2"	1/2"	3/8"

① Accepts two cables of each size listed. Requires armored cable bushing when used with flexible metal conduit.  
Note: All dimensions are "over-armor" dimensions.

COMMERCIAL AND INDUSTRIAL FITTINGS: ARMORED CABLE, METAL CLAD, FLEXIBLE METAL CONDUIT AND NONMETALLIC CONNECTORS

 Apleton®  
OZGEDNEY

# SPEED-LOCK™ Steel Box Connectors and SPEED-LOCK™ Zinc Snap Connectors

COMMERCIAL AND INDUSTRIAL FITTINGS: ARMORED CABLE, METAL CLAD, FLEXIBLE METAL CONDUIT AND NONMETALLIC CONNECTORS

NEC/CEC:  
Listed for Ordinary Locations

## Applications

- To ground and secure steel or aluminum AC, MC, MCI, MCI-A, HFC-MCI, FMC and RWFMC flexible metal conduit to boxes and enclosures in dry locations.
- For 1/2" knockout.

## Features

- Patented design installs in seconds without the use of tools or locknut.
- Significantly reduces labor.
- Single, duplex or 90 degree construction.
- Design eliminates loose component parts.
- Superior pullout protection.
- Easily removable for reuse.
- Integral red plastic insulated throat +105 °C (+221 °F) rated provides maximum protection for wire insulation.
- Concrete tight when tapped.



## Standard Material/Finish

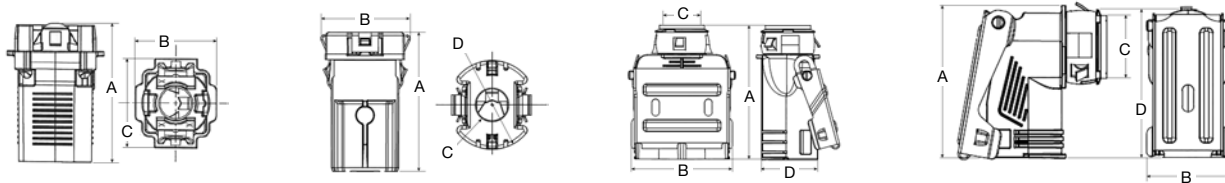
- Body – Zinc diecast
- Cover – Steel/Zinc electroplated
- Insulator – Non-Metallic

## NEC/CEC Certifications and Compliances

- UL Standard: 514B
- CSA Standard: C22.2 No. 18
- cULus Listed: E-11853

Trade Size (Inches)	OB/SB KO Size (Inches)	Connector Type	Cable Type			Cable Size	Cable Diameter Millimeters (Inches)	Weight per 100 kg (lb)	Catalog Number
			AC/MC	Aluminium MCI-A	Steel MCI-A				
3/8	1/2	Straight	X	X	X	3/8" 14/2 to 10/3	10.03 - 16.21 (0.395 - 0.638)	2.72 (6.0)	<b>38SLC</b>
3/8	1/2	Straight	X	X	X	3/8" 14/2 to 10/3	10.03 - 16.21 (0.395 - 0.638)	2.72 (6.0)	<b>38SLCBULK</b>
3/8	1/2	Cut-In (Old Work)	X	X	X	3/8" 14/2 to 10/3	10.03 - 16.21 (0.395 - 0.638)	2.72 (6.0)	<b>38SLC0W</b>
3/8	1/2	Duplex	X	X	—	3/8" 14/2 to 10/3	11.68 -15.49 (0.460 - 0.610)	4.99 (11.0)	<b>3838SLC</b>
3/8	1/2	Duplex	X	X	—	3/8" 14/2 to 10/3	11.68 -15.49 (0.460 - 0.610)	4.99 (11.0)	<b>3838SLCBULK</b>
3/8	1/2	90°	X	—	—	3/8" 14/2 to 10/3	11.68 -15.49 (0.460 - 0.610)	3.40 (7.5)	<b>3890SLC</b>
1/2	1/2	90°	X	—	—	1/2" 8/2 to 8/3	17.02 -19.94 (0.670 - 0.785)	4.99 (11.0)	<b>5090SLC</b>

## Dimensions in Millimeters (Inches)



Catalog Number	A	B	C	D
38SLC	23.8 (0.94)	20.8 (0.82)	37.3 (1.47)	—
38SLC0W	39.0 (1.54)	24.9 (0.98)	9.35 (0.37)	28.0 (1.10)
3838SLC	53.3 (2.10)	40.1 (1.58)	15.0 (0.59)	22.3 (0.88)
3890SLC	49.0 (1.93)	31.4 (1.24)	15.0 (0.59)	52.2 (2.06)
5090SLC	39.0 (1.54)	24.9 (0.98)	9.35 (0.37)	28.0 (1.10)