

# AE Series 100 Amp Pin and Sleeve Receptacles Connectors and Plugs

## Weatherproof

600 Vac, 250 Vdc. Pressure Wire Terminals. Wire Size Range: #3—#1

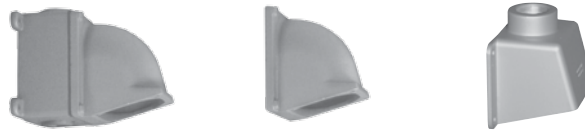
NEC:

Rated for Ordinary (Unclassified) Locations



Grounding Style	Wire/Pole	Spring Door Receptacle Only	Screw Cap Receptacle Only	Connector Body Only	Clamping Ring Plug	Plug Cable Dia. (Inches)
Style 1 (Shell Only)	2W, 2P	AE1021	AE1027	APR10253	AEP10253	.875, 1.437 to 1.750
	3W, 3P	AE1031	AE1037	APR10353	AEP10353	.875, 1.437 to 1.750
	4W, 4P	AE1041	AE1047	APR10453	AEP10453	.875, 1.437 to 1.750
Style 2 (Shell and Extra Pole)	2W, 3P	AE1032	AE1038	APR10363	AEP10363	.875, 1.437 to 1.750
	3W, 4P	AE1042	AE1048	APR10463	AEP10463	.875, 1.437 to 1.750

### AE Series Mounting Boxes



Hub Size (Inches)	AJA ①	AJA Adapter	AEE
1	AJA310	AJA100	AEE36
1-1/4	AJA410	AJA100	AEE46
1-1/2	AJA510	AJA100	AEE56
2	AJA610	AJA100	—

### 100 Amp Interiors ②



Grounding Style	Wire/Pole	Interiors Style 1		Interiors Style 2	
		Receptacle	Plug	Receptacle	Plug
Style 1 (Shell Only)	2W, 2P	AEI-1021	AEPI-1021	—	—
	3W, 3P	AEI-1031	AEPI-1031	—	—
	4W, 4P	AEI-1041	AEPI-1041	—	—
Style 2 (Shell and Extra Pole)	2W, 3P	—	—	AEI-1032	AEPI-1032
	3W, 4P	—	—	AEI-1042	AEPI-1042

① AJA Feed Thru box furnished with one close-up plug in bottom recessed hub.

② Pins and sleeves are not sold separately. Must purchase as a replacement interior.