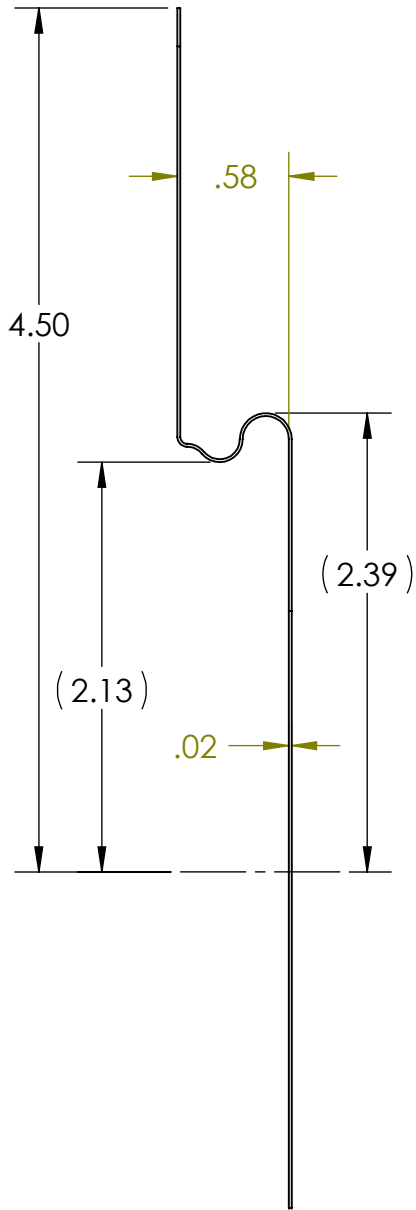
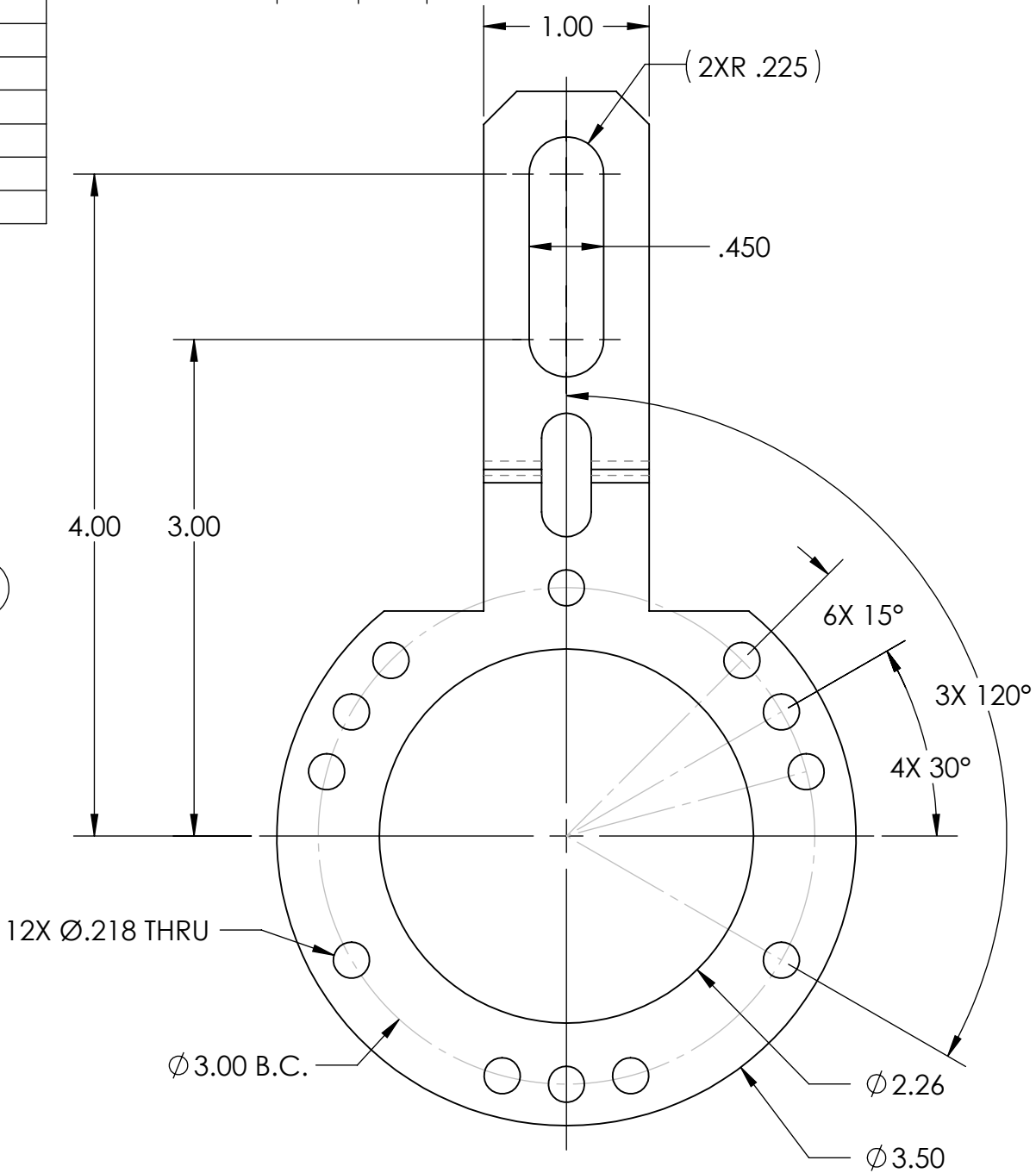
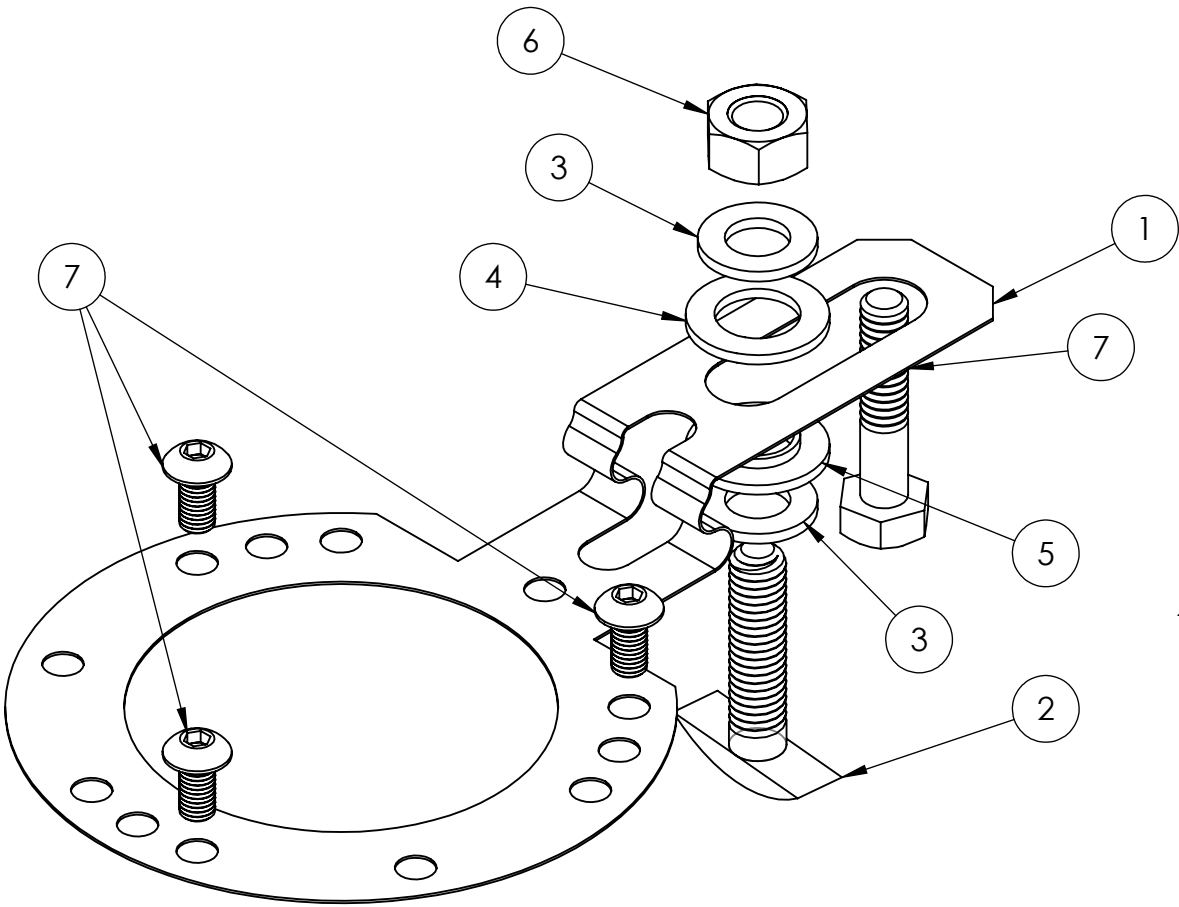


4		3	
ITEM NO.	PART NO.	DESCRIPTION	QTY.
1	38334-007	TETHER ARM	1
2	33029-002	ZINC PLATED T-BOLT	1
3	MS15795-813	5/16 FLAT WASHER	2
4	25031-001	NYLON FLAT-WASHER	1
5	25030-006	NYLON SHOULDER WASHER	1
6	MS35690-510	5/16-18UNC HEX NUT	1
7	330BX-10323/8L	HEX SOCKET HEAD SCREW	3
8	330HHCS5/1611/4	HEX HEAD CAP SCREW	1



ORDER P/N 31215-004

NOTE: THE TETHER ARM, NYLON WASHERS, FLAT WASHERS AND THREE #10-32 SCREWS WILL BE USED IN ALL INSTALLATIONS. EITHER THE T-BOLT OR THE HEX HEAD BOLT WILL BE USED WITH OR WITHOUT THE HEX NUT DEPENDING UPON THE INSTALLATION REQUIREMENTS.

UNCONTROLLED COPY			
FIRST ISSUE DATE: 04/19/19	SENSATA TECHNOLOGIES PROPRIETARY AND CONFIDENTIAL. NEITHER THIS PRINT NOR THE INFORMATION CONTAINED HEREON IS TO BE USED AGAINST THE INTERESTS OF SENSATA TECHNOLOGIES OR AGAINST THE INTERESTS OF ANY OF ITS AFFILIATED COMPANIES OR WHOLLY OWNED SUBSIDIARIES.		
DRAWN: DRC	INTERPRET DIMENSIONING AND TOLERANCING PER ASME Y14.5-2009. UNLESS OTHERWISE SPECIFIED DIMENSIONS ARE IN INCHES[MILLIMETERS] AND ARE INTENDED AS NOMINAL SEE PRODUCT SPECIFICATIONS FOR MORE DETAILS.		
APPROVED: MFB			
DATE: 04/19/19	DO NOT SCALE DRAWING		
ECN:			
DATE:	THIRD ANGLE PROJECTION		
MATERIAL: CRES STEEL; NYLON (INSULATOR WASHERS); HALF HARD 300 SERIES STAINLESS STEEL (TETHER ARM)			
BEI SENSORS 1461 LAWRENCE DRIVE THOUSAND OAKS, CA 93120		TITLE HS35 R2 TETHER ARM KIT	
SIZE B	DWG NO. 09916-001	REV. .	
SCALE 1:2	SOLIDWORKS	SHEET 1 OF 1	

DEVICE: PROJECT: