

## Basic features

|                               |  |
|-------------------------------|--|
| <b>Approval/Conformity</b>    | CE<br>UKCA<br>cULus<br>WEEE  |
| <b>Scope of delivery</b>      | Part label (20x)<br>Port cover M12 (4x)<br>Grounding strap<br>Lock washer<br>Short guide<br>M4x6 screw |
| <b>Supported web browsers</b> | Google Chrome<br>Mozilla Firefox<br>Microsoft Edge   |

## Display/Operation

|  |            |
|--|------------|
| <b>Actuator supply UA, indicator</b>   | Green LED  |
| <b>IO-Link communication indicator</b> | Green LED  |
| <b>Sensor supply US indicator</b>      | Green LED  |
| <b>Switching function display</b>      | LED yellow |

## Electrical connection

|  |                                 |
|--|---------------------------------|
| <b>Connection (COM 1)</b>              | M12x1-Female, 4-pin, D-coded    |
| <b>Connection (COM 2)</b>              | M12x1-Female, 4-pin, D-coded    |
| <b>Connection (supply voltage IN)</b>  | M12x1-Male, 5-pin, L-coded      |
| <b>Connection (supply voltage OUT)</b> | M12x1-Female, 5-pin, L-coded    |
| <b>Connection slots</b>                | 8x M12x1-Female, 5-pin, A-coded |
| <b>Contact, surface protection</b>     | NiAu                            |

## Electrical data

|                                      |  |
|--------------------------------------|--|
| <b>Address range</b>                 | IPV4                                       |
| <b>Configurable inputs/outputs</b>   | yes  |
| <b>Current sum UA, actuator</b>      | 16 A                                       |
| <b>Current sum US, sensor</b>        | 16 A                                       |
| <b>IO-Link function</b>              | Master                                     |
| <b>Operating voltage Ub</b>          | 18...30.2 VDC                              |
| <b>Output current max.</b>           | 4 A short-circuit proof and overload-proof |
| <b>Output current max., note</b>     | short-circuit proof and overload-proof     |
| <b>Rated operating voltage Ue DC</b> | 24 V                                       |
| <b>Transfer rate</b>                 | 10/100 Mbit/s                              |

Network Blocks  
**BNI PNT-508-105-Z067**  
**Order Code: BNI00EN**



**Environmental conditions**

|                                 |   |
|---------------------------------|---|
| Ambient temperature             | -5...70 °C  |
| Ambient temperature UL max.     | 45 °C   |
| EN 60068-2-27, Continuous shock | 100 g, 2 ms   |
| EN 60068-2-27, Shock            | 100 g, 6 ms   |
| EN 60068-2-6, Vibration         | 5...61 Hz, constant amplitude 1 mm<br>61...500 Hz, constant acceleration 15 g |
| IP rating                       | IP67, when threaded in  |
| Storage temperature             | -25...70 °C   |

**Functional safety**

|              |      |
|--------------|------|
| MTTF (40 °C) | 60 a |
|--------------|------|

**Interface**

|                      |                 |
|----------------------|-----------------|
| Auxiliary interfaces | 8x IO-Link      |
| Conformity class     | B               |
| Digital inputs       | 16x PNP, Type 3 |
| Digital outputs      | 16x PNP         |
| Fast Start-Up (FSU)  | yes             |
| IO-Link version      | 1.1             |
| Interface            | Profinet I/O    |
| Interface IIoT       | REST API        |
| Netload class        | III             |
| Port-class           | Type A          |

**Material**

|                    |                      |
|--------------------|----------------------|
| Gasket, material   | FKM 75               |
| Housing material   | Zinc, Die casting    |
| Housing shield     | yes                  |
| Surface protection | Cu 15 µm<br>Ni 15 µm |

**Mechanical data**

|                       |                    |
|-----------------------|--------------------|
| Dimension             | 68 x 31.7 x 224 mm |
| Mounting ground strap | M4                 |
| Mounting part         | 2-hole screw mount |

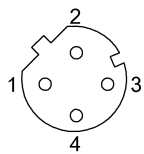
**Remarks**

See short guide

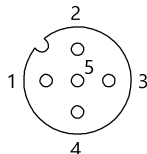
For more information about MTTF and B10d see MTTF / B10d Certificate

Indication of the MTTF- / B10d value does not represent a binding composition and/or life expectancy assurance; these are simply experiential values with no warranty implications. These declared values also do not extend the expiration period for defect claims or affect it in any way.

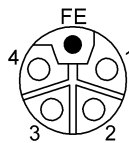
**Connector Drawings**



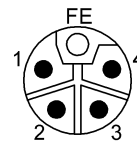
Profinet Port  
 PIN 1: TD+  
 PIN 2: RD+  
 PIN 3: TD-  
 PIN 4: RD-



IO-Link  
 PIN 1: US  
 PIN 2: In-/Output  
 PIN 3: GND  
 PIN 4: IO-Link/In-/Output  
 PIN 5: n.c.

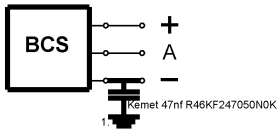


PIN 1: US  
 PIN 2: GND UA  
 PIN 3: GND US  
 PIN 4: UA  
 PIN 5: FE



PIN 1: US  
 PIN 2: GND UA  
 PIN 3: GND US  
 PIN 4: UA  
 PIN 5: FE

## Installation remarks



1) Machine GND