

MOTOR STARTER PROTECTORS

RMSP SERIES — EFFICIENT FUNCTIONALITY AND COMPACT DESIGN



Snap together with an RC contactor to make a complete electro-mechanical combination starter



RMSP Series motor starter protector highlights:

RMSP Series manual starters meet or exceed all universal standards and offer efficient motor starting functionality in a compact design. Protection functions include protection of group installation, protection of circuits, motor protection, starter protection and phase failure protection. RMSP starters provide a wide range of ambient temperature compensation. They couple directly to RC Series contactors for a complete electro-mechanical combination starter.

KEY ADVANTAGES:

- 45mm width up to 32 amps
- 55mm width up to 63 amps
- 70mm width up to 100 amps
- Three position operator (ON-OFF-TRIP) (on 100AF only)
- Complete range of accessories
- Handle locks in the off position
- Class 10 overload trip characteristics
- Trip test
- Finger-safe terminals
- DIN rail and screw mounting

STANDARD FEATURES:

- Front-mounted auxiliary contact
- Easy mounting onto DIN rail
- Large scale for current setting
- Auxiliaries snap on without tools
- Dial cover lock device
- Test trip device for checks of the trip mechanism
- Finger-safe terminals
- Dial cover
- Handle lock device (off positions)
- Three position operator handle (ON-OFF-TRIP) (on 100AF only)
- Identification labels
- High interrupt capability

Guaranteed ... for two full years.

Only Benschaw has a two year guarantee.

Every Benschaw modular overload relay is guaranteed for two full years. Other manufacturers limit their warranties to just one year. But at Benschaw, we believe that, because we build them better, we can guarantee them longer.



RMSP MANUAL STARTER SPECIFICATIONS



Specification	RMSP-32H	RMSP-63H	RMSP-100H
Frame	32AF	63AF	100AF
Rated Operational Voltage (Ue)	Up to 690 V	Up to 690 V	Up to 690 V
Rated Frequency	50/60 Hz	50/60 Hz	50/60 Hz
Rated Insulation Voltage (Ui)	690 V	1,000 V	1,000 V
Rated Impulse Voltage (Uimp)	6 kV	8 kV	8 kV
Utilization Category	IEC 60 947-2 (Breaker) IEC 60 947-4 (Starter)	Cat. A AC3	Cat. A AC3
Shock Resistance (IEC 68 Part 2-27)	25 g	25 g	25 g
Degree Of Protection (IEC 60 529)	IP20	IP20	IP20
Instantaneous Short Circuit Release	13 x Ie max.	13 x Ie max.	13 x Ie max.
Mechanical Endurance (Operating)	100,000	50,000	50,000
Electrical Indurance (Cycles)	100,000	25,000	25,000
Max. Operating Frequency Per Hour	25	25	25
Temperature Compensation (Operation) (°C)	-20 ~ +60	20 ~ +60	-20 ~ +60
Phase Failure Function	Yes	Yes	Yes
Trip Indicating Function	Yes	Yes	Yes
Test Function	Yes	Yes	Yes

RMSP SERIES UL/CSA PERFORMANCE DATA

MOTOR PROTECTION FOR GROUP INSTALLATION

RMSP-32H

Rated Operational Current I _e [A]		0.16	0.25	0.4	0.63	1	1.6	2.5	4	6	8	10	13	17	22	26	32
Max. Short-Circuit Current	240 V [KA]	100	100	100	100	100	100	100	100	100	100	100	100	100	100	100	100
	480Y/277 V [KA]	65	65	65	65	65	65	65	65	65	65	65	65	30	30	30	30
	600Y/347 V [KA]	25	25	25	25	25	25	25	25	25	25	25	25	10	10	10	10
Motor Load (1 Phase)	115 V [HP]	—	—	—	—	—	—	—	1/8	1/4	1/3	1/2	1/2	1	2	2	2
	230 V [HP]	—	—	—	—	—	1/10	1/6	1/3	3/4	1	1 1/2	2	3	3	5	5
Motor Load (3 Phase)	230 V [HP]	—	—	—	—	—	1/3	1/2	1	1 1/2	2	3	3	5	7 1/2	7 1/2	10
	480 V [HP]	—	—	—	—	1/2	3/4	1 1/2	2	5	5	7 1/2	7 1/2	10	15	15	20
	575 V [HP]	—	—	—	—	1/2	1	1 1/2	3	5	5	10	10	15	20	20	30
Max. Rated Current of Breaker [A]		15	15	15	15	15	15	15	15	20	30	40	50	60	80	100	125



RMSP-63H

Rated Operational Current I _e [A]		10	13	17	22	26	32	40	50	63
Max. Short-Circuit Current	240 V [KA]	100	100	100	100	100	100	100	100	100
	480Y/277 V [KA]	65	65	50	50	50	50	50	50	50
	600Y/347 V [KA]	25	25	10	10	10	10	10	10	10
Motor Load (1 Phase)	115 V [HP]	1/2	1/2	1	2	2	3	3	5	5
	230 V [HP]	1 1/2	2	3	3	5	5	7 1/2	10	15
Motor Load (3 Phase)	230 V [HP]	3	3	5	7 1/2	10	10	15	15	20
	480 V [HP]	7 1/2	7 1/2	10	15	20	25	30	40	50
	575 V [HP]	10	10	15	20	25	30	40	50	60
Max. Rated Current of Fuse/Breaker [A]		600	600	600	600	600	600	600	600	600



RMSP-100H

Rated Operational Current I _e [A]		17	22	26	32	40	50	63	75	90	100
Max. Short-Circuit Current	240 V [KA]	100	100	100	100	100	100	100	100	100	100
	480Y/277 V [KA]	65	65	65	65	65	65	50	50	50	50
	600Y/347 V [KA]	25	25	25	20	20	20	10	10	10	10
Motor Load	115 V [HP]	1	1 1/2	2	3	3	5	5	7 1/2	10	10
	230 V [HP]	3	3	5	5	7 1/2	10	15	15	20	20
Motor Load	230 V [HP]	5	7 1/2	10	10	15	15	20	25	30	40
	480 V [HP]	10	15	20	25	30	40	50	60	75	75
	575 V [HP]	15	20	25	30	40	50	60	75	100	100
Max. Rated Current of Fuse/Breaker [A]		1000	1000	1000	1000	1000	1000	1000	1000	1000	1000

Manual motor controller "group installation" or "Type E starter" (UL 508, CSA C22.2 No. 14, for group installation, in connection with a short-circuit protection device.

RMSP SERIES UL/CSA PERFORMANCE DATA

MOTOR PROTECTION

Rated Operational Current I _e [A]	Thermal Release Adjustment Range [A]	Magnetic Release Operating Current [A]	Switching of 3-Phase AC Motors, AC-2, AC-3					
			3-Phase [kW] (50/60 Hz)			3-Phase HP (60 Hz)		
			230 V	400 V	690 V	230 V	480 V	575 V
RMSP-32H								
0.16	0.1...0.16	2.1	-	0.02	—	—	—	—
0.25	0.16...0.25	3.3	0.03	0.06	—	—	—	—
0.4	0.25...0.4	5.2	0.06	0.09	—	—	—	—
0.63	0.4...0.63	8.2	0.09	0.12	0.25	—	—	—
1	0.63...1.0	13	0.12	0.25	0.55	—	½	½
1.6	1.0...1.6	20.8	0.25	0.55	1.1	⅓	¾	1
2.5	1.6...2.5	32.5	0.37	0.75	1.5	½	1½	1½
4	2.5...4.0	52	0.75	1.5	3	1	2	3
6	4...6	78	1.5	2.2	4	1½	5	5
8	5...8	104	1.5	3	5.5	2	5	5
10	6...10	130	3	4	7.5	3	7½	10
13	9...13	169	3	5.5	11	3	7½	10
17	11...17	221	4	7.5	11	5	10	15
22	14...22	286	4	7.5	15	7½	15	20
26	18...26	338	5.5	11	18.5	7½	15	20
32	22...32	416	7.5	15	22	10	20	30
RMSP-63H								
10	6~10	130	3	4	7.5	3	7½	10
13	9~13	169	3	5.5	11	3	7½	10
17	11~17	221	4	7.5	11	5	10	15
22	14~22	286	4	7.5	15	7½	15	20
26	18~26	338	5.5	11	18.5	10	20	25
32	22~32	416	7.5	15	22	10	25	30
40	28~40	520	7.5	18.5	30	15	30	40
50	34~50	650	11	22	45	15	40	50
63	45~63	819	15	30	55	20	50	60
RMSP-100H								
17	11~17	221	4	7.5	11	5	10	15
22	14~22	286	4	7.5	15	7½	15	20
26	18~26	338	5.5	11	18.5	10	20	25
32	22~32	416	7.5	15	22	10	25	30
40	28~40	520	7.5	18.5	30	15	30	40
50	34~50	650	11	22	45	15	40	50
63	45~63	819	15	30	55	20	50	60
75	55~75	975	22	37	63	25	60	75
90	70~90	1170	30	45	75	30	75	100
100	80~100	1300	30	45	90	40	75	100



MOTOR STARTER PROTECTORS

RMSP SERIES

32 AMP FRAME CLASS 10

Model Number	Rated Operational Current (A)	Thermal Release Adj. Range (A)	Disconnect Type	Weight	Dimensions (in.)			List Price
					H	W	D	
☒ RMSP-32HA16	0.16	0.1–0.16	Rotary	0.36 kg/1 lb.	3.7	1.7	3.9	\$90
☒ RMSP-32HA25	0.25	0.16–0.25	Rotary	0.36 kg/1 lb.	3.7	1.7	3.9	\$90
☒ RMSP-32HA4	0.4	0.25–0.4	Rotary	0.36 kg/1 lb.	3.7	1.7	3.9	\$90
☒ RMSP-32HA63	0.63	0.4–0.63	Rotary	0.36 kg/1 lb.	3.7	1.7	3.9	\$90
☒ RMSP-32H1A	1	0.63–0.1	Rotary	0.36 kg/1 lb.	3.7	1.7	3.9	\$90
☒ RMSP-32H1A6	1.6	1–1.6	Rotary	0.36 kg/1 lb.	3.7	1.7	3.9	\$97
☒ RMSP-32H2A5	2.5	1.6–2.5	Rotary	0.36 kg/1 lb.	3.7	1.7	3.9	\$97
☒ RMSP-32H4A	4	2.5–4	Rotary	0.36 kg/1 lb.	3.7	1.7	3.9	\$105
☒ RMSP-32H6A	6	4–6	Rotary	0.36 kg/1 lb.	3.7	1.7	3.9	\$105
☒ RMSP-32H8A	8	5–8	Rotary	0.36 kg/1 lb.	3.7	1.7	3.9	\$105
☒ RMSP-32H10A	10	6–10	Rotary	0.36 kg/1 lb.	3.7	1.7	3.9	\$105
☒ RMSP-32H13A	13	9–13	Rotary	0.36 kg/1 lb.	3.7	1.7	3.9	\$105
☒ RMSP-32H17A	17	11–17	Rotary	0.36 kg/1 lb.	3.7	1.7	3.9	\$105
☒ RMSP-32H22A	22	14–22	Rotary	0.36 kg/1 lb.	3.7	1.7	3.9	\$105
☒ RMSP-32H26A	26	18–26	Rotary	0.36 kg/1 lb.	3.7	1.7	3.9	\$105
☒ RMSP-32H32A	32	22–32	Rotary	0.36 kg/1 lb.	3.7	1.7	3.9	\$105

63 AMP FRAME CLASS 10

Model Number	Rated perational Current (A)	Thermal Release Adj. Range (A)	Disconnect Type	Weight	Dimensions (in.)			List Price
					H	W	D	
☒ RMSP-63H10A	10	6–10	Rotary	1 kg/2.2 lbs.	5.5	2.2	5.7	\$349
☒ RMSP-63H13A	13	9–13	Rotary	1 kg/2.2 lbs.	5.5	2.2	5.7	\$349
☒ RMSP-63H17A	17	11–17	Rotary	1 kg/2.2 lbs.	5.5	2.2	5.7	\$349
☒ RMSP-63H22A	22	14–22	Rotary	1 kg/2.2 lbs.	5.5	2.2	5.7	\$349
☒ RMSP-63H26A	26	18–26	Rotary	1 kg/2.2 lbs.	5.5	2.2	5.7	\$349
☒ RMSP-63H32A	32	22–32	Rotary	1 kg/2.2 lbs.	5.5	2.2	5.7	\$349
☒ RMSP-63H40A	40	28–40	Rotary	1 kg/2.2 lbs.	5.5	2.2	5.7	\$349
☒ RMSP-63H50A	50	34–50	Rotary	1 kg/2.2 lbs.	5.5	2.2	5.7	\$349
☒ RMSP-63H63A	63	45–63	Rotary	1 kg/2.2 lbs.	5.5	2.2	5.7	\$349

☒ Web stocked

MOTOR STARTER PROTECTORS

RMSP SERIES



100 AMP FRAME CLASS 10

Model Number	Rated Operational Current (A)	Thermal Release Adj. Range	Disconnect Type	Weight	Dimensions (in.)			List Price
					H	W	D	
🖱️ RMSP-100H17A	17	11–17	Rotary	2.2 kg/5 lbs.	6.5	2.8	6.7	\$586
🖱️ RMSP-100H22A	22	14–22	Rotary	2.2 kg/5 lbs.	6.5	2.8	6.7	\$586
🖱️ RMSP-100H26A	26	18–26	Rotary	2.2 kg/5 lbs.	6.5	2.8	6.7	\$586
🖱️ RMSP-100H32A	32	22–32	Rotary	2.2 kg/5 lbs.	6.5	2.8	6.7	\$586
🖱️ RMSP-100H40A	40	28–40	Rotary	2.2 kg/5 lbs.	6.5	2.8	6.7	\$586
🖱️ RMSP-100H50A	50	34–50	Rotary	2.2 kg/5 lbs.	6.5	2.8	6.7	\$586
🖱️ RMSP-100H63A	63	45–63	Rotary	2.2 kg/5 lbs.	6.5	2.8	6.7	\$586
🖱️ RMSP-100H75A	75	55–75	Rotary	2.2 kg/5 lbs.	6.5	2.8	6.7	\$586
🖱️ RMSP-100H90A	90	70–90	Rotary	2.2 kg/5 lbs.	6.5	2.8	6.7	\$586
🖱️ RMSP-100H100A	100	80–100	Rotary	2.2 kg/5 lbs.	6.5	2.8	6.7	\$586

🖱️ Web stocked

MOTOR STARTER PROTECTOR ACCESSORIES

RMSP SERIES

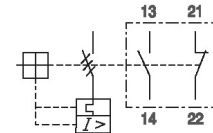
RMSP-FX11



AUXILIARY SWITCH

- Front mounting
- 2-pole
- One front-mounting module per RMSP

1NO1NC



Connection Diagram

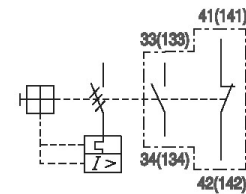
RMSP-LX11



AUXILIARY SWITCH

- Side mounting on the left
- 2-pole
- One side-mounting module per RMSP

1NO1NC



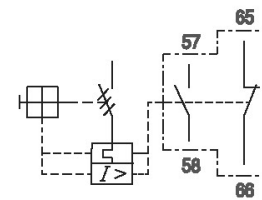
Connection Diagram

RMSP-LA



ANY TRIP ALARM SWITCH

- Side mounting on the left
- 2-pole
- One side-mounting module per RMSP (always directly fitted to the RMSP)



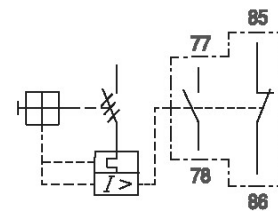
Connection Diagram

RMSP-LAM



MAGNETIC TRIP ALARM SWITCH

- Side mounting on the left
- 2-pole
- One side-mounting module per RMSP (directly fitted to RMSP except when using with any Trip Alarm)



Connection Diagram

MOTOR STARTER PROTECTOR ACCESSORIES



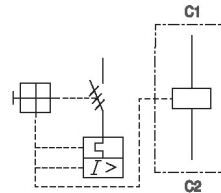
RMSP SERIES

RMSP-RS120



SHUNT RELEASE

- Side mounting on the right
- One side-mounting module per RMSP (always directly fitted to the RMSP)



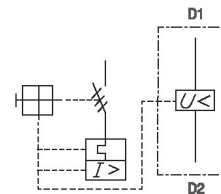
Connection Diagram — 120 V 60 Hz

RMSP-RU120



UNDERVOLTAGE RELEASE

- Side mounting on the right
- 2-pole
- One side-mounting module per RMSP (always directly fitted to the RMSP)



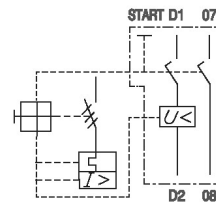
Connection Diagram — 120 V 60 Hz

RMSP-RUX



UNDERVOLTAGE RELEASE WITH SWITCH (ROTARY HANDLE ONLY)

- Side mounting on the right
- Include 2 NO auxiliary contacts
- One side-mounting module per RMSP (always directly fitted to the RMSP)



Connection Diagram — 120 V 60 Hz

MOTOR STARTER PROTECTOR ACCESSORIES

RMSP SERIES

RMSP-PIL32



PUSH-IN LUG

- For screwing the RMSP on to the mounting plates

Applied Types: RMSP-32H

RMSP-IB-100

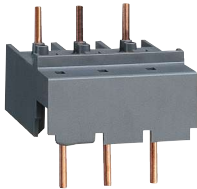


INSULATION BARRIERS

- Insulation barriers with increased creepage distances and clearances for UL

Applied Types: RMSP-100H

RMSP-DA



RMSC CONTACTOR ADAPTER

- For direct connection of RMSP to RC contactor

Applied Types: RC Contactors

Model Number	Description	Configuration	Number of Units Per RMSP	List Price
RMSP-FX11	Front-Mount Auxiliary Contact	1 NO / 1 NC	1	\$30
RMSP-LX11	Side-Mount Auxiliary Contact	1 NO / 1 NC	1	\$42
RMSP-LA	Side-Mount Alarm Switch ¹	1 NO / 1 NC	1	\$42
RMSP-LAM	Side-Mount Alarm Switch ²	1 NO / 1 NC	1	\$42
RMSP-RS120	Shunt Release 120V ³	-	1	\$63
RMSP-RU120	Undervoltage Release 120V ³	-	1	\$63
RMSP-RUX	Undervoltage Release with Switch 120V ³	2 NO	1	\$86
RMSP-IB-100	Insulation Barrier ⁴	-	4	\$30
RMSP-DA-32HA	RMSC Contactor Adapter RMSP32	-	1	\$30
RMSP-DA-63A	RMSC Contactor Adapter RMSP63	-	1	\$30
RMSP-DA-95A	RMSC Contactor Adapter RMSP95	-	1	\$30
RMSP-PB-322	Phase Bus Parallel Circuit 63H	-	1	\$35
RMSP-PB-362	Phase Bus Parallel Circuit 32H	-	1	\$48
RMSP-MU45	Mounting Unit 32H	-	1	\$63
RMSP-MU55	Mounting Unit 63H	-	1	\$86
RMSP-MU70	Mounting Unit 100H	-	1	\$97
RMSP-PIL32	Push-In Lug (for connection to mounting unit)	-	1	\$30

¹ RMSP-63 cannot accept LX and LA together

² Magnetic units only

³ Cannot be used with RU or RUX

⁴ For RMSP-100 only

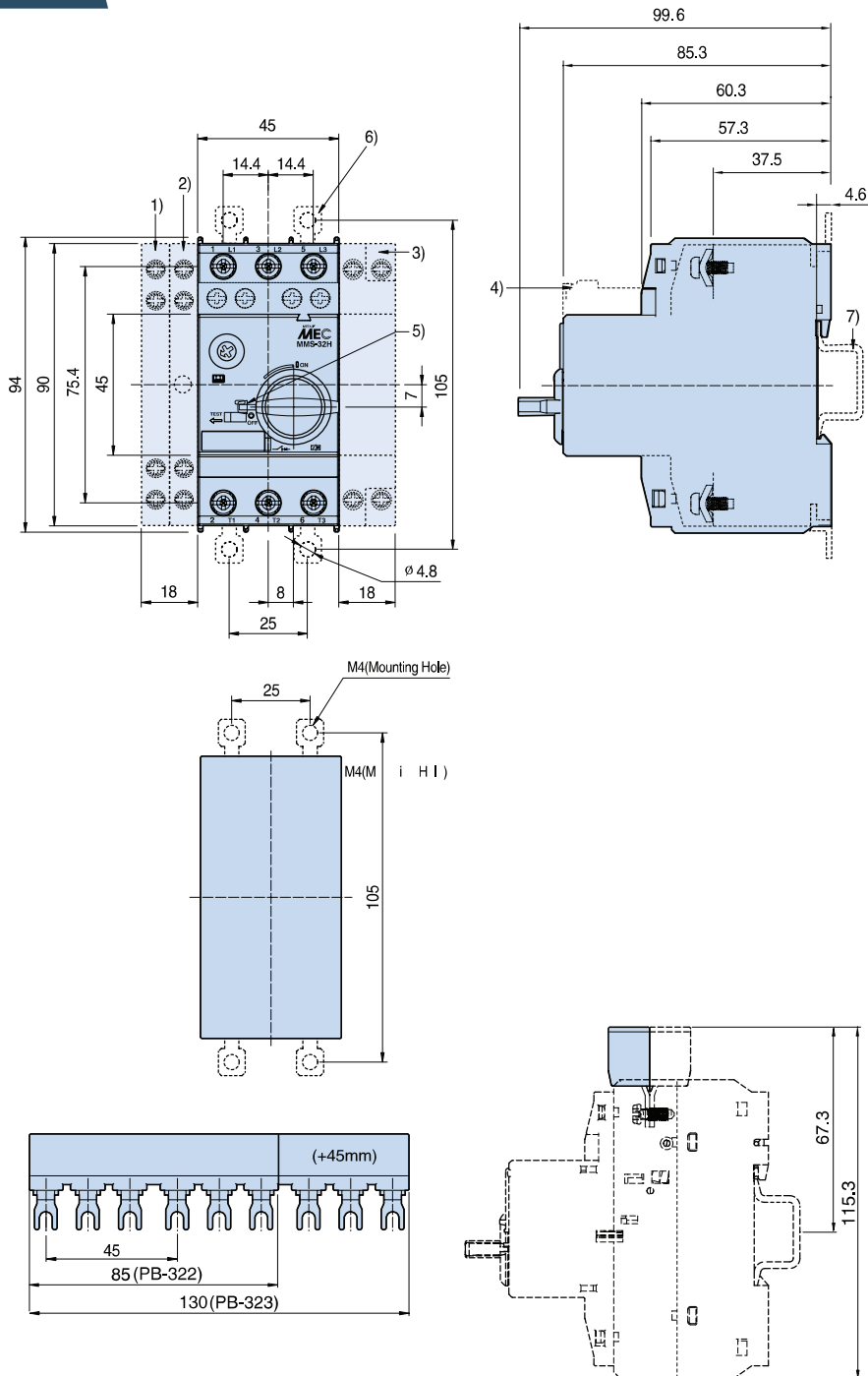
Price Effective July 1, 2025

MOTOR STARTER PROTECTOR DIMENSIONS

RMSP SERIES

RMSP-32H

Weight: 0.36 kg



- 1) Side auxiliary switch
- 2) Side magnetic trip alarm switch
- 3) Side shunt release or Side undervoltage release
- 4) Front auxiliary switch
- 5) Handle lock in OFF position (Ø5mm)
- 6) Push-in Lugs for screw mounting
- 7) 35mm standard mounting rail acc. to EN 50 022

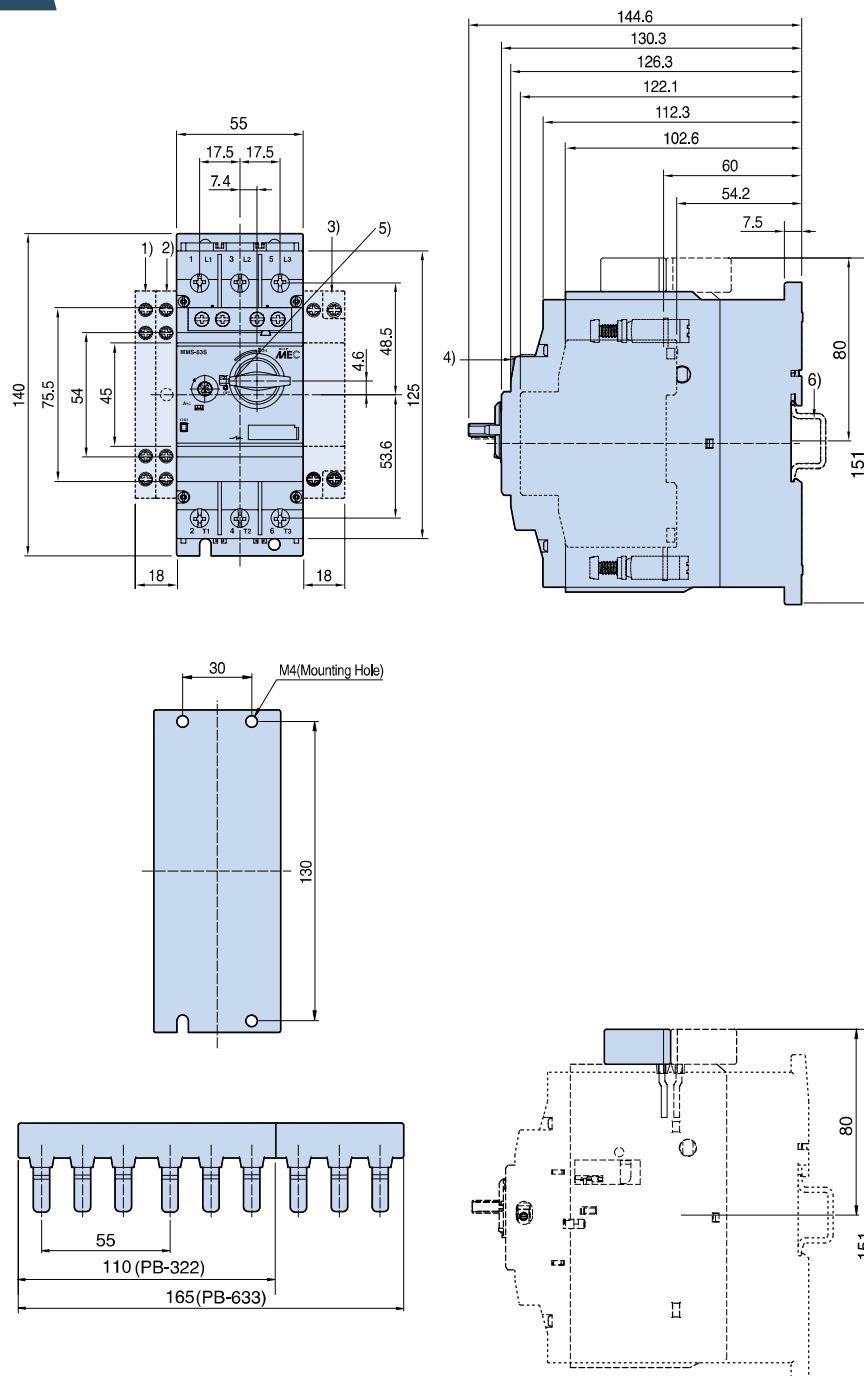
Dimensions are in mm (1 inch = 25.4 mm) .

MOTOR STARTER PROTECTOR DIMENSIONS

RMSP SERIES

RMSP-63H

Weight: 1 kg



- 1) Side auxiliary switch
- 2) Side magnetic trip alarm switch
- 3) Side shunt release or Side undervoltage release
- 4) Front auxiliary switch
- 5) Handle lock in OFF position (Ø5mm)
- 6) 35mm standard mounting rail acc. to EN 50 022

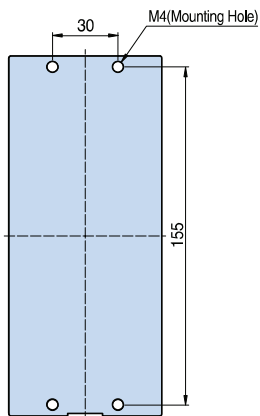
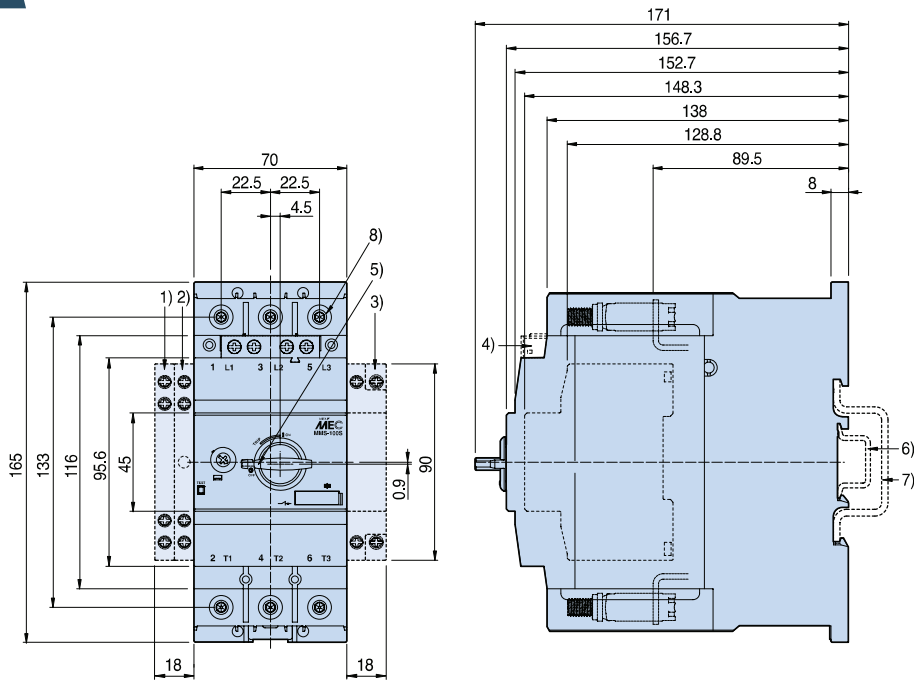
Dimensions are in mm (1 inch = 25.4 mm) .

MOTOR STARTER PROTECTOR DIMENSIONS

RMSP SERIES

RMSP-100H

Weight: 2.2 kg



- 1) Side auxiliary switch
- 2) Side magnetic trip alarm switch
- 3) Side shunt release or Side undervoltage release
- 4) Front auxiliary switch
- 5) Handle lock in OFF position (Ø5mm)
- 6) 35mm standard mounting rail acc. to EN 50 022
- 7) 75mm standard mounting rail acc. to EN 50 023
- 8) 4mm hexagon socket screw

Dimensions are in mm (1 inch = 25.4 mm) .