

750 DC & AC Right Angle Gearmotor Accessories

Build it Your Way

Now you can choose how you want your Bison 750 Series gearmotor to be built, using the same high quality components that have set the industry standard for over 50 years. Bison's gears and housings are precision machined to maximize power and service life as well as to minimize wear and maintenance. Lifetime oil lubrication provides efficient continuous operation and resistance to contaminants, ensuring fewer field failures and downtime.

There's a simple philosophy behind the design of every Bison Product: Start with the highest quality components and then through better design and manufacturing techniques, maximize the throughHPut those components can produce.

It's all about choices. Build the Bison 750 Series gearmotor your way with multiple mounting configurations. Choose a single, double, or hollow shaft, a footplate, a flange...Bison's manufacturing expertise guarantees that you get the gearmotor you need, along with the best in application engineering, customer service, and product performance. Go ahead. Build it your way.

1

Select Your Hollow Shaft Unit



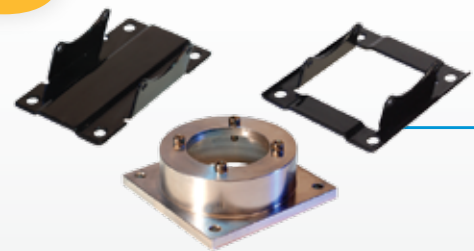
2

Select Your Shaft Configuration



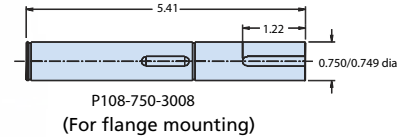
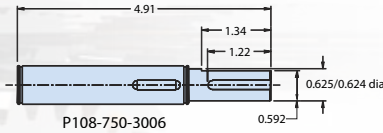
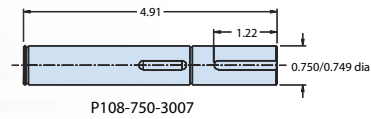
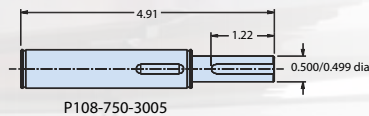
3

Select Your Mounting Style



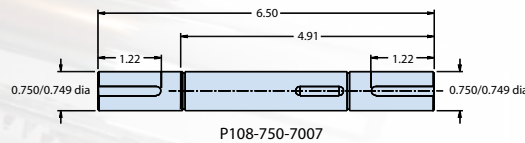
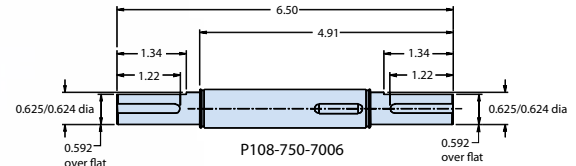
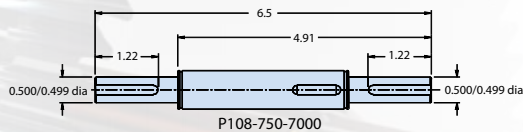
750 DC & AC Right Angle Gearmotor - Accessories

Single Shafts



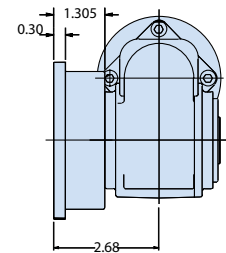
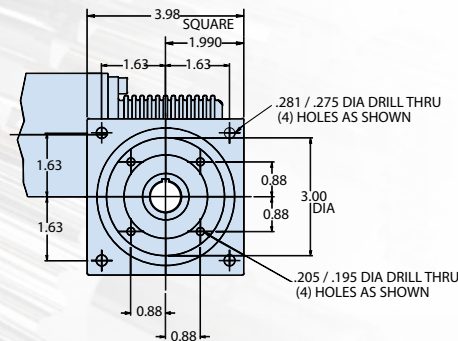
All shafts come standard with required keyways and retaining rings.

Double Shafts



All shafts come standard with required keyways and retaining rings.

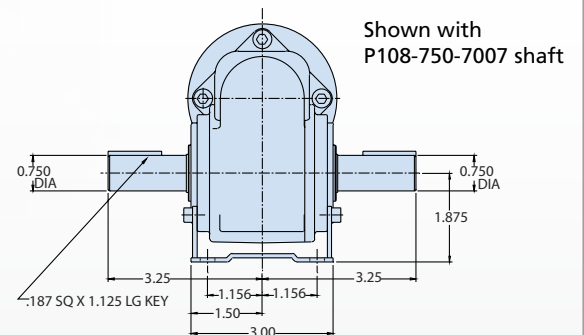
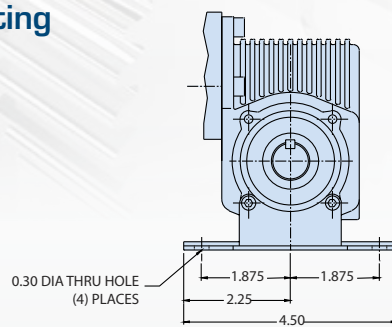
Flange Mounting



Competitive Mounting

Standard Bison footplate
P125-750-1000

Part#: P125-750-2000



Accessories

Bison Shaft Mount Encoder

Part Number	Voltage	Pulses	Channels	Weight
P208-010-0012	5	12	1	1
P208-010-0030	5	30	1	1
P208-010-0100	5	100	1	1
P208-010-2030	5	30	2	1

All mounting hardware and stub shaft included

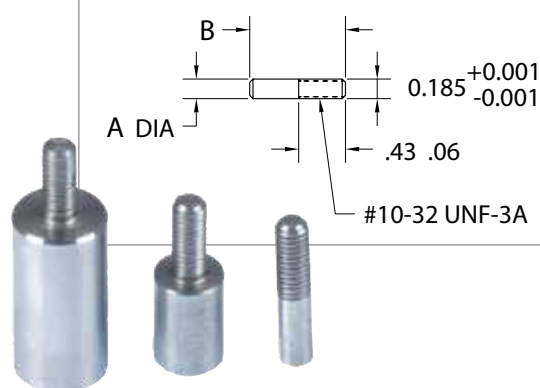


Armature Shaft Extension Kit

Part Number	A	B	Weight
108-100-0316	.184/.186"	0.88	1
108-100-0416	.246/.248"	0.88	1
108-100-0516	.309/.311"	1.03	1
108-100-0616	.371/.373"	1.03	1
108-100-0716	.434/.436"	1.43	1
108-100-0816	.496/.498"	1.43	1

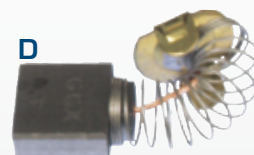
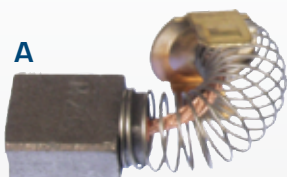
Threaded stub shafts fit Bison's PMDC Gearmotors under 1/2 HP.

Threaded Stub Shaft for 1/40-1/4HP DC Motors



Replacement Brushes

Part Number	Key
P158-200-2001	A
P158-200-2600	B
P158-200-2615	C
P158-200-9000	D
P158-406-0008	E
P158-200-2624	F
P158-200-2690	G
P158-060-2000	H



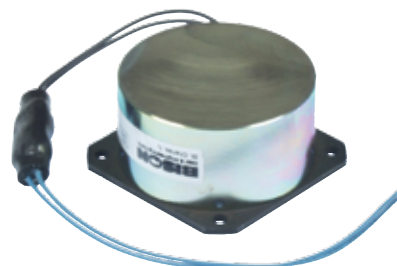
Power-Off Brakes*

Part Number	Voltage	Bolt Circle	Bore	Static Holding Torque (In-Lbs.)	Weight
P133-100-0003	115V	2.88	5/16"	3	2
P133-540-0007	115V	2.88	5/16"	7	2
P133-550-0018	115V	2.88	5/16"	18	2

All mounting hardware included

* Power off brakes should be used with the AC gearmotors only. Does not mount to 1/4 HP-480 Series motors, 1/2 HP or 1 HP motors. Call Bison at 1-800-AT-BISON to talk to an application engineer today.

The holding torque listed is specified at the motor shaft. Motor shaft holding torque can be calculated by dividing the gear ratio into the static output shaft torque, less 5% per stage of gearing.



Shaft Bushing 5/8" to 7/8"

Part Number	Weight
134-158-0200	1



Mounting Base 100 Series

Part Number	Gearcase	Shipping Wt.
P125-100-9998	100	1

Mounting Base 650 Series

Part Number	Gearcase	Shipping Wt
P125-650-5000	650	1

Mounting Base 746 Series

Part Number	Gearcase	Shipping Wt
P125-746-0500	746	1

Mounting Base 881 Series

Part Number	Gearcase	Shipping Wt
P125-880-0003	881	1



P125-100-9998 shown.

See website for additional mounting boxes.