

# Inverter Duty AC Gearmotors

DESIGNED FOR ROBUSTICITY™

## Specifications

Gearhead		Motor	Product Line Features
Gearing:	AGMA class 9 heat treated steel	Motor Type: 230V, 3 phase, 6-90 Hz	<ul style="list-style-type: none"> <li>Global safety recognition: UL, CUL</li> <li>Insulation system designed to meet NEMA MG 1 Section 31</li> <li>Ambient temperature 0° to 40°C</li> <li>Continuous duty</li> </ul>
Geartrain:	Engineered to handle up to 200% shockloading	Rotation: Reversible	
Housing:	Precision machined die cast aluminum	Bearings: Double shielded ball bearing support	
Lubrication:	Lifetime oil bath	Insulation: Class F (155°C)	
Bearings:	Needle and thrust ball, or ball bearing	Enclosure: TENV for 1/20 HP, TEFC for 1/4 and 1/2 HP	
Shafts:	Precision ground shaft seal diameters	Thermostat: Signal type; closed	
Mounting:	All position		

## Additional Information

Wiring diagram pages 88-91

See pages 86-87 for additional accessories

INVERTER DUTY GEARMOTORS

## 107 Series 3-Phase Inverter Duty 230V

Part Number	Rated Speed RPM @ 6hz	Rated Speed RPM @ 60hz	Rated Speed RPM @ 90hz	Rated Torque in-lbs @ 6hz	Rated Torque In-lbs @ 60hz	Rated Torque In-lbs @ 90hz	Input HP	Gear Ratio	Amps	Shipping Wt.
017-107-0007	24	245	368	12	12	7	1/20	6.7	0.24	7.5
017-107-0013	12	127	191	23	23	14	1/20	12.9	0.24	7.5
017-107-0025	6.3	65	98	45	45	27	1/20	25.2	0.24	7.5
017-107-0049	3.3	33	50	84	84	53	1/20	49.0	0.24	7.5
017-107-0096	1.7	17	26	100**	100**	100**	1/20	95.5	0.24	7.5

## 247 Series 3-Phase Inverter Duty 230V

Part Number	Rated Speed RPM @ 6hz	Rated Speed RPM @ 60hz	Rated Speed RPM @ 90hz	Rated Torque in-lbs @ 6hz	Rated Torque In-lbs @ 60hz	Rated Torque In-lbs @ 90hz	Input HP	Gear Ratio	Amps	Shipping Wt.
017-247-0005	35	350	526	38	38	25	1/4	5.0	0.75	12
017-247-0011	16.5	165	248	80	80	53	1/4	10.6	0.75	12
017-247-0019	9.2	92	138	144	144	96	1/4	19.1	0.75	12
017-247-0028	6.2	62	93	215	215	148	1/4	28.1	0.75	12
017-247-0058	3.0	30	45	300**	300**	272**	1/4	58.3	0.75	12
017-247-1102	1.7	17	25	350**	350**	350**	1/4	102.4	0.75	12
017-247-0216	0.8	8.1	12	310**	310**	310**	1/4	215.6	0.75	12

## 485 Series 3-Phase Inverter Duty 230V

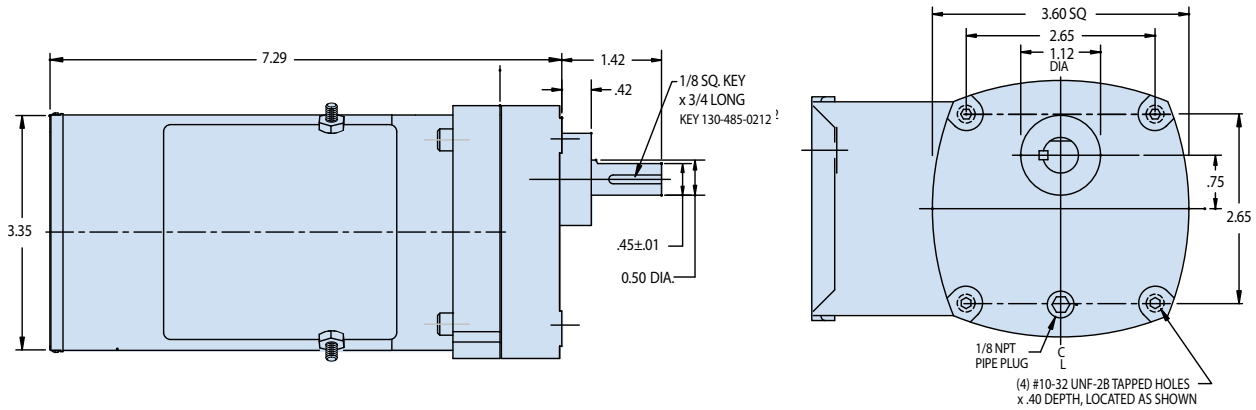
Part Number	Rated Speed RPM @ 6hz	Rated Speed RPM @ 60hz	Rated Speed RPM @ 90hz	Rated Torque in-lbs @ 6hz	Rated Torque In-lbs @ 60hz	Rated Torque In-lbs @ 90hz	Input HP	Gear Ratio	Amps	Shipping Wt.
017-485-0006	29	291	437	91	91	61	1/2	5.9	1.60	43
017-485-0010	18	178	267	150	150	100	1/2	9.8	1.60	43
017-485-0020	9.0	90	135	296	296	187	1/2	19.4	1.60	43
017-485-0028	6.3	63	94	423	423	283	1/2	27.8	1.60	43
017-485-0060	3.0	30	45	818	818	545	1/2	59.1	1.60	43
017-485-0089	2.0	20	30	950**	950**	950**	1/2	88.8	1.60	43
017-485-0131	1.3	13	20	950**	950**	950**	1/2	130.8	1.60	43

\*\* Output torque is gear limited.

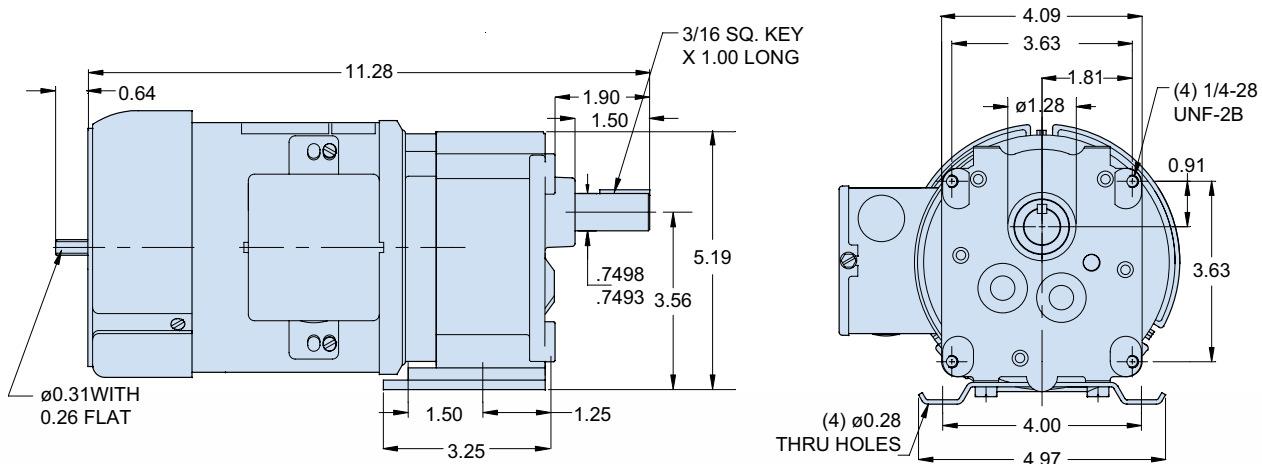
For 650 and 750 Series see pages 64-65

# Inverter Duty AC Gearmotors

## 107 3-Phase Inverter Duty 230V



## 247 3-Phase Inverter Duty 230V



## 485 3-Phase Inverter Duty 230V

