

Inspection Tags

new

Brady Inspection Timer

There's a lot going on in your facility. Relying on pen and paper alone to keep it all moving leaves room for gaps in safety and efficiency. Add this innovative Inspection Timer and keep track of your inspection needs at a glance.

It's all in the blinking LED lights that change color to visually indicate how much time you have left before the next inspection. After you've finished your inspection, reset it so you're ready for the next one. With a variety of mounting options and a rugged design you've got an inspection reminder for your tough industrial environments. With this timer, you also get:

- **Impactful and colorful reminders** that break through the grime of your facility
- **Varied timing options** for 7 days, 30 days, 90 days, 6 months and a year
- **Performance in harsh conditions** —IP65 rated so it withstands water, dust, extreme temperatures and more
- **Keeps your inspection timing top of mind** so your facility stays safe, efficient and compliant

Ideal for any location that needs an inspection, including AEDs, fire extinguishers, eyewash stations, forklifts and more



Catalog #	Description	Qty.
150740	7 day inspection timer	10/pack
150741	30 day inspection timer	10/pack
150742	90 day inspection timer	10/pack
150743	180 day inspection timer	10/pack
150744	365 day inspection timer	10/pack



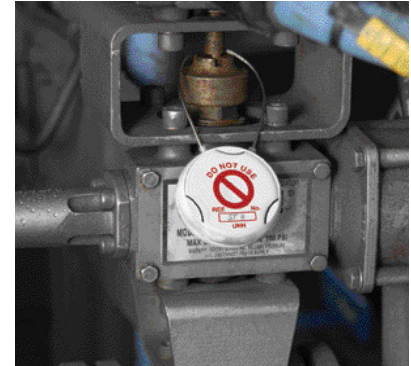
Facility Tags

Universal Tag Holder and Inserts

- Designed for the identification and qualification of lifting equipment, industrial plant, valves, calibration equipment and a variety of other applications
- System provides a clear inspection trail giving integrity and control of work carried out

Catalog #	Description	Qty.
UNI-UNH 12 P	Universal Tag Holder Kit w/ 12 in. Plastic Strap	1 kit*
UNI-UNH 6 P STRAP	Universal Tag Holder Kit w/ 6 in. Plastic Strip	1 kit*
UNI-UNH 9 P STRAP	Universal Tag Holder Kit w/ 9 in. Plastic Strip	1 kit*
UNI-UNH PC STRAPS	Universal Tag Plastic Coated Strips	1 kit*
UNI-UNH 9 S	Universal Tag Kit Steel	1 kit*
UNI-UNH S 6 STRAPS	Universal Tag Holder Kit w/ 6 in. Steel Strip	1 kit*

*Kit includes 20 holders, 20 straps and 1 marking pen.



Safe Working Load (SWL)

Catalog #	Size	Color	Qty.
UNI-UNI YELLOW	1.715 in. dia.	Yellow	100/pk
UNI-UNI RED	1.715 in. dia.	Red	100/pk
UNI-UNI BLUE	1.715 in. dia.	Blue	100/pk
UNI-UNI WHITE	1.715 in. dia.	White	100/pk
UNI-UNI GREEN	1.715 in. dia.	Green	100/pk
UNI-UNI ORANGE	1.715 in. dia.	Orange	100/pk
UNI-UNI PURPLE	1.715 in. dia.	Purple	100/pk



Next Inspection Due Date

Catalog #	Size	Color	Qty.
UNI-UNI 503 YELLOW	1.715 in. dia.	Yellow	100/pk
UNI-UNI 503 RED	1.715 in. dia.	Red	100/pk
UNI-UNI 503 B	1.715 in. dia.	Blue	100/pk
UNI-UNI 503 WHITE	1.715 in. dia.	White	100/pk
UNI-UNI 503 GREEN	1.715 in. dia.	Green	100/pk
UNI-UNI 503 ORANGE	1.715 in. dia.	Orange	100/pk
UNI-UNI 503 PURPLE	1.715 in. dia.	Purple	100/pk



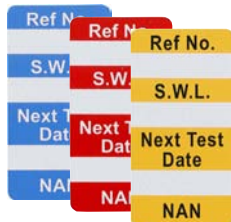
Catalog #	Size	Color	Qty.
UNI-UNI 504 YELLOW	1.715 in. dia.	Yellow	100/pk
UNI-UNI BLANK	1.715 in. dia.	Blank	100/pk

NanoTag® Holder and Inserts

- Ideal for the identification and qualification of lifting equipment and is designed to clearly display the Safe Working Load (SWL) or Next Test Date information
- Preprinted empty tag holders alert employees not to use equipment; tag inserts track inspection history and provide other information
- System provides a clear inspection trail giving integrity and control of work carried out

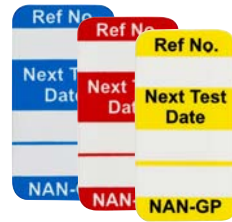
Catalog #	Description	Size	Qty.
NAN-H	Do Not Enter holder	11.25 in x 6 in	1 kit

*Kit includes 20 holders, 40 cable ties and 1 pen.



Safe Working Load (SWL)

Catalog #	Size	Color	Qty.
NAN-NAN YELLOW	1.325 in x 0.7 in	Yellow	100/pk
NAN-NAN RED	1.325 in x 0.7 in	Red	100/pk
NAN-NAN BLUE	1.325 in x 0.7 in	Blue	100/pk
NAN-NAN GREEN	1.325 in x 0.7 in	Green	100/pk
NAN-NAN ORANGE	1.325 in x 0.7 in	Orange	100/pk
NAN-NAN PURPLE	1.325 in x 0.7 in	Purple	100/pk
NAN-NAN WHITE	1.325 in x 0.7 in	Black	100/pk



Next Inspection Due Date

Catalog #	Size	Color	Qty.
NAN-GP Y	1.325 in x 0.7 in	Yellow	100/pk
NAN-GP R	1.325 in x 0.7 in	Red	100/pk
NAN-GP B	1.325 in x 0.7 in	Blue	100/pk
NAN-GP G	1.325 in x 0.7 in	Green	100/pk
NAN-GP O	1.325 in x 0.7 in	Orange	100/pk
NAN-GP P	1.325 in x 0.7 in	Purple	100/pk
NAN-GP W	1.325 in x 0.7 in	Black	100/pk

Inspection Tags

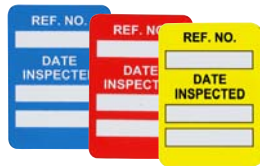
MicroTag® Holder and Inserts

- Ideal for identifying small plant equipment, lifting gear and safety harnesses
- Color coded and date qualified, the system also has the ability to render equipment in a 'prohibition status' should it be found to be faulty between inspection dates.
- Helps meet OSHA regulations for personal fall arrest systems



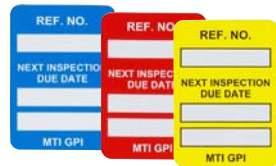
Catalog #	Description	Size	Color	Qty.
MIC-MTHSTD04	Microtag Kit*	1.5 in x 3.188 in	White	1 kit
MIC-BLANK -FG	Blank Microtag Kit*	1.5 in x 3.188 in	White	1 kit

*Kit includes 20 holders, 40 cables ties and 1 pen



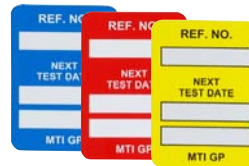
Date Inspected

Catalog #	Color	Qty.
MIC-MTIUSA Y	Yellow	100/pk
MIC-MTIUSA R	Red	100/pk
MIC-MTIUSA B	Blue	100/pk
MIC-MTIUSA G	Green	100/pk
MIC-MTIUSA O	Orange	100/pk
MIC-MTIUSA P	Purple	100/pk
MIC-MTIUSA W	White	100/pk



Next Inspection Due Date

Catalog #	Color	Qty.
MIC-MTIGPI Y	Yellow	100/pk
MIC-MTIGPI R	Red	100/pk
MIC-MTIGPI B	Blue	100/pk
MIC-MTIGPI G	Green	100/pk
MIC-MTIGPI O	Orange	100/pk
MIC-MTIGPI P	Purple	100/pk
MIC-MTIGPI W	White	100/pk



Next Test Date

Catalog #	Color	Qty.
MIC-MTIGP Y	Yellow	100/pk
MIC-MTIGP R	Red	100/pk
MIC-MTIGP B	Blue	100/pk
MIC-MTIGP G	Green	100/pk
MIC-MTIGP O	Orange	100/pk
MIC-MTIGP P	Purple	100/pk
MIC-MTIGP W	White	100/pk



Catalog #	Color	Qty.
MIC-MTI PLAIN	Blank Tag	100/pk
MIC-MTI 500	Hydraulic Tag	100/pk

Scafftag® Scaffolding Tags

- **Heavy-duty Laminated Polyester (LAM)** - Durable polyester laminate tags exceed OSHA's 50-lb. pull force requirement for lockout tagout and include 3/8 in. heavy-duty brass grommets. Nylon ties included.
- **Economy Polyester (POLY)** - Rigid polyester surface exceeds OSHA's 50-lb. pull force requirement for lockout tagout. Tags include 3/8 in. rolled brass eyelets. Nylon ties included.
- **Cardstock (CARD)** - Cardstock tags provide an economical, yet durable, material option. Attachment strings included.



Tag Holder with clear front pocket

- Accommodates 5.75 in. x 3 in. tags

Catalog #	Description	Qty
48111	Holder Only	12 in. x 4.5 in. 1
48112	Holder Kit (holder and 3 tags)	1 kit

86452	5.75 in. x 3 in.	LAM	10/pk
89017	7 in. x 4 in.	LAM	10/pk
86572	5.75 in. x 3 in.	POLY	10/pk
86627	7 in. x 4 in.	POLY	10/pk
86682	5.75 in. x 3 in.	CARD	100/pk

86453	5.75 in. x 3 in.	LAM	10/pk
89018	7 in. x 4 in.	LAM	10/pk
86573	5.75 in. x 3 in.	POLY	10/pk
86628	7 in. x 4 in.	POLY	10/pk
86683	5.75 in. x 3 in.	CARD	100/pk
86738	7 in. x 4 in.	CARD	100/pk

86454	5.75 in. x 3 in.	LAM	10/pk
86502	7 in. x 4 in.	LAM	10/pk
86574	5.75 in. x 3 in.	POLY	10/pk
86629	7 in. x 4 in.	POLY	10/pk
86684	5.75 in. x 3 in.	CARD	100/pk
86739	7 in. x 4 in.	CARD	100/pk

Scafftag® Scaffolding Tags

- Provides system, procedural and legal compliance for scaffolds on worksites
- Provides a clear inspection trail giving integrity and control of work carried out
- Essential for companies working with ISO9000 clients



Catalog #	Description	Size	Color	Qty.
SCAF-STH 132BLA-FG	Holders - Blank	11.75 in x 3.5 in	White	10/pk
SCAF-STH 146BLA-FG	Holders - Blank	11.75 in x 3.5 in	Red	10/pk
SCAF-STH 153	Holders - Eng. / Sp.	11.75 in x 3.5 in	White	10/pk
SCAF-STH 132 SP	Holders - Spanish	11.75 in x 3.5 in	White	10/pk
SCAF-STH 132 FR	Holders - French	11.75 in x 3.5 in	White	10/pk
SCAF-STH132	Holders - English	11.75 in x 3.5 in	White	10/pk
SCAF-STH146	Holders - English	11.75 in x 3.5 in	Red	10/pk
SCAF-STH132A	Standard Kit*	11.75 in x 3.5 in	White	1 kit

Catalog #	Description	Size	Color	Qty.
SCAF-STSI751	Scafftag II Inserts	7.625 in x 5.75 in	Green	100/pk
SCAF2-STHUSA	Scafftag II Holder	11.5 in x 6 in	White	10/pk
SCAF2-STHUSAA	Scafftag II Kit*	11.5 in x 6 in	White	1 kit

*Kits include 10 holders, 20 inserts and 1 pen

*Kits include 10 holders, 20 inserts and 1 pen



SCAF-STSI 601
7.625 in x 3.25 in 100/pk



SCAF-STSI 640
7.625 in x 3.25 in 100/pk



SCAF-STSI 708
7.625 in x 3.25 in 100/pk



SCAF-STSI 1042
6.75 in x 3.25 in 100/pk



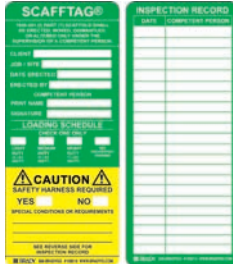
SCAF-STSI 539
6.75 in x 3.25 in 100/pk



SCAF-STSI 694
7.625 in x 3.25 in 100/pk



SCAF-STSI 681
7.625 in x 3.25 in 100/pk



SCAF-STSI 311
7.625 in x 3.25 in 100/pk



SCAF-STSI 639
7.625 in x 3.25 in 100/pk



SCAF-STSI 310 STD
7.625 in x 3.25 in 100/pk



SCAF-STSI 602
6.75 in x 3.25 in 100/pk



SCAF-STSIW 510
7.625 in x 3.25 in 100/pk



SCAF-STSIP 501
7.625 in x 3.25 in 100/pk



SCAF-STSI 629
7.625 in x 3.25 in 100/pk



SCAF-STSI 772
7.625 in x 3.25 in 100/pk

Inspection Tags

Forklifttag® Holder and Inserts

- Assists with pre-use preventative maintenance and forklift safety inspections
- Permanently attaches to the cage of the forklift truck and displays the daily or pre-shift inspections be carried out



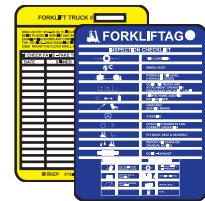
FLT-ETSI 519



FLT-ETSI 537



FLT-ETSI 51



FLT-ETSI 583

Catalog #	Description	Size	Color	Qty.
FLT-ETSH9	Forklift Holder	11.5 in. x 6.000 in.	White	10/pk
FLT-ETSI 519	Inserts	5.75 in. x 7.625 in.	Green	100/pkg
FLT-ETSI 537	Inserts	5.75 in. x 7.625 in.	Green	100/pkg
FLT-ETSI 51	Inserts	5.75 in. x 7.625 in.	Blue	100/pkg
FLT-ETSI 583	Inserts	5.75 in. x 7.625 in.	Blue	100/pkg
FLT-ETSH9A	Forklift Kit*	11.5 in. x 6.000 in.		1 kit

*Kit includes 10 holders, 10 FLT-ETSI 51 inserts and 1 pen

LadderTags™ Holder and Inserts

- Supports a complete ladder safety management system
- Assists with meeting OSHA standards which require ladders to be checked for damage, faults and wear before use by an authorized user
- Holder can be attached by hanger holes or included adhesive

Catalog #	Description	Size	Color	Qty.
LAD-EITH12	Holders	8.25 in. x 2.25 in.	White	10/pk
LAD-EITL 500	Inserts	6.5 in x 2 in	Yellow	100/pkg
LAD-EITL 512	Inserts	6.5 in x 2 in	Green	100/pkg
LAD-EITL521	Inserts	6.5 in x 2 in	Yellow	100/pkg
LAD-EITH/L12	Kit*	8.25 in. x 2.25 in.	White	1 kit

*Kit includes 10 holders, 10 LAD-EITL 500 inserts and 1 pen



LAD-EITL 500



LAD-EITL 512



LAD-EITL521

Facility Tags

MultiTag® Holder and Inserts

- Assists with the identification and preventative maintenance requirements of a range of equipment
- Assists with the requirements of CFR 1926.1053 (a) (12), (b) (17) (i) (ii) and CFR 1910.25 (d) (1) (X).

Catalog #	Description	Size	Color	Qty.
MUL-EITHUSA01	Multitag Holder	8.25 in x 2.25 in	White	10/pk
MUL-BLANK - FG	Blank Holder	8.25 in x 2.25 in	White	10/pk
MUL-EITL 540	Multitag Inserts	6.5 in x 2 in	Yellow	100/pkg
MUL-EITL535	Multitag Inserts	6.5 in x 2 in	Green	100/pkg
MUL-EITHUSA01A	Multitag Kit	8.25 in x 2.25 in	White	1 kit

*Kit includes 10 holders, 10 MUL-EITL535 inserts and 1 pen



MUL-EITL 540



MUL-EITL535

EntryTag® Holder and Inserts

- Works in conjunction with existing permit-to-work systems and assists in meeting OSHA confined space standards
- The system states the minimum requirements of entry to the confined space or whether the area is in prohibition and cannot be entered



Catalog #	Description	Size	Qty.
ENT-ETSH157	Do Not Enter holder	11.25 in x 6 in	10/pk
ENT-ETSH 500	Confined Space holder	11.25 in x 6 in	10/pk
ENT-ETSH 505	Do Not Use Equipment holder	11.25 in x 6 in	10/pk
ENT-ETSH 506	Manlift holder	11.25 in x 6 in	10/pk
ENT-ETSH BLANK-FG	Blank holder	11.25 in x 6 in	10/pk
ENT-ETSH157A	Do Not Enter kit*	11.25 in x 6 in	1 kit

*Kit includes 10 holders, 10 status inserts and 1 pen.

 ENT-ETSI532 5.75 in x 7.625 in 100/pk	 ENT-ETSI 549 5.75 in x 7.625 in 100/pk	 ENT-ETSI 594 5.75 in x 7.625 in 100/pk	 ENT-ETSI 567 5.75 in x 7.625 in 100/pk	 MUL-EITL 230 2 in x 6.5 in 100/pk
---	--	--	--	---

Confined Space Tags

- **Heavy-duty Laminated Polyester (LAM)** - Durable polyester laminate completely encapsulates and protects graphics while withstanding moisture, grease, chemicals and extreme temperatures. These tags exceed OSHA's 50-lb. pull force requirement for lockout tagout and include 3/8 in. heavy duty brass grommets. Nylon ties included.
- **Economy Polyester (POLY)** - Rigid polyester surface exceeds OSHA's 50-lb. pull force requirement for lockout tagout. Tags include 3/8 in. rolled brass eyelets. Nylon ties included.
- **Cardstock (CARD)** - Cardstock tags provide an economical, yet durable, material option. Attachment strings included.

 49234 5.75 in. x 3 in. LAM 25/pk 49228 5.75 in. x 3 in. POLY 25/pk	 50275 5.75 in. x 3 in. LAM 25/pk 49227 5.75 in. x 3 in. POLY 25/pk	 66322 5.75 in. x 3 in. LAM 25/pk 66324 5.75 in. x 3 in. POLY 25/pk 65457 5.75 in. x 3 in. CARD 25/pk	
 50248 5.75 in. x 3 in. LAM 25/pk 50282 5.75 in. x 3 in. POLY 25/pk	 50287 5.75 in. x 3 in. LAM 25/pk 50286 5.75 in. x 3 in. POLY 25/pk	 50291 5.75 in. x 3 in. LAM 25/pk 50290 5.75 in. x 3 in. POLY 25/pk	 65299 5.75 in. x 3 in. LAM 25/pk 65270 5.75 in. x 3 in. POLY 25/pk 65456 5.75 in. x 3 in. CARD 25/pk

Inspection Tags

ChemTag® Holder and Inserts

- Places first response information at the location where immediate access is needed.
- Identifies and controls hazardous substances and assists with the requirements of CFR 1910.1200 (A) (1)

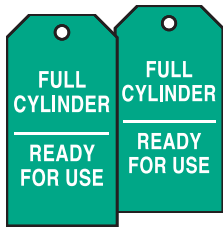


Catalog #	Description	Size	Qty.
CHEM-CTHUSA01	Holder	11.25 in x 6 in	10/pk
CHEM-CTH BLANK -FG	Blank Holder	11.25 in x 6 in	10/pk
CHEM-CTI500	Insert	5.75 in x 7.625 in	100/pk
CHEM-CTSH	kit		1 kit

*Kit includes 10 holders, 10 CHEM-CTI500 inserts and 1 pen.

Cylinder Status Tags

- Clearly inform user of status of cylinder contents
- Economy Polyester (POLY) includes nylon fasteners
- Cardstock (CARD) includes string fasteners



17926 5.75 in. x 3 in. POLY 10/pk
17925 5.75 in. x 3 in. CARD 100/pk



17928 5.75 in. x 3 in. POLY 10/pk
17927 5.75 in. x 3 in. CARD 100/pk



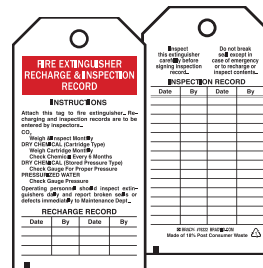
17924 5.75 in. x 3 in. POLY 10/pk
17923 5.75 in. x 3 in. CARD 100/pk



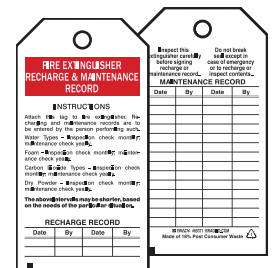
Facility Tags

Fire Extinguisher Inspection Tags

- Economy Polyester (POLY) meet OSHA's 50-lb. pull force requirement for tagout and have moderate chemical and UV resistance
- Tags meet OSHA Standard 1910.145 for accident prevention
- Withstands moisture, grease and dirt
- Nylon ties included



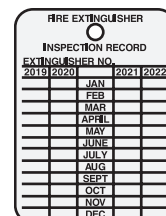
76222 5.75 x 3 in. POLY 25/pk



65371 5.75 x 3 in. POLY 25/pk

Aluminum Fire Extinguisher Inspection Tags

- Rigid aluminum won't rust, tear or fade when used in harsh outdoor applications
- Use permanent marking pen or hole punch to mark inspection
- Tags begin with current year
- Wire ties included



103632 3 x 2.25 in. ALUM 10/pk

Isolation Blind Tags

- Made from 10-mil polyester and has excellent outdoor weather resistance
- Tag includes 3/8 in. dia. hole with rolled brass eyelet and 25 nylon cable ties
- Exceeds OSHA 50-lb pull strength requirement for tagout



132421 5.75 in. x 3 in. CARD 25/pk



132422 5.75 in. x 3 in. CARD 25/pk



132424 5.75 in. x 3 in. CARD 25/pk



132423 5.75 in. x 3 in. CARD 25/pk



132425 5.75 in. x 3 in. CARD 25/pk

Flag Style Blind Tag

- Made from B-851 polyester (10-mil)
- 3/8 in. diameter hole with rolled brass eyelet
- Excellent outdoor weather resistance and is highly visual for safety warnings
- Exceeds OSHA 50-lb pull strength requirement
- Includes 25 nylon cable ties



Catalog #	Legend	Size	Color	Qty.
132452	Install Blind Here	2 in. x 20 in.	Black on Green	25
132453	Isolation Blind	2 in. x 20 in.	Black on Red	25
132454	Blind Installed	2 in. x 20 in.	Black on Red	25

Customize It

Call Brady Customer Service to customize with text, serialization, and perforation.

Isolation Tags

- To help control mechanical and electrical isolation procedures and prevent inadvertent energizing of the system
- Perforated tag consists of two identical sections which are completed by the person in charge



Catalog # 100-ISO 08 Color 7.625 in x 3.25 in Qty. 100/pk

Flange Joint Tags

- To assist in the inspection, modification and maintenance throughout the flange break inspection process
- Tag is divided into three parts by two perforations and assists the user to clearly identify the various stages of the operation from the initial break to the re-energization of the system



Catalog # 833763 Color 7.625 in x 3.25 in Qty. 10/pk

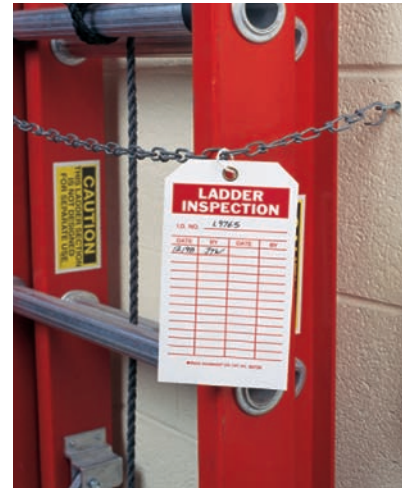


Catalog # 833764 Color 7.625 in x 3.25 in Qty. 10/pk

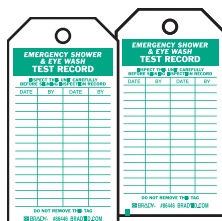
Inspection Tags

Inspection / Material Control Tags

- Tags meet OSHA Standard 1910.145 for accident prevention
- **Heavy-duty Laminated Polyester (LAM)** meet OSHA's 50 lb. pull force requirement for tagout and have superior chemical resistance. Plastic tags are encapsulated in matte polyester laminate for superior durability. Nylon ties included.
- **Economy Polyester (POLY)** meet OSHA's 50-lb. pull force requirement for tagout and have moderate chemical and UV resistance. Nylon ties included.
- **Cardstock (CARD)** provide an economical, yet durable, material option. Attachment strings included.



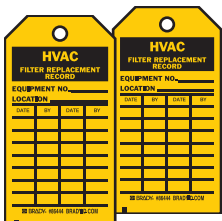
86435 5.75 x 3 in. LAM 10/pk
 86497 7 x 4 in. LAM 10/pk
 86562 5.75 x 3 in. POLY 10/pk
 86617 7 x 4 in. POLY 10/pk
 86672 5.75 x 3 in. CARD 100/pk
 86727 7 x 4 in. CARD 100/pk



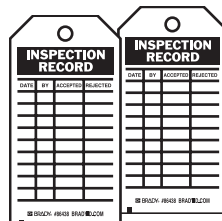
86446 5.75 x 3 in. LAM 10/pk
 86508 7 x 4 in. LAM 10/pk
 86560 5.75 x 3 in. POLY 10/pk
 86615 7 x 4 in. POLY 10/pk
 86670 5.75 x 3 in. CARD 100/pk
 86725 7 x 4 in. CARD 100/pk



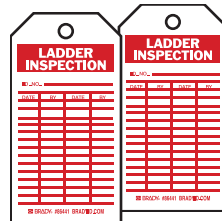
86437 5.75 x 3 in. LAM 10/pk
 86499 7 x 4 in. LAM 10/pk
 86564 5.75 x 3 in. POLY 10/pk
 86619 7 x 4 in. POLY 10/pk
 86674 5.75 x 3 in. CARD 100/pk
 86729 7 x 4 in. CARD 100/pk



86444 5.75 x 3 in. LAM 10/pk
 86506 7 x 4 in. LAM 10/pk
 86558 5.75 x 3 in. POLY 10/pk
 86613 7 x 4 in. POLY 10/pk
 86668 5.75 x 3 in. CARD 100/pk
 86723 7 x 4 in. CARD 100/pk



86438 5.75 x 3 in. LAM 10/pk
 86500 7 x 4 in. LAM 10/pk
 86565 5.75 x 3 in. POLY 10/pk
 86620 7 x 4 in. POLY 10/pk
 86675 5.75 x 3 in. CARD 100/pk
 86730 7 x 4 in. CARD 100/pk



86441 5.75 x 3 in. LAM 10/pk
 86503 7 x 4 in. LAM 10/pk
 86555 5.75 x 3 in. POLY 10/pk
 86610 7 x 4 in. POLY 10/pk
 86665 5.75 x 3 in. CARD 100/pk
 86720 7 x 4 in. CARD 100/pk



86447 5.75 x 3 in. LAM 10/pk
 86509 7 x 4 in. LAM 10/pk
 86561 5.75 x 3 in. POLY 10/pk
 86616 7 x 4 in. POLY 10/pk
 86671 5.75 x 3 in. CARD 100/pk
 86726 7 x 4 in. CARD 100/pk



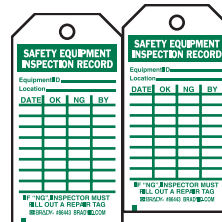
86445 5.75 x 3 in. LAM 10/pk
 86559 5.75 x 3 in. POLY 10/pk
 86614 7 x 4 in. POLY 10/pk
 86669 5.75 x 3 in. CARD 100/pk
 86724 7 x 4 in. CARD 100/pk



86449 5.75 x 3 in. LAM 10/pk
 86511 7 x 4 in. LAM 10/pk
 86569 5.75 x 3 in. POLY 10/pk
 86624 7 x 4 in. POLY 10/pk
 86679 5.75 x 3 in. CARD 100/pk
 86734 7 x 4 in. CARD 100/pk



86442 5.75 x 3 in. LAM 10/pk
 86504 7 x 4 in. LAM 10/pk
 86556 5.75 x 3 in. POLY 10/pk
 86611 7 x 4 in. POLY 10/pk
 86666 5.75 x 3 in. CARD 100/pk
 86721 7 x 4 in. CARD 100/pk



86443 5.75 x 3 in. LAM 10/pk
 86505 7 x 4 in. LAM 10/pk
 86557 5.75 x 3 in. POLY 10/pk
 86612 7 x 4 in. POLY 10/pk
 86667 5.75 x 3 in. CARD 100/pk
 86722 7 x 4 in. CARD 100/pk



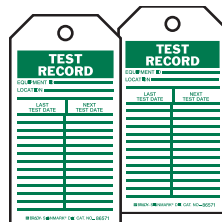
86439 5.75 x 3 in. LAM 10/pk
 86501 7 x 4 in. LAM 10/pk
 86566 5.75 x 3 in. POLY 10/pk
 86621 7 x 4 in. POLY 10/pk
 86676 5.75 x 3 in. CARD 100/pk
 86731 7 x 4 in. CARD 100/pk



86450 5.75 x 3 in. LAM 10/pk
 86512 7 x 4 in. LAM 10/pk
 86570 5.75 x 3 in. POLY 10/pk
 86625 7 x 4 in. POLY 10/pk
 86680 5.75 x 3 in. CARD 100/pk
 86735 7 x 4 in. CARD 100/pk



86436 5.75 x 3 in. LAM 10/pk
 86498 7 x 4 in. LAM 10/pk
 86563 5.75 x 3 in. POLY 10/pk
 86673 5.75 x 3 in. CARD 100/pk
 86728 7 x 4 in. CARD 100/pk



86451 5.75 x 3 in. LAM 10/pk
 86513 7 x 4 in. LAM 10/pk
 86571 5.75 x 3 in. POLY 10/pk
 86626 7 x 4 in. POLY 10/pk
 86681 5.75 x 3 in. CARD 100/pk
 86736 7 x 4 in. CARD 100/pk



86448 5.75 x 3 in. LAM 10/pk
 86510 7 x 4 in. LAM 10/pk
 86568 5.75 x 3 in. POLY 10/pk
 86623 7 x 4 in. POLY 10/pk
 86678 5.75 x 3 in. CARD 100/pk
 86733 7 x 4 in. CARD 100/pk