

### SINGLE GROOVE SHEAVES COMBINATION GROOVE FOR "4L" or "A" Belts and "5L" or "B" Belts

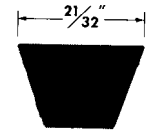


TABLE No. 1

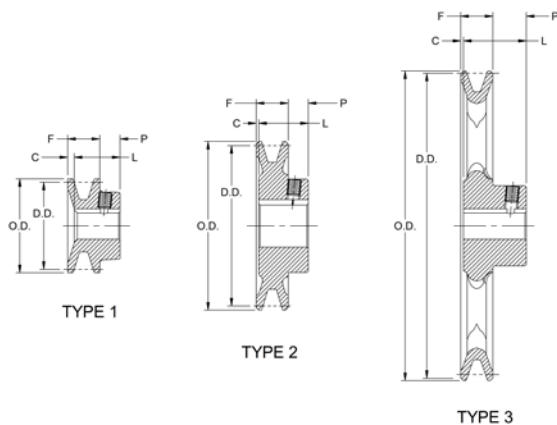
STOCK SIZES - FINISHED BORE

PART No.	DIAMETERS			TYPE	STOCK BORES MARKED "X"												DIMENSIONS				WT. LBS
	OUT-SIDE	DATUM "A"	DATUM "B"		1/2"	5/8"	3/4"	7/8"	15/16"	1"	1 1/8"	1 3/16"	1 1/4"	1 3/8"	1 7/16"	F	L	P	C		
▲BK24	2.40	1.80	2.20	1	X	X	X									0.88	1.16	0.44	0.16	0.69	
▲BK25	2.50	1.90	2.30	1	X	X	X	X								0.88	1.16	0.44	0.16	0.74	
▲BK26	2.60	2.00	2.40	1	X	X	X	X								0.88	1.16	0.44	0.16	0.8	
▲BK27	2.70	2.10	2.50	2	X	X	X	X								0.88	1.16	0.44	0.16	0.86	
▲BK28	2.95	2.20	2.60	2	X	X	X	X								0.88	1.16	0.44	0.16	1.03	
▲BK30	3.15	2.40	2.80	2	X	X	X	X								0.88	1.16	0.44	0.16	1.17	
▲BK32	3.35	2.60	3.00	2	X	X	X	X								0.88	1.16	0.44	0.15	1.28	
BK34	3.55	2.80	3.20	2	X	X	X	X		X	X					0.88	1.16	0.41	0.13	1.5	
BK36	3.75	3.00	3.40	2	X	X	X	X		X	X					0.88	1.16	0.41	0.12	1.7	
BK40	3.95	3.20	3.60	2	X	X	X	X		X	X					0.88	1.15	0.41	0.13	1.81	
BK45	4.25	3.50	3.90	2	X	X	X	X		X	X					0.88	1.16	0.41	0.13	2.01	
BK47	4.45	3.70	4.10	2	X	X	X	X		X	X					0.88	1.16	0.41	0.12	2.35	
BK50	4.75	4.00	4.40	3	X	X	X	X		X	X					0.88	1.16	0.41	0.12	2.29	
BK52	4.95	4.20	4.60	3	X	X	X	X	X	X	X					0.88	1.16	0.41	0.13	2.23	
BK55	5.25	4.50	4.90	3	X	X	X	X		X	X	X				0.88	1.16	0.41	0.12	2.6	
BK57	5.45	4.70	5.10	3		X	X	X	X	X	X					0.88	1.16	0.41	0.12	2.54	
BK60	5.75	5.00	5.40	3	X	X	X	X		X	X	X				0.88	1.16	0.41	0.13	3.04	
BK62	5.95	5.20	5.60	3	X	X	X	X	X	X	X					0.88	1.16	0.41	0.13	2.98	
BK65	6.25	5.50	5.90	3		X	X	X		X	X					0.88	1.16	0.41	0.13	3.16	
BK67	6.45	5.70	6.10	3		X	X	X		X	X					0.88	1.16	0.41	0.13	3.73	
BK70	6.75	6.00	6.40	3		X	X		X	X	X			X		0.88	1.47	0.66	0.06	4.28	
BK72	6.95	6.20	6.60	3			X		X	X	X			X		0.88	1.47	0.66	0.06	4.44	
BK75	7.25	6.50	6.90	3			X		X	X	X			X		0.88	1.47	0.66	0.06	4.1	
BK77	7.45	6.70	7.10	3			X		X	X	X			X		0.88	1.47	0.66	0.06	5.31	
BK80	7.75	7.00	7.40	3		X	X	X		X	X	X		X		0.88	1.47	0.66	0.06	5.01	
BK85	8.25	7.50	7.90	3			X		X	X	X			X		0.88	1.47	0.66	0.06	5.59	
BK90	8.75	8.00	8.40	3			X	X	X	X	X			X		0.88	1.47	0.66	0.06	6.02	
BK95	9.25	8.50	8.90	3			X		X	X	X			X		0.88	1.47	0.66	0.06	6.77	
BK100	9.75	9.00	9.40	3			X	X	X	X	X	X		X		0.88	1.47	0.66	0.06	5.99	
BK105	10.25	9.50	9.90	3			X		X	X	X			X		0.88	1.47	0.66	0.06	7.15	
BK110	10.75	10.00	10.40	3			X		X	X	X			X		0.88	1.47	0.66	0.06	8.07	
BK115	11.25	10.50	10.90	3					X					X		0.88	1.47	0.66	0.06	8.29	
BK120	11.75	11.00	11.40	3					X					X		0.88	1.47	0.66	0.06	8.79	
BK130	12.75	12.00	12.40	3					X	X	X			X		0.88	1.47	0.66	0.06	10.62	
BK140	13.75	14.00	13.40	3					X	X	X			X		0.88	1.47	0.66	0.06	10.16	
BK160	15.75	15.00	15.40	3					X	X	X	X		X		0.88	1.47	0.66	0.06	13.7	
BK190	18.75	18.00	18.40	3					X	X	X	X	X	X		0.88	1.47	0.66	0.06	16.19	

For bores not usually encountered, use FHP Bushings shown on Page A-6.

★ P = 1/32" and C = 1/8" for 1" Bores and Smaller.

▲ NOTE - DO NOT USE THESE "BK" SHEAVES WITH "B" GRIPNOTCH BELT RATINGS.



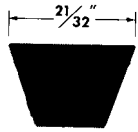
◆ ◆  
HOLLOW HEAD  
SETScrew  
◆ ◆  
STATICALLY  
BALANCED  
◆ ◆

STANDARD KEYSEATS

TABLE No. 2

BORE RANGE	KEYSEAT
1/2"	None
5/8 to 7/8	3/16" x 3/32"
15/16 to 1 1/4	1/4 x 1/8
1 7/16	3/8 x 3/16





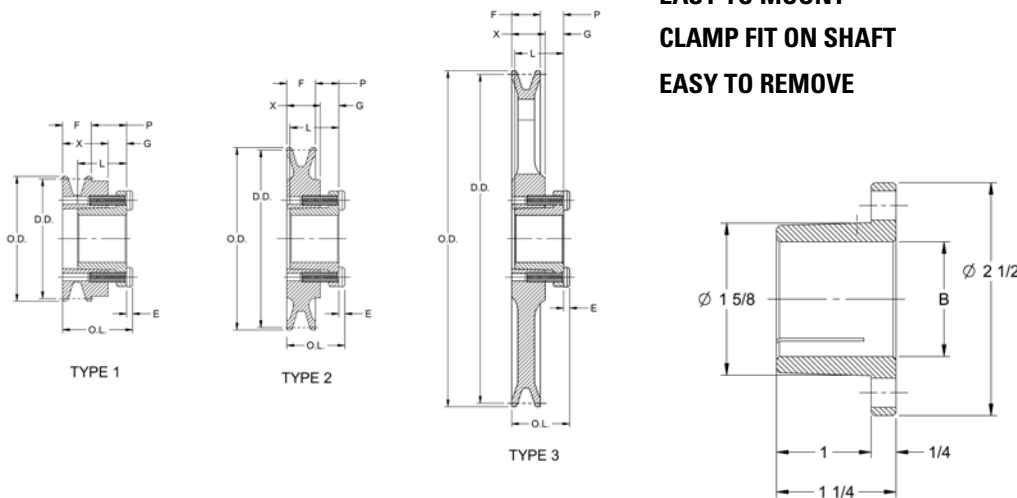
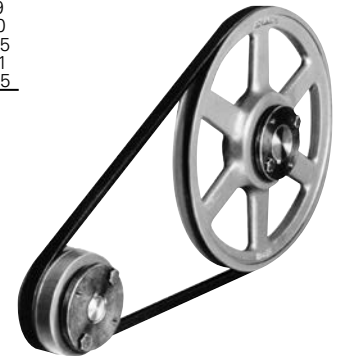
## SINGLE GROOVE SHEAVES COMBINATION GROOVE FOR "4L" or "A" Belts and "5L" or "B" Belts

TABLE No. 1

STOCK SIZES - WITH SPLIT TAPER BUSHINGS

PART NO.	DIAMETERS			TYPE	DIMENSIONS								WT. LBS. LESS BUSH.
	O.D.	DATUM "A"	DATUM "B"		O.L.	F	L	P	C	X	G	E	
BK30H	3.15	2.40	2.80	1	1.91	0.88	1.28	0.87	-	1.31	0.44	0.16	1.24
BK32H	3.35	2.60	3.00	1	1.91	0.88	1.28	0.87	-	1.31	0.44	0.16	1.42
BK34H	3.55	2.80	3.20	1	1.91	0.88	1.28	0.87	-	1.31	0.44	0.16	1.61
BK36H	3.75	3.00	3.40	1	1.47	0.88	1.28	0.44	-	0.88	0.44	0.16	1.25
BK40H	3.95	3.20	3.60	1	1.47	0.88	1.28	0.44	-	0.88	0.44	0.16	1.47
BK45H	4.25	3.50	3.90	1	1.47	0.88	1.28	0.44	-	0.88	0.44	0.16	1.83
BK47H	4.45	3.70	4.10	1	1.47	0.88	1.28	0.44	-	0.88	0.44	0.16	2.08
BK50H	4.75	4.00	4.40	2	1.47	0.88	1.28	0.44	-	0.88	0.44	0.16	2.25
BK52H	4.95	4.20	4.60	2	1.47	0.88	1.28	0.44	-	0.88	0.44	0.16	2.56
BK55H	5.25	4.50	4.90	2	1.47	0.88	1.28	0.44	-	0.88	0.44	0.16	2.66
BK57H	5.45	4.70	5.10	2	1.47	0.88	1.28	0.44	-	0.88	0.44	0.16	3.06
BK60H	5.75	5.00	5.40	2	1.47	0.88	1.28	0.44	-	0.88	0.44	0.16	3.30
BK62H	5.95	5.20	5.60	2	1.47	0.88	1.28	0.44	-	0.88	0.44	0.16	3.41
BK65H	6.25	5.50	5.90	2	1.47	0.88	1.28	0.44	-	0.88	0.44	0.16	3.09
BK67H	6.45	5.70	6.10	2	1.47	0.88	1.28	0.44	-	0.88	0.44	0.16	3.90
BK70H	6.75	6.00	6.40	3	1.53	0.88	1.28	0.50	-	0.88	0.44	0.16	3.89
BK72H	6.95	6.20	6.60	3	1.53	0.88	1.28	0.50	0.06	0.88	0.44	0.16	4.00
BK75H	7.25	6.50	6.90	3	1.53	0.88	1.28	0.50	0.06	0.88	0.44	0.16	3.57
BK77H	7.45	6.70	7.10	3	1.53	0.88	1.28	0.50	0.06	0.88	0.44	0.16	4.48
BK80H	7.75	7.00	7.40	3	1.53	0.88	1.28	0.50	0.06	0.88	0.44	0.16	4.50
BK85H	8.25	7.50	7.90	3	1.53	0.88	1.28	0.50	0.06	0.88	0.44	0.16	4.87
BK90H	8.75	8.00	8.40	3	1.53	0.88	1.28	0.50	0.06	0.87	0.44	0.16	5.43
BK95H	9.25	8.50	8.90	3	1.53	0.88	1.28	0.50	0.06	0.88	0.44	0.16	5.83
BK100H	9.75	9.00	9.40	3	1.53	0.88	1.28	0.50	0.06	0.88	0.44	0.16	6.38
BK105H	10.25	9.50	9.90	3	1.53	0.88	1.28	0.50	0.06	0.88	0.44	0.16	6.68
BK110H	10.75	10.00	10.40	3	1.53	0.88	1.28	0.50	0.06	0.88	0.44	0.16	7.17
BK115H	11.25	10.50	10.90	3	1.53	0.88	1.28	0.50	0.06	0.88	0.44	0.16	7.01
BK120H	11.75	11.00	11.40	3	1.53	0.88	1.28	0.50	0.06	0.88	0.44	0.16	8.34
BK130H	12.75	12.00	12.40	3	1.53	0.88	1.28	0.50	0.06	0.88	0.44	0.16	7.99
BK140H	13.75	13.00	13.40	3	1.53	0.88	1.28	0.50	0.06	0.88	0.44	0.16	9.50
BK150H	14.75	14.00	14.40	3	1.53	0.88	1.28	0.50	0.06	0.88	0.44	0.16	10.35
BK160H	15.75	15.00	15.40	3	1.53	0.88	1.28	0.50	0.06	0.88	0.44	0.16	11.11
BK190H	18.75	18.00	18.40	3	1.53	0.88	1.28	0.50	0.06	0.88	0.44	0.16	14.45

**EASY TO MOUNT  
CLAMP FIT ON SHAFT  
EASY TO REMOVE**



Part Numbers are specified by "H" and bore size. Example: "H - 1 1/8"

\*These sizes are furnished with special keys to fit standard depth keyseats.

TABLE No. H BUSHING

BUSHING	L	U	T	D		H	V	W	X	Y	R	S	BORE RANGE		CAP SCREWS		AVG. WT. LBS.	WRENCH TORQUE IN-LBS	CAPSCREW HEAD PROJECTION
				LARGE END	SMALL END								No.	SIZE					
				TYPE 1	TYPE 2														
H	1 1/4	1/4	1	1.625	1.571	2 1/2	2	-	14/16	3/16	1/8	3/16	3/8 - 1 1/8	1 7/16 - 1 1/2	2	1/4-20 x 5/8	0.8	95	0.16