

Locking Devices

Power Interrupting Devices



- Three-piece thermoplastic clamp assembly with fast-lead stainless screws provides a more consistent durable grip
- Superior wire terminations are assured with box terminals and screws with pressure pads
- No “lazy” connections because a spring-loaded safety shutter automatically ejects the plug if it hasn’t been properly locked into the female device
- Insulated non-metallic housing enhances safety and resistance to impact
- Positive locking is ensured by the nose of the plug being keyed into a detent in female device

20A 125V AC or DC, 10A 250V DC, 480V AC, 2-Pole 3-Wire and 3-Pole 3-Wire Inches (mm)

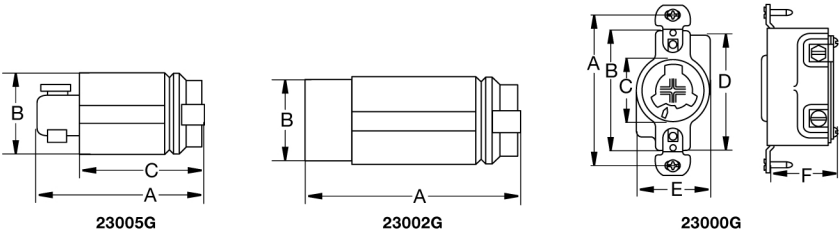


Rating	Poles/ Wires	Cord Diameter	Description	Clamp-Type Terminals		Single Receptacle, Back Wired
				Nylon Plug	Nylon Connector	
20A 125V AC or DC, 10A 250V DC, 480V AC, Grounding	2-Pole 3-Wire	.320"-.660" (8.1-16.8)	Black/White	23005G*	23002G*	—
			Black Phenolic	—	—	23000G*
20A 125V AC or DC, 10A 250V DC, 480V AC, Non-Grounding	3-Pole 3-Wire	.320"-.660" (8.1-16.8)	Black/White	23005	—	—

Note: *These devices are not UL Listed and are for replacement use only in existing installations.
See page G-27 for weather protective boots and accessories.

Product Dimensions Inches (mm)

	Plug	Connector	Single Receptacle
A	3.56" (90.4)	3.22" (81.8)	3.28" (83.3)
B	1.62" (41.4)	1.72" (43.7)	2.38" (60.5)
C	—	2.31" (58.7)	1.38" (35.1)
D	—	—	2.50" (63.5)
E	—	—	1.62" (41.4)
F	—	—	1.47" (37.3)



Locking Devices

30 Amp Power Interrupting Devices

30A 600V AC and 250V DC, 3-Pole 4-Wire and 4-Pole 5-Wire Grounding Inches (mm)

								
21415	21414	25415	25414	20418	21420	20403	25403	25250

Rating	Poles/ Wires	Cord Diameter	Description	Plug	Connector	Flanged Devices Cast Aluminum		Single Receptacle
						Male	Female	
30A 600V AC, 20A 250V DC	3-Pole 4-Wire	.700"-1.20" (17.8-30.5)	Black nylon with cord grip	21415	21414	—	—	—
			For F.S. and F.D. boxes	—	—	20418	—	20403
			Cast aluminum angle housing with ¾ in. NPT hub	—	—	21447	21420	—
30A 600V AC, 20A 250V DC	4-Pole 5-Wire	.700"-1.20" (17.8-30.5)	Black nylon with cord grip	25415	25414	—	—	—
			Metal housing for F.S. and F.D. boxes, Blue finish	—	—	—	—	25403
			Aluminum weather protective housing/cover for F.S. and F.D. boxes, Blue finish	—	—	—	—	25250

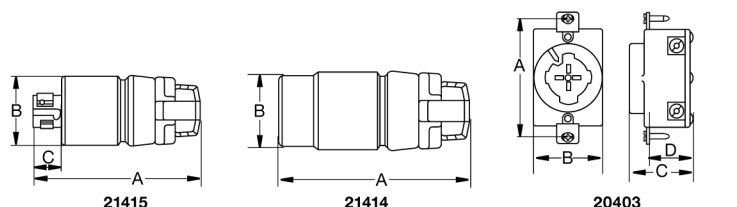
Plug Connector



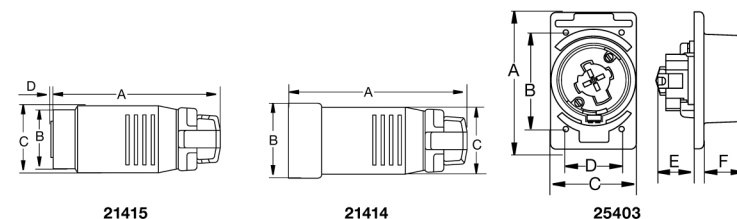
Note: See page G-27 for weather protective boots and accessories.

Product Dimensions Inches (mm)

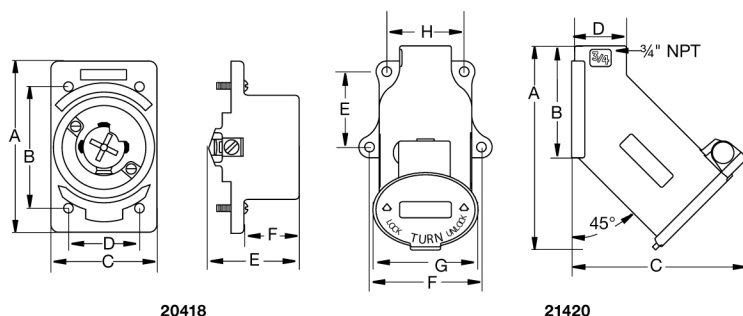
3-Pole 4-Wire Devices			
	Plug	Connector	Single Receptacle
A	5.62" (142.7)	6.00" (152.4)	3.28" (83.3)
B	2.33" (59.2)	2.44" (62.0)	1.94" (49.3)
C	0.94" (23.9)	—	1.75" (44.5)
D	—	—	1.22" (31.0)



4-Pole 5-Wire Devices			
	Plug	Connector	Single Receptacle
A	6.56" (166.6)	6.78" (172.2)	4.56" (115.8)
B	2.25" (57.2)	2.69" (68.3)	3.25" (82.6)
C	2.50" (63.5)	2.50" (63.5)	2.84" (72.1)
D	0.05" (1.3)	—	1.88" (47.8)
E	—	—	1.25" (31.8)
F	—	—	1.69" (42.9)



Flanged Inlets		
	Male	Angled Housing
A	4.56" (115.8)	5.94" (151.0)
B	3.25" (82.6)	3.25" (82.6)
C	2.84" (72.1)	5.09" (129.3)
D	1.88" (47.8)	1.50" (38.1)
E	2.41" (61.2)	2.19" (55.6)
F	1.81" (46.0)	3.25" (82.6)
G	—	3.06" (77.7)
H	—	2.25" (57.2)



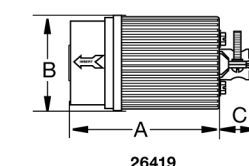
60A 600V AC, 3-Pole 4-Wire and 4-Pole 5-Wire Grounding Inches (mm)

	26419	26418	26519	26516	26422	26521	26410	26520	
Rating	Poles/ Wires	Cord Diameter	Description	Plug	Connector	Flanged Devices Cast Aluminum		Receptacle	
						Male	Female		
60A 600V AC, Grounding	3-Pole 4-Wire	.920"-1.450" (23.4-36.8)	Yellow polycarbonate outer cover and adjustable cord grip	26419	26418	—	—	—	
			Black phenolic with short aluminum housing and lift cover	—	—	—	—	26410	
			Steel housing	—	—	26422	26421	—	
60A 600V AC, Grounding	4-Pole 5-Wire	.920"-1.450" (23.4-36.8)	Blue polycarbonate outer cover and adjustable cord grip	26519	26516	—	—	—	
			Black phenolic with long aluminum housing and lift cover	—	—	—	—	26520	
			Steel housing	—	—	26522	26521	—	

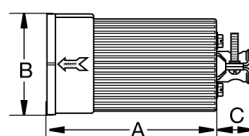
Note: See page G-27 for weather protective boots and accessories.

Product Dimensions Inches (mm)

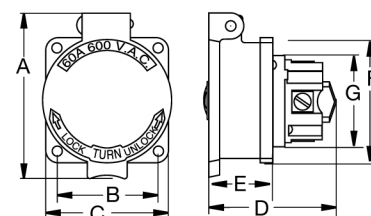
	Plug	Connector	Single Receptacle
A	3.56" (90.4)	5.43" (137.9)	4.62" (116.8)
B	3.03" (76.9)	3.18" (80.8)	2.87" (72.8)
C	1.09" (27.6)	1.09" (27.6)	3.50" (88.9)
D	—	—	3.57" (90.6)
E	—	—	1.84" (46.7)
F	—	—	3.26" (82.8)
G	—	—	2.56" (65.0)



26419

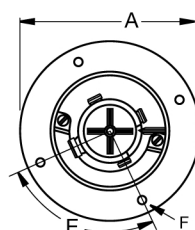


26418



26410

Flanged Inlets		
	Male	Female
A	4.12" (104.6)	4.12" (104.6)
B	2.70" (68.6)	2.88" (73.0)
C	1.20" (30.5)	1.20" (30.5)
D	2.75" (69.9)	3.33" (84.5)
E	90°	90°
F	0.19" (4.8)	0.19" (4.8)



26422

