

Compression Connections

BURNDY®

Copper Compression – Flex – Inspection Window

C-56

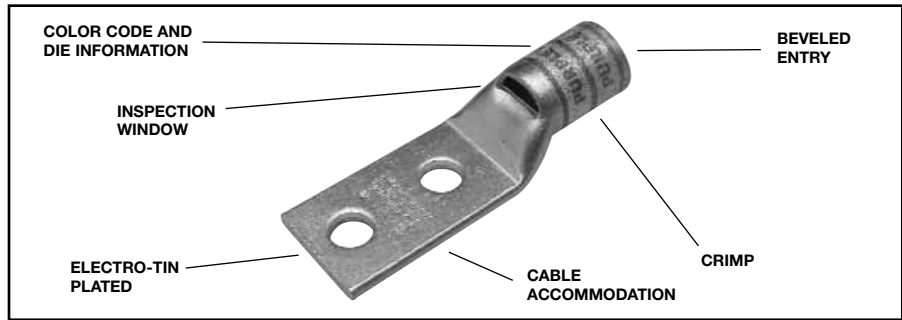
TWO HOLE HYLUG™ FLEX CONDUCTOR STANDARD BARREL

TYPES YA-L-2TC, YA-L-2TC-FX, YAV-L-2TC-FX

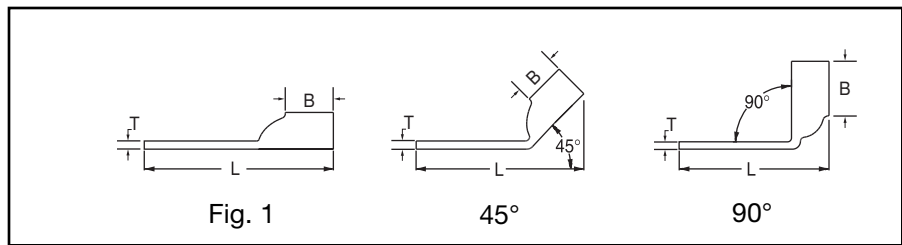
COPPER COMPRESSION TERMINAL

UL Listed 90° C, 600 Volts to 35 kV ◆

45° and 90° angles are available. Please contact Customer Service to order: 1-800-346-4175



◆ For applications greater than 2000 Volts consult cable manufacturer for voltage stress relief instructions.



Catalog Number	Fig #	Conductor		Stud Hole Size	Stud Hole Spacing	Tongue Width	Figure Dimensions			Dieless (# of crimps)	▲ Installation Tooling				Wire Strip Length	
		AWG	MM ²				(B)	(T)	(L)		Mechanical MD6, OUR840, MD7-34R	Hydraulic BCT500HS, Y500CTS	Y35, Y39, Y750, Y46*, PAT750	Color Code		Die Index
YA8C-L2TC10	1	37/24 #8 Weld #8 AWG	** 10	# 10	5/8"	.41"	.44"	.08"	1.84"	MRC840 (1) MY29-3 (1) MY29-11 (1) Y8MRB-1 (1) Y1MRTC (1) Y81KFT (1) Y81KFTMBH (1) PAT81KFT-18V (1)	W8CVT (1) W8CRT (1) X8CRT (1)	W8CVT (1) W8CRT (1) X8CRT (1)	U8CRT (1)	Red	49	7/16"
YA8C-L2TC14	1			1/4"	5/8"	.44"	.44"	.08"	1.95"							
YA8C-L2TC14E1	1			1/4"	1"	.44"	.44"	.08"	2.33"							
YA8C-L2TC14E2	1			1/4"	3/4"	.44"	.44"	.08"	2.08"							
YA8C-L2TC38	1			3/8"	1"	.58"	.44"	.06"	2.52"							
YAV6C-L2TC10-FX	1	61/24 #6 Weld #6 AWG	** 16	# 10	5/8"	.44"	.50"	.07"	1.94"	MRC840 (1) MY29-11 (1) Y1MRTC (1) Y81KFT (1) Y81KFTMBH (1) PAT81KFT-18V (1)	W5CVT (1) W5CRT (1) X5CRT (1)	W5CVT (1) W5CRT (1) X5CRT (1)	U5CRT (1)	Blue	7	1/2"
YAV6C-L2TC10E2-FX	1			# 10	3/4"	.48"	.50"	.08"	2.06"							
YAV6C-L2TC10E4-FX	1			# 10	11/16"	.44"	.50"	.07"	2.00"							
YAV6C-L2TC10E9-FX	1			# 10	1/2"	.48"	.50"	.08"	1.81"							
YAV6C-L2TC14-FX	1	61/24 #6 Weld #6 AWG	** 16	1/4"	5/8"	.48"	.50"	.08"	2.06"	MY29-11 (1) Y1MRTC (1) Y81KFT (1) Y81KFTMBH (1) PAT81KFT-18V (1)	W5CVT (1) W5CRT (1) X5CRT (1)	W5CVT (1) W5CRT (1) X5CRT (1)	U5CRT (1)	Blue	7	7/16"
YAV6C-L2TC14E2-FX	1			1/4"	3/4"	.48"	.50"	.08"	2.19"							
YAV6C-L2TC14E1-FX	1			1/4"	1"	.48"	.50"	.08"	2.44"							
YAV6C-L2TC516-FX	1			5/16"	1"	.52"	.50"	.07"	2.50"							
YAV6C-L2TC38-FX	1			3/8"	1"	.58"	.50"	.06"	2.62"							
YAV6C-L2NTC-FX	1			1/2"	1-3/4"	.83"	.50"	.12"	3.81"							
YAV4C-L2NT10-FX	1			91/24 105/24 #4 Weld #4 AWG	-	# 10	5/8"	.41"	.50"							
YAV4C-L2NT10E1-FX	1	# 10	1"			.41"	.50"	.09"	2.33"							
YAV4C-L2TC14-FX	1	1/4"	5/8"			.55"	.50"	.09"	2.08"							
YAV4C-L2TC14E2-FX	1	1/4"	3/4"			.55"	.50"	.09"	2.20"							
YAV4C-L2TC14E1-FX	1	1/4"	1"			.55"	.50"	.09"	2.45"							
YAV4C-L2TC516-FX	1	5/16"	1"			.55"	.50"	.09"	2.52"							
YAV4C-L2TC38-FX	1	3/8"	1"			.58"	.50"	.08"	2.68"							
YAV4C-L2NTC-FX	1	1/2"	1-3/4"			.83"	.50"	.12"	3.87"							

* Use PUADP-1 adaptor with U dies in Y46 HYPRESS™.
 ** The MM² conductor size referenced here is for both Class 2 and Class 5 conductor.
 *** The MM² conductor sizes listed are the recommendations for Class 5 conductor.

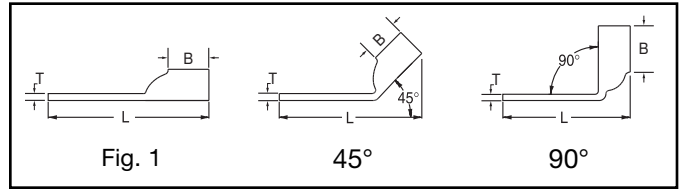
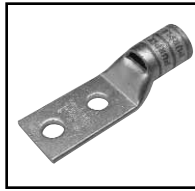
▲ See tooling section of this catalog for complete tool and die listings. Use ONLY color-coded die recommendations for -FX connectors. For nest/indenter system contact factory.

◆ For applications greater than 2000 Volts consult cable manufacturer for voltage stress relief instructions.
Note: All dimensions shown are for reference only.

Blue highlighted items are industry standard and most frequently ordered.

**TWO HOLE HYLUG™
FLEX CONDUCTOR
STANDARD BARREL**
(Continued)

UL Listed 90° C,
600 Volts to 35 kV ◆



45° and 90° angles are available.
Please contact Customer Service to order:
1-800-346-4175



Catalog Number	Fig #	Conductor		Stud Hole Size	Stud Hole Spacing	Tongue Width	Figure Dimensions			Dieless (# of crimps)	▲ Installation Tooling					Wire Strip Length	
		AWG	MM²				(B)	(T)	(L)		Mechanical MD6, OUR840, MD7-34R	Hydraulic		Color Code	Die Index		
												BCT500HS, Y500GTHS	Y35, Y39, Y750, Y46*, PAT750				
YAV2C-L2TC14-FX	1	125/24 150/24 #2 Weld #2 AWG	35	1/4"	5/8"	.68"	.63"	.10"	2.26"	MY29-11 (1) Y1MRTC (2) Y81KFT (1) Y81KFTMBH (1) PAT81KFT-18V (1)	W2CVT (1) W2CRT (1) X2CRT (1)	W2CVT (1) W2CRT (1) X2CRT (1)	U2CRT (1)	Brown	10	11/16"	
YAV2C-L2TC14E2-FX	1			1/4"	3/4"	.68"	.63"	.10"	2.38"								
YAV2C-L2TC14E1-FX	1			1/4"	1"	.68"	.63"	.10"	2.63"								
YAV2C-L2TC516-FX	1			5/16"	1"	.68"	.63"	.10"	2.71"								
YAV2C-L2TC38-FX	1			3/8"	1"	.68"	.63"	.10"	2.82"								
YAV2C-L2NTC-FX	1	1/2"	1-3/4"	.83"	.63"	.08"	4.07"										
YAV1C-L2TC14-FX	1	175/24 225/24 #1 Weld #1 AWG	—	1/4"	5/8"	.75"	.69"	.12"	2.35"	MY29-11 (1) Y81KFT (1) Y81KFTMBH (1) PAT81KFT-18V (1)	W1CVT (1) W1CRT-1 (1) X1CRT-1 (1)	W1CVT (1) W1CRT-1 (1) X1CRT-1 (1)	U1CRT-1 (1)	Green	11	11/16"	
YAV1C-L2TC14E1-FX	1			1/4"	1"	.75"	.69"	.12"	2.71"								
YAV1C-L2TC14E2-FX	1			1/4"	3/4"	.75"	.69"	.12"	2.47"								
YAV1C-L2TC516-FX	1			5/16"	1"	.75"	.69"	.12"	2.79"								
YAV1C-L2TC38-FX	1			3/8"	1"	.75"	.69"	.12"	2.91"								
YAV1C-L2NTC-FX	1	1/2"	1-3/4"	.83"	.69"	.11"	4.10"										
YAV25-L2TC14-FX	1	275/24 1/0 Weld 1/0 AWG	50	1/4"	5/8"	.83"	.69"	.12"	2.39"	MY29-11 (1) Y81KFT (1) Y81KFTMBH (1) PAT81KFT-18V (1)	W25VT (2) W25RT (2) X25RT (2)	W25VT (2) W25RT (2) X25RT (2)	U25RT (1)	Pink	12	11/16"	
YAV25-L2TC14E2-FX	1			1/4"	3/4"	.83"	.69"	.12"	2.51"								
YAV25-L2TC516E2-FX	1			5/16"	3/4"	.83"	.69"	.12"	2.57"								
YAV25-L2TC516-FX	1			5/16"	1"	.83"	.69"	.12"	2.82"								
YAV25-L2TC38-FX	1			3/8"	1"	.83"	.69"	.12"	2.95"								
YAV25-L2TC12E1-FX	1	1/2"	1"	.83"	.69"	.12"	3.20"										
YAV25-L2NTC-FX	1	275/24 1/0 AWG 1/0 Weld	50	1/2"	1-3/4"	.83"	.69"	.12"	4.14"		W25VT (2)	W25VT (2)	U25RT (1)	Pink	12	11/16"	
YAV26-L2TC14-FX	1	325/24 2/0 Weld 2/0 AWG	70	1/4"	5/8"	.93"	.81"	.13"	2.56"	MY29-11 (1) Y644HS (1) Y81KFT (1) Y81KFTMBH (1) PAT81KFT-18V (1)	W26VT (2) W26RT (2) X26RT (2)	W26VT (2) W26RT (2) X26RT (2)	U26RT (1)	Black	13	13/16"	
YAV26-L2TC14E2-FX	1			1/4"	3/4"	.93"	.81"	.13"	2.68"								
YAV26-L2TC516-FX	1			5/16"	1"	.93"	.81"	.13"	2.99"								
YAV26-L2TC38-FX	1			3/8"	1"	.93"	.81"	.13"	3.12"								
YAV26-L2TC12E1-FX	1			1/2"	1"	.93"	.81"	.13"	3.37"								
YAV26-L2NTC-FX	1	1/2"	1-3/4"	.93"	.81"	.13"	4.31"										
YAV27-L2TC14-FX	1	450/24 3/0 Weld 3/0 AWG	95	1/4"	5/8"	1.03"	1.00"	.14"	2.83"	MY29-11 (1) Y644HS (1) Y81KFT (1) Y81KFTMBH (1) PAT81KFT-18V (1)	W27VT (2) W27RT (2) X27RT (3)	W27VT (2) W27RT (2) X27RT (3)	U27RT (1)	Orange	14	1"	
YAV27-L2TC38-FX	1			3/8"	1"	1.03"	1.00"	.14"	3.35"								
YAV27-L2TC-FX	1			1/2"	1-3/4"	1.03"	1.00"	.14"	4.54"								
YAV28-L2TC14E2-FX	1	550/24 4/0 Weld 4/0 AWG	120	**	1/4"	3/4"	1.12"	1.03"	.15"	2.91"	MY29-11 (1) Y644HS (1) Y81KFT (1) Y81KFTMBH (1) PAT81KFT-18V (1)	W28VT (2) W28RT (2) X28RT (3)	W28VT (2) W28RT (2) X28RT (3)	U28RT (1)	Purple	15	1-1/16"
YAV28-L2TC14-FX	1			1/4"	5/8"	1.12"	1.03"	.15"	2.86"								
YAV28-L2TC516-FX	1			5/16"	1"	1.12"	1.03"	.15"	3.30"								
YAV28-L2TC38-FX	1			3/8"	1"	1.12"	1.03"	.15"	3.43"								
YAV28-L2NTC-FX	1			1/2"	1-3/4"	1.20"	1.03"	.15"	4.18"								
YAV28-L2TC14E2	1			1/4"	3/4"	1.14"	1.03"	.15"	2.99"								
YAV28-L2NT38-FX	1			3/8"	1"	.94"	1.03"	.15"	3.44"								
YAV28-LTC12E1-FX	1			1/2"	1"	1.14"	1.03"	.15"	3.68"								
YAV28-L2TC12-FX	1			1/2"	1-1/4"	1.14"	1.03"	.15"	3.93"								
YAV28-L2NTC-FX	1			1/2"	1-3/4"	1.14"	1.03"	.15"	4.62"								

* Use PUADP-1 adaptor with U dies in Y46 HYPRESS™.
** The 16 MM² referenced here is for both Class 2 and Class 5 conductor.
*** The MM² conductor sizes listed are the recommendations for Class 5 conductor.

▲ See tooling section of this catalog for complete tool and die listings. Use ONLY color-coded die recommendations for -FX connectors. For nest/indenter system contact factory.

◆ For applications greater than 2000 Volts consult cable manufacturer for voltage stress relief instructions.
Note: All dimensions shown are for reference only.

Blue highlighted items are industry standard and most frequently ordered.

Compression Connections

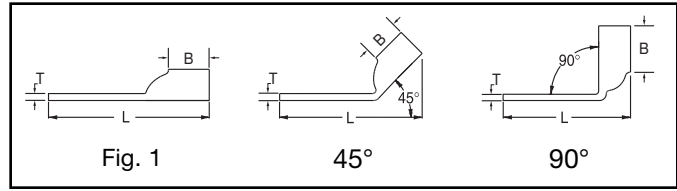
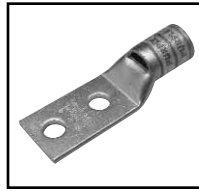
BURNDY®

Copper Compression – Flex – Inspection Window

C-58

TWO HOLE HYLUG™ FLEX CONDUCTOR STANDARD BARREL (Continued)

UL Listed 90° C,
600 Volts to 35 kV ◆



45° and 90° angles are available.
Please contact Customer Service to order:
1-800-346-4175



Catalog Number	Fig #	Conductor		Stud Hole Size	Stud Hole Spacing	Tongue Width	Figure Dimensions			Dieless (# of crimps)	▲ Installation Tooling					Wire Strip Length	
		AWG	*** MM ²				(B)	(T)	(L)		Mechanical		Hydraulic		Color Code		Die Index
											MD6, OUR840, MD7-34R	BCT500HS, Y500CTS	Y35, Y39, Y750, Y46*, PAT750				
YAV29-L2TC14E2-FX	1	550/24 4/0 Weld	—	1/4"	3/4"	1.12"	1.03"	.16"	2.91"	W29VT (2) X29RT (4)	W29VT (2) W29RT (2) X29RT (4)	U29RT (1)	Yellow	16	1-1/16"		
YAV29-L2TC14-FX	1			1/4"	5/8"	1.12"	1.03"	.16"	2.86"								
YAV29-L2TC516-FX	1			5/16"	1"	1.12"	1.03"	.16"	3.30"								
YAV29-L2TC38-FX	1			3/8"	1"	1.12"	1.03"	.16"	3.43"								
YAV29-L2NTC-FX	1			1/2"	1-3/4"	1.20"	1.03"	.16"	4.18"								
YAV29-L2NT38-FX	1			3/8"	1"	.94"	1.03"	.16"	3.44"								
YAV29-LTC12E1-FX	1			1/2"	1"	1.14"	1.03"	.16"	3.68"								
YAV29-L2TC12-FX	1			1/2"	1-1/4"	1.14"	1.03"	.16"	3.93"								
YA30-L2TC38-FX	1			250 Flex CLASS G 259 Str. CLASS H 427 Str.	—	3/8"	1"	1.20"	1.03"							.16"	3.45"
YA30-L2TC12-FX	1	1/2"	1-1/4"			1.20"	1.03"	.16"	3.95"								
YA30-L2NTC-FX	1	1/2"	1-3/4"			1.20"	1.03"	.16"	4.63"								
YA31-L2TC38-FX	1	250 Flex 637/24 CLASS I, K, M	150	3/8"	1"	1.29"	1.06"	.18"	3.51"	W31VT (2)	W31VT (2) W31RT (2)	U31RT (2)	Red	18	1-1/4"		
YA31-L2TC12-FX	1			1/2"	1-1/4"	1.29"	1.06"	.18"	4.01"								
YA31-L2NTC-FX	1			1/2"	1-3/4"	1.29"	1.06"	.18"	4.70"								
YA31-L2NTC38-FX	1			3/8"	1-3/4"	1.29"	1.06"	.18"	4.26"								
YA32-L2TC38-FX	1	775/24 313.1 kcmil	185	3/8"	1"	1.38"	1.19"	.19"	3.69"	W32VT (2)	W32VT (2) W32RT (2)	U32RT (2)	Blue	19	1-5/16"		
YA32-L2NTC-FX	1			1/2"	1-3/4"	1.38"	1.19"	.19"	4.88"								
YA34-L2TC38-FX	1	373.7 kcmil 925/24 (360 kcmil Nom.)	240	3/8"	1"	1.52"	1.27"	.23"	3.88"	—	—	U34RT (2)	Brown	20	1-7/16"		
YA34-L2TC12-FX	1			1/2"	1-1/4"	1.52"	1.27"	.23"	4.38"								
YA34-L2NTC-FX	1			1/2"	1-3/4"	1.52"	1.27"	.23"	5.06"								
YA34-L2TC516-FX	1			5/16"	1"	1.55"	1.27"	.23"	3.75"								
YA34-L2NT38-FX	1			3/8"	1"	.96"	1.27"	.23"	3.88"								
YA34-L2NTC38-FX	1	3/8"	1-3/4"	1.55"	1.27"	.23"	4.63"										
YA36-L2TC38-FX	1	1100/24	—	3/8"	1"	1.72"	1.38"	.27"	4.24"	—	—	U38RT (2)	Purple	23	1-3/8"		
YA36-L2NTC-FX	1	444.4 kcmil	—	1/2"	1-3/4"	1.72"	1.38"	.27"	5.24"								
YA38-L2TC38-FX	1	535.3 kcmil 1325/24 (500 kcmil nom.)	300	3/8"	1"	1.81"	1.45"	.27"	4.35"	—	—	U38XRT (2)	Pink	L99	1-7/16"		
YA38-L2TC12-FX	1			1/2"	1-1/4"	1.81"	1.45"	.27"	4.67"								
YA38-L2NTC-FX	1			1/2"	1-3/4"	1.81"	1.45"	.27"	5.35"								
YA38-L2TC516-FX	1	535.3 kcmil 1325/24 (500 kcmil nom.)	300	5/16"	1"	1.84"	1.45"	.27"	4.04"	—	—	U39RT (2)	Black	24	1-5/16"		
YA38-L2NT38-FX	1			3/8"	1"	1.63"	1.45"	.27"	4.35"								
YA38-L2NNT-FX	1			1/2"	1-3/4"	1.63"	1.45"	.27"	5.35"								
YA39-L2NTC-FX	1	600 kcmil	—	1/2"	1-3/4"	1.91"	1.42"	.27"	5.36"	—	—	U44XRT (2)	Yellow	L115	1-5/8"		
YA40-L2NTC-FX	1	646 kcmil 1600/24	400	1/2"	1-3/4"	1.95"	1.42"	.30"	5.38"								
YA40-L2TC38-FX	1			3/8"	1"	1.98"	1.42"	.30"	4.28"								
YA40-L2NNT-FX	1			1/2"	1-3/4"	1.63"	1.42"	.30"	5.38"								
YA44-L2TC38-FX	1	777.7 kcmil 1925/24 (750 kcmil nom.)	500	3/8"	1"	2.19"	1.65"	.33"	4.74"	Y644HS (1) Y81KFT (2) Y81KFTMBH (2) PAT81KFT-18V (2)	—	—	—	—	—		
YA44-L2NTC-FX	1			1/2"	1-3/4"	2.19"	1.65"	.33"	5.74"								
YA44-L2TC58-FX	1			5/8"	1-1/2"	2.19"	1.65"	.33"	5.55"								
YA44-L2TC12-FX	1			1/2"	1-1/4"	2.19"	1.65"	.33"	5.05"								
YA44-L2TC12E3-FX	1			1/2"	1-1/2"	2.19"	1.65"	.33"	5.30"								
YA44-L2NT38-FX	1			3/8"	1"	1.63"	1.65"	.33"	4.74"								
YA44-L2NNT-FX	1			1/2"	1-3/4"	1.63"	1.65"	.33"	5.74"								

* Use PUADP-1 adaptor with U dies in Y46 HYPRESS™.
*** The MM² conductor sizes listed are the recommendations for Class 5 conductor.

▲ See tooling section of this catalog for complete tool and die listings. Use ONLY color-coded die recommendations for -FX connectors. For nest/indentor system contact factory.

◆ For applications greater than 2000 Volts consult cable manufacturer for voltage stress relief instructions.
Note: All dimensions shown are for reference only.

Blue highlighted items are industry standard and most frequently ordered.