

Table of Contents

Installation Tools Introduction..... N-4
 Tool Center..... N-4
 Limited Warranty..... N-4
 Repair Policy..... N-4
 Return Procedure..... N-4

Important Notes..... N-5
 Battery Tool Accessories..... N-5

T3 Technology Battery Crimpers
 PAT750T3, 12 Ton, C-Head, T3 Technology..... N-7

Battery Crimpers
 PAT46LWS, 15 Ton, C-Head..... N-8
 PAT46LW, 15 Ton, Latch Head..... N-9
 PAT750, 12 Ton, C-Head..... N-10
 PAT444S, 11 Ton, C-Head, Dieless..... N-11
 PAT644, 11 Ton, Latch Head, Dieless..... N-12
 PAT81KFT, 6 Ton, Latch Head, Dieless..... N-13
 PAT4PC834, 6 Ton, C-Head, Dieless..... N-14
 PAT600, 6 Ton, Latch Head..... N-15
 PAT500SJ, 6 Ton, Pistol Style, Scissor Action..... N-16
 PATMD-LW, 6 Ton, IN-LINE®, Scissor Action..... N-17

Hand Operated Crimpers
 Y750HSXT, 12 Ton, C-Head..... N-18
 Y35, 12 Ton, C-Head..... N-19
 Y644HSXT, 11 Ton, Latch Head, Dieless..... N-20
 Y81KFT, 6 Ton, Latch Head, Dieless..... N-21
 Y4PC834, 6 Ton, C-Head, Dieless..... N-22
 Y500CTHS, 6 Ton, Latch Head..... N-23

Remote Operated Crimpers
 Y60LW, 60 Ton, Latch Head..... N-24
 Y46LWSBH, 15 Ton, C-Head..... N-25
 Y46LWBH, 15 Ton, Latch Head..... N-26
 Y45, 15 Ton, C-Head..... N-27
 Y750BHXT, 12 Ton, C-Head..... N-28
 Y35BH, 12 Ton, C-Head..... N-29
 Y444SBH, 11 Ton, C-Head, Dieless..... N-30
 Y81KFTMBH, 6 Ton, Latch Head, Dieless..... N-31
 Y4PC834MBH, 6 Ton, C-Head, Dieless..... N-32
 Y34BH, 9 Ton, C-Head..... N-33
 Y29BH, 4.5 Ton, C-Head..... N-34

Plier Hand Tools
 Y10D, Nylon/Bare, #22-10 AWG..... N-35
 Y1022, Nylon/Vinyl/Bare, #22-10 AWG..... N-35



Battery Crimpers



Hand Operated Crimpers



Remote Powered Crimpers



Plier Hand Tools



Ferrule Installation Tools

Table of Contents

Ferrule Installation Tools

YF2210FL, Front Load, Dieless, Insulated/Bare #22-10 AWG.....	N-36
YFTOOL Series, Ratchet, from #32 AWG to 250 kcmil	N-37

Mechanical Tools

Y8MRB1, Hand-held Ratchet, #22-8 AWG	N-38
MR8, Fully Protected Ratchet Mechanism for Critical Applications.....	N-39
MRE1022 Series, Ratchet, #22-10 AWG, Nylon/Vinyl and Bare.....	N-40
MR Series, Ratchet, #22-10 AWG, Nylon, Vinyl, Bare.....	N-41
MR4, Ratchet, #9-4 AWG, Bare.....	N-42
Y1MRTC, Rotating Die, Ratchet, #8-1 AWG Copper / #14-4 Thin Wall C-Taps.....	N-43
Y122CMR, Ratchet, #12-2 Stranded, Solid, Flex.....	N-44
Y122CMRKIT, Ratchet Tool with select long barrel connectors.....	N-45
Y122CMRCKIT, Ratchet Tool with select standard barrel connectors.....	N-45
M8ND, #26-8 AWG.....	N-46
MRC840 Series, #8-4/0 AWG.....	N-47
MY28 and MY29 Series, Dieless, #8 Str.-250 kcmil CU; #8-4/0 Str. AL.....	N-48
OH25, Dieless Ratchet, #10-1/0 Str.....	N-49
OUR840, Ratchet, Overhead/Underground Applications.....	N-50
MD6 Series, #14 AWG-500 kcmil.....	N-51
MD7 Series, #14 AWG-500 kcmil.....	N-52
MD7 Ratchet Series.....	N-53

Pneumatic Press

OEM840NCP, #8-4/0 AWG	N-54
OEM175TFM, #22-10 AWG	N-55

60 Ton HPS/Fargo-Equivalent Dies

CD Index, Circumferential Profile.....	N-57
SH and AH Index, Hexagonal Profile.....	N-61

12 Ton U Dies

For 35 and 750 Tool Series; 46 Series with PUADP1 Adapter.....	N-63
12 Ton U Die Kits; Copper, Aluminum, Copper Wide, HYGROUND®.....	N-64
UM-Style, For OEM840NCP up to 4/0, 35 and 750 Series; 46 Series with PUADP1 Adapter.....	N-65

W Dies

For MD/PATMD, 500, and 600 Series.....	N-66
W Die Kits; Copper, Aluminum.....	N-67

Battery Cutters

PATCUT4, 11 Ton, Scissor Action.....	N-68
PATCUT2156, 10 Ton, Latch Head.....	N-69
PATCUT129, 7 Ton, Latch Head.....	N-70
PATCUT245, 6 Ton, Latch Head.....	N-71
PAT500SJ CUT, 6 Ton, Scissor Action.....	N-72
PATMDCUTLW, 6 Ton, Scissor Action.....	N-73
PATMD-LW ACSR Kits, 6 Ton, Scissor Action.....	N-74
PATMD-LW CU/AL Kits, 6 Ton, Scissor Action.....	N-75
PATMD-LW GUY Kits, 6 Ton, Scissor Action.....	N-76
PATCUT954HS, 7.7 Ton, C-Head, Long Reach, Live Line, Hot Stick.....	N-77
PATMDCUT82ALLIF, 6 Ton, Scissor Action, Long Reach, Live Line, Hot Stick, Angled Head.....	N-78
PATCUT1500, Copper/Aluminum Cable Cutter.....	N-79

Hand-Operated Cutters

Y CUT129ACSR, Latch Head.....	N-80
-------------------------------	------



Mechanical Installation Tools



Die Sets



Battery Cutters

Table of Contents

Remote Operated Cutters
 RHCC4QUAL, Scissor Action..... N-81
 RHCC2156ACSR, Latch Head..... N-82
 RHCC129ACSR, Latch Head..... N-83
 RHCC245QUAL, Latch Head..... N-84

Plier Hand Tools
 Y101300C, Cuts Cable Ties & Wire..... N-85
 Y101400SC, Strips & Cuts Wire..... N-85

Manual Cable Cutters
 MCC Series, Copper/Aluminum Cable Cutters..... N-86
 RCC Cu/Al Series, Ratchet Cable Cutters..... N-87
 RCC Cu/Al/ACSR Series, Ratchet Cable Cutters..... N-88
 RWRC Series, Ratchet Wire Rope Cutters..... N-89

Electric Pumps
 Y10AC9, Electric, 10,000 PSI, Light Weight..... N-90
 EPP10, Electric, 10,000 PSI, Light Weight..... N-91
 EP10, Electric, 10,000 PSI, Dual Voltage/Hertz..... N-92
 EPAC10, Electric, 10,000 PSI, Large 8 Quart Reservoir, Roll Cage..... N-93

Manual Pumps
 HP10, Manual, Hand, 10,000 PSI..... N-94
 FP10, Manual, Foot, 10,000 PSI..... N-94
 FP6, Manual, Foot, 6,000 PSI..... N-94

Gas Pumps
 GP10, Gasoline, 10,000 PSI, 4 Horse Power Engine..... N-95

Non-Conductive Hydraulic Hoses, 10,000 and 6,000 PSI..... N-96

Conductive Hydraulic Hoses, 10,000 and 8,800 PSI..... N-97

Pump/Hose Accessories..... N-98

MD6/MD7 Related Accessories..... N-99

12 and 15 Ton Related Accessories..... N-101

Force Test Gauges..... N-102

WIREMIKE™ Wire Micrometers..... N-103

BTW Series Micro-Adjustable Professional Grade Torque Wrenches..... N-104

WEJTAP™ Tooling and Accessories..... N-105

DOMINATOR Auger Bits for Treated Wood..... N-108

Hydraulic Impact Wrenches
 HIW-ENF Variable Torque, 7/16" Quick Chuck..... N-109
 HIW-MAG Machined Aluminum Gerotor Design..... N-110

Low Pressure Hydraulic Crimper
 KOMPRESSOR™ 12 Ton Remote Operation..... N-111

Low Pressure Hydraulic Pole Saws
 HPS-LWMAG, Light Weight..... N-112

Low Pressure Hydraulic Tool Accessories..... N-113



Remote Cutter



Electric Pump



Force Test Gauge



Wire Micrometer



WEJTAP™ Tooling and Boosters



Hydraulic Impact Wrench

Installation Tools

The BURNDY® Engineered System features the most complete line of installation tools in the electrical industry. Available in various styles: battery actuated, mechanical, full cycle ratchet, self contained hydraulic, remote controlled hydraulic, along with power actuated pumps, hoses and accessories. BURNDY has the options to suit your needs. BURNDY tools are designed to integrate with the complete line of BURNDY connectors. Whether you are a small contractor working with #22 wire or a large utility working with 2500 kcmil conductor, there is a BURNDY tool available to do the job.

The benefits of the BURNDY® Engineered System are many, the most significant benefit being reliability. There is nothing more important to the electrical industry today than reliability. It represents the one area that leads to economical installations that will endure for the life of the installation.

Tool Center

An important element of the BURNDY® Engineered System is the BURNDY Tool Center, located at 150 Burndy Road, Littleton, NH 03561, (800-426-8720 or 603-621-4499). This center provides advice and information on the operation, maintenance and repair of BURNDY tools. The repair center is staffed with specialized technicians who provide the best possible service for all BURNDY tools, pumps and accessories.

BURNDY designed and produced the first self contained hydraulic compression electrical connector installation tool in 1934. In our continuing efforts to provide the highest quality and highest value connection systems, we offer the current BURNDY tool policy.

Limited Warranty

The majority of BURNDY tools are warranted to be free of defects in materials and workmanship for a period of five (5) years from the date of shipment. See specific tool page for length of warranty. If inspection by a certified technician shows the trouble is caused by defective workmanship or material, BURNDY will repair or (at our option) replace the tool.

This Warranty does not apply where:

- Repairs or alterations have been made or attempted by others
- Repairs are required because of normal wear and tear
- The tool has been abused, misused or improperly maintained
- The use of any non-BURNDY product has resulted in damage to the tool

Return Procedure

All tools sent to the BURNDY Tool Center (1-800-426-8720) or an authorized repair center must be accompanied by a purchase order with detailed bill to and ship to address authorizing repair. Requests for repair charges before work is done must be stated on the purchase order. All tools sent to the BURNDY Tool Center or an authorized repair center as a warranty claim must be accompanied by a proof of purchase such as a BURNDY invoice or invoice from any BURNDY distributor.

All tools must be shipped at the owner's expense, prepaid. BURNDY pays for the return freight, same surface freight as received. Airfreight returns will be returned same way collect for non-warranty repair and prepaid for warranty repairs.

This warranty and repair policy supercedes all previous policies and is in effect as of January 1, 2010.

Repair Policy

All non-warranty repaired tools are completely reconditioned and receive a limited 1-year warranty. Non-warranty repair returns tools to like-new condition at a maximum cost of 40% of a new tool. A nominal service charge of \$5 is applied to all repairs to cover shop supplies, oil disposal and other miscellaneous services not covered as part of the standard repair.

If the decision is made not to repair, a handling charge of \$25.00 will be applied plus return freight costs.

IMPORTANT NOTES:

Unless noted, product is not recommended for use on energized lines.

Notes for battery operated crimpers and cutters:

It is recommended that battery be removed when changing jaws, changing dies or storing tool in case.

Select battery operated tools are available in alternate versions :

- Nickel Metal Hydride
- AC
- DC
- 250 Volt

Contact Customer Service for further information:

US: 1-800-346-4175

Canada: 1-800-387-6487

International: 1-603-647-5299

Battery Tool Accessories:

BAT18VLI: 3.0Ah Li-Ion battery
BAT18V5AHLI: 5.0Ah Li-Ion battery
PATCHGRLI: 120V-AC Charger
PATCHGRLIDC: 12/24V-DC Charger

PT208620: Lanyard
PT10074020: Wrist Strap for PATMDLW

W28K (6-ton): Cutter die, 4-4/0 CU/AL, ACSR
WDA8300 (6-ton): Range taking die, 4-500 CU Str. and #2-4/0 CU Flex

WDC4500 (6 ton): Range taking die, #8-300 AL, #6-400 CU Str, and #2-4/0 CU Flex

P15K (15-ton): Cutter die, max. diameter 1.2"
PUADP1 (15-ton): U-die Adapter

PATCASELI: Polymer Carry Case
PATPROBAG: Nylon Pro Bag
TOOLBAGMDLI: Vinyl Utility Bag (for IN-LINE® tool)



PATRIOT® SERIES with EP★ ENHANCED POWER

BURNDY® PATRIOT® Tools are designed to accept an expanded range of Makita 18V Lithium-Ion Batteries, identified by Makita Star Power. Multi-Ah Capability provides the user with more choices and flexibility than ever before. Accepts large capacity 6Ah to smaller capacity 2Ah batteries.

More **POWER**, More **FLEXIBILITY**, More **PRODUCTIVITY**

PLEASE NOTE:

Prior models, tools **WITHOUT** the EP Enhanced Power mark, will only accept Makita 18V **3.0Ah** batteries.

Do not force any other size battery into the tool.
Damage caused by doing so will void the warranty.

INTRODUCING THE NEW PATRIOT®



TRACK | TRACE | TRANSMIT

T3 TECHNOLOGY WITH ONBOARD GPS

Record when and where crimps occur, unassisted by external devices.

- Onboard GPS maps crimp locations
- Bluetooth® enabled for instant crimp data
- Remotely observe project status
- Output force validation, green/red LED
- Flag & enter comments for individual crimps
- Manage BURNDY® T3 tool inventory
- Link accounts and securely share tools
- Sync and upload data to the cloud
- Create custom reports for projects

All of the exceptional features of its PATRIOT predecessor, plus a new ergonomic design and state of the art technology.



TRACK:
Map location of crimps



TRACE: Flag individual crimps with comments



TRANSMIT:
Sync data to the cloud

**PATRIOT® 12 Ton with T3 Technology
TRACK TRACE TRANSMIT**

Tool Series: PAT750T3

- **TRACK** crimp locations with onboard GPS - **BURNDY Exclusive!**
- **TRACE** individual crimps with comments and output force validation
- **TRANSMIT** via Bluetooth® technology and sync data to the cloud
- C-head with 1.65" jaw opening and 355° head rotation
- Used with U dies
- Patented T-Track alignment guide for HYGROUND® as well as other asymmetrical connectors
- Bright LED Worklight and Red/Green LED to validate output force
- Improved ergonomic design with more balance and better grip to reduce user fatigue

For Use On:

Tension Sleeves

Copper	#8 sol. - 500 kcmil
Aluminum	#8 sol. - 587.2 kcmil
ACSR	#4 - 556.5 kcmil

Taps

Copper	#14 sol. - 500 kcmil
Aluminum	#8 - 500 kcmil

Aerial Cable

Copper	#6 - 500 kcmil
--------	----------------

Terminals & Splices

Copper	#8 - 750 kcmil
Aluminum	#8 - 750 kcmil
ACSR	#4 - 556.5 kcmil

HYGROUND® (Compression Grounding)

Copper	#8 - 500 kcmil
Ground Rods	1/2" - 1" diameter



Specifications:

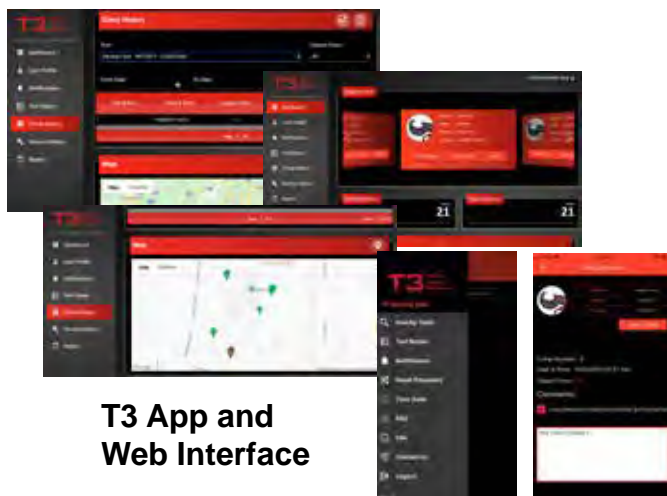
Output Force:	12 Tons
Tool Weight:	16.1 lbs
Size:	15.75" x 14.75" x 3.25"
Die Style:	U style
Jaw Opening:	1.65"
Operating Voltage:	18 V-DC Lithium-Ion (Accepts 2.0Ah-6.0Ah Makita)
Recharge Time:	30 minutes (3.0Ah) 45 minutes (5.0Ah)
Warranty:	5 year limited warranty Lifetime warranty on INFINITY DRIVE® 3 year on batteries and charger
Kits Include:	2 batteries, charger, lanyard, and carrying case

Accessories:

BAT18VLI:	3.0Ah Li-Ion battery
BAT18V5AHLI:	5.0Ah Li-Ion battery
PATCHGRLI:	120V-AC Charger
PATCHGRLIDC:	12/24V-DC Charger
PT208620:	Lanyard
FORCEGAUGE1215:	Force Test Gauge

Models:

PAT750T3U03A2	with 3.0Ah Li-Ion batteries, hard case
PAT750T3C03A2	with rubber covered head (3.0Ah), hard case
PAT750T3U05A2	with 5.0Ah Li-Ion batteries, hard case
PAT750T3C05A2	with rubber covered head (5.0Ah), hard case
PAT750T3U03A3	with 3.0Ah Li-Ion batteries, pro bag
PAT750T3C03A3	with rubber covered head (3.0Ah), pro bag
PAT750T3U05A3	with 5.0Ah Li-Ion batteries, pro bag
PAT750T3C05A3	with rubber covered head (5.0Ah), pro bag



**T3 App and
Web Interface**

PATRIOT® 15 Ton, C-Head

Hydraulic Self-Contained, 18V Lithium-Ion

Tool Series: PAT46LWS

- 2" jaw opening
- Used with P dies; U dies with PUADP1 adapter (sold separately)
- Light weight, scoop style C-head with 355° head rotation
- Overmolded, ergonomic handle
- Improved ergonomic balance
- Includes 2 batteries, charger, and carrying case
- **EP Enhanced Power** — tools accept 2.0, 3.0, 4.0, 5.0, and 6.0Ah Makita batteries

For Use On:

Copper - #8 AWG Str. - 1500 kcmil

Code Cable, Navy Cable, Flexible, Extra Flexible
1/2" - 1" Ground Rods

Terminals, grounding:

to 500 kcmil; YGA, YGHA, YGF

Terminals, uninsulated:

#8 - 1500 kcmil; YA, YA-2N, YA-L, YA-LB, YA-TC, YA-2LN,
YAB-4N, YAV-L, YAV-RS, YA-TC-FX

Terminals, insulated:

#8 - 2/0 AWG; YAEV-L, YAEV-H, YAEV-RS, YAEV-RH

Splices:

#8 - 1500 kcmil; YS, YS-T, YS-L, YS-LB, YST, YSP-T,
YGS, YGHS

Taps:

#14 - 1000 kcmil; YH, YCHC
to 4/0 AWG; YC-C

Taps, grounding:

to 500 kcmil; YGHC-C, YGHP-C, YGHR-C

Aluminum - #8 AWG - 1250 kcmil

Code Cables

Terminals: YA-A, AYP, AYPO

Splices: YS-A, YS-AT, YRB

Taps: YFD, YFN, YFO, YFR

ACSR - see Overhead Transmission & Distribution Sections H & I
of the current BURNDY® Master Catalog



Specifications:

Output Force:	15 Tons
Tool Weight:	18.9 lbs
Size:	18.00" x 14.00" x 3.00"
Die Style:	P and U style (with PUADP1)
Jaw Opening:	2.00"
Operating Voltage:	18 V-DC Lithium-Ion
Recharge Time:	30 minutes (3.0Ah) 45 minutes (5.0Ah)
Warranty:	5 year limited warranty Lifetime warranty on INFINITY DRIVE® 3 year on batteries and charger

Accessories:

P15K:	Cutter Die, max. diameter 1.2"
PUADP1:	U Die Adapter
BAT18VLI:	3.0Ah Li-Ion battery
BAT18V5AHLI:	5.0Ah Li-Ion battery
PATCHGRLL:	120V-AC Charger
PATCHGRLLIDC:	12/24V-DC Charger
PT208620:	Lanyard
FORCEGAUGE1215:	Force Test Gauge

Models:

PAT46LWSLI	with 3.0Ah Li-Ion batteries, hard case
PAT46CLWSLI	with rubber covered head (3.0Ah), hard case
PAT46LWSL5	with 5.0Ah Li-Ion batteries, hard case
PAT46CLWSL5	with rubber covered head (5.0Ah), hard case
PAT46LWSLIPB	with 3.0Ah Li-Ion batteries, pro bag
PAT46CLWSLIPB	with rubber covered head (3.0Ah), pro bag
PAT46LWSL5PB	with 5.0Ah Li-Ion batteries, pro bag
PAT46CLWSL5PB	with rubber covered head (5.0Ah), pro bag

See Important Notes page at start of Tooling Section.

PATRIOT® 15 Ton, Latch Head
Hydraulic Self-Contained, 18V Lithium-Ion

Tool Series: PAT46LW

- 2" ram travel
- Used with P dies; U dies with PUADP1 adapter (sold separately)
- Light weight, Latch-head
- 355° head rotation
- Ergonomically balanced
- Includes 2 batteries, charger, and carrying case
- **EP Enhanced Power** — tools accept 2.0, 3.0, 4.0, 5.0, and 6.0Ah Makita batteries



For Use On:

Copper - #8 AWG Str. - 1500 kcmil

Code Cable, Navy Cable, Flexible, Extra Flexible
1/2" - 1" Ground Rods

Terminals, grounding:

to 500 kcmil; YGA, YGHA, YGF

Terminals, uninsulated:

#8 - 1500 kcmil; YA, YA-2N, YA-L, YA-LB, YA-TC, YA-2LN,
YAB-4N, YAV-L, YAV-RS, YA-TC-FX

Terminals, insulated:

#8 - 2/0 AWG; YAEV-L, YAEV-H, YAEV-RS, YAEV-RH

Splices:

#8 - 1500 kcmil; YS, YS-T, YS-L, YS-LB, YST, YSP-T,
YGS, YGHS

Taps:

#14 - 1000 kcmil; YH, YCHC
to 4/0 AWG; YC-C

Taps, grounding:

to 500 kcmil; YGHC-C, YGHP-C, YGHR-C

Aluminum - #8 AWG - 1250 kcmil

Code Cables

Terminals: YA-A, AYP, AYPO

Splices: YS-A, YS-AT, YRB

Taps: YFD, YFN, YFO, YFR

ACSR - see Overhead Transmission & Distribution Sections H & I
of the current BURNDY® Master Catalog

Specifications:

Output Force:	15 Tons
Tool Weight:	16.8 lbs
Size:	18.75" x 13.75" x 3.75"
Die Style:	P and U style (with PUADP1)
Operating Voltage:	18 V-DC Lithium-Ion
Recharge Time:	30 minutes (3.0Ah) 45 minutes (5.0Ah)
Warranty:	5 year limited warranty Lifetime warranty on INFINITY DRIVE® 3 year on batteries and charger

Accessories:

P15K:	Cutter Die, max. diameter 1.2"
PUADP1:	U Die Adapter
BAT18VLI:	3.0Ah Li-Ion battery
BAT18V5AHLI:	5.0Ah Li-Ion battery
PATCHGRLL:	120V-AC Charger
PATCHGRLLDC:	12/24V-DC Charger
PT208620:	Lanyard
FORCEGAUGE1215:	Force Test Gauge

Models:

PAT46LWLI	with 3.0Ah batteries, hard case
PAT46LWL5	with 5.0Ah batteries, hard case
PAT46LWLIPB	with 3.0Ah batteries, pro bag
PAT46LWL5PB	with 5.0Ah batteries, pro bag

See Important Notes page at start of Tooling Section.

PATRIOT® 12 Ton, C-Head

Hydraulic Self-Contained, 18V Lithium-Ion

Tool Series: PAT750

- 1.65" jaw opening
- Used with U dies
- C-head with 355° head rotation
- Patented T-Track alignment guide for HYGROUND® as well as other asymmetrical connectors
- Includes 2 batteries, charger, and carrying case
- **EP Enhanced Power** — tools accept 2.0, 3.0, 4.0, 5.0, and 6.0Ah Makita batteries

For Use On:

Tension Sleeves

Copper	#8 sol. - 500 kcmil
Aluminum	#8 sol. - 587.2 kcmil
ACSR	#4 - 556.5 kcmil

Taps

Copper	#14 sol. - 500 kcmil
Aluminum	#8 - 500 kcmil

Aerial Cable

Copper	#6 - 500 kcmil
--------	----------------

Terminals & Splices

Copper	#8 - 750 kcmil
Aluminum	#8 - 750 kcmil
ACSR	#4 - 556.5 kcmil

HYGROUND® (Compression Grounding)

Copper	#8 - 500 kcmil
Ground Rods	1/2" - 1" diameter



Wide U-dies (sold separately) can be used with long barrel terminals and splices saving time and labor!



Specifications:

Output Force:	12 Tons
Tool Weight:	15.7 lbs
Size:	15.75" x 13.50" x 3.50"
Die Style:	U style
Jaw Opening:	1.65"
Operating Voltage:	18 V-DC Lithium-Ion
Recharge Time:	30 minutes (3.0Ah) 45 minutes (5.0Ah)
Warranty:	5 year limited warranty Lifetime warranty on INFINITY DRIVE® 3 year on batteries and charger

Accessories:

BAT18VLI:	3.0Ah Li-Ion battery
BAT18V5AHLI:	5.0Ah Li-Ion battery
PATCHGRLI:	120V-AC Charger
PATCHGRLIDC:	12/24V-DC Charger
PT208620:	Lanyard
FORCEGAUGE1215:	Force Test Gauge

Models:

PAT750LI	with 3.0Ah Li-Ion batteries, hard case
PAT750CLI	with rubber covered head (3.0Ah), hard case
PAT750L5	with 5.0Ah Li-Ion batteries, hard case
PAT750CL5	with rubber covered head (5.0Ah), hard case
PAT750LIPB	with 3.0Ah Li-Ion batteries, pro bag
PAT750CLIPB	with rubber covered head (3.0Ah), pro bag
PAT750L5PB	with 5.0Ah Li-Ion batteries, pro bag
PAT750CL5PB	with rubber covered head (5.0Ah), pro bag

See Important Notes page at start of Tooling Section.

PATRIOT® 11 Ton, C-Head, Dieless
Hydraulic Self-Contained, 18V Lithium-Ion

Tool Series: PAT444S

- New C-Head style for easy access and increased flexibility
- Dieless System with range taking capability
- 355° Head rotation
- Ergonomically balanced
- Includes 2 batteries, charger, and carrying case
- **EP Enhanced Power** — tools accept 2.0, 3.0, 4.0, 5.0, and 6.0Ah Makita batteries

For Use On:

Copper #4 - 1000 kcmil Code & Flex

Terminals: YA-L, YA-2LN, YA, YA-2N, YA-L-2TC, YAB-4N,
YA-L-TC, YA-2L, YA-4N, YAV, YAZ, YA-L-FX, YA-FXB, YAG

Splices: YS-L, YS, YS-T

Copper #4 - 1000 kcmil Code; #2 - 777 kcmil Flex

HYPLUG™: YE-P, YE-P-FX, YEV-P-FX

Aluminum #4 AWG - 1000 kcmil

Terminals: YA-A, YA-A-TN

Splices: YS-A

HYPLUG™: AYP, AYPO

ACSR, AAC, AAAC, ACAR #4 AWG - 556.5 kcmil

Splices: YDS-RL, YDS-RLNI

Cable Pulling Heads: YCP-L

#6 AWG - 1000 kcmil (copper & aluminum)

See Expanded Range details at start of Section C.



Unique 444S Crimp
Embossment

Connections are UL Listed to UL 486A-486B on
Copper and Aluminum terminals and splices

Comply with ANSI C119.4 on YDS-RL and YDS-RLNI Splices
(ACSR, AAC, AAAC, ACAR)

Qualified for use on YCP-L Compression Pulling Heads



Specifications:

Output Force:	11 Tons
Tool Weight:	16 lbs
Size:	16.9" x 13.7" x 3.2"
Die Style:	Dieless
Operating Voltage:	18 V-DC Lithium-Ion
Recharge Time:	
3.0Ah	30 minutes
5.0Ah	45 minutes
Warranty:	5 year limited warranty Lifetime warranty on INFINITY DRIVE® 3 years on batteries and charger

Accessories:

BAT18VLI:	Hi-capacity Li Makita battery (3.0Ah)
BAT18V5AHLI:	Hi-capacity Li Makita battery (5.0Ah)
PATCHGRLI:	120V-AC Makita charger
PATCHGRLIDC:	12/24V-DC Makita charger
FORCEGAUGE11:	Force Test Gauge

Models:

PAT444SLI	with 3.0Ah Li-Ion batteries, hard case
PAT444SL5	with 5.0Ah Li-Ion batteries, hard case
PAT444SLIPB	with 3.0Ah Li-Ion batteries, pro bag
PAT444SL5PB	with 5.0Ah Li-Ion batteries, pro bag

See Important Notes page at start of Tooling Section.

PATRIOT® 11 Ton, Latch Head, Dieless Hydraulic Self-Contained, 18V Lithium-Ion

Tool Series: PAT644

- Dieless system
- Range taking capabilities
- 355° head rotation
- Ergonomically balanced
- Includes 2 batteries, charger, and carrying case
- **EP Enhanced Power** — tools accept 2.0, 3.0, 4.0, 5.0, and 6.0Ah Makita batteries



For Use On:

Copper #4 - 1000 kcmil Code; #2 - 777 kcmil Flex

Terminals: YA-L, YA-2LN, YA, YA-2N, YA-L-2TC, YAB-4N, YA-L-TC, YA-2L, YA-4N, YAV, YAZ, YA-L-FX, YA-FXB, YAG
Splices: YS-L, YS, YS-T
HYPLUG™: YE-P, YE-P-FX, YEV-P-FX

Aluminum #6 AWG - 900 kcmil

Terminals: YA-A, YA-A-TN
Splices: YS-A
HYPLUG™: AYP, AYPO

ACSR, AAC, AAAC, ACAR #4 AWG - 556.5 kcmil

Splices: YDS-RL, YDS-RLNI

Cable Pulling Heads: YCP-L

#6 AWG - 1000 kcmil (copper & aluminum)

See Expanded Range details at start of Section C.

Connections are UL Listed to UL 486A-486B on
Copper and Aluminum terminals and splices

Comply with ANSI C119.4 on YDS-RL and YDS-RLNI Splices
(ACSR, AAC, AAAC, ACAR)

Qualified for use on YCP-L Compression Pulling Heads

Specifications:

Output Force:	11 Tons
Tool Weight:	15.9 lbs
Size:	15.62" x 14.12" x 3.25"
Die Style:	Dieless
Operating Voltage:	18 V-DC Lithium-Ion
Recharge Time:	30 minutes (3.0Ah) 45 minutes (5.0Ah)
Warranty:	5 year limited warranty Lifetime warranty on INFINITY DRIVE® 3 year on batteries and charger

Accessories:

BAT18VLI:	3.0Ah Li-Ion battery
BAT18V5AHLI:	5.0Ah Li-Ion battery
PATCHGRLL:	120V-AC Charger
PATCHGRLLDC:	12/24V-DC Charger
PT208620:	Lanyard
FORCEGAUGE11:	Force Test Gauge

Models:

PAT644LI	with 3.0Ah Li-Ion batteries, hard case
PAT644L5	with 5.0Ah Li-Ion batteries, hard case
PAT644LIPB	with 3.0Ah Li-Ion batteries, pro bag
PAT644L5PB	with 5.0Ah Li-Ion batteries, pro bag

See Important Notes page at start of Tooling Section.

PATRIOT® 4-POINT® 6 Ton, Latch Head, Dieless
Hydraulic Self-Contained, 18V Lithium-Ion

Tool Series: PAT81KFT

- Dieless system
- Range taking capabilities
- 360° head rotation
- Mechanical ram release
- Includes 2 batteries, charger, and carrying case
- **EP Enhanced Power** — tools accept 2.0, 3.0, 4.0, 5.0, and 6.0Ah Makita batteries

For Use On:

Copper #8 - 1000 kcmil

Terminals: YA, YA-L

Splices: YS-L, YS, YS-T, Y-R

Copper Flex #8 - 646 kcmil Flex

Terminals: YA-FX, YAV, YA-L-FX

Splices: YS, YSV-FXB

Aluminum #8 - 750 kcmil

Terminals: YA-A, YA-A-TN

Splices: YS-A

HYPLUG™: AYP, AYPO

See *Expanded Range details at start of Section C.*



Specifications:

Output Force:	6 Tons
Tool Weight:	13.2 lbs
Size:	15.62" x 14.12" x 3.25"
Die Style:	Dieless
Operating Voltage:	18 V-DC Lithium-Ion
Recharge Time:	30 minutes (3.0Ah) 45 minutes (5.0Ah)
Warranty:	5 year limited warranty Lifetime warranty on INFINITY DRIVE® 3 year on batteries and charger

Accessories:

BAT18VLI:	3.0Ah Li-Ion battery
BAT18V5AHLI:	5.0Ah Li-Ion battery
PATCHGRLL:	120V-AC Charger
PATCHGRLLDC:	12/24V-DC Charger
PT208620:	Lanyard

Models:

PAT81KFTLI	with 3.0Ah Li-Ion batteries, hard case
PAT81KFTL5	with 5.0Ah Li-Ion batteries, hard case
PAT81KFTLIPB	with 3.0Ah Li-Ion batteries, pro bag
PAT81KFTL5PB	with 5.0Ah Li-Ion batteries, pro bag

See Important Notes page at start of Tooling Section.

PATRIOT® 4-POINT® 6 Ton, C-Head, Dieless
Hydraulic Self-Contained, 18V Lithium-Ion

Tool Series: PAT4PC834

- Dieless system
- Range taking capabilities
- 360° head rotation
- Ergonomically balanced
- Includes 2 batteries, charger, and carrying case
- **EP Enhanced Power** — tools accept 2.0, 3.0, 4.0, 5.0, and 6.0Ah Makita batteries



For Use On:

Copper

Terminals: YA, YA-L (#8-1000 kcmil)
Splices: YS-L, YS, YS-T, Y-R (#8-500 kcmil)

Copper Flex

Terminals: YA-FX, YAV, YA-L-FX (#8-777.7 Flex)
Splices: YS, YSV-FXB (#8-500 kcmil)

Aluminum

Terminals: YA-A, YA-A-TN (#8-750 kcmil)
Splices: YS-A (#8-350 kcmil)*
HYPLUG™: AYP, AYPO (#8-750 kcmil)

*1.06" barrel diameter maximum for splices due to jaw opening

See Expanded Range details at start of Section C.

Specifications:

Output Force:	6 Tons
Tool Weight:	13.0 lbs
Size:	15.62" x 13.20" x 3.25"
Die Style:	Dieless
Operating Voltage:	18 V-DC Lithium-Ion
Recharge Time:	30 minutes (3.0Ah) 45 minutes (5.0Ah)
Warranty:	5 year limited warranty Lifetime warranty on INFINITY DRIVE® 3 year on batteries and charger

Accessories:

BAT18VLI:	3.0Ah Li-Ion battery
BAT18V5AHLI:	5.0Ah Li-Ion battery
PATCHGRLLI:	120V-AC Charger
PATCHGRLLDC:	12/24V-DC Charger
PT208620:	Lanyard

Models:

PAT4PC834LI	with 3.0Ah Li-Ion batteries, hard case
PAT4PC834L5	with 5.0Ah Li-Ion batteries, hard case
PAT4PC834LIPB	with 3.0Ah Li-Ion batteries, pro bag
PAT4PC834L5PB	with 5.0Ah Li-Ion batteries, pro bag

See Important Notes page at start of Tooling Section.

PATRIOT® 6 Ton, Latch Head
Hydraulic Self-Contained, 18V Lithium-Ion

Tool Series: PAT600

- Permanent functional D3 groove (no die needed)
- Uses W and X style dies
- 180° head rotation
- Enhanced clearance for tap connections
- Includes 2 batteries, charger, and carrying case
- **EP Enhanced Power** — tools accept 2.0, 3.0, 4.0, 5.0, and 6.0Ah Makita batteries

For Use On:

Copper #8 - 600 kcmil

Terminals: YA, YA-L
Splices: YS-L, YS, YS-T, Y-R

Copper Flex #8 - 350 kcmil Flex

Terminals: YA-FX, YAV, YA-L-FX
Splices: YS, YSV-FXB

Aluminum #8 - 350 kcmil

Terminals: YA-A, YA-A-TN
Splices: YS-A

Models:

PAT600LI with 3.0Ah Li-Ion batteries, hard case
PAT600L5 with 5.0Ah Li-Ion batteries, hard case

PAT600LIPB with 3.0Ah Li-Ion batteries, pro bag
PAT600L5PB with 5.0Ah Li-Ion batteries, pro bag



WDC4500
(sold separately)



WDA8300
(sold separately)



Specifications:

Output Force:	6 Tons
Tool Weight:	10.1 lbs
Size:	14.50" x 13.75" x 3.50"
Die Style:	W and X style dies
Operating Voltage:	18 V-DC Lithium-Ion
Recharge Time:	30 minutes (3.0Ah) 45 minutes (5.0Ah)
Warranty:	5 year limited warranty Lifetime warranty on INFINITY DRIVE® 3 year on batteries and charger

Accessories:

BAT18VLI:	3.0Ah Li-Ion battery
BAT18V5AHLI:	5.0Ah Li-Ion battery
PATCHGRLL:	120V-AC Charger
PATCHGRLLDC:	12/24V-DC Charger
PT208620:	Lanyard
WDIETREE:	W die holder
WDC4500*:	Range taking die for #4 - 500 Cu Str. and #2 - 4/0 Cu Flex
WDA8300*:	Range taking die for #8 - 300 Al, #6 - 400 Cu Str. and #2 - 4/0 Cu Flex

* When used with UL Listed/CSA Certified YA, YS, YA-A, and YS-A series terminals and splices, connections are UL/CSA. Range taking dies also for use on the YAV and YSV series.

See Important Notes page at start of Tooling Section.

PATRIOT® 6 Ton, Scissor Action

Hydraulic Self-Contained, 18V Lithium-Ion

Tool Series: PAT500SJ

- Interchangeable scissor action crimping and cutting jaws
- 180° head rotation
- Uses W and X style dies
- Ergonomically balanced tool design
- Includes 2 batteries, charger, and polymer carrying case
- **EP Enhanced Power** — tools accept 2.0, 3.0, 4.0, 5.0, and 6.0Ah Makita batteries

For Use On:

Copper, Aluminum, ACSR, Steel, Copperweld, Alumoweld, 6201, 5005, Compressed, and Compact Conductors

Taps:

Copper: #10 sol. to 2/0 str.
Aluminum & ACSR: #14 sol. to 4/0 ACSR

Stirrups:

#6 to 4/0 ACSR

Overhead Full Tension Deadends, Full Tension Splices and Terminals:

#10 str. to 4/0 ACSR

Installs Splices, Taps or Terminations:

#8 to 500 kcmil Copper Stranded (YA, YA-L, YS, YS-L)
#8 to 350 kcmil Copper Flex
#8 to 350 kcmil Aluminum (YA-A, YS-A)

Models:

PAT500SJ6LI	BG and D3 grooves (3.0Ah)
PAT500SJ68LI	O and D3 grooves (3.0Ah)
PAT500SJ66LI	D3 groove only (snub-nose) (3.0Ah)
PAT500SJ6L5	BG and D3 grooves (5.0Ah)
PAT500SJ68L5	O and D3 grooves (5.0Ah)
PAT500SJ66L5	D3 groove only (snub-nose) (5.0Ah)

Interchangeable Jaw Assemblies:

PATMD6LWJAW	Crimp jaw with BG and D3 grooves
PATMD68LWJAW	Crimp jaw with O and D3 grooves
PATMD66LWJAW	Crimp jaw with D3 groove only
PATMDXPJLWJAW	Crimp jaw with X, P & J grooves
PATMD430LWJAW	Crimp jaw, Dieless, #4 AWG - 3/0 AWG
PATMDCUTLWJAW	Cutting jaw with ACSR blades
PATMDCUTCLWJAW	Cutting jaw with CU/AL blades
PATMDCUTGLWJAW	Cutting jaw with GUY blades



Specifications:

Output Force:	6 Tons
Tool Weight:	11.5 lbs
Size:	17.00" X 14.25" X 3.00"
Die Style:	W and X (with crimping jaws)
Operating Voltage:	18 V-DC Lithium-Ion
Recharge Time:	30 minutes (3.0Ah) 45 minutes (5.0Ah)
Warranty:	5 year limited warranty Lifetime warranty on INFINITY DRIVE® 3 year on batteries and charger

Accessories:

BAT18VLI:	3.0Ah Li-Ion battery
BAT18V5AHLI:	5.0Ah Li-Ion battery
PATCHGRLLI:	120V-AC Charger
PATCHGRLLDC:	12/24V-DC Charger
PATMD6LWJWCVR:	Jaw covers for PATMD6 and PATMD68 versions
PATMD66LWJWCVR:	Jaw covers for PATMD66 snub-nose versions
PT10074020:	Wrist strap
W28K:	Cutter Dies (cuts 4-4/0 Cu, Al, ACSR)
WDIETREE:	W-die holder for 6 die sets

Crimp/Cut Kits:

PAT500SJ6LICUTKIT1	Kit includes crimp head with BG & D3 grooves, cutter jaw with ACSR blades, 120V charger and 2 batteries (3.0Ah)
PAT500SJ68LICUTKIT1	Kit includes crimp head with O & D3 grooves, cutter jaw with ACSR blades, 120V charger and 2 batteries (3.0Ah)

See Important Notes page at start of Tooling Section.

PATRIOT® 6 Ton, Scissor Action
Hydraulic Self-Contained, 18V Lithium-Ion

Tool Series: PATMD-LW

- Light weight, compact and ergonomic design
- Interchangeable scissor action crimping and cutting jaws
- Safety trigger lock and locking jaw tabs
- LED Worklight
- **EP Enhanced Power** — tools accept 2.0, 3.0, 4.0, 5.0, and 6.0Ah Makita batteries

Crimp Capacity*		
Connector Type	Conductor Type	Range
Terminals & Splices	Copper	#8 AWG - 500 kcmil
Terminals & Splices	Flex Copper	#8 AWG - 350 kcmil
Terminals & Splices	Aluminum (AAC)	#8 AWG - 350 kcmil
Full-Tension	ACSR	#10 - 4/0 AWG
Taps	Copper	#10 - 2/0 AWG
Taps	AAC or ACSR	#14 - 4/0 AWG
Stirrups	ACSR	#6 - 4/0 AWG

**Dieless Jaw only for use on #4-3/0 BURNDY® Overhead Distribution Families: YDS-RL, YDSR-RL, YDS-RLY, YDR-RL, YDRR-RL, YCS-RL, YCA-RL & YSS-R

Models:

- PATMD6LW:** BG and D3 grooves, 3.0Ah batteries
PATMD68LW: O and D3 grooves, 3.0Ah batteries
PATMD66LW: D3 groove only, 3.0Ah batteries
PATMD70003A1: XPJ grooves, 3.0Ah batteries
****PATMD80003A1:** **#4-3/0 dieless, 3.0Ah batteries
- PATMD6LW5:** BG and D3 grooves, 5.0Ah batteries
PATMD68LW5: O and D3 grooves, 5.0Ah batteries
PATMD66LW5: D3 groove only, 5.0Ah batteries
PATMD70005A1: XPJ grooves, 5.0Ah batteries
****PATMD80005A1:** **#4-3/0 dieless, 5.0Ah batteries

Interchangeable Jaw Assemblies:

- *PATMD6LWJAW** Crimp jaw with BG and D3 grooves
***PATMD68LWJAW** Crimp jaw with O and D3 grooves
***PATMD66LWJAW** Crimp jaw with D3 groove only
PATMDXPJLWJAW Crimp jaw with X, P, & J grooves
****PATMD430LWJAW** **Crimp jaw, Dieless for #4-3/0 AWG
PATMDCUTLWJAW Cutting jaw with ACSR blades
PATMDCUTCLWJAW Cutting jaw with CU/AL blades
PATMDCUTGLWJAW Cutting jaw with GUY blades



Shown with
BG / D3
Grooves

Interchangeable Jaws



Specifications:

Output Force:	6 Tons
Tool Weight:	6.7 lbs
Length:	17.85" - 18.73" (varies by jaw size)
Die Style*:	W and X (with crimping jaws; excluding XPJ grooves and 430 Dieless)
Operating Voltage:	18 V-DC Lithium-Ion
Recharge Time:	
3.0Ah	30 minutes
5.0Ah	45 minutes
Warranty:	5 year limited warranty Lifetime warranty on INFINITY DRIVE® 3 years on batteries and charger

Standard Crimp/Cut Kits are available supplied with both crimping and cutting jaws. (See separate pages in Cutters Section.)
 Customize a tool kit with up to 3 jaws and optional accessories.
 Contact Customer Service at 1-800-346-4175.

Accessories:

- BAT18VLI:** Hi-capacity LI Makita battery (3.0Ah)
BAT18V5AHLI: Hi-capacity LI Makita battery (5.0Ah)
PATCHGRLI: 120V-AC Makita charger
PATCHGRLLIDC: 12/24V-DC Makita charger
W28K: Cutter Dies (cuts 4-4/0 CU, AL, ACSR)
WDIETREE: W-die holder for 6 die sets
CASEWDIES: W-die case holder for 12 die sets
TOOLBAGMDLI: Tool bag (included with tool)

See Important Notes page at start of Tooling Section.

HYPRESS™ 12 Ton, C-Head

Hydraulic Self-Contained, Hand Operated

Tool Series: Y750HSXT

- 355° head rotation
- 1.65" jaw opening
- Rapid advance pump
- Uses standard BURNDY U dies (sold separately)

For Use On:

Tension Sleeves

Copper	#8 sol. - 500 kcmil
Aluminum	#8 sol. - 587.2 kcmil
ACSR	#4 - 556.5 kcmil

Taps

Copper	#14 sol. - 500 kcmil
Aluminum	#8 - 500 kcmil

Aerial Cable

Copper	#6 - 500 kcmil
--------	----------------

Terminals & Splices

Copper	#8 - 750 kcmil
Aluminum	#8 - 750 kcmil
ACSR	#4 - 556.5 kcmil

HYGROUND® (Compression Grounding)

Copper	#8 - 500 kcmil
Ground Rods	1/2" - 1" diameter

Models:

Y750HSXT	Standard C-Head tool
Y750CHSXT	Y750HSXT with rubber covered head



Specifications:

Output Force:	12 Tons
Tool Weight:	14.5 lbs
Size:	23.96" x 8.71" x 2.90"
Die Style:	U style
Jaw Opening:	1.65"
Warranty:	5 year limited warranty

Accessories:

PT10024162:	Plastic carrying case for Y750HSXT/Y750CHSXT
FORCEGAUGE1215:	Force test gauge for accurate reading of output force
CASEUDIES15:	Plastic die case for U dies

HYPRESS™ 12 Ton, C-Head
Hydraulic Self-Contained, Hand Operated

Tool Series: Y35

- 180° head rotation
- Uses BURNDY U style dies (sold separately)
- Body and handles rubber covered for impact protection
- Trigger controlled ram release

For Use On:

Copper #8 str. - 500 kcmil code cable

Grounding Terminals:

YGH, YGHA, YGF

Grounding Splices:

YGS, YGHS

Copper #8 str. - 500 kcmil and up to 3/4" ground rod

Grounding Taps:

YGHC-C, YGHP-C, YGHR-C

Copper #8 str. - 750 kcmil code cable, N30 - N500 Navy cable, flexible, and extra flex

Terminals (Bare):

YA, YA-2N, YA-L, YA-LB, YA-2LN

Terminals (Insulated):

YAEV-L, YAEV-H, YAEV-RS, YAEV-RH

Splices to 400 kcmil only:

YS, YS-T, YS-L, YS-LB, YSV-L, YSM

Aluminum #8 str. - 750 kcmil code cable

Terminals:

YA-A, AYP, AYPO

Splices to 350 kcmil only:

YSA, YRB, YS-AT

ACSR - see Overhead Transmission & Distribution Sections
H & I of the current BURNDY® Master Catalog



Specifications:

Output Force:	12 Tons
Tool Weight:	13.5 lbs
Size:	23.25" x 4.75" x 2.75"
Die Style:	U style
Warranty:	5 year limited warranty

Models:

Y35	Standard C-Head tool (rubber covered body and handles only)
Y352	Y35 with rubber covered head, body, and handles

Accessories:

PT2972:	Steel Carry Case (included with tool)
Y35/Y39REPKITA:	Seal Repair Kit
PT292792	12 ton Force Gauge

HYPRESS™ 11 Ton, Latch Head, Dieless Hydraulic Self-Contained, Hand Operated

Tool: Y644HSXT

- 355° head rotation
- Dieless System
- Range taking capabilities
- Only "1" crimp necessary for most standard and long barrel terminals and splices
- Easy inspection; positive identification proved with BURNDY® 'Bug' (☹) embossment after crimp completion

For Use On:

Copper #4 - 1000 kcmil Code; #2 - 777 kcmil Flex

Terminals: YA-L, YA-2LN, YA, YA-2N, YA-L-2TC, YAB-4N, YA-L-TC, YA-2L, YA-4N, YAV, YAZ, YA-L-FX, YA-FXB, YAG

Splices: YS-L, YS, YS-T

HYPLUG™: YE-P, YE-P-FX, YEV-P-FX

Aluminum #6 - 900 kcmil

Terminals: YA-A, YA-A-TN

Splices: YS-A

HYPLUG™: AYP, AYPO

ACSR, AAC, AAAC, ACAR #4 AWG - 556.5 kcmil

Splices: YDS-RL

Cable Pulling Heads: YCP-L
#6 AWG - 1000 kcmil (copper & aluminum)

See *Expanded Range details at start of Section C.*



Specifications:

Output Force:	11 Tons
Tool Weight:	15.0 lbs
Size:	23.20" x 7.04" x 3.00"
Die Style:	Dieless
Warranty:	5 year limited warranty

Models:

Y644HSXT	Standard Dieless Latch Head tool
----------	----------------------------------

Accessories:

Y644HSCASE:	Plastic carrying case (included with tool)
-------------	--

4-POINT® 6 Ton, Latch Head, Dieless
Hydraulic Self-Contained, Hand Operated

Tool: Y81KFT

- Dieless System
- Range taking capabilities
- Flip top latch head design
- 360° head rotation

For Use On:

Copper #8 - 1000 kcmil

Terminals: YA, YA-L
Splices: YS-L, YS, YS-T, Y-R

Copper Flex #8 - 646 kcmil Flex

Terminals: YA-FX, YAV, YA-L-FX
Splices: YS, YSV-FXB

Aluminum #8 - 750 kcmil

Terminals: YA-A, YA-A-TN
Splices: YS-A
HYPLUG™: AYP, AYPO

See Expanded Range details at start of Section C.



Specifications:

Output Force:	6 Tons
Tool Weight:	12.0 lbs
Size:	25.60" x 7.70" x 2.50"
Die Style:	Dieless
Warranty:	5 year limited warranty

Models:

Y81KFT	Standard 4-POINT® Dieless Latch Head tool
--------	---

Accessories:

PT10050733:	Plastic carrying case (included with tool)
-------------	--

4-POINT® 6 Ton, C-Head, Dieless Hydraulic Self-Contained, Hand Operated

Tool: Y4PC834

- 360° head rotation
- Dieless System
- Range taking capabilities
- Handle trigger release

For Use On:

Copper

Terminals: YA, YA-L (#8-1000 kcmil)
Splices: YS-L, YS, YS-T, Y-R (#8-500 kcmil)

Copper Flex

Terminals: YA-FX, YAV, YA-L-FX (#8-777.7 Flex)
Splices: YS, YSV-FXB (#8-500 kcmil)

Aluminum

Terminals: YA-A, YA-A-TN (#8-750 kcmil)
Splices: YS-A (#8-350 kcmil)*
HYPLUG™: AYP, AYPO (#8-750 kcmil)

*1.06" barrel diameter maximum for splices due to jaw opening

See Expanded Range details at start of Section C.



Specifications:

Output Force:	6 Tons
Tool Weight:	11.9 lbs
Size:	25.62" x 7.75" x 2.50"
Die Style:	Dieless
Warranty:	5 year limited warranty

Models:

Y4PC834 Standard 4-POINT® Dieless C-Head tool

Accessories:

PT10050733: Plastic Carrying Case (included with tool)

L'IL CRIMP™ 6 Ton, Latch Head
Hydraulic Self-Contained, Hand Operated

Tool: Y500CTHS

- Permanent functional D3 groove (no die needed)
- Used with W and X style dies
- 180° head rotation
- Enhanced clearance for tap connectors

For Use On:

Copper, Aluminum, ACSR, Steel, Copperweld, Alumoweld, 6201, 5005, Compressed, Compact, Stranded and Solid conductors

Installs Splices, Taps or Terminations:

- #8 - 600 kcmil Copper Str.
- #8 - 350 kcmil Flex
- #8 - 350 kcmil Aluminum



Specifications:

Output Force:	6 Tons
Tool Weight:	7.8 lbs
Size:	18.00" x 5.50" x 2.68"
Die Style:	W and X style dies
Warranty:	5 year limited warranty



*WDC4500 range taking die for
#4 - 500 Cu Str. and
#2 - 4/0 Cu Flex
(sold separately)*

*WDA8300 range taking die for
#8 - 300 Al,
#6 - 400 Cu Str. and
#2 - 4/0 Cu Flex
(sold separately)*



Models:

Y500CTHS	Standard Latch Head tool
----------	--------------------------

Accessories:

WDC4500:	Range taking die for #4 - 500 Cu Str. and #2 - 4/0 Cu Flex
WDA8300:	Range taking die for #8 - 300 Al, #6 - 400 Cu Str. and #2 - 4/0 Cu Flex
PT212851:	Metal Carrying Case (included with tool)

When used with UL Listed/CSA Certified YA, YS, YA-A, and YS-A series terminals and splices, connections are UL/CSA.

Range taking dies also for use on the YAV and YSV series.

60 Ton, Latch Head, Remote Powered Single Acting Light Weight Hydraulic Tool

Tool: Y60LW

- Remote power operated
- Used with BURNDY L, wide L style dies, and HPS/Fargo-equivalent 60 ton dies
- Base stand and metal carry case (for head only) included
- Side lift handle

For Use On:

Copper 300 - 2000 kcmil Str. Code Cable

Terminals: YA, YA-2N, YA-4N, YA-L, YA-2LN, YA-LB

Splices: YS, YST, YS-L, YS-T, YSP-T

Aluminum 250 - 2000 kcmil Str. Code Cable

Terminals: YA-A

Splices: YS-A, YS-AT

Transmission & Distribution Connectors:

Tension Sleeves:

Copper: 1/0 str. - 1000 kcmil

Aluminum: 1/0 str. - 2300 kcmil

ACSR: 1/0 str. - 2156 (84/19 str.) kcmil

Aerial:

Copper: 4/0 str. - 2500 kcmil

Aluminum: 3/0 str. - 2500 kcmil

Types: YTS, YTN, YNS, YNA, YNT, YNTA, YNU, YDS,

YDN, YCS, YCA, YCU



Wide L-dies (sold separately) can be used to save time and labor! Indicator marks on die set for ease of aligning connector properly. L725W shown.



Specifications:

Output Force:	60 Tons
Tool Weight:	43.0 lbs
Size:	12.93" x 8.06" x 8.06"
Die Style:	L style (standard or wide style); HPS/Fargo-equivalent 60 ton dies
Operating Pressure:	10,000 PSI
Warranty:	5 year limited warranty

Models:

Y60LW Standard Remote Latch Head tool

Accessories:

Y60LWSTAND: Metal stand for Y60LW (included with tool)
Y60LWCASE: Steel carry case for Y60LW head (included with tool)

See Gas or Electric Pumps and Hydraulic Hoses; Pump Accessories for other necessary equipment.



*Y60LW pictured on
Y60LWSTAND
(included with tool purchase)*

15 Ton, Remote C-Head
Remote Operated Hydraulic Tool

Tool Series: Y46LWSBH

- 2" jaw opening
- Used with P dies; U dies with PUADP1 adapter (sold separately)
- Positive push button die locks
- Light weight scoop style open head design

For Use On:

Copper - #8 AWG Str. - 1500 kcmil

Code Cable, Navy Cable, Flexible, Extra Flexible
1/2" - 1" Ground Rods

Terminals, grounding:

to 500 kcmil; YGA, YGHA, YGF

Terminals, uninsulated:

#8 - 1500 kcmil; YA, YA-2N, YA-L, YA-LB, YA-TC,
YA-2LN, YAB-4N, YAV-L, YAV-RS, YA-TC-FX

Terminals, insulated:

#8 - 2/0 AWG; YAEV-L, YAEV-H, YAEV-RS, YAEV-RH

Splices:

#8 - 1500 kcmil; YS, YS-T, YS-L, YS-LB, YST,
YSP-T, YGS, YGHS

Taps:

#14 - 1000 kcmil; YH, YCHC
to 4/0 AWG; YC-C

Taps, grounding:

to 500 kcmil; YGHC-C, YGHP-C, YGHR-C

Aluminum - #8 AWG - 1250 kcmil

Code Cables

Terminals: YA-A, AYP, AYPO

Splices: YS-A, YS-AT, YRB

Taps: YFD, YFN, YFO, YFR

ACSR - See Overhead Transmission & Distribution

Sections H & I of the current BURNDY® Master Catalog



Specifications:

Output Force:	15 Tons
Tool Weight:	14.5 lbs
Size:	14.68" x 5.06" x 2.88"
Die Style:	P style and U style with PUADP1 adapter
Operating Pressure:	10,000 PSI
Cycles:	10,000
Warranty:	5 year limited warranty

Models:

Y46LWSBH	Standard Light Weight C-Head tool
Y46CLWSBH	Permanently molded head of 3/16" rubber included separate molded rubber boot for lower body and hydraulic coupler
Y46CLWSBHF	Y46CLWSBH (covered) tool with Female coupler
Y46LWSBHF	Y46LWSBH tool with Female coupler (not rubber covered)

Accessories:

PUADP1:	U die adapter
P15K:	Cutter Die, max. diameter 1.2"
PT10054094:	Red Nylon Carry Bag (included with tool)

*See Hydraulic Pumps and Hydraulic Hoses;
Pump Accessories
for other necessary equipment.*

15 Ton, Remote Latch Head Remote Operated Hydraulic Tool

Tool Series: Y46LWBH

- 2" ram travel
- Used with P dies; U dies with PUADP1 adapter (sold separately)
- Positive push button die locks
- Light weight latch head design

For Use On:

Copper - #8 AWG Str. - 1500 kcmil

Code Cable, Navy Cable, Flexible, Extra Flexible
1/2" - 1" Ground Rods

Terminals, grounding:

to 500 kcmil; YGA, YGHA, YGF

Terminals, uninsulated:

#8 - 1500 kcmil; YA, YA-2N, YA-L, YA-LB, YA-TC,
YA-2LN, YAB-4N, YAV-L, YAV-RS, YA-TC-FX

Terminals, insulated:

#8 - 2/0 AWG; YAEV-L, YAEV-H, YAEV-RS, YAEV-RH

Splices:

#8 - 1500 kcmil; YS, YS-T, YS-L, YS-LB, YST,
YSP-T, YGS, YGHS

Taps:

#14 - 1000 kcmil; YH, YCHC
to 4/0 AWG; YC-C

Taps, grounding:

to 500 kcmil; YGHC-C, YGHP-C, YGHR-C

Aluminum - #8 AWG - 1250 kcmil

Code Cables

Terminals: YA-A, AYP, AYPO

Splices: YS-A, YS-AT, YRB

Taps: YFD, YFN, YFO, YFR

ACSR - See Overhead Transmission & Distribution
Sections H & I of the current BURNDY® Master Catalog



Specifications:

Output Force:	15 Tons
Tool Weight:	12.4 lbs
Size:	14.88" x 5.06" x 3.07"
Die Style:	P style and U style with PUADP1 adapter
Operating Pressure:	10,000 PSI
Cycles:	10,000
Warranty:	5 year limited warranty

Models:

Y46LWBH	Standard Light Weight Latch Head tool
Y46LWBHF	Y46LWBH tool with Female coupler (not rubber covered)

Accessories:

PUADP1:	U die adapter
P15K:	Cutter Die, max. diameter 1.2"
PT10054094:	Red Nylon Carry Bag (included with tool)

*See Hydraulic Pumps and Hydraulic Hoses;
Pump Accessories
for other necessary equipment.*

15 Ton, Remote C-Head
Remote Operated Hydraulic Tool

Tool: Y45

- Lifting eye
- Fully protected ram and die buttons
- Used with S dies; U dies with PT6515 adapter (sold separately)

For Use On:

Tension Sleeves:

- Copper #8 sol. - 500 kcmil
- Aluminum #6 sol. - 954 kcmil
- ACSR #4 - 795 (26/7) kcmil

Taps:

- Aluminum #14 - 954 (18/1) kcmil
- ACSR #6 - 795 (54/7) kcmil

Aerial Cable Connectors:

- Copper #6 str. - 1500 kcmil
- Aluminum #4 str. - 1000 kcmil

HYGROUND® Compression Grounding:

- Copper #6 - 500 kcmil
- 1/2" - 1" ground rods

Code Cable Terminals/Splices:

- Copper #8 - 1500 kcmil
- Aluminum #8 - 1000 kcmil

Code Cable Taps:

- Copper #14 - 1000 kcmil
- Aluminum #14 - 900 kcmil



Specifications:

Output Force:	15 Tons
Tool Weight:	15.5 lbs
Size:	15.25" x 4.50" x 2.62"
Die Style:	S style and U style with PT6515 adapter
Operating Pressure:	10,000 PSI
Cycles:	10,000
Warranty:	5 year limited warranty

Models:

Y45	Standard Remote C-Head tool
-----	-----------------------------

Accessories:

PT6515:	Adapter for use with U die sets
PT6545:	Die carrying case for S and/or P die type dies. Holds eight (8) die sets. Dies sold separately.
433206016010:	Carry Case (included with tool)

*See Hydraulic Pumps and Hydraulic Hoses;
Pump Accessories
for other necessary equipment.*

12 Ton, Remote C-Head Remote Operated Hydraulic Tool

Tool: Y750BHXT

- 1.65" jaw opening
- 355° head rotation
- Used with U style dies
- Exposed positive die lock buttons

For Use On:

Tension Sleeves

Copper	#8 sol. - 500 kcmil
Aluminum	#8 sol. - 587.2 kcmil
ACSR	#4 - 556.5 kcmil

Taps

Copper	#14 sol. - 500 kcmil
Aluminum	#8 - 500 kcmil

Aerial Cable

Copper	#6 - 500 kcmil
--------	----------------

Terminals & Splices

Copper	#8 - 750 kcmil
Aluminum	#8 - 750 kcmil
ACSR	#4 - 556.5 kcmil

HYGROUND® (Compression Grounding)

Copper	#8 - 500 kcmil
Ground Rods	1/2" - 1" diameter

Models:

Y750BHXT	Standard Remote C-Head tool
----------	-----------------------------



Specifications:

Output Force:	12 Tons
Tool Weight:	10.8 lbs
Size:	12.80" x 5.20" x 2.90"
Die Style:	U style
Jaw Opening:	1.65"
Operating Pressure:	10,000 PSI
Warranty:	5 year limited warranty

Accessories:

PT294021:	Adjustable head grip for joining head to universal hot sticks
CASEUDIES15:	Plastic die case for U style dies Holds 15 die sets. Dies sold separately.
PT10054094:	Red Nylon Carry Bag (included with tool)

*See Hydraulic Pumps and Hydraulic Hoses;
Pump Accessories
for other necessary equipment.*

12 Ton, Remote C-Head
Remote Operated Hydraulic Tool

Tool Series: Y35BH

- Lifting eye
- .95" jaw opening
- Uses U style dies
- Positive die lock buttons

For Use On:

Copper #8 str. - 500 kcmil code cable

Grounding Terminals:

YGH, YGHA, YGF

Grounding Splices:

YGS, YGHS

Copper #8 str. - 500 kcmil and up to 3/4" ground rod

Grounding Taps:

YGHC-C, YGHP-C, YGHR-C

Copper #8 str. - 750 kcmil code cable, N30 - N500 Navy cable, flexible, and extra flex

Terminals (Bare):

YA, YA-2N, YA-L, YA-LB, YA-2LN

Terminals (Insulated):

YAEV-L, YAEV-H, YAEV-RS, YAEV-RH

Splices to 400 kcmil only:

YS, YS-T, YS-L, YS-LB, YSV-L, YSM

Aluminum #8 str. - 750 kcmil code cable

Terminals:

YA-A, AYP, AYPO

Splices to 350 kcmil only:

YSA, YRB, YS-AT

ACSR: See Overhead Transmission & Distribution
Sections H & I of the current BURNDY® Master Catalog



Specifications:

Output Force:	12 Tons
Tool Weight:	8.0 lbs
Size:	9.25" x 4.75" x 2.62"
Die Style:	U style
Jaw Opening:	.95"
Operating Pressure:	10,000 PSI
Cycles:	10,000
Warranty:	5 year limited warranty

Models:

Y35BH	Standard Remote C-Head tool
Y35H	Y35BH head, PT294021 universal hot stick adapter, and steel carrying case
Y35BH4	Permanent molded rubber head, 3/16" rubber for tool impact protection

Accessories:

PT29413:	Carry Case (included with tool)
----------	---------------------------------

*See Hydraulic Pumps and Hydraulic Hoses;
Pump Accessories
for other necessary equipment.*

11 Ton, Remote C-Head, Dieless Remote Operated Hydraulic Tool

Tool Series: Y444SBH

- New C-Head style for easy access and increased flexibility
- Dieless system with range taking capability
- Qualified on both UL and ANSI connections

For Use On:

Copper #4 - 1000 kcmil Code & Flex

Terminals: YA-L, YA-2LN, YA, YA-2N, YA-L-2TC, YAB-4N,
YA-L-TC, YA-2L, YA-4N, YAV, YAZ, YA-L-FX, YA-FXB, YAG

Splices: YS-L, YS, YS-T

Copper #4 - 1000 kcmil Code; #2 - 777 kcmil Flex

HYPLUG™: YE-P, YE-P-FX, YEV-P-FX

Aluminum #4 - 1000 kcmil

Terminals: YA-A, YA-A-TN

Splices: YS-A

HYPLUG™: AYP, AYPO

ACSR, AAC, AAAC, ACAR #4 AWG - 556.5 kcmil

Splices: YDS-RL, YDS-RLNI

Cable Pulling Heads: YCP-L

#6 AWG - 1000 kcmil (copper & aluminum)

See Expanded Range details at start of Section C.

Models:

Y444SBH Tool with male couplers
Y444SBHF Tool with female couplers

Connections are UL Listed to UL 486A-486B on
Copper and Aluminum terminals and splices

Comply with ANSI C119.4 on YDS-RL and YDS-RLNI Splices
(ACSR, AAC, AAAC, ACAR)

Qualified for use on YCP-L Compression Pulling Heads



Specifications:

Output Force:	11 Tons
Tool Weight:	10.6 lbs
Size:	13.33" x 4.75" x 2.92"
Die Style:	Dieless
Operating Pressure:	10,000 PSI
Warranty:	5 year limited warranty

Accessories:

PT10054094: Red Nylon Carry Bag (included with tool)

*See Hydraulic Pumps and Hydraulic Hoses;
Pump Accessories
for other necessary equipment.*



Unique 444S Crimp
Embossment

4-POINT® 6 Ton, Remote Latch Head, Dieless
Remote Operated Hydraulic Tool

Tool: Y81KFTMBH

- Dieless installation system
- Range taking capabilities
- Flip top design
- Incorporates Parker-type quick connect 3/8" male coupler
- 360° head rotation

For Use On:

Copper #8 - 1000 kcmil

Terminals: YA, YA-L
Splices: YS, YS-L, YS-T, Y-R

Copper Flex #8 - 646 kcmil Flex

Terminals: YA-FX, YAV, YA-L-FX
Splices: YS, YSV-FXB

Aluminum #8 - 750 kcmil

Terminals: YA-A, YA-A-TN
Splices: YS-A
HYPLUG™: AYP, AYPO

See *Expanded Range* details at start of Section C.

Models:

Y81KFTMBH Standard 4-POINT® Dieless Remote tool



Specifications:

Output Force:	6 Tons
Tool Weight:	8.5 lbs
Size:	13.88" x 5.38" x 2.00"
Die Style:	Dieless
Operating Pressure:	10,000 PSI
Warranty:	5 year limited warranty

Accessories:

PT10054094: Red Nylon Carry Bag (included with tool)

*See Hydraulic Pumps and Hydraulic Hoses;
Pump Accessories
for other necessary equipment.*

4-POINT® 6 Ton, Remote C-Head, Dieless Remote Operated Hydraulic Tool

Tool: Y4PC834MBH

- Dieless System
- Range taking capabilities
- C-shaped head design
- 360° head rotation

For Use On:

Copper

Terminals: YA, YA-L (#8-1000 kcmil)

Splices: YS-L, YS, YS-T, Y-R (#8-500 kcmil)

Copper Flex

Terminals: YA-FX, YAV, YA-L-FX (#8-777.7 Flex)

Splices: YS, YSV-FXB (#8-500 kcmil)

Aluminum

Terminals: YA-A, YA-A-TN (#8-750 kcmil)

Splices: YS-A (#8-350 kcmil)*

HYPLUG™: AYP, AYPO (#8-750 kcmil)

*1.06" barrel diameter maximum for splices due to jaw opening

See Expanded Range details at start of Section C.



Specifications:

Output Force:	6 Tons
Tool Weight:	8.4 lbs
Size:	5.50" x 4.00" x 2.00"
Die Style:	Dieless
Operating Pressure:	10,000 PSI
Warranty:	5 year limited warranty

Models:

Y4PC834MBH	Standard 4-POINT® Dieless Remote C-Head tool
------------	--

Accessories:

PT10054094:	Red Nylon Carry Bag (included with tool)
-------------	--

*See Hydraulic Pumps and Hydraulic Hoses;
Pump Accessories
for other necessary equipment.*

9 Ton, Remote Latch Head
Remote Operated Hydraulic Tool

Tool Series: Y34BH

- Molded rubber covering on head, body, and hose fittings
- Fast ram retraction
- Compact C-shaped forged head

For Use On:

Copper #4 - 500 kcmil code cable
Welding Cable: 350 kcmil
N40 to N500 Navy Cable
Flexible and Extra Flexible
#4 - 4/0 Aircraft Cable

HYLUG™ Terminals (Bare)
HYLINK™ Splices (Bare)

HYCRAB™ BURNDY® Network Connector System
Copper: #4 - 500 kcmil str.
Aluminum: #6 - 300 kcmil



Specifications:

Output Force:	9 Tons
Tool Weight:	8.0 lbs
Size:	16.75" x 3.00" x 3.00"
Die Style:	B style nest & Y34 series indenter dies
Jaw Opening:	1.5"
Operating Pressure:	10,000 PSI
Warranty:	5 year limited warranty

Models:

Y34BH 9-Ton Remote C-Head tool

*See Hydraulic Pumps and Hydraulic Hoses;
Pump Accessories for other necessary equipment.*

Installation Die Charts for Y34BH

Copper Conductor		
Installation Die		Max. Conductor
Nest	Indenter	
B4CD	Y34PR	#4 Str.
B2CD	Y34PR	#2 Str.
B1CD	Y34PR	#1 Str.
B25D	Y34PR	1/0 Str.
B26D	Y34PR	2/0 Str.
B27D	Y34PR	3/0 Str.
B28D	Y34PR	4/0 Str.
B29D	Y34PR	250 kcmil
B30D	Y34PR	300 kcmil
B31D	Y34PR	350 kcmil
No Die Req'd	Y34PR	500 kcmil

Aluminum Conductor		
Installation Die		Max. Conductor
Nest	Indenter	
B4CD	Y34PA	#6 Str.
B1CD	Y34PA	#4 Str.
B25D	Y34PA	#2 Str.
B26D	Y34PR5	#1 Str.
B27D	Y34PR5	1/0 Str.
B29D	Y34PR5	2/0 Str.
B30D	Y34PR5	3/0 Str.
B31D	Y34PR5	4/0 Str.
B32D	Y34PR5	250 kcmil
No Die Req'd	Y34PR11	300 kcmil

4.5 Ton, 6,000 PSI, Remote C-Head Remote Operated Hydraulic Tool

Tool: Y29BH

- D series nest dies and Y29 series indenter dies
- Light weight, portable design
- C-shaped head; 1.2" jaw opening
- Easy placement/removal on continuous conductor lengths

For Use On:

Copper #8 - 2/0 AWG Code/Flex

Nylon Insulated Lugs:

(Connectors meet MIL-T-7928 requirements)
YAEV-L, YAEV-H, YAEV-RS, YAEV-RH

Non-Insulated Lugs:

(Connectors meet MIL-T-7928 requirements)
YAV-L, YAV-R, YAV-RS

Copper #8 - 4/0 AWG

Non-Insulated Splices:

(Type YSV-L connectors UL Listed/CSA Certified)
YSM, YSV-L



Specifications:

Output Force:	4.5 Tons
Tool Weight:	5.0 lbs
Size:	10.75" x 3.00" x 1.25"
Die Style:	D style nest & Y29 series indenter dies
Jaw Opening:	1.15"
Operating Pressure:	6,000 PSI
Warranty:	5 year limited warranty

Models:

Y29BH	4.5-Ton, 6,000 PSI, Remote C-Head tool
-------	--

Accessories:

*See Hydraulic Pumps and Hydraulic Hoses;
Pump Accessories
for other necessary equipment.*



PT30250 metal carrying case (included with tool)

Installation Die Chart for Y29BH (Connectors meet MIL-T-7928 requirements)

Non-Insulated Connectors		Maximum Conductor	Insulated Connectors	
Nest	Indenter	Size	Nest	Indenter
DV8L1	Y29PL	#8 AWG	DEV8L	Y29PLE1
DV6L	Y29PL	#6 AWG	DEV6L	Y29PLE1
DV4L	Y29PL	#4 AWG	DEV4L	Y29PLE1
DV2L	Y29PL	#2 AWG	DEV2L	Y29PLE
DV1L	Y29PL	#1 AWG	DEV1L	Y29PLE
DV25L	Y29PL	1/0 AWG	DEV25L	Y29PLE
DV26L	Y29PL	2/0 AWG	DEV26L	Y29PLE

Y10D for Nylon & Bare

Hand-held plier tool for #22 - #10 AWG

Tool: Y10D

- One tool for both nylon insulated and bare connectors
- Precision machined wire cutter for aluminum and copper
- Heavy duty forged steel, rust resistant finish

Y1022 for Nylon, Vinyl, & Bare

Hand-held plier tool for #22 - #10 AWG

Tool: Y1022

- One step stripping #22 - #10 AWG
- Cuts common size mild steel, non-ferrous screws
- Crimps full range of Nylon, Vinyl and Bare terminals and splices

For Use On:

Y10D:

#22 - #10 AWG Nylon Insulated Terminals

Types: TN, TN-F, YAE-N, YAE-N-F, YAE-Z, YAEV, YAES,
YAES-E

#22 - #10 AWG Nylon Insulated Splices

Types: SN, YSE-HN*, SNM, YSES, YSE-H*

#22 - #10 AWG Bare Uninsulated Terminals

Types: T, YAD, T-F, YAD-F, YAV, YAV-T-F, YAV-H*, YAV-H-F*,
YAV-Z

#22 - #10 AWG Bare Uninsulated Splices

Types: YSV, YSV-H*

Y1022, All of above and also:

#22 - #10 AWG Vinyl Insulated Terminals

Types: TP, BA, TP-F, BA-EF, TP-Z, BA-EZ

#22 - #10 AWG Vinyl Insulated Splices

Types: SP, BS

*Conductor crimp only



Specifications: (Y10D)

Size:	9.75" x 5.00" x 1.00"
Weight:	13.5 oz.
Warranty:	5 year limited warranty



Specifications: (Y1022)

Size:	8.63" x 5.00" x .75"
Weight:	11 oz.
Warranty:	5 year limited warranty

Dieless, Front Load, for Ferrules

Full cycle ratchet tool for insulated / bare ferrules

Tool: YF2210FL

- Front load crimping position
- Dieless crimping without multiple grooves
- Full cycle ratchet mechanism
- Ratchet release lever

For Use On:

#22 - #10 AWG Insulated and Uninsulated (Bare) Ferrules

Types: YF, YF-UI Wire End Ferrules



Close up of YF2210FL front load ratchet tool

Specifications:

Size:	7.75" x 2.32 x 1.00"
Die Style:	Dieless
Weight:	.82 lbs
Output Force:	1,600 lbs
Warranty:	5 year limited warranty



Crimp Profile

Ratchet Tools for Ferrules

Tools covering from #32 AWG to 250 kcmil

Tool Series: YFTOOL

- Release mechanism
- Low handle force
- Ergonomic handle design
- Trapezoidal crimp profile unless noted
- For use on insulated or uninsulated ferrules

For Use On:

#32 - #6 AWG Insulated and Uninsulated (Bare) Ferrules
Tool: YF3206TOOL (Square crimp profile)

#22 - #10 AWG Insulated and Uninsulated (Bare) Ferrules
Tool: YF2210TOOL

#10 - #6 AWG Insulated and Uninsulated (Bare) Ferrules
Tool: YF1006TOOL

#8 - 1/0 AWG Insulated and Uninsulated (Bare) Ferrules
Tool: YF081/0TOOL

#4 - 1/0 AWG Insulated and Uninsulated (Bare) Ferrules
Tool: YF041/0TOOL

1/0 - 3/0 AWG Insulated and Uninsulated (Bare) Ferrules
Tool: YF1/03/0TOOL

4/0 AWG - 250 kcmil Insulated and Uninsulated (Bare) Ferrules
Tool: YF4/0250TOOL



Specifications:

Length:	Varies
Weight:	Varies from 1.02 to 1.80 lbs
Warranty:	2 year limited warranty

Full Cycle Ratchet Tool

Hand-held ratchet tool for #22 to #8 AWG

Tool: Y8MRB1

- Light weight
- Each indenter has unique identifying marks for inspectability
- Fully enclosed, protected ratchet mechanism does not allow the handles to be opened until full ratchet cycle is completed
- Inspection gauges (sold separately) available to check each groove

For Use On:

#22 - 8 AWG Uninsulated (Bare) Terminals:

Types: T, YAD, T-F, YAD-F, YAV, YAV-L, YAV-T-F, YAV-Z

#22 - 8 AWG Uninsulated (Bare) Splices:

Types: YSV, YSV-L



Specifications:

Weight:	1.2 lbs
Size:	10.56" x 3.50" x 1.04"
Die Style:	Permanent Dies
Warranty:	5 year limited warranty

Accessories:

PG3951	Inspection gauge for #18 groove
PG3961	Inspection gauge for #14 groove
PG3971	Inspection gauge for #10 groove
PG3981	Inspection gauge for #8 groove

Fully Protected Ratchet Mechanism
Full Cycle Ratchet Tools for Critical Applications

Tool Series: MR8

- Fully enclosed, protected ratchet mechanism does not allow the handles to be opened until full ratchet cycle is completed
- Designed for critical applications such as nuclear-class 1E terminations, heavy duty industrial, aircraft
- Light weight aluminum
- Easy groove identification with color-coded dies

For Use On:

MR81A: #22 - #10 AN Copper Cable
INSULUG™ terminals/splices
YAE

MR89Q: #18 - #8 AN Copper Cable
#22 - #10 AWG Sol. Cable
#22 - #8 AWG Str. Cable
YAV, YSV, T, T-F, YAD, YAD-F

MR833S1: #18 - #10 MIL-W-5086 Str.
YSE, YSE-H

MR8G96: #22 - #14
TP, BA

MR8G98: #22 - #10
YAV, T, YAD



Specifications:

Size:	10.50" x 3.50" x 1.50"
Weight:	1.5 lbs
Die Style:	Permanent Dies
Warranty:	5 year limited warranty

Ergonomic Full Cycle Ratchet Tool For #22 to #10 AWG; Nylon/Vinyl and Bare

Tool Series: MRE1022

- Ratchet mechanism does not allow handles to open until full cycle is complete
- Stop plate ensures proper location for consistent reliable connection
- Die Inspection Gauges available (sold separately)
- Easy groove identification with color coded dies
- Ratchet release lever in case of misalignment

For Use On:

MRE1022B

#22 - #10 AWG Uninsulated (Bare) Terminals/Splices
Types: T, YAD, T-F, YAD-F, YAV, YAV-H, YAV-R, YAV-T-F,
YAV-H-F, YAV-Z, YSV, YSV-H

MRE1022NV

#22 - #10 AWG Nylon & Vinyl Insulated Terminal/Splices
Types: TP, BA, TP-F, BA-EF, TP-Z, BA-EZ, TP-LF, BA-EL,
SP, BS, TN, YAES, TN-F, YAES-F, SNM*, YSES*,
YAE-N, YAE-N-F, YAE-Z, YSE-HN, YSE-H, YAEV

*Excludes #10 size



Specifications:

Weight:	1.3 lbs
Size:	10.50" x 3.00" x 1.00"
Die Style:	Permanent Dies
Warranty:	5 year limited warranty

Accessories:

PG4032R:	Die Inspection Gauge for #22 - #14 AWG for MRE1022B
PG4031R:	Die Inspection Gauge for #12 - #10 AWG for MRE1022B
PG4061:	Die Inspection Gauge for #22 - #18 AWG (Red) for MRE1022NV
PG4071:	Die Inspection Gauge for #16 - #14 AWG (Blue) for MRE1022NV
PG4081:	Die Inspection Gauge for #12 - #10 AWG (Yellow) for MRE1022NV



Close-up
MRE1022NV

Full Cycle Ratchet Hand-held Tool
For #22 to #10 AWG Terminals/Splices

Tool Series: MR

- Ratchet mechanism does not allow handles to open until full cycle is complete
- Easy groove identification with color coded dies
- Compact, narrow nose
- Comfort grip handles
- Ratchet release lever in case of misalignment

For Use On:

MR15

#22 - #10 AWG Vinyl Insulated Terminals/Splices

Types: TP, BA, TP-F, BA-EF, TP-Z, BA-EZ, TP-LF, BA-EL, SP, BS

MR18

#22 - #10 AWG Nylon Insulated Terminals/Splices

Types: TN**, TN-F, YAES, YAES-F, SN, SNM, YSE-HN, YSES

MR20

#22 - #10 AWG Uninsulated (Bare) Terminals/Splices

Types: T, YAD-F, T-F, YAV-H*, YAV, YAV-H-F*, YAD, YAV-T-F, YSV, YSV-H*

*Conductor crimps only

**Excludes #10 Size



Specifications:

Size:	8.88" x 6.00" x 2.50"
Weight:	1.1 lbs
Warranty:	5 year limited warranty

Accessories:

MR15DIESETD1:	MR15 interchangeable die set
MR18DIESETD1:	MR18 interchangeable die set
MR20DIESETD1:	MR20 interchangeable die set

Full Cycle Ratchet Hand-held Tool For #9 to #4 AWG; Bare Terminals/Splices

Tool: MR4C

- Reinforced heavy duty back with high strength aluminum body
- Fully protected ratchet mechanism does not allow handles to open until full cycle is completed
- Inspection gauges available to check each groove (sold separately)
- Spring loaded indenter jaw, keeps jaws closed

For Use On:

#9 - #4 AWG Uninsulated (Bare) Terminals/Splices

Types: YAV-L, YA-L, YSV, YS-L



Specifications:

Length:	11.75" x 3.62" x 1.00"
Weight:	2.3 lbs
Die Style:	Permanent Dies
Warranty:	5 year limited warranty

Accessories:

PG1211:	Die Inspection Gauge for #9 - #8 AWG groove
PG1251:	Die Inspection Gauge for #6 AWG groove
PG1331:	Die Inspection Gauge for #4 AWG groove

Rotating Die, Full Cycle Ratchet Tool

For #8 to #1 AWG Copper HYDENT™ Terminals/Splices and #14 to #4 Thin-Wall C-Taps

Tool Series: Y1MRTC

- Die index embossment
- Rotating die with color coding to match connectors
- Ratchet mechanism with release in case of misalignment

For Use On:

See charts for details

#8 - #1 AWG Uninsulated (Bare) Terminals and Splices

Types: YA, YAV, YS, YSV

#14 - #4 AWG Thin Wall C-Taps

YC10L12, YC8L12, YC6L12, YC4L12



Specifications:

Size: 9.88" x .75" x 2.75"
 Weight: 1.7 lbs
 Die Style: Rotating Die Wheel
 Warranty: 5 year limited warranty

Copper Terminals & Splices				
Copper Wire Size	Connector Catalog Types	Die Index # (Color)	# Crimps per Barrel Length	
			Std	Long
#8 AWG Code & Flex	YA8C- YS8C- YAV8C- YSV8C-	49 (Red)	1	2
#6 AWG Code	YA6C- YS6C-	7 (Blue)	1	2
#6 AWG Code & Flex	YAV6C- YSV6C-			
#4 AWG Code	YA4C- YS4C-	8 (Grey)	2	4
#4 AWG Code & Flex	YAV4C- YSV4C-			
#3 AWG #2 Sol.	YA3C- YS3C-	9 (White)	2	4
#2 AWG Code	YA2C- YS2C-	10 (Brown)**	2	4
# 2 AWG Code & Flex	YAV2C- YSV2C-			
#1 AWG Code	YA1C- YS1C-	11 (Green)**	2	4

**Die Index 10/Brown and 11/Green use the same die wheel crimp groove.

Copper C-Tap Connectors				
Catalog Number	Wire Size Cu Str. AWG		Die Index # (Color)	# of Crimps
	Run	Tap		
YC10L12	14 12 10	16-14 16-14 16	49 (Red)	1
YC8L12	10 8	10 12	7 (Blue)	1
YC6L12	8 6	10-8 12-10	8 (Grey)	1
YC4L12	6 5, 4	8-6 12-8	10 (Brown)	2

Models:

- Y1MRTC** Standard tool only
Y1MRKIT Y1MRTC tool, sturdy metal carrying case and select terminals/splices
Y1MRTCKIT Y1MRTC tool, sturdy metal carrying case, selected terminals and YC4L12 Thin-Wall C-Tap

Ergonomic Full Cycle Ratchet Hand-held Tool

For #12 to #2 AWG; Stranded, Solid, Flex

Tool: Y122CMR

- Overmolded comfort grip handles
- Easy groove identification with color coded dies
- UL Listed/CSA Certified connections when used with recommended BURNDY terminals/splices
- Die index embossment for all 6 wire ranges
- Emergency release mechanism in case of misalignment or mistaken die choice
- Two different kits are also available with a selection of connectors in a sturdy metal carrying case (Y122CMRKIT and Y122CMRCIKIT)



Accommodates Copper Terminals and Splices				
Copper Wire Size	Connector Catalog Types	Die Index # (Color Code)	Number of Crimps	
			Standard Barrel	Long Barrel
#10 - #12 AWG Sol. & Str.	T10-, YAD10-, YAV10, YAZ10, YAZV10-	-- (Yellow)	1	N/A
#8 AWG Code & Flex	YA8C-, YAV8C-, YAZ8C-, YAZV8C-, YS8C, YSV8C-	49 (Red)	1	2
#6 AWG Code	YA6C-, YAZ6C-, YS6C-	7 (Blue)	1	2
#6 AWG Code & Flex	YAV6C-, YAZV6C-, YSV6C-			
#4 AWG Code	YA4C-, YAZ4C-, YS4C-	8 (Gray)	2	4
#4 AWG Code & Flex	YAV4C-, YAZV4C-, YSV4C-			
#3 AWG Code & #2 AWG Sol	YA3C-, YS3C	9 (White)	2	4
#2 AWG Code	YA2C-, YAZ2C-, YS2C-	10 (Brown)	2	4
#2 AWG Code & Flex	YAV2C-, YAZV2C-, YSV2C-			

Accessories:

Die Inspection Gages are available and sold separately. See table to the right for information.

Specifications:

Catalog Number	Y122CMR
Size:	10.38" x 3.00" x 1.00"
Weight:	1.3 lbs
Die Style:	Rotating Die Wheel
Warranty:	5 year limited warranty

Copper C-Tap Connectors				
Catalog Number	Wire Size Cu Str. AWG		Die Index # (Color)	# of Crimps
	Run	Tap		
YC10L12	14	16-14	49 (Red)	1
	12	16-14		
	10	16		
YC8L12	10	10	7 (Blue)	1
	8	12		
YC6L12	8	10-8	8 (Grey)	1
	6	12-10		
YC4L12	6	8-6	10 (Brown)	2
	5, 4	12-8		

Gage Catalog Number	AWG Size	Die Index	Color Code
PG4091	#10 - #12	--	Yellow
PG4092	#8	49	Red
PG4093	#6	7	Blue
PG4094	#4	8	Gray
PG4095	#3	9	White
PG4096	#2	10	Brown

Y122CMR Tools with select connectors
For #12 to #2 AWG Stranded, Solid, and Flex

Tool Series: Y122CMR Kits

- Overmolded comfort grip handles
- Easy groove identification with color coded dies
- UL Listed/CSA Certified connections when used with recommended BURNDY terminals/splices
- Die index embossment for all 6 wire ranges
- Two kits available that include popular connectors in a sturdy metal carrying case
- **Y122CMRKIT** offers select LONG barrel connectors
- **Y122CMRCIKIT** offers select STANDARD barrel connectors



Y122CMRKIT shown

Y122CMRKIT Contents: (all connectors are LONG Barrel)		
Catalog Number	Description	Qty
Y122CMR	HYTOOL™ Full Cycle Ratchet Tool	1
Y1MRKITCASE	Metal Case for Tool and Connectors	1
YAV102TC14	#10 Sol & Str, 1/4" Stud, 2 Holes	15
YAZV10TC14	#10 Sol & Str, 1/4" Stud, 1 Hole	15
YAZV102TC14	#10 AWG, 1/4" Stud, 2 Holes	15
YAZ8CTC14	#8 AWG, 1/4" Stud, 1 Hole	15
YAZ8C2TC38	#8 AWG, 3/8" Stud, 2 Holes	15
YAZ6CTC14	#6 AWG, 1/4" Stud, 1 Hole	15
YAZ6C2TC38SL	#6 AWG, 3/8" Stud, 2 Slotted Holes	15
YAZ6C2TC14	#6 AWG, 1/4" Stud, 2 Holes	15
YAZV6C2TC14FX	#6 Code & Flex, 1/4" Stud, 2 Holes	15
YAZ6C2TC38	#6 AWG, 3/8" Stud, 2 Holes	15
YAZ4C2TC38	#4 AWG, 3/8" Stud, 2 Holes	15
YAZ3C2TC14	#3 AWG, 1/4" Stud, 2 Holes	15
YAZ3C2TC38SL	#3 AWG, 3/8" Stud, 2 Slotted Holes	15
YAZ2C2TC38	#2 AWG, 3/8" Stud, 2 Holes	15
YAZ2C2TC38SL	#2 AWG, 3/8" Stud, 2 Slotted Holes	15
YAZV2C2TC14FX	#2 Code & Flex, 1/4" Stud, 2 Holes	15
Y122CMRSOMI	Safety Operating & Maintenance Instructions	1

Accessories:

Die Inspection Gages are available and sold separately.
See Y122CMR catalog page for details.

Specifications:

Size: 18.00" x 7.50" x 2.00"
Weight: 13.7 lbs
Die Style: Rotating Die Wheel
Warranty: 5 year limited warranty

Y122CMRCIKIT Contents: (all connectors are STANDARD Barrel)		
Catalog Number	Description	Qty
Y122CMR	HYTOOL™ Full Cycle Ratchet Tool	1
Y1MRKITCASE	Metal Case for Tool and Connectors	1
YAV10T3	#10 Sol & Str, 1/4" Stud, 1 Hole	15
YA8CL	#8 AWG, #10 Stud, 1 Hole	15
YA8CL1	#8 AWG, 1/4" Stud, 1 Hole	15
YA6CL	#6 AWG, 1/4" Stud, 1 Hole	15
YAV6CLTC14FX	#6 AWG & Flex, 1/4" Stud, 1 Hole	15
YA4CL	#4 AWG, 1/4" Stud, 1 Hole	15
YAV4CLTC516FX	#4 AWG & Flex, 5/16" Stud, 1 Hole	15
YA2CL	#2 AWG, 5/16" Stud, 1 Hole	15
YAV2CLTC516FX	#2 AWG & Flex, 5/16" Stud, 1 Hole	15
YSV10	#10 Sol & Str Splice	15
YS8CL	#8 AWG Splice	15
YS6CL	#6 AWG Splice	15
YS4CL	#4 AWG Splice	15
YS2CL	#2 AWG Splice	15
Y122CMRSOMI	Safety Operating & Maintenance Instructions	1

Full Cycle Ratchet Hand-held Tool For #26 to #8 AWG Terminals/Splices

Tool: M8ND

- Ratchet mechanism does not allow handles to open until full cycle is complete
- Fully protected ratchet mechanism
- Uses standard BURNDY N style dies (sold separately)
- Easy groove identification with color coded dies

For Use On:

#26 - #8 AWG Terminals/Splices

Terminal Types: YAD, BA-E, YAD-F, BA-EF, YAE, BA-ES, YAE-F, BA-EZ, YAE-Z, BA-EL, YAES, YAEV-H, YAEV-L, YAV, YAV-F, YAV-H, YAV-H-F

Splice Types: YSV, YSM, YSV-H, YRV-L



Specifications:

Weight:	1.8 lbs
Size:	10.88" x 2.00" x .88"
Die Style:	N style
Cycles:	10,000
Warranty:	5 year limited warranty

M8ND shown with N8CT die set installed. (Dies sold separately.)

Mechanical Rotating Crimp Tool For #8 to 4/0 AWG Uninsulated (Bare) Terminals/Splices

Mechanical Rotating Crimp Tool For #8 to #4/0 AWG Uninsulated (Bare) Terminals/Splices

Tool Series: MRC840

- Heat treated steel jaws
- Spring loaded mechanism locks die wheel into position
- Multiple crimp selection with rotatable die wheels
- Die index embossment for inspectability

For Use On:

MRC840

#8 - #4/0 AWG Copper Terminals/Splices

Types: YA, YA-L, YS, YS-L

MRC840AL

#8 - #4/0 AWG Aluminum Terminals/Splices

Types: YA-A, YS-A



Specifications:

Size:	26.00" x 8.00" x 1.50"
Weight:	8.3 lbs
Die Style:	Rotating Die Wheel
Warranty:	5 year limited warranty

Mechanical Compression Tool, Dieless

#8 Str. to 250 kcmil Copper; #8 Str. to 4/0 Str. Aluminum

Tool Series: MY28 / MY29

- Easy to adjust nest die with knurled steel knob and machine threads
- Rugged tool design with heavy duty forged steel with reinforced back and handles
- Bench mount adapter (sold separately) available

For Use On:

MY293, MY293C (covered handles),

MY293CF (fully covered)

#8 Str. - 250 kcmil Copper commercial (code) cable

30 Navy - 250 Navy Copper Navy cable

#8 Str. - 4/0 Str. Aluminum commercial (code) cable

Types (Copper): YA, YA-L, YS-L

Types (Aluminum): YA-A, YS-A

MY2911, MY2911C (covered handles),

MY29UNIVERSALKIT (MY2911 tool with select connectors)

#8 Str. - 250 kcmil Copper commercial (code) cable

30 Navy - 250 Navy Copper Navy cable

#8 Str. - 4/0 Str. Flexible copper mine machine cable

Types (Copper): YA, YA-L, YS, YAV-FX, YS-L,

YAV-L, YSV-L

MY28

#8 Str. - 4/0 Str. Copper aircraft cable

Types (Copper): YAV-L, YSV-L

MY284

#8 Str. - 4/0 Str. Aluminum aircraft cable

Types (Aluminum): YAV-A-L, YSV-A-L, YAV-A-R

MY286

#8 Str. - 2/0 Str. Copper aircraft cable (flexible)

Types (Copper): Nylon Insulated: YAE-L, YAEV-RS,

YAEV-H, YAEV-RH



Specifications:

Weight:	8.0 lbs
Size:	22.65" x 4.88" x 1.12"
Die Style:	Dieless
Cycles:	10,000
Warranty:	5 year limited warranty

Accessories:

BMVBCHMT: Bench Mount Adapter

Close-up of dieless mechanism



Full Cycle Ratchet Tool, Dieless

Installs Service Entrance Splice Connectors #10 to 1/0 Str.

Tool: OH25

- Ratchet mechanism does not allow handles to open until full cycle is complete
- Easy, one-hand operation incrementally closes jaws with each handle stroke
- Spring-loaded comfort grip handles
- Forged steel jaws and stainless steel indenter

For Use On:

Conductor Range: #10 - 1/0 Str.

5/8" Service Entrance Sleeves:

INSULINK™ Type ES (insulated) #10 - 1/0 Str.

LINKIT™ Type YSU (bare) #8 - 1/0 Str.

5/8" Neutral Tension Sleeves

HYSPLICE™ Types:

YS-S, YCS-R, YDS-AT #4 - 1/0 Str.

HYPLUG™ AYP Type #6 - 1/0 Str.



Specifications:

Handle Force:	50 lbs max.
Force Developed:	6,000 lbs max.
Size:	12.25" x 3.75" x 1.50"
Weight:	2 lbs. 11 oz.
Die Style:	Dieless
Warranty:	5 year limited warranty

Accessories:

PT4583:	Leather Holster
PT8504:	Go/No-Go Gauge; used to check crimp dimensions



PT4583 Leather Holster
(sold separately; shown with
OH25 tool)

POPPER™ HYTOOL™ Full Cycle Ratchet Overhead/Underground Applications

Tool: OUR840

- Allows proper crimping of sleeves/terminations in underground applications
- Uses X dies for reduced handle force and W dies for fewer number of crimps
- UL Listed connections when used with BURNDY Listed connectors and color-coded X dies



For Use On:

See charts for details

Selected Applications:

Copper conductors #8 AWG - 250 kcmil
Aluminum conductors #8 AWG to 4/0 AWG

Specifications:

Handle Force:	8 lbs max.
Force Developed:	8,000 lbs max.
Die Style:	W and X style dies
Size:	13.00" x 3.75" x 1.50"
Weight:	2 lbs. 14 oz.
Warranty:	5 year limited warranty

Accessories:

XOH25:	Nest/Indenter die set for OUR840
W28K:	Cutter die for #4 - 4/0 ACSR, Copper, Aluminum
PT4583:	Leather Holster made from top grain cowhide saddle leather with large grommet
OUR840WC:	Metal carrying case with die tray - holds OUR840 tool and up to eleven (11) X dies (sold separately)

Copper Terminals & Splices

Copper Wire Size	Connector Catalog Types	Die	Die Index # (Color)	# Crimps per Barrel Length	
				Std	Long
#8 AWG Str.	YA / YS 8C-	X8CRT	49 (Red)	1	2
#6 AWG Str. #5 AWG Str.	YA / YS 6C-, YA / YS 5C-	X5CRT	7 (Blue)	1	2
#4 AWG Str.	YA / YS 4C-	X4CRT	8 (Gray)	1	2
#2 AWG Str.	YA / YS 2C-	X2CRT	10 (Brown)	1	2
#1 AWG Str.	YA / YS 1C-	X1CRT	11 (Green)	1	2
1/0 AWG Str.	YA / YS 25-	X25RT	12 (Pink)	2	4
2/0 AWG Str.	YA / YS 26-	X26RT	13 (Black)	2	4
3/0 AWG Str.	YA / YS 27-	X27RT	14 (Orange)	3	6
4/0 AWG Str.	YA / YS 28-	X28RT	15 (Purple)	3	6
250 kcmil	YA / YS 29-	X29RT	16 (Yellow)	4	8

Aluminum Terminals & Splices

Aluminum Wire Size	Connector Catalog Types	Die	Die Index # (Color)	# Crimps
#8 AWG Str.	YA / YS 8CA	X8CART	374 (Blue)	2
#6 AWG Str.	YA / YS 6CA-	X6CART	346 (Gray)	2
#4 AWG Str.	YA / YS 4CA-	X4CART	375 (Green)	3
#2 AWG Str.	YA / YS 2CA-	X2CART	348 (Pink)	4
#1 AWG Str.	YA / YS 1CA-	X1CART	471 (Gold)	3
1/0 AWG Str.	YA / YS 25A-	X25ART	296 (Tan)	4
2/0 AWG Str.	YA / YS 26A-	X26ART	297 (Olive)	4
3/0 AWG Str.	YA / YS 27A-	X27ART	467 (Ruby)	4
4/0 AWG Str.	YA / YS 28A-	X28ART	298 (White)	6

HYTOOL™ Hand-Operated Crimper

Installs full range of connectors #14 AWG to 500 kcmil

Tool Series: MD6

- Uses W & X style dies
- Spring loaded positive lock die retainer buttons
- Multiple models available

For Use On:

Copper, Aluminum, ACSR, Steel, Copperweld, Alumoweld, 6201, 5005, Compressed, and Compact Conductors

Taps:

Copper: #10 sol. to 2/0 str.

Aluminum & ACSR: #14 sol. to 4/0 ACSR

Stirrups:

#6 to 4/0 ACSR

Overhead Full Tension Deadends, Full Tension Splices and Terminals:

#10 str. to 4/0 ACSR

Terminals & Splices*:

#8 to 500 kcmil Copper Stranded (YA, YA-L, YS, YS-L)

#8 to 350 kcmil Copper Flex

#8 to 350 kcmil Aluminum (YA-A, YS-A)

* NOTE: Sizes 250-500 kcmil are not recommended with MD6 & MD7 Series due to high handle force. Suggest PATMD-LW Series.

Models:

MD6	Permanent BG (5/8) and D3 grooves; with WO die (sold separately) can install the CABLELOK CRIMPIT™ and HYCRIMP™ tap connectors
MD68	Permanent O and D3 grooves; with WBG die (sold separately) can install the CABLELOK CRIMPIT™ and HYCRIMP™ tap connectors
MD66	Snub-nose, permanent D3 groove only
MD637	Permanent 161, 162, 163, 171 dies in jaw (J, M & P, T & X)
MD638	Permanent K, BG, C dies in jaw



Specifications:

Crimp Force:	4.5 Tons
Life Cycle:	Tested over 90,000 cycles with no adjustments or part replacement
Length:	25.50" x 4.50" x 2.00"
Weight:	6.0 lbs
Die Style:	W and X styles
Warranty:	5 year limited warranty

Models (continued):

MD64	Permanent BG (5/8) and D3 grooves; straight fiberglass handles 24" long; fiberglass rated 100kV per foot for 5 min.
MD614	Permanent BG (5/8) and D3 grooves; straight fiberglass handles 19" long with grips; fiberglass rated 100kV per foot for 5 min.
MD612	Permanent O and D3 grooves; straight fiberglass handles 24" long; fiberglass rated 100kV per foot for 5 min.

Accessories:

WBG:	Common die set for MD68, MD612
WO:	Common die set for MD6, MD64, MD614
WDIETREE:	W die holder for 6 die sets

HYTOOL™ Hand-Operated Crimper

Installs full range of connectors #14 AWG to 500 kcmil

Tool Series: MD7

- Uses W & X style dies
- Ergonomic, one-piece composite polymer handles
- Nickel plated jaws and jaw links

For Use On:

Copper, Aluminum, ACSR, Steel, Copperweld, Alumoweld, 6201, 5005, Compressed, and Compact Conductors

Taps:

Copper: #10 sol. to 2/0 str.

Aluminum & ACSR: #14 sol. to 4/0 ACSR

Stirrups:

#6 to 4/0 ACSR

Overhead Full Tension Deadends, Full Tension Splices and Terminals:

#10 str. to 4/0 ACSR

Terminals & Splices*:

#8 to 500 kcmil Copper Stranded (YA, YA-L, YS, YS-L)

#8 to 350 kcmil Copper Flex

#8 to 350 kcmil Aluminum (YA-A, YS-A)

* NOTE: Sizes 250-500 kcmil are not recommended with MD6 & MD7 Series due to high handle force. Suggest PATMD-LW Series.



Specifications:

Output Force:	4.5 Tons
Size:	25.00" x 4.50" x 2.00"
Weight:	7.0 lbs.
Die Style:	W and X styles
Life Cycle:	Tested over 90,000 cycles with no adjustments or part replacement
Warranty:	5 year limited warranty

Models:

MD7	Permanent BG (5/8) and D3 grooves; with WO die (sold separately) can install the CABLELOK CRIMPIT™ and HYCRIMP™ tap connectors
MD78	Permanent O and D3 grooves; with WBG die (sold separately) can install the CABLELOK CRIMPIT™ and HYCRIMP™ tap connectors
MD76	Snub-nose, permanent D3 groove only

Accessories:

WBG:	Common die set for MD78
WO:	Common die set for MD7, MD76
WDIETREE:	W die holder for 6 die sets

POSI-PRESS™ Hand-Operated Crimper
Hand-operated Full Cycle Ratchet Tool

Tool Series: MD7 Ratchet

- Full stroke ratchet mechanism
- Ergonomical one-piece composite polymer handles
- Uses W & X style dies

For Use On:

Copper Lugs/Splices #8 - 500 kcmil:

Types: YA, YA-L, YA-L-TC, YA-L-NT, YS-L, YS, YST, YA-TC

Copper Lugs/Splices #8 - 350 kcmil Flex

Types: YAV-L-TC-FX, YA-LB, YA-TC-FXB, YSV-L, YAV-L-NT-FX, YAV-L-FX, YAV-FXB

Copper Battery Lugs #8 - 350 kcmil Flex

Type: YAG-TC-LD

Thin Wall C-Taps #12 - 3/0 AWG

Type: YC-L

Models:

MD734R	POSI-PRESS™ Full Cycle Ratchet Tool
MD734RC	MD734R tool with EPDM rubber covering
MD734RKIT1	MD734R tool, metal carrying case and all dies for #8 - 500 kcmil copper HYDENT™ and C-Taps for #12 - 3/0 AWG
MD734	Supplied <u>without</u> the ratchet mechanism
MD734KIT1	MD734 tool (no ratchet mechanism), metal carrying case and all dies for #8 - 500 kcmil copper HYDENT™ and C-Taps for #12 - 3/0 AWG



Specifications:

Crimp Force:	4.5 Tons
Length:	26.00" x 4.50" x 2.00"
Width:	8.00" at handles; 4.50" at jaws
Die Style:	W and X styles
Handle Material:	Reinforced composite polymer
Warranty:	5 year limited warranty

Accessories:

PT49521:	Metal carry case (sold separately)
PT4925:	Canvas bag (sold separately)
WDIETREE:	W die holder for 6 sets of dies (sold separately)

OEM Pneumatic Press

Installs #8 to 4/0 AWG

Tool: OEM840NCP

- Customizable clear safety guard for left, right, or front feed cable entry
- Guarded foot switch
- Adjustable connector locator
- Cycle counter
- Accommodates UM, U and W dies
- Testing for UL Listing performed up to:
 - U dies: UL Listed to 1/0 AWG (YA-L), #2 AWG (YAV-L)
 - W dies: UL Listed to 3/0 AWG (YA-L), 1/0 AWG (YAV-L)

Models:

OEM840NCP OEM Pneumatic Press (press only*)

*Requires U / UM or W Die Holder Assembly for use. Sold separately, see below.

Accessories:

PT50024685: U / UM Die Holder Assembly (sold separately)

PT50024683: W Die Holder Assembly (sold separately)

PT50024605: Front Safety Guard

See Connector and Die Selection Matrix below
all dies, nest and indenters are sold separately



Specifications:

Weight:	60.0 lbs
Size:	22.75" x 12.38" x 10.25" (18.56" L with air gauge)
Die Style:	UM, U, W Styles
Crimp Speed:	3 seconds (approximately)
Life Cycles:	2.5 M cycles (min)
Air Pressure:	90-100 PSI
Connector Port:	3/8" NPT female thread
Warranty:	2 year limited warranty

Connector and Die Selection Matrix

Wire Size	YAD-M Connectors*		YA and YA-L Connectors		YAV and YAV-L Connectors	
	UM Dies (DLO Copper)		U Dies (Code)	W Dies (Code)	U Dies (Code)	W Dies (Code)
	Indenter	Nest	Copper	Copper	Copper	Copper
#8 AWG	UMA	UM8CN	U8CRT	W8CRT	U8CRT	W8CRT
#6 AWG	UMB	UM6CN	U6CRT	W6CRT	U6CRT	W6CRT
#4 AWG	UMB	UM4CN	U4CRT	W4CRT	U4CRT	W4CRT
#2 AWG	UMB	UM2CN	U2CRT	W2CRT	U2CRT	W2CRT
1/0 AWG	UMC	UM25N	U25RT	W25RT	U25RT*	W25RT
2/0 AWG	UMC	UM26N	U26RT*	W26RT	U26RT*	W26RT*
3/0 AWG	UMC	UM27N	U27RT*	W27RT	U27RT*	W27RT*
4/0 AWG	UMC	UM28N	U28RT*	W28RT*	U28RT*	W28RT*

* Not UL Listed



UM Nest/Indenter



UM Crimped Terminal

Pneumatic Bench Top Press
Terminates Small Terminals on Mylar Tape (#22-#10 AWG)

Tool: OEM175TFM

- Auto feed mechanism; High volume crimping
- 2-stage ram for accurate conductor placement
- Foot actuated pedal included
- Clear plastic safety guard with interlock switch to prevent access into crimp area during operation
- Quick change over
- Emergency release switch



For Use On:

#22 - #10 AWG Small HYDENT™ Ring and Fork Tongue Terminals on Mylar Tape Reels
Bare (non-insulated)
requires TFM2214B & TFM1210B dies*
Vinyl and Nylon Insulated
requires TFM2218NV, TFM1614NV & TFM1210NV dies*

*Dies sold separately

Specifications:

Weight: 58 lbs
Size: 36" W x 24" D x 20" H
Die Style: TFM-B, TFM-NV Styles (sold separately)
Air Pressure: 90 - 100 PSI
Warranty: 2 year limited warranty

Current Terminals Available on Mylar Tape Reels (others may be available upon request)

Wire Size	Stud Size	Rings			Standard Forks			Locking Forks	Flanged Forks	
		Non-Insulated	Vinyl	Nylon	Non-Insulated	Vinyl	Nylon	Vinyl	Vinyl	Nylon
#22 - #16	2			YAE18N27M		BA16EF2M			BA16EZ2M	YAE18Z1M
	4	YAD184M	BA16E4M	YAE18N26M						
	6	YAD186M	BA16E6M	YAE18N21M	YAD186FM	BA16EF6M	YAE18G43FM	BA16EL6M	BA16EZ6M	YAE18Z2M
	8	YAD188M	BA16E8M	YAE18N1M		BA16EF8M	YAE18N57FM	BA16EL8M	BA16EZ8M	YAE18Z3M
	10	YAD1810M	BA16E10M	YAE18NM		BA16EF10M		BA16EL10M	BA16EZ10M	YAE18Z4M
	1/4	YAD1814M	BA16E14M	YAE18N2M						
	5/16			YAE18N3M						
#16 - #14	6	YAD146M	BA14E6M	YAE14N43M	YAD146FM		YAE14N76FM	BA14EL6M	BA14EZ6M	YAE14Z2M
	8	YAD148M	BA14E8M	YAE14N1M		BA14EF8M	YAE14N77FM	BA14EL8M	BA14EZ8M	YAE14Z3M
	10	YAD1410M	BA14E10M			BA14EF10M	YAE14N78FM	BA14EL10M	BA14EZ10M	YAE14Z4M
	1/4	YAD1414M	BA14E14M	YAE14N2M						
	5/16		BA14E516M	YAE14N3M						
#10 - #12	6	YAD106M	BA10E6M	YAE10N5M	YAD106FM	BA10EF6M		BA10EL6M		YAE12Z2M♦
	8	YAD108M	BA10E8M	YAE10N11M	YAD108FM	BA10EF8M		BA10EL8M	BA10EZ8M	YAE12Z3M♦
	10	YAD1010M	BA10E10M	YAE10NM	YAD1010FM	BA10EF10M		BA10EL10M	BA10EZ10M	YAE12Z4M♦
	1/4	YAD1014M	BA10E14M	YAE10N3M	YAD1014FM					
	5/16	YAD10516M		YAE10N2M						
	3/8	YAD1038M								

♦ Wire Size #14 - #12

DIE PROFILES

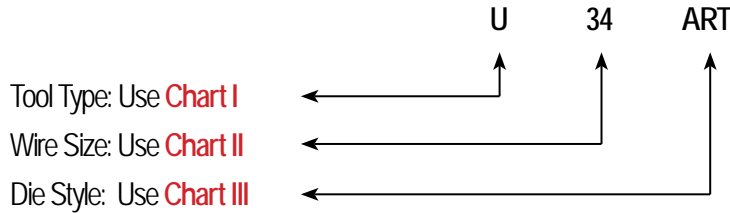
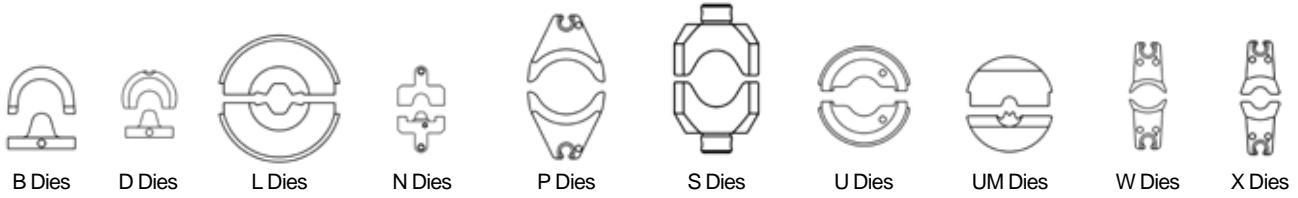


CHART I - Tool Type

B = Y34BH	U = 35 and 750 Series, 46 Series w/PUADP1 U-die Adapter
D = Y29BH	
L = 60 Series	UM = OEM840NCP, 750 Series, 46 Series w/PUADP1 U-die Adapter
N = M8ND	
P = 46 Series	W = MD and PATMD Series, PAT500SJ, PAT600
S = Y45	X = MD6 and MD7 Series, OUR840

CHART II - Wire Size

12 = #12 AWG	27 = 3/0
10 = #10 AWG	28 = 4/0
8C = #8 AWG	29 = 250 kcmil
6C = #6 AWG	30 = 300 kcmil
5C = #5 AWG	31 = 350 kcmil
4C = #4 AWG	32 = 400 kcmil
3C = #3 AWG	34 = 500 kcmil
2C = #2 AWG	36 = 600 kcmil
1C = #1 AWG	39 = 750 kcmil
25 = 1/0	44 = 1000 kcmil
26 = 2/0	

Or INDEX NUMBER: Example U312 = **312** Die Index

CHART III - Die Style

- A** = Aluminum
- R** = Round (circumferential)
- T** = Twin Die (both halves)

60 Ton Dies
HPS/Fargo-equivalent Dies; CD Index, Circumferential



BURNDY Die Catalog Number	Conductor Code Name	Conductor Size	Typical HPS/Fargo Connectors	
			UNI-GRIP® Splice	UNI-GRIP® Deadend
07CD60	Peony	300.0 AAC	C150707	C010707
	Tulip	336.4 AAC	C150707	C010707
	Daffodil	350.0 AAC	C150707	C010707
	no name (0.595-0.680 dia.)	281.4-312.8 AAAC	AB150707	AB010707
	Owl	266.8 ACSR 6/7 Str.	A150709	A010709
	Partridge	266.8 ACSR 26/7 Str.	A150710	A010710
08CD60	Canna	397.5 AAC	C150808	C010808
	Four-O'Clock	400.0 AAC	C150808	C010808
	no name (0.681-0.765 dia.)	394.5-419.6 AAAC	AB150808	AB010808
	Ostrich	300.0 ACSR 26/7 Str.	A150811	A010811
	Merlin	336.4 ACSR 18/1 Str.	A150812	A010812
	Linnet	336.4 ACSR 26/7 Str.	A150813	A010813
09CD60	Chickadee	397.5 ACSR 18/1 Str.	A150815	A010815
	Goldentuft	450.0 AAC	C150909	C010909
	Yarrow	450.0 AAC	C150909	C010909
	Cosmos	477.0 AAC	C150909	C010909
	Syringa	477.0 AAC	C150909	C010909
	Zinnia	500.0 AAC	C150909	C010909
	Hyacinth	500.0 AAC	C150909	C010909
	Ganzania	550.0 AAC	C150909	C010909
	no name (0.772-0.855 dia.)	465.4-503.6 AAAC	AB150909	AB010909
	Oriole	336.4 ACSR 30/7 Str.	A150914	A010914
	Brant	397.5 ACSR 24/7 Str.	A150916	A010916
	Ibis	397.5 ACSR 26/7	A150917	A010917
10CD60	Pelican	477.0 ACSR 18/1 Str.	A150919	A010919
	Flicker	477.0 ACSR 24/7 Str.	A150920	A010920
	Dahlia	556.5 AAC	C151010	C011010
	Mistletoe	556.5 AAC	C151010	C011010
	Meadowsweet	600.0 AAC	C151010	C011010
	Orchid	636.0 AAC	C151010	C011010
	Heuchera	650.0 AAC	C151010	C011010
no name (0.856-0.950 dia.)	545.0-657.3 AAAC	AB151010	AB011010	
Hawk	477.0 ACSR 26/7 Str.	A1510211	A0110211	

60 Ton Dies

HPS/Fargo-equivalent Dies; CD Index, Circumferential
(Continued)



BURNDY Die Catalog Number	Conductor Code Name	Conductor Size	Typical HPS/Fargo Connectors	
			UNI-GRIP® Splice	UNI-GRIP® Deadend
10CD60 (Continued)	Osprey	556.5 ACSR 18/1 Str.	A151023	A011023
	Parakeet	556.5 ACSR 24/7 Str.	A151024	A011024
	Dove	556.5 ACSR 26/7 Str.	A151025	A011025
	Swift	636.0 ACSR 36/1 Str.	A151030	A010030
	Kingbird	636.0 ACSR 18/1 Str.	A151031	A010031
11CD60	Verbena	700.0 AAC	C151111	C011111
	Flag	700.0 AAC	C151111	C011111
	Violet	715.5 AAC	C151111	C011111
	Nasturtium	715.5 AAC	C151111	C011111
	Petunia	750.0 AAC	C151111	C011111
	Cattail	750.0 AAC	C151111	C011111
	Arbutus	795.0 AAC	C151111	C011111
	Lilac	795.0 AAC	C151111	C011111
	Fuchsia	800.0 AAC	C151111	C011111
	Heliotope	800.0 AAC	C151111	C011111
	no name (0.940-1.036 dia.)	739.8-740.8 AAAC	AB151111	AB011111
	Hen	477.0 ACSR 30/7 Str.	A151122	A011122
	Eagle	556.5 ACSR 30/7 Str.	A151126	A011126
	Peacock	605.0 ACSR 24/7 Str.	A151127	A011127
	Squab	605.0 ACSR 26/7 Str.	A151128	A011128
	Rook	636.0 ACSR 24/7 Str.	A151132	A011132
	Grosbeak	636.0 ACSR 26/7 Str.	A151133	A011133
	Flamingo	666.6 ACSR 24/7 Str.	A151136	A011136
	Gannett	666.6 ACSR 26/7 Str.	A151137	A011137
	Stilt	715.5 ACSR 24/7 Str.	A151138	A011138
Coot	795.0 ACSR 36/1 Str.	A151141	A011141	
12CD60	Anemone	874.5 AAC	C151212	C011212
	Crocus	874.5 AAC	C151212	C011212
	Cockscomb	900.0 AAC	C151212	C011212
	Snapdragon	900.0 AAC	C151212	C011212
	Magnolia	954.0 AAC	C151212	C011212
	Goldenrod	954.0 AAC	C151212	C011212
	no name (1.026-1.131 dia.)	833.6-932.6 AAAC	AB151212	AB011212
	Teal	605.0 ACSR 30/19 Str.	A151229	A011229
	Egret	636.0 ACSR 30/19 Str.	A151234	A011234

60 Ton Dies

HPS/Fargo-equivalent Dies; CD Index, Circumferential
(Continued)



BURNDY Die Catalog Number	Conductor Code Name	Conductor Size	Typical HPS/Fargo Connectors	
			UNI-GRIP® Splice	UNI-GRIP® Deadend
12CD60 (continued)	Starling	715.5 ACSR 26/7 Str.	A151239	A011239
	Tern	795.0 ACSR 45/7 Str.	A151242	A011242
	Cuckoo	795.0 ACSR 24/7 Str.	A151243	A0112431
	Condor	795.0 ACSR 54/7 Str.	A1512441	A0112441
	Drake	795.0 ACSR 26/7 Str.	A1512451	A0112451
	Ruddy	900.0 ACSR 45/7	A151247	A011247
	Catbird	954.0 ACSR 36/1 Str.	A151249	A011249
13CD60	Hawkweed	1000.0 AAC 37 Str.	C151313	C011313
	Camelia	1000.0 AAC 61 Str.	C151313	C011313
	Bluebell	1033.5 AAC 37 Str.	C151313	C011313
	Larkspur	1033.5 AAC 61 Str.	C151313	C011313
	Marigold	1113.0 AAC 61 Str.	C151313	C011313
	no name (1.140-1.235 dia.)	1000.0-1127.0 AAAC	AB151313	AB011313
	Mallard	795.0 ACSR 30/19 Str.	A151346	A011346
	Canary	900.0 ACSR 54/7 Str.	A151348	A011348
	Rail	954.0 ACSR 45/7 Str.	A151350	A011350
	Cardinal	954.0 ACSR 54/7 Str.	A1513511	A011351
	Ortolan	1033.5 ACSR 45/7 Str.	A151353	A011353
14CD60	Hawthorn	1192.5 AAC 61 Str.	C151414	C011414
	Narcissus	1272.0 AAC 61 Str.	C151414	C011414
	no name (1.236-1.330 dia.)	1172.0-1300.0 AAAC	AB151414	AB011414
	Curlew	1033.5 ACSR 54/7 Str.	A151454	A011454
	Bluejay	1113.0 ACSR 45/7 Str.	A151455	A011455
	Finch	1113.0 ACSR 54/19 Str.	A151456	A011456
	Bunting	1192.5 ACSR 45/7 Str.	A151457	A011457
15CD60	Columbine	1351.5 AAC 61 Str.	AC151515	AC011515
	Carnation	1431.0 AAC 61 Str.	AC151515	AC011515
	Gladiolus	1510.5 AAC 61 Str.	AC151515	AC011515
	no name (1.331-1.425 dia.)	1361.0-1500.0 AAAC	AB151315	AB011515
	Grackle	1192.5 ACSR 54/19 Str.	A151558	A011558
	Bittern	1272.0 ACSR 45/7 Str.	A1515591	A0115591
	Pheasant	1272.0 ACSR 54/19 Str.	A151560	A011560
	Dipper	1351.5 ACSR 45/7 Str.	A151561	A011561
	Martin	1351.5 ACSR 54/19 Str.	A151562	A011562

60 Ton Dies

HPS/Fargo-equivalent Dies; CD Index, Circumferential
(Continued)



BURNDY Die Catalog Number	Conductor Code Name	Conductor Size	Typical HPS/Fargo Connectors	
			UNI-GRIP® Splice	UNI-GRIP® Deadend
16CD60	Coreopsis	1590.0 AAC 61 Str.	C151616	C011616
	Dogwood	1590.0 AAC 91 Str.	C151616	C011616
	no name (1.426-1.520 dia.)	1534.0-1703.0 AAAC	AB151616	AB011616
	Bobolink	1431.0 ACSR 45/7 Str.	A151663	A011663
	Lapwing	1590.0 ACSR 45/7 Str.	A151667	A011667
17CD60	Jessamine	1750.0 AAC 61 Str.	C151717	C011717
	Falcon	1590.0 ACSR 54/19 Str.	A1517681	A0117681
	Chukar	1780.0 ACSR 84/19 Str.	A151769	A011769
	Seahawk	1869.0 ACSR 68/7 Str.	A151770	A011717



Top: close up of marking on Fargo splice requiring 12CD die index.

Bottom: Fargo splice requiring 12CD die index.



60 Ton Dies

HPS/Fargo-equivalent Dies

SH Index, Hexagonal

AH Index, Hexagonal



Two Die Sets Required (sold separately)		Conductor Code Name	Conductor Size	Typical HPS/Fargo Connectors	
BURNDY Catalog # Aluminum Die	BURNDY Catalog # Steel Die			2-Die Splice	2-Die Deadend
75AH60	75SH60	Pigeon	3/0 ACSR 6/1 Str.	TJA7829	SEDA7829
76AH60	75SH60	Penguin	4/0 ACSR 6/1 Str.	TJA7929	SEDA7929
	74SH60	Waxwing	266.8 ACSR 18/1 Str.	TJA1102	SEDA1102
20AH60	74SH60	Merlin	336.4 ACSR 18/1 Str.	TJA1302	SEDA1302
	74SH60	Chickadee	397.5 ACSR 18/1 Str.	TJA1502	SEDA1502
	10SH60	Ostrich	300.0 26/7 Str.	TJA1209	SEDA1209
	10SH60	Linnet	336.4 ACSR 26/7 Str.	TJA1309	SEDA1309
	10SH60	Oriole	336.4 ACSR 30/7 Str.	TJA1313	SEDA1313
	10SH60	Brant	397.5 ACSR 24/7 Str.	TJA1508	SEDA1508
	10SH60	Ibis	397.5 ACSR 26/7 Str.	TJA1509	SEDA1509
	12SH60	Lark	397.5 ACSR 30/7 Str.	TJA1513	SEDA1513
24AH60	75SH60	Pelican	477.0 ACSR 18/1 Str.	TJA1802	SEDA1802
	75SH60	Osprey	556.5 ACSR 18/1 Str.	TJA2202	SEDA2202
	10SH60	Flicker	477.0 ACSR 24/7 Str.	TJA1808	SEDA1808
	10SH60	Parakeet	556.5 ACSR 24/7 Str.	TJA2208	SEDA2208
	12SH60	Hawk	477.0 ACSR 26/7 Str.	TJA1809	SEDA1809
	12SH60	Hen	477.0 ACSR 30/7 Str.	TJA1813	SEDA1813
	12SH60	Dove	556.5 ACSR 26/7 Str.	TJA2209	SEDA2209
27AH60	12SH60	Peacock	605.0 ACSR 24/7 Str.	TJA2408	SEDA2408
	12SH60	Squab	605.0 ACSR 26/2 Str.	TJA2409	SEDA2409
	12SH60	Rook	636.0 ACSR 24/7 Str.	TJA2508	SEDA2508
	12SH60	Grosbeak	636.0 ACSR 26/7 Str.	TJA2509	SEDA2509
	12SH60	Flamingo	666.6 ACSR 24/7 Str.	TJA2808	SEDA2808
	12SH60	Gannet	666.6 ACSR 26/7 Str.	TJA2809	SEDA2809
	14SH60	Eagle	556.5 ACSR 30/7 Str.	TJA2213	SEDA2213
	14SH60	Wood Duck	605.0 ACSR 30/7 Str.	TJA2413	SEDA2413
	14SH60	Teal	605.0 ACSR 30/19 Str.	TJA2417	SEDA2417
	14SH60	Scoter	636.0 ACSR 30/7 Str.	TJA2513	SEDA2513
	14SH60	Egret	636.0 ACSR 30/19 Str.	TJA2517	SEDA2517
30AH60	10SH60	Tern	795.0 ACSR 45/7 Str.	TJA3318	SEDA3318
	10SH60	Ruddy	900.0 ACSR 45/7 Str.	TJA3818	SEDA3818
	10SH60	Rail	954.0 ACSR 45/7 Str.	TJA4118	SEDA4118
	12SH60	Stilt	715.5 ACSR 24/7 Str.	TJA3008	SEDA3008
	12SH60	Cuckoo	795.0 ACSR 24/7 Str.	TJA3308	SEDA3308

60 Ton Dies

HPS/Fargo-equivalent Dies

SH Index, Hexagonal

AH Index, Hexagonal

(Continued)



Two Die Sets Required (sold separately)		Conductor Code Name	Conductor Size	Typical HPS/Fargo Connectors	
BURNDY Catalog # Aluminum Die	BURNDY Catalog # Steel Die			2-Die Splice	2-Die Deadend
30AH60 (Continued)	12SH60	Condor	795.0 ACSR 54/7 Str.	TJA3321	SEDA3321
	12SH60	Crane	874.5 ACSR 54/7 Str.	TJA3721	SEDA3721
	14SH60	Starling	715.5 ACSR 26/7 Str.	TJA3009	SEDA3009
	14SH60	Drake	795.0 ACSR 26/7 Str.	TJA3309	SEDA3309
	14SH60	Canary	900.0 ACSR 54/7 Str.	TJA3821	SEDA3821
	14SH60	Towhee	954.0 ACSR 48/7 Str.	TJA4119	SEDA4119
	14SH60	Cardinal	954.0 ACSR 54/7 Str.	TJA4121	SEDA4121
	16SH60	Redwing	715.5 ACSR 30/19 Str.	TJA3017	SEDA3017
	16SH60	Mallard	795.0 ACSR 30/19 Str.	TJA3317	SEDA3317
34AH60	10SH60	Ortolan	1033.5 ACSR 45/7 Str.	TJA4418	SEDA4418
	12SH60	Bluejay	1113.0 ACSR 45/7 Str.	TJA4718	SEDA4718
	12SH60	Bunting	1192.5 ACSR 45/7 Str.	TJA4918	SEDA4918
	14SH60	Curlew	1033.5 ACSR 54/7 Str.	TJA4421	SEDA4421
	14SH60	Finch	1113.0 ACSR 54/19 Str.	TJA4724	SEDA4724
36AH60	12SH60	Bittern	1272.0 ACSR 45/7 Str.	TJA5118	SEDA5118
	12SH60	Dipper	1351.5 ACSR 45/7 Str.	TJA5218	SEDA5218
	12SH60	Bobolink	1431.0 ACSR 45/7 Str.	TJA5418	SEDA5418
	14SH60	Grackle	1192.5 ACSR 54/19 Str.	TJA4924	SEDA4924
	16SH60	Pheasant	1272.0 ACSR 54/19 Str.	TJA5124	SEDA5124
38AH60	16SH60	Martin	1351.5 54/19 Str.	TJA5224	SEDA5224
	16SH60	Plover	1431.0 54/19 Str.	TJA5424	SEDA5424
	12SH60	Nuthatch	1510.5 45/7 Str.	TJA5618	SEDA5618
40AH60	16SH60	Parrot	1510.5 54/19 Str.	TJA5624	SEDA5624
	12SH60	Lapwing	1590.0 45/7 Str.	TJA5718	SEDA5718



Above: close up of marking on Fargo splice requiring 14SH die index.



Left: Fargo splice requiring 30AH die index.

12 Ton U Dies*
For 35 and 750 Tool Series;
46 Series with PUADP1 Adapter

* Non-tension U-type 12 ton dies for YA, YS, YA-A, YS-A style connectors

** Wide dies are intended for use on long barrel terminals and splices (YA/YS) only.

Die Sets sold separately; U Die Kits also available; see following page

Note: N/A = not applicable



U28RT Die Set

Wire Size	Copper	Copper Wide Die**	Aluminum
#8 AWG	U8CRT	U8CRTW	U8CABT
#6 AWG	U5CRT	U5CRTW	U6CABT
#4 AWG	U4CRT	U4CRTW	U4CABT
#3 AWG	U3CRT	U3CRTW	N/A
#2 AWG	U2CRT	U2CRTW	U2CABT
#1 AWG	U1CRT1	U1CRT1W	U1CART
1/0 AWG	U25RT	U25RTW	U25ART
2/0 AWG	U26RT	U26RTW	U26ART
3/0 AWG	U27RT	U27RTW	U27ART
4/0 AWG	U28RT	U28RTW	U28ART
250 kcmil	U29RT	N/A	U29ART
300 kcmil	U30RT		U30ART
350 kcmil	U31RT		U31ART
400 kcmil	U32RT		U32ART
500 kcmil	U34RT		U34ART
535 Flex	U38XRT		N/A
600 kcmil	U36RT		U36ART
750 kcmil	U39RT		U39ART2
777 Flex	U44XRT		N/A



U4CRTW Wide Die Set



CASEUDIES15 die box is available (sold separately) holding up to 15 "U" style (standard or wide) die sets; dies not included.

12 Ton U Die Kits

For 35 and 750 Tool Series;
46 Series with PUADP1 Adapter

UDIEKITCU and **UDIEKITAL** include 15 sets of “U” dies and die case. These stainless steel color coded dies are for crimping YA, YS, YA-A, and YS-A types of connectors, ranging from #6 AWG through 750 kcmil.

UDIEKITCUW includes 9 sets of wide stainless steel color coded dies for crimping long barrel YA and YS types of connectors up to 4/0 AWG. The wide dies require only one crimp compared to 2 for the standard width dies.

Note: N/A = not applicable

UDIEKITHYGRD



Wire Size	UDIEKITCU includes	UDIEKITCUW includes	UDIEKITAL includes
#8 AWG	N/A	U8CRTW	N/A
#6 AWG	U5CRT	U5CRTW	U6CABT
#4 AWG	U4CRT	U4CRTW	U4CABT
#2 AWG	U2CRT	U2CRTW	U2CABT
#1 AWG	U1CRT1	U1CRT1W	U1CART
1/0 AWG	U25RT	U25RTW	U25ART
2/0 AWG	U26RT	U26RTW	U26ART
3/0 AWG	U27RT	U27RTW	U27ART
4/0 AWG	U28RT	U28RTW	U28ART
250 kcmil	U29RT	N/A	U29ART
300 kcmil	U30RT		U30ART
350 kcmil	U31RT		U31ART
400 kcmil	U32RT		U32ART
500 kcmil	U34RT		U34ART
600 kcmil	U36RT		U36ART
750 kcmil	U39RT		U39ART2
Die Case	CASEUDIES15	CASEUDIES15	CASEUDIES15

UDIEKITHYGRD includes 8 dies sets. Seven die sets are used to install the BURNDY® HYGROUND® irreversible compression grounding connectors; the U2CABT die set is for pre-crimping 1/2", 5/8" and 3/4" ground rods for increased rotational resistance. The UDIEKITHYGRD also includes the **CASEUDIES8** die case.

UDIEKITHYGRD includes

UC, UO, U997, PU998, U1011, U1104, U1105, U2CABT (Ground rod pre-crimp die), and CASEUDIES8 die case

UM-Style Dies

For OEM840NCP up to 4/0;
35 and 750 Tool Series;
46 Series with PUADP1 Adapter

UM-style Nest and Indenter dies are specifically designed to work with the YAD lugs. The distinctive "M" crimping profile design straddles the brazed seam of the YAD-M and YAV-L series lugs to provide a consistent, long term, reliable connection. Accepts copper cable sizes from 8 AWG to 600 kcmil for DLO/ Flex cable.

CNC machined from stainless steel, these dies are compatible with all BURNDY® tooling that accepts a "U" die envelope.

Sold individually or in a kit (UMDIEKIT) which has select dies/indenters covering #8 to 4/0 AWG in a plastic die case.



Copper Wire Size	Catalog Number (Indenter Dies)	Catalog Number (Nest Dies)	Crimps Lug Series
8 AWG DLO	UMA	UM8CN	YAD-M*, YAV-L
6 AWG DLO	UMB	UM6CN	YAD-M*, YAV-L
4 AWG DLO	UMB	UM4CN	YAD-M*, YAV-L
2 AWG DLO	UMB	UM2CN	YAD-M*, YAV-L
1/0 AWG DLO	UMC	UM25N	YAD-M*, YAV-L*
2/0 AWG DLO	UMC	UM26N	YAD-M*, YAV-L*
3/0 AWG DLO	UMC	UM27N	YAD-M*, YAV-L*
4/0 AWG DLO	UMC	UM28N	YAD-M*, YAV-L*
300 kcmil DLO	UME	UM30N	YAD-M*
350 kcmil DLO	UME	UM31N	YAD-M*
450 kcmil DLO	UME	UM33N	YAD-M*
600 kcmil DLO	UME	UM36N	YAD-M*

* Not UL Listed



Close up of "M" Profile Crimp

UMDIEKIT Contents		
Catalog Number	Description	Quantity
UMA	Indenter #8 AWG	1
UMB	Indenter #6, #4, #2 AWG	1
UMC	Indenter 1/0-4/0	1
UM8CN	Nest #8 AWG	1
UM6CN	Nest #6 AWG	1
UM4CN	Nest #4 AWG	1
UM2CN	Nest #2 AWG	1
UM25N	Nest 1/0 AWG	1
UM26N	Nest 2/0 AWG	1
UM27N	Nest 3/0 AWG	1
UM28N	Nest 4/0 AWG	1
CASEUDIES15	UM Die Kit Case	1

W Dies

For MD/PATMD, 500, and 600 Tool Series

* These sizes (250 - 500) are not recommended for use with MD6 & MD7 Series tools due to high handle force.

** For PAT600 and Y500CTHS only.

*** Use of W249 will not produce a UL Listed connection.

Note: N/A = not applicable

Suitable for use on YA, YS, YA-A, YS-A type non-tension connectors.

Die Sets sold separately; W Die Kits also available; see following page



W25RT Die Set

Wire Size	Copper (-VT)	Copper (-RT)	Aluminum
#8 AWG	W8CVT	W8CRT	X8CART
#6 AWG	W5CVT	W5CRT	W161
#4 AWG	W4CVT	W4CRT	W162
#3 AWG	N/A	W3CRT	N/A
#2 AWG	W2CVT	W2CRT	W239
#1 AWG	W1CVT	W1CRT1	W163
1/0 AWG	W25VT	W25RT	W241
2/0 AWG	W26VT	W26RT	W245
3/0 AWG	W27VT	W27RT	W166
4/0 AWG	W28VT	W28RT	W660
250 kcmil	W29VT*	W29RT*	W249***
300 kcmil	W30VT*	W30RT*	N/A
350 kcmil	W31VT*	W31RT*	W31ART*
400 kcmil	W32VT*	W32RT*	N/A
450 kcmil	W33VT*	W33RT*	N/A
500 kcmil	W34VT*	W34RT*	N/A
600 kcmil	N/A	W36RT**	N/A

VT = "V" profile die for reduced handle force when using MD6/MD7 series tools; Twin die (includes both halves)
RT = Round die (circumferential); Twin die (includes both halves)



WDIETREE available (sold separately); holds up to 6 "W" style die sets (dies not included)



CASEWDIES die box available (sold separately); holds up to 12 "W" or "X" style die sets (dies not included)

W Die Kits

For MD/PATMD, 500, and 600 Tool Series

* These sizes (250 - 500) are not recommended for use with MD6 & MD7 Series tools due to high handle force.

** Use of W249 will not produce a UL Listed connection.

Note: N/A = not applicable

Suitable for use on YA, YS, YA-A, YS-A type non-tension connectors.



CASEWDIES
included with die kits;
also sold separately
(dies not included)

Wire Size	WDIEKITCU for Copper includes	WDIEKITAL for Aluminum includes
#8 AWG	W8CRT	X8CART
#6 AWG	W5CRT	W161
#4 AWG	W4CRT	W162
#2 AWG	W2CRT	W239
#1 AWG	W1CRT1	W163
1/0 AWG	W25RT	W241
2/0 AWG	W26RT	W245
3/0 AWG	W27RT	W166
4/0 AWG	W28RT	W660
250 kcmil	W29RT*	W249**
350 kcmil	W31RT*	W31ART*
500 kcmil	W34RT*	N/A
Die Case	CASEWDIES	CASEWDIES

PATRIOT® 11 Ton, Scissor Action

Copper and Aluminum up to 4.00" O.D.
Hydraulic Self-Contained, 18V Lithium-Ion

Tool Series: PATCUT4

- Extra wide jaw opening
- Scissor action cutting jaws
- 355° head rotation
- Multi-position assist handle
- Includes 2 batteries, charger, lanyard, polymer carrying case
- **EP Enhanced Power** — tools accept 2.0, 3.0, 4.0, 5.0, and 6.0Ah Makita batteries



For Use On:

Maximum Cutting Capacity:

Copper and Aluminum: up to 4.00" O.D.

Models:

PATCUT4CUALLI with 3.0Ah battery
PATCUT4L5 with 5.0Ah battery

Specifications:

Output Force:	11 Tons
Tool Weight:	20.3 lbs
Size:	24.31" X 3.26" X 15.33"
Operating Voltage:	18 V-DC Lithium-Ion
Recharge Time:	30 minutes (3.0Ah) 45 minutes (5.0Ah)
Warranty:	5 year limited warranty (excludes blades) Lifetime warranty on INFINITY DRIVE® 3 year on batteries and charger

Accessories:

BAT18VLI:	3.0Ah Li-Ion battery
BAT18V5AHLI:	5.0Ah Li-Ion battery
PATCHGRLI:	120V-AC Charger
PATCHGRLIDC:	12/24V-DC Charger
PT208620:	Tool Retention Lanyard

PATCUT4CUAL

with multi-position assist handle



See Important Notes page at start of Tooling Section.

PATRIOT® 10 Ton, Latch Head

ACSR up to 2156 kcmil

Hydraulic Self-Contained, 18V Lithium-Ion

Tool Series: PATCUT2156

- 180° head rotation
- Durable hardened steel blades
- Specialized latch head for mid-span cuts
- Mechanical ram release with no power consumption
- Includes 2 batteries, charger, and carrying case
- **EP Enhanced Power** — tools accept 2.0, 3.0, 4.0, 5.0, and 6.0Ah Makita batteries

For Use On:

Copper/Aluminum Cable: up to 2"

ACSR: up to 2156 kcmil

Ground Rod: up to 3/4"

Rebar: up to 5/8"

Soft Steel Bolts: up to 3/4"

Standard Guy: up to 9/16"

EHS Guy: up to 9/16"

Models:

PATCUT2156LI with 3.0Ah battery, hard case
PATCUT2156L5 with 5.0Ah battery, hard case

PATCUT2156LIPB with 3.0Ah battery, pro bag
PATCUT2156L5PB with 5.0Ah battery, pro bag



Specifications:

Output Force: 10 Tons
Tool Weight: 15.5 lbs
Size: 16.50" x 13.50" x 3.38"
Operating Voltage: 18 V-DC Lithium-Ion
Recharge Time: 30 minutes (3.0Ah)
45 minutes (5.0Ah)
Warranty: 5 year limited warranty (excluding blades)
Lifetime warranty on INFINITY DRIVE®
3 year on batteries and charger

Accessories:

BAT18VLI: 3.0Ah Li-Ion battery
BAT18V5AHLI: 5.0Ah Li-Ion battery
PATCHGRLLI: 120V-AC Charger
PATCHGRLLIDC: 12/24V-DC Charger
PT208620: Lanyard
CUT200BLMVBL: Replacement Moving Blade
CUT200BLSTA: Replacement Fixed (Stationary) Blade

See Important Notes page at start of Tooling Section.

PATRIOT® 7 Ton, Latch Head

Copper/Aluminum up to 1.29" O.D.

Hydraulic Self-Contained, 18V Lithium-Ion

Tool Series: PATCUT129

- 180° head rotation
- Overmolded handle and ergonomic design
- One-handed operation for advance, retract and hold
- Latch head design for interference free closure for mid-span cuts
- Includes 2 batteries, charger, and carrying case
- **EP Enhanced Power** — tools accept 2.0, 3.0, 4.0, 5.0, and 6.0Ah Makita batteries

For Use On:

Copper/Aluminum Cable: up to 1.29"

ACSR: up to 1113 kcmil

Ground Rod: up to 5/8"

Rebar: up to 1/2"

Soft Steel Bolts: up to 5/8"

Standard Guy: up to 1/2"

EHS Guy Strand: up to 3/8"

Models:

PATCUT129LI with 3.0Ah battery, hard case
PATCUT129L5 with 5.0Ah battery, hard case

PATCUT129LIPB with 3.0Ah battery, pro bag
PATCUT129L5PB with 5.0Ah battery, pro bag



Specifications:

Output Force:	7 Tons
Tool Weight:	10.2 lbs
Size:	14.50" x 13.50" x 3.50"
Operating Voltage:	18 V-DC Lithium-Ion
Recharge Time:	30 minutes (3.0Ah) 45 minutes (5.0Ah)
Warranty:	5 year limited warranty (excluding blades) Lifetime warranty on INFINITY DRIVE® 3 year on batteries and charger

Accessories:

BAT18VLI:	3.0Ah Li-Ion battery
BAT18V5AHLI:	5.0Ah Li-Ion battery
PATCHGRLI:	120V-AC Charger
PATCHGRLIDC:	12/24V-DC Charger
PT208620:	Lanyard
PT10037388:	Replacement Moving Blade
PT10037384:	Replacement Fixed Blade

See Important Notes page at start of Tooling Section.

PATRIOT® 6 Ton, Latch Head

Copper/Aluminum up to 2.45" O.D.
Hydraulic Self-Contained, 18V Lithium-Ion

Tool Series: PATCUT245

- 180° head rotation
- Cuts up to 2.45" diameter copper/aluminum cable
- Specialized latch style cutting head for interference-free closure for mid-span work
- Ergonomic design, overmolded handle
- Includes 2 batteries, charger, and carrying case
- **EP Enhanced Power** — tools accept 2.0, 3.0, 4.0, 5.0, and 6.0Ah Makita batteries

For Use On:

Copper/Aluminum Cable: Up to 2.45" O.D.

For Copper and Aluminum cable only. Do not cut steel, ground rod, rebar or guy wire.

Models:

PATCUT245LI with 3.0Ah battery, hard case
PATCUT245L5 with 5.0Ah battery, hard case

PATCUT245LIPB with 3.0Ah battery, pro bag
PATCUT245L5PB with 5.0Ah battery, pro bag



Specifications:

Output Force:	6 Tons
Tool Weight:	13.7 lbs
Size:	18.13" x 13.50" x 3.50"
Operating Voltage:	18 V-DC Lithium-Ion
Recharge Time:	30 minutes (3.0Ah) 45 minutes (5.0Ah)
Warranty:	5 year limited warranty (excluding blades) Lifetime warranty on INFINITY DRIVE® 3 year on batteries and charger

Accessories:

BAT18VLI:	3.0Ah Li-Ion battery
BAT18V5AHLI:	5.0Ah Li-Ion battery
PATCHGRLLI:	120V-AC Charger
PATCHGRLLDC:	12/24V-DC Charger
PT208620:	Lanyard
PT10038657:	Replacement Moving Blade
PT10040663:	Replacement Fixed Blade

See Important Notes page at start of Tooling Section.

PATRIOT® 6 Ton, Scissor Action

Hydraulic Self-Contained, 18V Lithium-Ion

Tool Series: PAT500SJCUT

- Interchangeable scissor action crimping and cutting jaws
- 180° head rotation
- Uses W and X style dies with available crimping jaws
- Ergonomically balanced tool design
- Includes 2 batteries, charger, and polymer carrying case
- **EP Enhanced Power** — tools accept 2.0, 3.0, 4.0, 5.0, and 6.0Ah Makita batteries



For Use On:

Maximum Cutting Capacity:

ACSR:	556.5 kcmil (26/7 Dove)
AAC:	636 kcmil
Copper:	350 kcmil soft drawn copper

Models:

PAT500SJCUTLI	with 3.0Ah battery
PAT500SJCUTL5	with 5.0Ah battery

Interchangeable Jaw Assemblies:

PATMD6LWJAW	Crimp jaw with BG and D3 grooves
PATMD68LWJAW	Crimp jaw with O and D3 grooves
PATMD66LWJAW	Crimp jaw with D3 groove only
PATMDXPJLWJAW	Crimp jaw with X, P, & J grooves
**PATMD430LWJAW	**Crimp jaw, Dieless for #4-3/0 AWG
PATMDCUTLWJAW	Cutting jaw with ACSR blades
PATMDCUTCLWJAW	Cutting jaw with CU/AL blades
PATMDCUTGLWJAW	Cutting jaw with GUY blades

**Dieless Jaw only for use on #4-3/0 AWG BURNDY® Overhead Distribution Families: YDS-RL, YDSR-RL, YDS-RLY, YDR-RL, YDRR-RL, YCS-RL, YCA-RL and YSS-R

Specifications:

Output Force:	6 Tons
Tool Weight:	11.5 lbs
Size:	17.00" X 14.25" X 3.00"
Die Style:	W and X (with crimping jaws)
Operating Voltage:	18 V-DC Lithium-Ion
Recharge Time:	30 minutes (3.0Ah) 45 minutes (5.0Ah)
Warranty:	5 year limited warranty Lifetime warranty on INFINITY DRIVE® 3 year on batteries and charger

Accessories:

BAT18VLI:	3.0Ah Li-Ion battery
BAT18V5AHLI:	5.0Ah Li-Ion battery
PATCHGRLL:	120V-AC Charger
PATCHGRLLDC:	12/24V-DC Charger
PATMD6LWJWCVR:	Jaw covers for PATMD6 and PATMD68 versions
PATMD66LWJWCVR:	Jaw covers for PATMD66 snub-nose versions
PT10074020:	Wrist strap
W28K:	Cutter Dies (cuts 4-4/0 Cu, Al, ACSR)
WDIETREE:	W-die holder for 6 die sets

Crimp/Cut Kits:

PAT500SJ6LICUTKIT1	Kit includes crimp head with BG & D3 grooves, cutter jaw with ACSR blades, 120V charger and 2 batteries (3.0Ah)
PAT500SJ68LICUTKIT1	Kit includes crimp head with O & D3 grooves, cutter jaw with ACSR blades, 120V charger and 2 batteries (3.0Ah)

See Important Notes page at start of Tooling Section.

PATRIOT® IN-LINE® 6 Ton, Scissor Action
Hydraulic Self-Contained, 18V Lithium-Ion

Tool Series: PATMDCUTLW

- Light weight, compact and ergonomic design
- Interchangeable scissor action crimping and cutting jaws
- Safety trigger lock and locking jaw tabs
- LED Worklight
- **EP Enhanced Power** — tools accept 2.0, 3.0, 4.0, 5.0, and 6.0Ah Makita batteries

Cutting Capacities	ACSR (26/7)	Aluminum (AAC)	Copper (soft drawn)	Guy Wire (EHS)
ACSR Blade	556.5 kcmil	636 kcmil	350 kcmil	-
CU/AL Blade	-	636 kcmil	600 kcmil	-
GUY Blade	-	-	-	3/8"

Models:

- PATMDCUTLW: ACSR Cutting Jaw, 3.0Ah batteries, AC charger
 PATMDCUTLW5: ACSR Cutting Jaw, 5.0Ah batteries, AC charger
 PATMDCUTCLW: CU/AL Cutting Jaw, 3.0Ah batteries, AC charger
 PATMDCUTCLW5: CU/AL Cutting Jaw, 5.0Ah batteries, AC charger
 PATMD60003A1: GUY Cutting Jaw, 3.0Ah batteries, AC charger
 PATMD60005A1: GUY Cutting Jaw, 5.0Ah batteries, AC charger

Standard Crimp/Cut Kits are available supplied with both crimping and cutting jaws. (See separate pages in Crimpers Section.)

Customize a tool kit with up to 3 jaws and optional accessories.

Contact Customer Service at 1-800-346-4175.

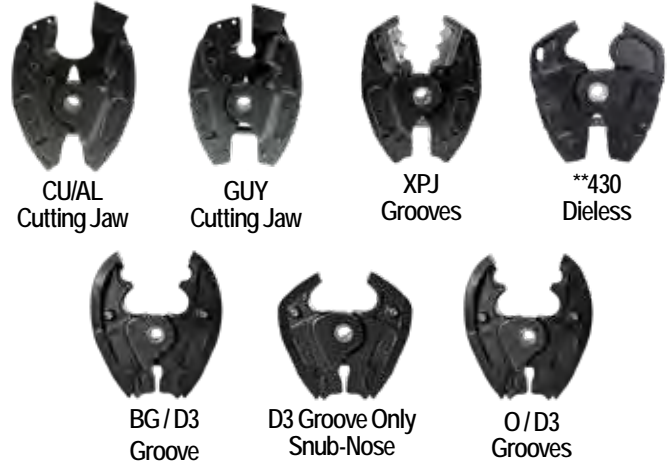
Interchangeable Jaw Assemblies:

- PATMD6LWJAW Crimp jaw with BG and D3 grooves
 PATMD68LWJAW Crimp jaw with O and D3 grooves
 PATMD66LWJAW Crimp jaw with D3 groove only
 PATMDXPJLWJAW Crimp jaw with X, P & J grooves
 PATMD430LWJAW Crimp jaw, Dieless, #4 AWG - 3/0 AWG
 PATMDCUTLWJAW Cutting jaw with ACSR blades
 PATMDCUTCLWJAW Cutting jaw with CU/AL blades
 PATMDCUTGLWJAW Cutting jaw with GUY blades

Shown with
ACSR
Cutting Jaw



Interchangeable Jaws



Specifications:

- Output Force: 6 Tons
 Tool Weight: 7.2 lbs
 Length: 19.25"
 Operating Voltage: 18 V-DC Lithium-Ion
 Recharge Time:
 3.0Ah 30 minutes
 5.0Ah 45 minutes
 Warranty: 5 year limited warranty
 Lifetime warranty on INFINITY DRIVE®
 3 years on batteries and charger

Accessories:

- PATMDCUTACSRKIT: ACSR Replacement Blades (2 per kit)
 PATMDCUTCUALKIT: CU/AL Replacement Blades (2 per kit)
 PATMDCUTGUYKIT: GUY Replacement Blades (2 per kit)
 BAT18VLI: Hi-capacity LI Makita battery (3.0Ah)
 BAT18V5AHLI: Hi-capacity LI Makita battery (5.0Ah)
 PATCHGRLI: 120V-AC Makita charger
 PATCHGRLIDC: 12/24V-DC Makita charger
 W28K: Cutter Dies (cuts 4-4/0 CU, AL, ACSR)
 WDIETREE: W-die holder for 6 die sets
 CASEWDIES: W-die case holder for 12 die sets
 TOOLBAGMDLI: Tool bag (included with tool)

See Important Notes page at start of Tooling Section.

PATRIOT® 6 Ton, Scissor Action

Hydraulic Self-Contained, 18V Lithium-Ion

Tool Series: PATMD-LW ACSR Kits

- Light weight, compact and ergonomic design
- Interchangeable scissor action crimping and cutting jaws
- Safety trigger lock and locking jaw tabs
- LED Worklight
- **EP Enhanced Power** — tools accept 2.0, 3.0, 4.0, 5.0, and 6.0Ah Makita batteries

Crimp Capacity		
Connector Type	Conductor Type	Range
Terminals & Splices	Copper	#8 AWG - 500 kcmil
Terminals & Splices	Flex Copper	#8 AWG - 350 kcmil
Terminals & Splices	Aluminum (AAC)	#8 AWG - 350 kcmil
Full-Tension	ACSR	#10 - 4/0 AWG
Taps	Copper	#10 - 2/0 AWG
Taps	AAC or ACSR	#14 - 4/0 AWG
Stirrups	ACSR	#6 - 4/0 AWG

ACSR Blade Cutting Capacity	
Conductor Type	Maximum Size
ACSR (26/7)	556.5 kcmil
Aluminum (AAC)	636 kcmil
Copper	350 kcmil

Models*: all listed include AC Charger

PATMD6LWWCJ: BG & D3, ACSR Cutter, 3.0Ah batteries
 PATMD68LWWCJ: O & D3, ACSR Cutter, 3.0Ah batteries
 PATMD66LWWCJ: D3 only, ACSR Cutter, 3.0Ah batteries

PATMD6LW5WCJ: BG & D3, ACSR Cutter, 5.0Ah batteries
 PATMD68LW5WCJ: O & D3, ACSR Cutter, 5.0Ah batteries
 PATMD66LW5WCJ: D3 only, ACSR Cutter, 5.0Ah batteries

*Add DC suffix to catalog numbers for DC charger in place of AC charger.

Interchangeable Jaw Assemblies:

PATMD6LWJAW Crimp jaw with BG and D3 grooves
 PATMD68LWJAW Crimp jaw with O and D3 grooves
 PATMD66LWJAW Crimp jaw with D3 groove only
 PATMDCUTLWJAW Cutting jaw with ACSR blades



Specifications:

Output Force: 6 Tons
 Tool Weight: 6.7 lbs (crimper) & 7.2 lbs (cutter)
 Length:
 PATMD6LW 18.73"
 PATMD68LW 18.73"
 PATMD66LW 17.85"
 PATMDCUTLW 19.25"
 Die Style: W and X (with crimping jaws)
 Operating Voltage: 18 V-DC Lithium-Ion
 Recharge Time:
 3.0Ah 30 minutes
 5.0Ah 45 minutes
 Warranty: 5 year limited warranty
 Lifetime warranty on INFINITY DRIVE®
 3 years on batteries and charger

Accessories:

PATMDCUTACSRKIT: ACSR Replacement Blades (2 per kit)
 BAT18VLI: Hi-capacity LI Makita battery (3.0Ah)
 BAT18V5AHLI: Hi-capacity LI Makita battery (5.0Ah)
 PATCHGRLI: 120V-AC Makita charger
 PATCHGRLIDC: 12/24V-DC Makita charger
 W28K: Cutter Dies (cuts 4-4/0 CU, AL, ACSR)
 WDIETREE: W-die holder for 6 die sets
 CASEWDIES: W-die case holder for 12 die sets
 TOOLBAGMDLI: Tool bag (included with tool)

See Important Notes page at start of Tooling Section.

PATRIOT® IN-LINE® 6 Ton, Scissor Action
Hydraulic Self-Contained, 18V Lithium-Ion

Tool Series: PATMD-LW CU/AL Kits

- Light weight, compact and ergonomic design
- Interchangeable scissor action crimping and cutting jaws
- Safety trigger lock and locking jaw tabs
- LED Worklight
- **EP Enhanced Power** — tools accept 2.0, 3.0, 4.0, 5.0, and 6.0Ah Makita batteries

Crimp Capacity		
Connector Type	Conductor Type	Range
Terminals & Splices	Copper	#8 AWG - 500 kcmil
Terminals & Splices	Flex Copper	#8 AWG - 350 kcmil
Terminals & Splices	Aluminum (AAC)	#8 AWG - 350 kcmil
Full-Tension	ACSR	#10 - 4/0 AWG
Taps	Copper	#10 - 2/0 AWG
Taps	AAC or ACSR	#14 - 4/0 AWG
Stirrups	ACSR	#6 - 4/0 AWG

CU/AL Blade Cutting Capacity	
Conductor Type	Maximum Size
Copper - Soft Drawn	600 kcmil
Aluminum (AAC)	636 kcmil

Models*: all listed include AC Charger

- PATMD6LWWCCJ: BG & D3, CU/AL Cutter, 3.0Ah batteries
 PATMD68LWWCCJ: O & D3, CU/AL Cutter, 3.0Ah batteries
 PATMD66LWWCCJ: D3 only, CU/AL Cutter, 3.0Ah batteries
- PATMD6LW5WCCJ: BG & D3, CU/AL Cutter, 5.0Ah batteries
 PATMD68LW5WCCJ: O & D3, CU/AL Cutter, 5.0Ah batteries
 PATMD66LW5WCCJ: D3 only, CU/AL Cutter, 5.0Ah batteries

*Add DC suffix to catalog numbers for DC charger in place of AC charger.

Interchangeable Jaw Assemblies:

- PATMD6LWJAW Crimp jaw with BG and D3 grooves
 PATMD68LWJAW Crimp jaw with O and D3 grooves
 PATMD66LWJAW Crimp jaw with D3 groove only
 PATMDCUTCLWJAW Cutting jaw with CU/AL blades



Specifications:

- Output Force: 6 Tons
 Tool Weight: 6.7 lbs (crimper) & 7.2 lbs (cutter)
 Length:
 PATMD6LW 18.73"
 PATMD68LW 18.73"
 PATMD66LW 17.85"
 PATMDCUTCLW 19.25"
 Die Style: W and X (with crimping jaws)
 Operating Voltage: 18 V-DC Lithium-Ion
 Recharge Time:
 3.0Ah 30 minutes
 5.0Ah 45 minutes
 Warranty: 5 year limited warranty
 Lifetime warranty on INFINITY DRIVE®
 3 years on batteries and charger

Accessories:

- PATMDCUTCUALKIT: CU/AL Replacement Blades (2 per kit)
 BAT18VL: Hi-capacity LI Makita battery (3.0Ah)
 BAT18V5AHLI: Hi-capacity LI Makita battery (5.0Ah)
 PATCHGRLL: 120V-AC Makita charger
 PATCHGRLLDC: 12/24V-DC Makita charger
 W28K: Cutter Dies (cuts 4-4/0 CU, AL, ACSR)
 WDIETREE: W-die holder for 6 die sets
 CASEWDIES: W-die case holder for 12 die sets
 TOOLBAGMDLI: Tool bag (included with tool)

See Important Notes page at start of Tooling Section.

PATRIOT® 6 Ton, Scissor Action Hydraulic Self-Contained, 18V Lithium-Ion

Tool Series: PATMD-LW GUY Kits

- Light weight, compact and ergonomic design
- Interchangeable scissor action crimping and cutting jaws
- Safety trigger lock and locking jaw tabs
- LED Worklight
- **EP Enhanced Power** — tools accept 2.0, 3.0, 4.0, 5.0, and 6.0Ah Makita batteries

Crimp Capacity		
Connector Type	Conductor Type	Range
Terminals & Splices	Copper	#8 AWG - 500 kcmil
Terminals & Splices	Flex Copper	#8 AWG - 350 kcmil
Terminals & Splices	Aluminum (AAC)	#8 AWG - 350 kcmil
Full-Tension	ACSR	#10 - 4/0 AWG
Taps	Copper	#10 - 2/0 AWG
Taps	AAC or ACSR	#14 - 4/0 AWG
Stirrups	ACSR	#6 - 4/0 AWG

GUY Blade Cutting Capacity	
Conductor Type	Maximum Size
Guy Wire (EHS)	3/8"

Models*: all listed include AC Charger

PATMD16003A1: BG & D3, GUY Cutter, 3.0Ah batteries
 PATMD36003A1: O & D3, GUY Cutter, 3.0Ah batteries
 PATMD26003A1: D3 only, GUY Cutter, 3.0Ah batteries

PATMD16005A1: BG & D3, GUY Cutter, 5.0Ah batteries
 PATMD36005A1: O & D3, GUY Cutter, 5.0Ah batteries
 PATMD26005A1: D3 only, GUY Cutter, 5.0Ah batteries

*Change A to D in catalog numbers for DC charger in place of AC charger.

Interchangeable Jaw Assemblies:

PATMD6LWJAW Crimp jaw with BG and D3 grooves
 PATMD68LWJAW Crimp jaw with O and D3 grooves
 PATMD66LWJAW Crimp jaw with D3 groove only
 PATMDCUTGLWJAW Cutting jaw with GUY blades



Specifications:

Output Force: 6 Tons
 Tool Weight: 6.7 lbs (crimper) & 7.2 lbs (cutter)
 Length:
 PATMD6LW 18.73"
 PATMD68LW 18.73"
 PATMD66LW 17.85"
 PATMD60003A1 19.25"
 Die Style: W and X (with crimping jaws)
 Operating Voltage: 18 V-DC Lithium-Ion
 Recharge Time:
 3.0Ah 30 minutes
 5.0Ah 45 minutes
 Warranty: 5 year limited warranty
 Lifetime warranty on INFINITY DRIVE®
 3 years on batteries and charger

Accessories:

PATMDCUTGUYKIT: GUY Replacement Blades (2 per kit)
 BAT18VLI: Hi-capacity LI Makita battery (3.0Ah)
 BAT18V5AHLI: Hi-capacity LI Makita battery (5.0Ah)
 PATCHGRLI: 120V-AC Makita charger
 PATCHGRLIDC: 12/24V-DC Makita charger
 W28K: Cutter Dies (cuts 4-4/0 CU, AL, ACSR)
 WDIETREE: W-die holder for 6 die sets
 CASEWDIES: W-die case holder for 12 die sets
 TOOLBAGMDLI: Tool bag (included with tool)

See Important Notes page at start of Tooling Section.

PATRIOT® 7.7 Ton, C-Head

Live Line, Hot Stick Cable Cutter

Hydraulic Self-Contained, 18V Lithium-Ion



Tool Series: PATCUT954HS

- New C-Head design
- Durable cutting blades
- Assist handle to aid maneuvering the cutting head
- Pistol-style grip
- ASTM F711 Rated Pole for live line use
- Offered in two lengths: 94" and 82"
- Includes 2 batteries, charger, and case
- **EP Enhanced Power** — tools accept 2.0, 3.0, 4.0, 5.0, and 6.0Ah Makita batteries

For Use On:

Maximum Cutting Capacity:

ACSR: up to 954 kcmil

Aluminum (AAC): up to 795 kcmil

Copper (soft drawn): up to 795 kcmil

Models:

PATCUT954HS82LI 82" pole, 3.0Ah 18V LI, AC charger
PATCUT954HS82L5 82" pole, 5.0Ah 18V LI, AC charger
PATCUT954HS82LCB 82" pole, no batteries or charger

PATCUT954HS94LI 94" pole, 3.0Ah 18V LI, AC charger
PATCUT954HS94L5 94" pole, 5.0Ah 18V LI, AC charger
PATCUT954HS94LCB 94" pole, no batteries or charger

Specifications:

Output Force:	7.7 Tons
Tool Weight:	19 lbs
Size:	95.5" x 16.7" x 3.5"
Operating Voltage:	18 V-DC Lithium-Ion
Recharge Time:	
3.0Ah	30 minutes
5.0Ah	45 minutes
Warranty:	5 year limited warranty (excluding blades) Lifetime warranty on INFINITY DRIVE® 3 years on batteries and charger

Accessories:

BAT18VLI:	Hi-capacity LI Makita battery (3.0Ah)
BAT18V5AHLI:	Hi-capacity LI Makita battery (5.0Ah)
PATCHGRLLI:	120V-AC Makita charger
PATCHGRLLDC:	12/24V-DC Makita charger
BLMVBLL954KIT:	Replacement Moving Blade with hardware
BLFIXED954KIT:	Replacement Fixed Blade with hardware



See Important Notes page at start of Tooling Section.

PATRIOT® IN-LINE® Angle Pole Cutter/Crimper

Hydraulic Self-Contained, 18V Lithium-Ion, 82"

Tool Series: PATMDCUT82ALLIF

- Adjustable Angular Head
- ASTM F711 Rated Pole for live line use
- Rocker trigger design for controlled actuation of the tool
- Safety lock to prevent accidental operation
- Includes 2 batteries and charger
- **EP Enhanced Power** — tools accept 2.0, 3.0, 4.0, 5.0, and 6.0Ah Makita batteries

For Use On:

Maximum Cutting Capacity:

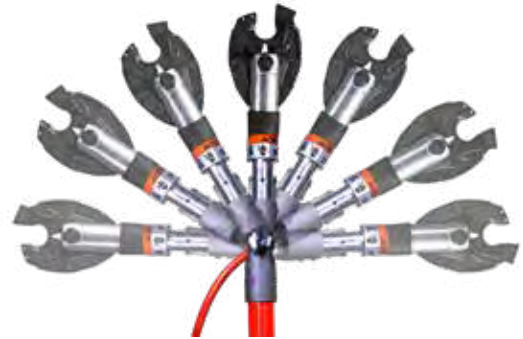
ACSR (26/7):	556.5 kcmil
Aluminum (AAC):	up to 636 kcmil
Copper (soft drawn):	up to 350 kcmil

Models:

PATMDCUT82ALLIF	Cutter jaw; 82" F711 Pole
PATMD682ALLIF	Crimp Jaws (BG & D3); 82" F711 Pole
PATMD6882ALLIF	Crimp Jaws (O & D3); 82" F711 Pole
PATMD6682ALLIF	Crimp Jaws (D3 only); 82" F711 Pole

Kits with Tool, Crimping and Cutting Jaws, Pole:

PATMD682ALLIFWCJ	Kit includes crimp head with BG & D3 grooves, cutter jaw, 120V charger and 2 batteries
PATMD6882ALLIFWCJ	Kit includes crimp head with O & D3 grooves, cutter jaw, 120V charger and 2 batteries
PATMD6682ALLIFWCJ	Kit includes crimp head with D3 groove, cutter jaw, 120V charger and 2 batteries



Specifications:

Output Force:	6 Tons
Operating Voltage:	18 V-DC Lithium-Ion
Recharge Time:	30 minutes
Warranty:	5 year limited warranty (excludes blades and pole) Lifetime warranty on INFINITY DRIVE® 3 year on batteries and charger

Accessories:

BAT18VLI:	Hi-capacity LI battery (3.0 AH)
PATCHGRLI:	120V-AC Charger
PATCHGRLIDC:	12/24V-DC Charger
WDIETREE:	W-die holder for 6 die sets

Interchangeable Jaw Assemblies:

PATMD6LWJAW	Crimp jaw with BG and D3 grooves
PATMD68LWJAW	Crimp jaw with O and D3 grooves
PATMD66LWJAW	Crimp jaw with D3 groove only
PATMDCUTLWJAW	Cutting jaw with ACSR blades
PATMDCUTCLWJAW	Cutting jaw with CU/AL blades
PATMDCUTGLWJAW	Cutting jaw with GUY blades

See Important Notes page at start of Tooling Section.

**PATRIOT® Battery Actuated
Cable Cutter for Copper & Aluminum**
Mechanically Driven, 18V Lithium-Ion

Tool Series: PATCUT1500

- Variable speed trigger
- Forward/Reverse switch features a locking position
- Large, strategically placed, non-skid bumper
- LED Worklight
- Large, new cutting blade design
- Includes 1 battery, charger, and case
- **EP Enhanced Power** — tools accept 2.0, 3.0, 4.0, 5.0, and 6.0Ah Makita batteries

For Use On:

Aluminum: up to 1500 kcmil

Copper Flex: up to 1250 kcmil

Copper (soft drawn): up to 1000 kcmil

Copper (hard drawn): up to 750 kcmil

Do Not Cut Steel or ACSR

Models:

PATCUT1500LI with 3.0Ah Li-Ion battery, hard case
PATCUT1500L5 with 5.0Ah Li-Ion battery, hard case

PATCUT1500LIPB with 3.0Ah Li-Ion battery, pro bag
PATCUT1500L5PB with 5.0Ah Li-Ion battery, pro bag



Specifications:

Tool Weight:	8.1 lbs with battery
Size:	15.5" x 6.0" x 4.38"
Operating Voltage:	18 V-DC Lithium-Ion
Recharge Time:	
3.0Ah	30 minutes
5.0Ah	45 minutes
Warranty:	3 year limited warranty (excluding blades) 3 years on battery and charger

Accessories:

BAT18VLI:	Hi-capacity LI Makita battery (3.0Ah)
BAT18V5AHLI:	Hi-capacity LI Makita battery (5.0Ah)
PATCHGRLLI:	120V-AC Makita charger
PATCHGRLLIDC:	12/24V-DC Makita charger
CASEPATCUT1500:	Polymer carrying case
PT208620:	Lanyard

See Important Notes page at start of Tooling Section.

Hand Operated, Latch Head

Hydraulic Self-Contained Hand Operated

Tool: YCUT129ACSR

- Rapid advance pump
- Handle trigger drain
- Interference free closure on mid-span cuts
- 180° head rotation

For Use On:

Copper/Aluminum Cable: up to 1.29"

ACSR: up to 1113 kcmil

Ground Rod: up to 5/8"

Rebar: up to 1/2"

Soft Steel Bolts: up to 5/8"

Standard Guy: up to 1/2"

EHS Guy Strand: up to 3/8"



Specifications:

Output Force:	7 Tons
Weight:	11.4 lbs
Size:	22.50" x 6.63" x 2.50"
Warranty:	5 year limited warranty (excluding blades)

Accessories:

PT10024162:	Carrying Case (included with tool)
PT10037388:	Moving Blade
PT10037384:	Fixed Blade



PT10024162 Hard Polymer Case for YCUT129ACSR

Remote Operated, Scissor Action
Cuts up to 4.00" Copper/Aluminum Cable

Tool: RHCC4CUAL

- Specialized scissor head design for interference free closure for mid-span cuts
- High strength hardened steel cutting blades
- 360° swivel hose fitting
- Stainless Steel lifting assist eyebolt
- Light weight ergonomic design

For Use On:

Copper/Aluminum Cable: up to 4.00"



Specifications:

Operating Pressure:	10,000 PSI
Weight:	19.9 lbs
Size:	21.29" x 9.13" x 5.15"
Warranty:	5 year limited warranty (excluding blades)

Accessories:

BAGCNVS5X9X24:	Canvas Bag (included with tool)
RHCC4CUALBLD:	Cutting Blade (one blade; 2 required)
RHCC4CUALGDEBLD:	Blade Guide



*BAGCNVS5X9X24 Canvas Bag available separately
(included with tool)*

*See Hydraulic Pumps and Hydraulic Hoses;
Pump Accessories
for other necessary equipment.*

Remote Operated, Latch Head Cuts up to 2156 kcmil ACSR

Tool Series: RHCC2156ACSR

- 180° head rotation
- Durable hardened, precision steel blades
- Specialized latch head for mid-span cuts
- Durable canvas carrying bag stores tool and accessories

For Use On:

Copper/Aluminum Cable:	up to 2"
ACSR:	up to 2156 kcmil
Ground Rod:	up to 3/4"
Rebar:	up to 5/8"
Soft Steel Bolts:	up to 3/4"
Standard Guy:	up to 9/16"
EHS Guy Strand:	up to 9/16"

Models:

RHCC2156ACSR	Standard RHCC2156ACSR remote cutter
RHCC2156ACSRF	RHCC2156ACSR tool with female coupler



Specifications:

Operating Pressure:	10,000 PSI
Weight:	10 lbs
Size:	13.17" x 4.13" x 2.69"
Warranty:	5 year limited warranty (excluding blades)

Accessories:

PT10054094:	Red Nylon Carry Bag (included with tool)
CUT200BLMVBL:	Replacement Moving Blade
CUT200BLSTA:	Replacement Fixed (Stationary) Blade

*See Hydraulic Pumps and Hydraulic Hoses;
Pump Accessories
for other necessary equipment.*



*PT10054094 Red Nylon Carry Bag available separately
(included with tool)*

Remote Operated, Latch Head
Cuts up to 1.29" Copper/Aluminum Cable

Tool: RHCC129ACSR

- Interference free closure for mid-span cuts
- Precision cutting blades for clean cuts
- High strength steel cylinder
- Light weight, ergonomic design
- Durable canvas carrying bag stores tool and accessories

For Use On:

Copper/Aluminum Cable: up to 1.29"

ACSR: up to 1113 kcmil

Ground Rod: up to 5/8"

Rebar: up to 1/2"

Soft Steel Bolts: up to 5/8"

Standard Guy: up to 1/2"

EHS Guy Strand: up to 3/8"



Specifications:

Operating Pressure:	10,000 PSI
Weight:	6.2 lbs
Size:	11.41" x 3.65" x 2.33"
Warranty:	5 year limited warranty (excluding blades)

Accessories:

PT10043890:	Canvas Bag (included with tool)
PT10037388:	Moving Blade
PT10037384:	Fixed Blade

*See Hydraulic Pumps and Hydraulic Hoses;
Pump Accessories
for other necessary equipment.*



*PT10043890 Canvas Bag available separately
(included with tool)*

Remote Operated, Latch Head

Cuts up to 2.45" Copper/Aluminum Cable

Tool: RHCC245CUAL

- Interference free closure for mid-span cuts
- Precision cutting blades for clean cuts
- Light weight ergonomic design
- Durable canvas carrying bag stores tool and accessories

For Use On:

Copper/Aluminum Cable: up to 2.45"



*PT10054094 Red Nylon Carry Bag available separately
(included with tool)*

Specifications:

Operating Pressure:	10,000 PSI
Weight:	8.4 lbs
Size:	14.80" x 4.74" x 2.45"
Warranty:	5 year limited warranty (excluding blades)

Accessories:

PT10054094:	Red Nylon Carry Bag (included with tool)
PT10038657:	Moving Blade
PT10040663:	Fixed Blade

*See Hydraulic Pumps and Hydraulic Hoses;
Pump Accessories
for other necessary equipment.*

Hand-held Stripper/Cutter Tools

For Cable Ties and #22 to #10 AWG

Tool: Y101300C (*Cuts Cable Ties & Wire*)
Y101400SC (*Strips & Cuts Wire*)

- Patented guide allows the blades to slide behind ties/wires without nicking others in a bundle
- Strips insulation accurately and consistently (Y101400SC)
- Ergonomic handles reduce user fatigue
- Scissor action with auto spring and lock improves usability
- Alloy steel blades are heat treated for long life

For Use On:

Y101300C for Cutting Cable Ties & Wire

All 18 - 250 lb Cable Ties

#22 - 10 AWG Copper & Aluminum Wire

Y101400SC for Stripping and Cutting Wire

#22 - 10 AWG Insulated and Bare Copper & Aluminum Wire



Specifications: (Y101300C)

Size: 6.63" x 2.34" x 1.63"
Weight: 0.30 lbs
Warranty: 5 year limited warranty



Specifications: (Y101400SC)

Size: 6.63" x 2.34" x 1.63"
Weight: 0.30 lbs
Warranty: 5 year limited warranty

Manual Cable Cutters For Copper/Aluminum Cable

Tool Series: MCC

- Rugged, high quality steel cutting blades
- Fiberglass handles with soft grips
- Excellent cutting edge performance
- Minimum of cable distortion

For Use On and Models:

MCC600 Copper & Aluminum up to 600 kcmil
21" overall length
1.31" max. insulation diameter
3.5 lbs

MCC1000 Copper & Aluminum up to 1000 kcmil
32" overall length
1.90" max. insulation diameter
9.0 lbs



Specifications (MCC600):

Weight:	3.5 lbs
Size:	21.00 x 5.00" x 2.00"
Max. Insulation Dia.:	1.31"
Warranty:	1 year limited warranty (excluding blades)

Accessories:

MCC600BLADESET:	Replacement blades for MCC600
MCC1000BLADESET:	Replacement blades for MCC1000

Ratchet Cable Cutters
For Copper/Aluminum Cable

Tool Series: RCC Cu/Al

- Rugged, high quality steel cutting blades
- Excellent cutting edge performance
- Minimal cable distortion

For Use On and Models:

RCC600E: Copper & Aluminum 600 kcmil
10.50" overall length
1.05" max. insulation diameter
1.2 lbs

RCC750HD: Copper & Aluminum 750 kcmil
10.35" overall length
1.62" max. insulation diameter
2.6 lbs

RCC1000: Copper & Aluminum 1000 kcmil
20.00" overall length
2.38" max. insulation diameter
4.5 lbs



RCC600E

Specifications (RCC600E):

Weight:	1.2 lbs
Length:	10.50" x 3.50" x 1.25"
Max. Insulation Dia.:	1.05"
Warranty:	1 year limited warranty (excluding blades)

Accessories:

RPC701302:	Fixed Replacement Blade for RCC1000
RPC701402:	Moveable Replacement Blade for RCC1000

Ratchet Cable Cutters

For ACSR, Copper/Aluminum Cable

Tool Series: RCC Cu/Al/ACSR

- Quick release, bi-directional ratchet mechanism
- Rapid blade advance
- Easy cutting with minimal cable distortion

For Use On and Models:

RCC954ACSR1K: Copper 1000 kcmil;
Aluminum 1000 kcmil;
ACSR 954 kcmil
22.75" overall length
1.38" max. insulation diameter
6.5 lbs

RCC556: Copper 500 kcmil;
Aluminum 500 kcmil;
ACSR 556.5 kcmil
21.00" overall length
1.25" max. insulation diameter
4.0 lbs

RCC336: Copper 350 kcmil;
Aluminum 500 kcmil;
ACSR 336 kcmil
10.5" overall length
0.74" max. insulation diameter
1.2 lbs



RCC954ACSR1K

Specifications (RCC954ACSR1K):

Weight:	6.5 lbs
Size:	22.75" x 7.00" x 1.88"
Max. Insulation Dia.:	1.38"
Warranty:	1 year limited warranty (excluding blades)

Accessories:

RPC705501:	Fixed Replacement Blade for RCC556
RPC705601:	Moveable Replacement Blade for RCC556
RPC902101:	Fixed Replacement Blade for RCC336
RPC902201:	Moveable Replacement Blade for RCC336

Ratchet Wire Rope Cutters
For Mild and Stainless Steel

Tool Series: RWRC

- Hardened steel blades
- Rapid blade advance
- Reduced handle force compared to scissor or compound action designs

For Use On and Models:

RWRC916: Mild Steel: 9/16" diameter
Stainless Steel: 1/2" diameter
20" overall length
9/16" diameter
4.4 lbs

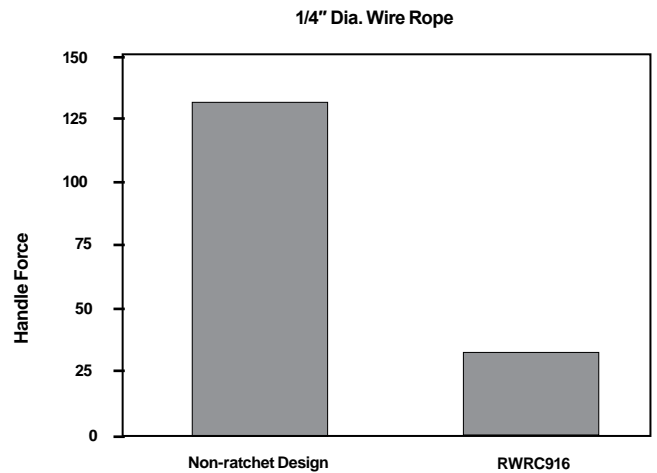
RWRC516: Mild Steel: 5/16" diameter
Stainless Steel: 1/4" diameter
10" overall length
5/16" diameter
1.2 lbs



RWRC916

Specifications (RWRC916):

Weight:	4.4 lbs
Size:	20.00" x 9.00" x 2.00"
Mild Steel Dia.:	9/16"
Stainless Steel Dia.:	1/2"
Warranty:	2 year limited warranty (excluding blades)



Electric Hydraulic Pump, 10,000 PSI Light Weight, Space Saving Design

Pump Series: Y10AC9

- Easy to carry and transport
- Factory set relief valve
- 100,000+ life cycles
- Sealed electric pendant switch with 10-foot cord

For Use With:

Y10AC9: 10,000 PSI electric pump
Used with: Y34BH, Y35BH, Y35BH4, Y750BHXT,
Y750CBHXT, Y45, Y46LWSBH,
Y46LWBH, Y60LW, Y4PC834MBH, Y444SBH,
Y81KFTMBH, RHCC Series Cutters



Models:

Y10AC9 Electric hydraulic pump
Y10AC9OEM Electric hydraulic pump with foot switch; pump features "Jog & Hold"

Examples of some of the remote crimping and cutting heads for use with Y10AC9 pump



Specifications:

Weight:	28.0 lbs (including oil)
Motor:	115V-AC 50/60 Hz 5/8 HP, 10,000 RPM
Height:	14.38"
Base:	8.25" x 6.50"
Max. Current Draw:	11 amp
Reservoir Volume:	1.61 quarts
Warranty:	5 year limited warranty

Accessories:

YACCASE: Steel carrying case with handle and locking latch
YACFC: Foot control switch

See Hydraulic Hoses; Pump Accessories for Hose options

Electric Hydraulic Pump, 10,000 PSI
Light Weight, Long Service Life

Pump: EPP10

- Lightweight, small size
- 100,000+ life cycles
- Durable remote pendant switch

For Use With:

EPP10: 10,000 PSI electric pump
Used with: Y34BH, Y35BH, Y35BH4, Y750BHXT,
Y750CBHXT, Y45, Y46LWSBH,
Y46LWBH, Y60LW, Y4PC834MBH, Y444SBH,
Y81KFTMBH, RHCC Series Cutters



Examples of some of the remote crimping and cutting heads for use with EPP10 pump



RHCC245CUAL

Y750BHXT

Y81KFTMBH

Specifications:

Motor:	115V-AC/60 Hz 1/2 HP @ 3450 RPM
Max. Current Draw:	12.5 amperes
Weight:	30.0 lbs
Base:	18.00" x 8.00" x 6.00"
Height:	16.00"
Reservoir Volume:	2 quarts
Warranty:	5 year limited warranty

Accessories:

EPPCASE1:	Steel carrying case with handle, locking latch
PT9711:	Pendant switch

*See Hydraulic Hoses; Pump Accessories
for Hose options*

Electric Hydraulic Pump, 10,000 PSI Dual Voltage/Hertz, Large Reservoir

Pump Series: EP10

- Dual voltage / hertz
- Oil level window
- 8 quart reservoir

Models / For Use With:

EP10:	10,000 PSI electric pump; 1/2 HP 115/230 V-AC; 60 cycle
Used with:	Y34BH, Y35BH, Y35BH4, Y750BHXT, Y750CBHXT, Y45, Y46LWSBH, Y46LWBH, Y60LW, Y4PC834MBH, Y444SBH, Y81KFTMBH, RHCC Series Cutters
EP102:	10,000 PSI electric pump; 1/2 HP 220/230 V-AC; 50/60 cycle
Used with:	Y34BH, Y35BH, Y35BH4, Y750BHXT, Y750CBHXT, Y45, Y46LWSBH, Y46LWBH, Y60LW, Y4PC834MBH, Y444SBH, Y81KFTMBH, RHCC Series Cutters
EP101HP:	10,000 PSI electric pump; 1 HP 115/230 V-AC; 60 cycle
Used with:	Y34BH, Y35BH, Y35BH4, Y750BHXT, Y750CBHXT, Y45, Y46LWSBH, Y46LWBH, Y60LW, Y4PC834MBH, Y444SBH, Y81KFTMBH, RHCC Series Cutters
EP101HP2:	10,000 PSI electric pump; 1 HP 220/230 V-AC; 50/60 cycle
Used with:	Y34BH, Y35BH, Y35BH4, Y750BHXT, Y750CBHXT, Y45, Y46LWSBH, Y46LWBH, Y60LW, Y4PC834MBH, Y444SBH, Y81KFTMBH, RHCC Series Cutters



Specifications:

Motor:	1/2 HP 115/230V-AC, 60 Cycle; 1/2 HP @ 3450 RPM
Max. Current Draw:	10 amperes
Reservoir Volume:	8 quarts max; 2 quarts min.
Height:	17.50"
Base:	11.75" x 18.50"
Dry Weight:	68.0 lbs (86.0 lbs with max. fluid)
Warranty:	5 year limited warranty

Accessories:

*See Hydraulic Hoses; Pump Accessories for
Hose options*

Electric Hydraulic Pump, 10,000 PSI
Large 8 Quart Reservoir, Roll Cage

Pump: EPAC10

- Roll cage
- 3 position switch and control box
- Full automatic or manual "Jog and Hold" cycles
- Windows allow easy inspection of proper oil level

For Use With:

EPAC10: 10,000 PSI electric pump
Used with: Y34BH, Y35BH, Y35BH4, Y750BHXT,
Y750CBHXT, Y45, Y46LWSBH,
Y46LWBH, Y60LW, Y4PC834MBH, Y444SBH,
Y81KFTMBH, RHCC Series Cutters

*Examples of some of the remote
crimping and cutting heads for use
with EPAC10 pump*



Y60LW



Y81KFTMBH



RHCC129ACSR



Specifications:

Motor:	1/2 HP 115/230V-AC, 60 Cycle; 1/2 HP @ 3450 RPM
Max. Current Draw:	10 amperes
Reservoir Volume:	8 quarts max; 2 quarts min.
Height:	17.50"
Base:	11.75" x 18.50"
Dry Weight:	68.0 lbs (82.0 lbs with max. fluid)
Warranty:	5 year limited warranty

Accessories:

*See Hydraulic Hoses; Pump Accessories for
Hose options*

Manual Hydraulic Pump, 10,000 PSI

Also Available in 6,000 PSI

Pump Series: HP10 and FP10

- Solid base with broad leg stabilizers
- Quick disconnect hydraulic fitting
- Built in handle for easy transport
- Factory set pressure release valve with audible click
- Quality, heavy duty foot pad with diamond plate steel (FP10)

Models / For Use With:

HP10: 10,000 PSI hand pump
Used with: Y34BH, Y35BH, Y35BH4, Y750BHXT,
Y750CBHXT, Y45, Y46LWSBH,
Y46LWBH, Y60LW, Y4PC834MBH, Y444SBH,
Y81KFTMBH, RHCC Series Cutters

FP10: 10,000 PSI foot pump
Used with: Y34BH, Y35BH, Y35BH4, Y750BHXT,
Y750CBHXT, Y45, Y46LWSBH,
Y46LWBH, Y60LW, Y4PC834MBH, Y444SBH,
Y81KFTMBH, RHCC Series Cutters

FP6: 6,000 PSI foot pump
Used with: Y29BH



HP10 Hand Pump

Specifications:

Weight:	18.0 lbs
Size:	24.75" x 6.75" x 3.00"
Height (open):	20.00"
Reservoir Volume:	1-1/8 quarts
Warranty:	5 year limited warranty

Accessories:

*See Hydraulic Hoses; Pump Accessories for
Hose options*

Gasoline Driven Hydraulic Pump, 10,000 PSI
Heavy Duty 4 Horse Power Gasoline Engine

Pump: GP10

- Sturdy steel roll cage design
- Manual control valve
- Fast hose assembly; quick disconnect hydraulic coupler
- Large 8 quart reservoir

For Use With:

GP10: 10,000 PSI; 4 HP engine, 4 cycle
Used with: Y34BH, Y35BH, Y35BH4, Y750BHXT,
Y750CBHXT, Y45, Y46LWSBH,
Y46LWBH, Y60LW, Y4PC834MBH,
Y444SBH, Y81KFTMBH, RHCC Series Cutters

Examples of some of the remote crimping and cutting heads for use with GP10 pump



Specifications:

Engine:	4 H.P.; 4 Cycle
Weight:	77.8 lbs (overall dry weight)
Size:	21.00" x 22.25" x 16.00"
Reservoir Volume:	8 quarts
Warranty:	5 year limited warranty

Accessories:

See Hydraulic Hoses; Pump Accessories for Hose options

Y60LW



Y750BHXT



10,000 PSI Non Conductive Hoses

- 3 lengths available in 2 diameters
- Orange
- Stackable couplers (male/female)

Models:

PT2990010	10' length; 3/16" diameter
PT2990015	15' length; 3/16" diameter
PT2990025	25' length; 3/16" diameter
PT2990110	10' length; 1/4" diameter
PT2990115	15' length; 1/4" diameter
PT2990125	25' length; 1/4" diameter



6,000 PSI Non Conductive Hoses

- Orange
- Stackable couplers (male/female)

Models:

PT2990210	10' length; 3/16" diameter
-----------	----------------------------

Notes:

For proper care and maintenance of hydraulic hoses, consult the **Hydraulic Hose Care Manual; Form #7828**.

1/4" diameter (available for 10,000 PSI only) hose provides a higher flow rate for faster ram movement.

10,000 PSI Conductive Hoses

- Stackable couplers (male/female)
- Steel braided with steel spring reinforced ends
- Black

Models:

PT91 8' length; steel braided with steel spring reinforced ends; stackable couplers (male/female); Black. No electrical rating.
DO NOT USE ON ENERGIZED CONDUCTOR



Notes:

For proper care and maintenance of hydraulic hoses, consult the **Hydraulic Hose Care Manual; Form #7828**.

8,800 PSI Conductive Hoses

- Stackable couplers (male/female)
- Steel braided with steel spring reinforced ends
- Black

Models:

PT76 8' length; steel braided with steel spring reinforced ends; stackable couplers (male/female); Black. No electrical rating.
DO NOT USE ON ENERGIZED CONDUCTOR



PT290741 Insulated Hose Carrying Bag

- Designed for protection and cleanliness for non conductive hoses; maximum carrying capacity of 10 lbs.
- Accommodates 100 feet of non-conductive hose coiled to 17-1/2" OD and 3-3/4" wide



ALFLUID™ Hydraulic Fluid for Pumps

- ALFLUIDQT is quart size; ALFLUIDGAL is gallon size
- All weather hydraulic fluid for BURNDY® pumps types HP hand pump, FP foot pump, GP gasoline pump, and EPP electric pump



PT93 (Female) and PT94 (Male)

- Replacement couplers for 10,000 PSI operating pressure (sold separately)



PT11018 In-Line Pressure Gauge for 10,000 PSI Hydraulic Pumps

- Pressure gauge for 10,000 PSI operating hydraulic pumps



PT29091 (Male) and PT292141 (Female)

- Replacement couplers for 6,000 PSI operating pressure (sold separately)



MD6CP1 Protective Jaw Covers

- Laminated vinyl jaw covers, supplied as set
- Compact, snap in place easily
- Fits all styles except Snub-Nose Models



PT6744 Jaw Cover (Snub-Nose)

- Semi-rigid Neoprene non-conductive material
- Fits all MD66 Snub-nose Models



PT49311 Die Button Repair Kit

- Replacement die button kit for MD6/MD7 tool Models



PT4925 Canvas Bag

- Sturdy canvas bag for MD6/MD7 tool Models with or without covers in place
- Holds up to 9 die sets (sold separately)



PT49521 Steel Carrying Case

- Provides storage for the following: MD6, MD66, MD68, MD614, MD637, MD638, MD7, and MD76 with or without covers (sold separately)
- Holds up to 18 die sets (sold separately)



PT6733 Hotstick Tool Carrying Bag

- Heavy-duty, adjustable canvas bag
- Accommodates 48", 60" and 72" Models of the MD6 and Y35 Hotstick tools



WBG Die Set

- Double groove die set
- One (1) crimp per end on service entrance sleeves
- Requires half the number of crimps on other 5/8" sleeves



W687 & W702 Non-Bowing Die Sets

- Install one-piece, full-tension UNISPLICE™ sleeves on ACSR conductors without bowing (sold separately)

W687: Installs #4 ACSR 6/1, 7/1; YDS4RL and YDS4RLY
#2 ACSR 6/1; YS2RL and YDS2RLY

W702: Installs #2 ACSR 7/1; YDS021RL and YDS021RLY
1/0 ACSR; YDS25RL and YDS25RLY



W28K Cutter Die Set

- Cuts #4 - 4/0 ACSR, Aluminum or Copper



WDIETREE W Die Holder

- Innovative die holder as alternative to the standard die case
- Designed to hold up to 6 W dies
- Shown with die sets (not included)



CASEWDIES Compact Die Case

- Space for 12 W or X style dies (not included)



PATPROBAG Heavy Duty Nylon Carry Bag

- Fits all PATRIOT® battery tools (excluding PATCUT4 series)
- Heavy Duty, Water-Resistant Nylon
- Corrosion Resistant Steel Hardware
- Dual Heavy Duty Zippers and Straps; Durable Base Liner and Reinforced Side Walls
- 19.4" x 11.5" x 11" and loaded with pockets for everything needed on the job



CASEUDIES15 Carry Case for U Dies

- Plastic case design for storage and protection of U dies
- Accommodates 15 die sets (standard or wide width U dies)
- Case is 11-1/4" x 7-1/2" x 3"
- Die sets sold separately
- CASEUDIES8 also offered, holds 8 die sets



PT6545 Die Case for S or P Style Die Sets

- Metal carrying case
- Accommodates 8 S or P Style Die Sets typically used with the Y45 and Y46 series of tools



HYFLUID™ Hydraulic Fluid for HYPRESS™ Tools

- HYFLUIDQT - quart size; HYFLUIDGAL - gallon size
- Hydraulic fluid for HYPRESS™ hand tools types Y35, Y352, Y750HSXT, and Y750CHSXT



PT294021

Adjustable Head Grip for Hot Stick PT294021 for Y35 and Y750 Remote Tools PT10128 for Y46 Tool

- Adjustable head grip for joining HYPRESS™ heads to universal hot sticks

Y35/Y39REPKITA Seal Repair Kit

- Seal repair kit for Y35 or Y39 (now discontinued) tools

Steel Carrying Cases for Y35 and Y352

- PT2972 - steel carrying case for Y35 tool
- PT29360 - steel carrying case for Y352 tool

Force Test Gauges

For Battery Actuated and Self-Contained Hydraulic Tools Only

- Not recommended for remote powered heads*
- Easy to read dials
- Custom U die blanks with detent (12 & 15 ton tools)
- Custom ram puck and v-block gauge adapters (11 ton dieless tools)
- Comes complete with polymer carry case to protect blanks, adapters, and gauge; includes operating and maintenance manual.
- 1 year limited warranty

*see PT11018 in-line pressure gauge for 10,000 psi pumps

Models:

FORCEGAUGE1215 For 12 & 15 ton tools

Use with: Y750HSXT, PAT750 Series, and
PAT46 Series (with PUADP1 Adaptor)

Weight & Size: 2.7 lbs; 8.30" x 4.30" x 1.50"

PT292792 For 12 ton tools

Use with: Y35

Weight & Size: 2.7 lbs; 9.25" x 3.88" x 2.00"

FORCEGAUGE11 For 11 ton dieless tools

Use with: Y644HSXT, PAT644 Series, and PAT444S Series

Weight & Size: 2.7 lbs; 9.00" x 3.98" x 1.24"



FORCEGAUGE1215 with die blanks (included)



*PT292792
with die blanks (included)*



*FORCEGAUGE11
(adapters not shown, included)*

WIREMIKE™
Stainless Steel Wire Micrometer
Available in multiple formats

- Strong, durable, high quality
- Most formats:
 - Allows for use as both caliper and ruler
 - Measures I.D. and O.D. of tubing
 - Measures thin-wall and rigid conduit including IPS
 - Measures ACSR, stranded and solid commercial cables

WIREMIKE, WIREMIKED and RK1942 are for use on:

ACSR

#6 to 336.4 (26/7) Stranded

Stranded AWG

#18 to 2000 kcmil

Solid

#20 to 4/0 AWG

IPS Tubing (Cu/Al) and Rigid Conduit:

1/4" to 2-1/2"

Tubing Sizes:

3-1/8" inside maximum; 2-15/16" outside maximum

Thin-wall Conduit:

3/8" to 2-1/2"

WIREMIKECI is for use on:

Compression Connectors and Splices (including Compression Grounding)

#18 to 2500 kcmil Copper Class B

#10 to 4/0 Solid Aluminum / Copper

#18 to 3500 kcmil Concentric Aluminum

#8 to 1100 kcmil Compact Aluminum

#14 to 1111 kcmil Copper DLO

Also used for reference only* for inspection of completed crimp when using Butting Copper or Aluminum Dies with the 750, 46, 35, or 39 series of tools.

Copper Dies U8CRT to U44XRT

Aluminum Dies U8CABT to U39ART-2



WIREMIKE

Models:

WIREMIKE Stainless Steel, inch/fraction markings

WIREMIKECI Stainless Steel, no ruler capabilities but may be used for reference on specific completed crimps (see more detail to left for WIREMIKECI)

WIREMIKED Stainless Steel, decimal markings in place of fraction markings, same capabilities as catalog # WIREMIKE™

RK1942 Convenience packaging of WIREMIKE™ (with inch markings) in packaging suitable for hanging on a rack; sold in multiples of 10 only



Close up for the Die Inspection Section (Used for Reference Only*) Catalog # WIREMIKECI only

*WIREMIKECI tool is to provide measurements for reference only, not to confirm the suitability of connection. Customer is responsible to independently verify suitability of connection.

Micro-Adjustable Professional Grade Hand-Operated "Click-Type" Torque Wrenches

Tool Series: BTW

- Ratcheting, calibrated, dual direction
- Positive lock with spring-loaded pull-down lock ring
- Individually serialized with matching certificate of calibration traceable to N.I.S.T.
- ASME B107.14M-2004 and ISO 6789

For Use On:

Any mechanical connection with torque values within range of specific torque wrench. Including, but not limited to:

Types: SERVIT[®], OKLIP[™], VERSITAP[™], SCRULUG[™], Lay-In QIKLUG[™], VARITAP[™], VARILUG[™], KA-U Universal Terminals, UNITAP[™], POLYTAP[™], BARTAP[™], Type BIPC, Terminal Blocks, U-BLOK[™], SPEC-BLOK[™], VERSIPOLE[™]

Models:

BTW30150	Torque range 30 - 150 in-lbs; 10.25" long; 3/8" drive
BTW150750	Torque range 150 - 750 in-lbs; 16.00" long; 3/8" drive
BTW1575F12	Torque range 15 - 75 ft-lbs; 16.00" long; 1/2" drive



Specifications:

Accuracy:	±4% clockwise; ±6% counter clockwise of indicated value clockwise, from 20% to 100% of full scale
Applicable Standards:	ASME B107.14M-2004; ISO 6789
Calibration:	Traceable to N.I.S.T.
Warranty:	1 year limited warranty





WTB

- WEJTAP™ patented tool body
- One piece assembly
- Installs WEJTAP™ and STIRRUP™ connectors #8 AWG - 1590 kcmil ACSR with applicable tool head



WTHY1S

- WEJTAP™ tool head
- Installs medium and large (yellow coded) connectors



WTHRBY1S

- WEJTAP™ tool head
- Installs small and medium (red/blue coded) connectors



WTBASY1

- WEJTAP™ ram replacement assembly

WEJTAP™ Boosters



- The WEJTAP™ System requires use of boosters for installation of connectors (red, blue, and yellow boosters match connectors)
- Boosters are available packaged with connectors and also sold separately

Red: WPBRNBOX25

Yellow: WPBYNBOX25

Blue: WPBBNBOX25

WTOCBR and WTOCY

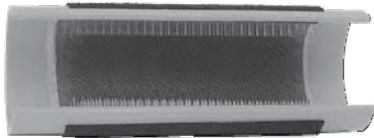


- WEJTAP™ removal clip for red/blue connectors (WTOCBR) with WTHRBY1S tool head
- WEJTAP™ removal clip for yellow connectors (WTOCY) with WTHY1S tool head



WTCK

- WEJTAP™ tool cleaning/maintenance kit for use with type WTB tool body
- Comes in clear carrying bag



WHHWB

- Hand-held wire brush for cleaning surface contact areas on non-energized conductors



WTCC

- Plastic carrying case only; designed for rugged use in all weather conditions
- Accommodates WEJTAP™ installation tool, removal clips, and cleaning kit (sold separately)



WABAG

- Durable bag designed to carry installation tool(s), removal clips, cleaning kit, and hotstick accessories; Holders for power boosters located on outside of bag (all sold separately)

WEJTAP™ Kits with contents shown below

	*Non-Hotstick Power Unit	Hotstick Power Unit	Self-Firing Tool	Large Frame (Yellows)	Large Frame Take Off Clip	Small Frame (Red, Blue)	Cleaning Kit	Small Frame Take Off Clip	Molded Carrying Case	Canvas Style Tool Bag
Component Kit Catalog No.	WTBNHS*	WTB	WTBGBW	WTHY1S	WTOCY	WTHRB1S	WTCK	WTOCBR	WTCC	WABAG
WT2B2RBYWABAG		2		1	1	1	1	1		1
WTRBYK		1		1	1	1	1	1	1	
WTRBYKNHS	1			1	1	1	1	1	1	
WTYK		1		1	1		1			
WTYKNHS	1			1	1		1			
WTRBK		1				1	1	1	1	
WTRBKNHS	1					1	1	1	1	
WTY		1		1			1			
WTRB		1				1	1			
WTRBKNHSBAG	1					1	1	1		1
WTBGBWRBYK			1	1	1	1	1	1	1	
WTRBYWABAG		1		1	1	1	1	1		1
WTRBYKNHSBAG	1			1	1	1	1	1		1

*Note: Non-hotstick power units do not contain features allowing activation with hotsticks; they are not upgradeable.



WHSCWH

- Hotstick connector clamp holds tap connector and wedge for installation on energized lines with shotgun hotstick



WHSPBC

- Hotstick dual cable clamp to hold run and tap conductors in place during installation; for all applications #8-1272 ACSR



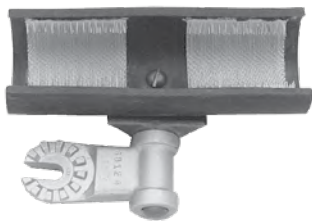
WHSWHADP

- Hotstick angle wedge holder adapter attaches wedge clamp to universal hotstick for hotline installation



WCHAWAS

- Hotstick angle wedge holder adapter attaches wedge clamp to universal hotstick for installation using shotgun stick



WHSWB

- Hotstick wirebrush attaches to universal hotstick for cleaning the contact surface of the line conductor



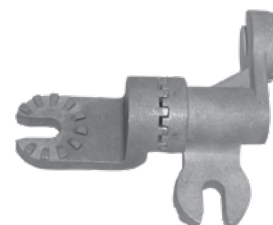
WHSGB

- Hotstick breech drive; geared shotgun hotstick adapter latches to breech end of tool without disassembly for use on energized lines



WHSTA

- Hotstick tool (actuator) hammer attaches to universal hotstick for striking the actuator button to complete installation



WHSSADP

- Hotstick spring loaded 90 degree adapter; used to attach tool to universal hotstick for hotline installations

DOMINATOR Auger Bits For Treated Wood

Series: LPHTBIT

- Single Flute
- Hardened Steel Tip
- Aggressive lead screw
- Cuts hardest of woods with very fast drilling
- Self-feeding
- 100+ Holes

For Use On:

Treated Wood

		TREATED WOOD
OAL	DIA	DOMINATOR
18"	9/16"	LPHTBIT91618D
18"	5/8"	LPHTBIT5818D
18"	11/16"	LPHTBIT111618D
18"	3/4"	LPHTBIT3418D
18"	13/16"	LPHTBIT131618D
18"	15/16"	LPHTBIT151618D
24"	11/16"	LPHTBIT111624D
24"	13/16"	LPHTBIT131624D
24"	15/16"	LPHTBIT151624D



Close up of
DOMINATOR lead screw



HIW716MAG
Hydraulic Impact Wrench



HIW716ENF
Hydraulic Impact Wrench

ENFORCER® Hydraulic Impact Wrench
Variable Torque; 7/16" Quick Chuck

Tool Series: HIW-ENF

- Industry exclusive torque selector allows switching between 200 and 515 ft-lb torque settings
- Dual spool selector for Open and Closed systems
- Cartridge style valves for greater accuracy
- Internal safety relief valve

Models:

- HIW716ENFKIT2 Wrench, eyelet, flat face couplers
HIW716ENFKIT3 Wrench, flat face couplers
HIW716ENFTGKIT1 Wrench, trigger guard,
flat face couplers



HIW716ENFTGKIT1 Hydraulic Impact Wrench shown with trigger guard, adaptors and couplers

See our line of DOMINATOR Auger Bits

Specifications:

Chuck Type:	7/16" Quick Change
Opt. Pressure:	750-2000 PSI
Flow Range:	4-12 GPM
Opt. Flow Range:	4-8 GPM
Weight:	6.0 lbs
Torque:	515 ft-lbs
Size:	9.00" x 7.75" x 3.12"
Warranty:	5 year limited warranty

Accessories:

- HIW716ENFTGKIT: Trigger guard assembly kit
LPHTADPMMOP66 SAE #6 to 3/8" NPT male-to-male adapter for use with couplers listed below (2 required)
LPHTHTMANOSE66 3/8" male coupler (flat face) with 3/8" NPT (female thread) (1 per tool; 2 per hose)
LPHTHTMABODY66 3/8" female coupler (flat face) with 3/8" NPT (female thread) (1 per tool; 2 per hose)
LPHTHOSNCR66668 3/8" X 8' hose set
LPHTADPSMFOP66 SAE swivel adapter (2 required)

*(Recommended quantity for use with HIW716ENF)

See Low Pressure Hydraulic Accessories for additional options

MAG Series Hydraulic Impact Wrench Machined Aluminum, Gerotor Design

Tool Series: HIW-MAG

- Aircraft grade extruded aluminum body, forged handle
- CNC machined parts
- Frictionless gerotor motor
- Cartridge style valve
- 7/16" Tri-ball quick change chuck
- Dual spool selector for Open & Closed systems
- "Glove-sized" wide grip activation trigger
- Inlet/Outlet SAE 6 adapters
- Reverse flow and hook-up protection
- Injection molded thermally insulated textured comfort grips
- Forward/Reverse selector



Models:

- HIW716MAGKIT1 Wrench, flat face couplers
 HIW716MAGKIT2 Wrench, swivels, 8' NCR hose, flat face couplers
 HIW716MAGKIT3 Wrench, swivels, 10' NCR hose, flat face couplers

See our line of DOMINATOR Auger Bits

Specifications:

Chuck Type:	7/16" Tri-ball quick chuck
Opt. Pressure:	1,000 - 2,000 PSI
Flow Range:	4 - 12 GPM
Opt. Flow Range:	4 - 8 GPM
Weight:	7.6 lbs
Torque:	550 ft-lbs
Size:	9.62" x 9.00" x 3.62"
Warranty:	5 year limited warranty

Accessories:

- LPHTADPMM71612 7/16" quick chuck to 1/2" square drive adapter
 LPHTADPMMOP66 SAE #6 to 3/8" NPT male-to-male adapter for use with couplers listed below (2 required)
 LPHTHTMANOSE66 3/8" male coupler (flat face) with 3/8" NPT (female thread) (1 per tool; 2 per hose)
 LPHTHTMABODY66 3/8" female coupler (flat face) with 3/8" NPT (female thread) (1 per tool; 2 per hose)
 LPHTHOSNCR66668 3/8" X 8' hose set
 LPHTHOSNCR666610 3/8" X 10' hose set
 LPHTADPSMFOP66 SAE swivel adapter (2 required)

See Low Pressure Hydraulic Accessories
for additional options

KOMPRESSOR™ Remote Operated
12 Ton Low Pressure Hydraulic Compression Tool

Tool Series: LPHY750

- Visual and audible crimp indicator
- 1.65" jaw opening covers a range of applications
- 350° head rotation
- Uses all standard BURNDY® U dies
- Crimp time approximately 2 seconds

For Use On:

Tension Sleeves

Copper	#8 sol. - 500 kcmil
Aluminum	#8 sol. - 587.2 kcmil
ACSR	#4 - 556.5 kcmil

Taps

Copper	#14 sol. - 500 kcmil
Aluminum	#8 - 500 kcmil

Aerial Cable

Copper	#6 - 500 kcmil
--------	----------------

Terminals & Splices

Copper	#8 - 750 kcmil
Aluminum	#8 - 750 kcmil
ACSR	#4 - 556.5 kcmil

HYGROUND® (Compression Grounding)

Copper	#8 - 500 kcmil
Ground Rods	1/2" - 1" diameter

Models:

LPHY750XT Standard KOMPRESSOR™ tool



LPHY750XT shown with couplers (sold separately)

Specifications:

Flow Rate:	3 - 9 GPM (11 - 34 LPM)
Operating Pressure:	1,500 - 2,500 PSI (103 - 172 BAR)
Force Developed:	12 Tons
Die Style:	U dies
Jaw Opening:	1.65"
Weight:	21.0 lbs (9.5 kg)
Size:	20.75" x 15.00" x 12.00"
Max. Back Pressure:	250 PSI (17 BAR)
Warranty:	5 year limited warranty

Accessories:

LPHTHOSNCR666680P:	Direct connect 8' non-conductive hose set
LPHTHOSNCR6666100P:	Direct connect 10' non-conductive hose set
LPHTHOSNCR66668:	*8' non-conductive hose set
LPHTHOSNCR666610:	*10' non-conductive hose set
LPHTHTMANOSE66:	Male coupler 3/8" HTMA
LPHTHTMABODY66:	Female coupler 3/8" HTMA
LPHTADPSMFOP66:	Swivel Adapter

*These hoses are used with LPHTADPSMFOP66 swivel adapter

*See Low Pressure Hydraulic Accessories
for additional options*

Hydraulic Pole Saws

Light Weight, Low Pressure Hydraulic

Tool Series: HPS-LWMAG

- Light weight, narrow kerf OREGON® bar with anti-kickback
- Optimized limb hook and chip deflector
- Cartridge style valve
- 2-stage safety trigger, anti-kickback chain and anti-slip grip
- Fiberglass tube tested at final assembly with CHANCE® Hot Stick Tester Model CC403-3178 to the value specified as per OSHA 1910.269

Models:

HPS1375LWMAG 75" overall length; 1.25" pole diameter;
13" cutting capacity;
Weight: 8.75 lbs dry, 11 lbs with oil

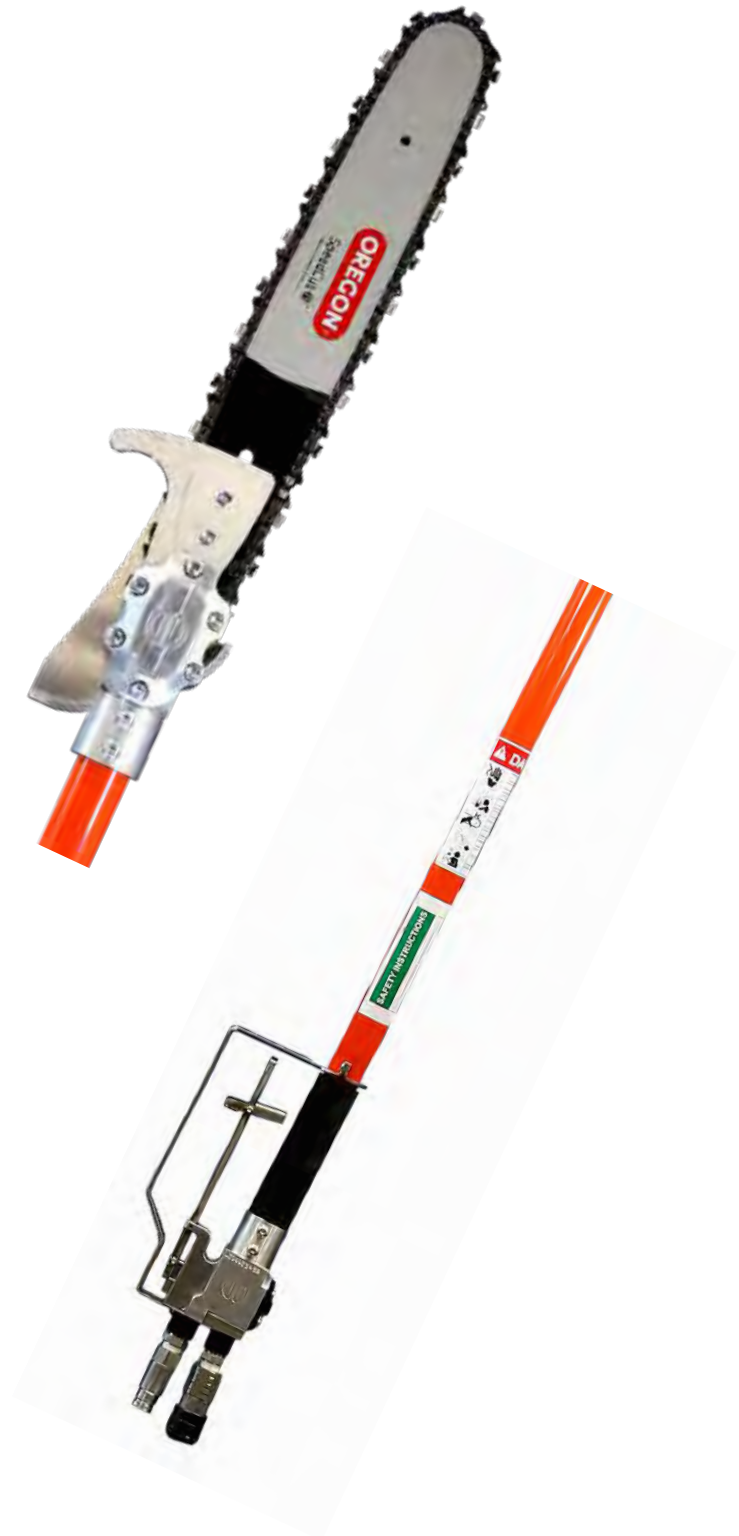
HPS1388LWMAG 88" overall length; 1.25" pole diameter;
13" cutting capacity;
Weight: 8.95 lbs dry, 11.2 lbs with oil

Specifications:

Flow:	4-8 GPM (16-30 LPM)
Pressure:	1000-2000 PSI (70-140 BAR)
Max. Back Pressure:	250 PSI (17 BAR)
Operation:	Open/Closed Center
Motor:	Gear
Chain:	.325" pitch anti-kickback
Tool Ports:	#6 SAE O-Ring
Warranty:	5 year limited warranty

Accessories:

*See Low Pressure Hydraulic Accessories
for additional options*



LPHT (Low Pressure Hydraulic Tool) Accessories

Catalog Number	Description
LPHTADPMM71612	7/16" Quick chuck adaptor x 1/2" square
LPHTADPMMOP66	ADP Male/Male SAE #6, 3/8 NPT (2 required per tool)
LPHT HOSES Red or Orange	
LPHTHOSNCR666610	Hose; Insulated, 10 foot; 3/8 NPT, 3/8 NPT
LPHTHOSNCR66668	Hose; Insulated, 8 foot; 3/8 NPT, 3/8 NPT
LPHTHOSNCR66668OP	Hose; Insulated, 8 foot, SAE #6, 3/8 NPT
LPHTHOSNCR666610OP	Hose; Insulated, 10 foot, SAE #6, 3/8 NPT
COUPLERS	
LPHTDRIPBODY66	Dripless body; 3/8 body, 3/8 NPT
LPHTDRIPNOSE66	Dripless nose; 3/8 nose, 3/8 NPT
LPC12S	3/8, 1/2 NPT Flush face coupler set (body & nose)
LPHTHTMADUSTCAPF	HTMA dust cap body
LPHTHTMADUSTCAPM	HTMA dust cap nose

NOTE:

Only the most common accessories and sizes are shown. If you don't see what you are looking for call us at Customer Service: 1-800-346-4175.

Auger Bits are featured on the Auger Bit page earlier in the catalog.

