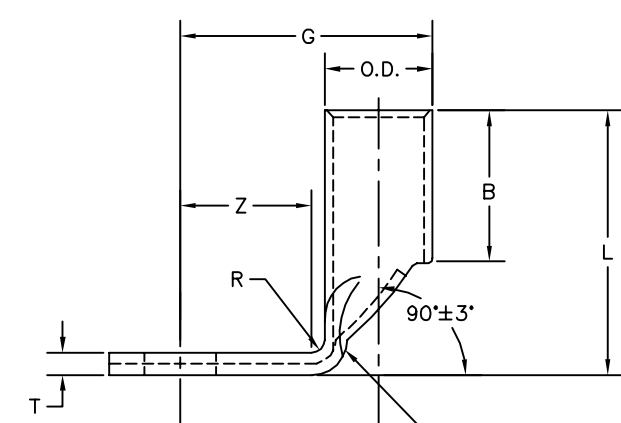
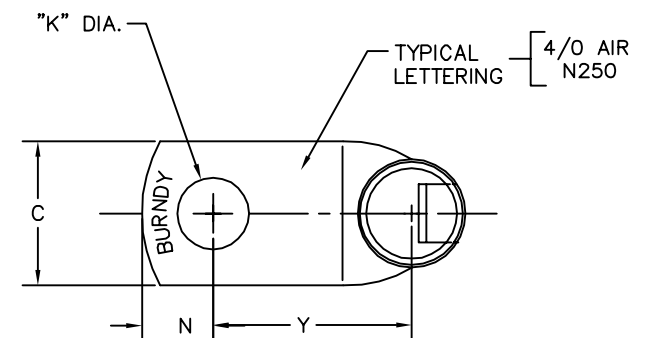


REV.	DATE	DESCRIPTION	ECO	BY	C'K'D.
F	09/16/15	L DIM. WAS 1.463 IS 1.350 FOR CAT.# YAV25RS2	41618	RG	MR

CATALOG NUMBER	COPPER AIRCRAFT CABLE MIL-W-5086	STUD SIZE	B ±.03	C ±.03	K ±.010	L ±.062	N ±.02	O.D. MAX.	R MIN.	T ±.020	Y MAX.	Z MIN.	G MAX.	INSTALLATION TOOL INDEX NUMBER							
YAV8C-RS14	AN-8	6,7 OR 8	.44	.41	.173*	.953	.20	.275	.062	.08	.618	.250	.750	38							
YAV8C-RS		8,9 OR 10		.41	.198*					.20	.08	.618	.250		.750						
YAV8C-RS1		1/4		.41	.272					.25	.08	.648	.281		.780						
YAV8C-RS2		5/16		.56	.331					.28	.06	.680	.312		.812						
YAV8C-RS3		3/8		.56	.398					.31	.06	.711	.344		.843						
YAV8C-RS4		1/2		.75	.525					.38	.04	.836	.469		.968						
YAV6C-RS1G1	AN-6	8,9 OR 10	.50	.45	.198*	.979	.25	.322	.062	.08	.670	.281	.823	39							
YAV6C-RS1		1/4		.50	.272					.25	.07	.670	.281		.823						
YAV6C-RS		5/16		.59	.331					.31	.06	.733	.344		.885						
YAV6C-RS4		3/8		.59	.398					.31	.06	.733	.344		.885						
YAV6C-RS2		1/2		.75	.525					.38	.05	.858	.469		1.011						
YAV6C-RS10		1/4		.53	.272					.25	.09	1.077	.562		1.169						
YAV4C-RS28	AN-4	8,9 OR 10	.50	.53	.198*	.997	.25	.385	.062	.09	.696	.281	.888	40							
YAV4C-RS3		1/4		.53	.272					.25	.09	.696	.281		.888						
YAV4C-RS		5/16		.62	.331					.31	.08	.770	.344		.963						
YAV4C-RS4		3/8		.62	.398					.31	.08	.770	.344		.963						
YAV4C-RS2		1/2		.81	.525					.44	.08	.896	.469		1.089						
YAV4C-RS5		7/16		.68	.413					.38	.10	.949	.344		1.350						
YAV2C-RS26	AN-2	8,9 OR 10	.62	.68	.198*	1.228	.33	.473	.062	.10	.824	.344	1.001	41							
YAV2C-RS3		1/4		.68	.272					.33	.10	.824	.344		1.001						
YAV2C-RS1		5/16		.68	.331					.33	.10	.824	.344		1.001						
YAV2C-RS2		3/8		.68	.398					.33	.10	.824	.344		1.001						
YAV2C-RS		7/16		.77	.453					.38	.09	.949	.469		1.186						
YAV2C-RS4		1/2		.77	.525					.38	.09	.949	.469		1.186						
YAV2C-RS11	3/8	.77	.525	.38	.068	.08	1.408	.938	1.644												
YAV2C-RS15	5/16	.67	.331	.33	.062	.10	1.105	.625	1.342												
YAV2C-RS30	AN-1	1/4	.62	.73	.272	1.307	.33	.525	.094	.12	.881	.344	1.144	42							
YAV1C-RS1		5/16		.73	.331					.33	.12	.881	.344		1.144						
YAV1C-RS2		3/8		.73	.398					.33	.12	.881	.344		1.144						
YAV1C-RS		1/2		.82	.525					.44	.10	1.012	.469		1.275						
YAV1C-RS3		#10		.81	.198					.39	.12	1.013	.438		1.301						
YAV25-RS5		1/4		.81	.272					.39	.12	1.013	.438		1.301						
YAV25-RS1	AN-1/0	5/16	.69	.81	.331	1.350	.39	.575	.094	.12	1.013	.438	1.301	43							
YAV25-RS2		3/8		.81	.398					.39	.12	1.013	.438		1.301						
YAV25-RS		1/2		.82	.525					.44	.11	1.044	.469		1.332						
YAV25-RS3		5/8		.92	.656					.50	.10	1.202	.625		1.490						
YAV25-RS4		1/4		.92	.272					.39	.12	1.001	.469		1.442						
YAV26-RS1		5/16		.92	.331					.39	.12	1.001	.469		1.442						
YAV26-RS2	AN-2/0	3/8	.81	.92	.398	1.583	.39	.646	.094	.12	1.001	.469	1.442	44							
YAV26-RS		1/2		.92	.525					.39	.12	1.001	.469		1.442						
YAV26-RS3		5/8		.92	.656					.50	.12	1.233	.625		1.599						
YAV26-RS12		10MM		1.02	.413					.48	.14	1.118	.469		1.473						
YAV27-RS31		AN-3/0		3/8	.81					1.02	.398	1.606	.48		.710	.094	.14	1.118	.469	1.473	45
YAV27-RS				1/2						1.02	.525						.48	.14	1.118	.469	
YAV27-RS1	5/8		1.18	.656		.53	.12	1.274	.625	1.629											
YAV27-RS15	3/8		1.12	.398		.48	.14	1.149	.469	1.540											
YAV28-RS	AN-4/0		1/2	.88		1.12	.525	1.750	.48	.782	.094			.14			1.149	.469	1.540	46	
YAV28-RS12			5/8			1.12	.656							.56			.14	1.305	.625		
YAV28-RS13		3/4	1.25		.766	.62	.13					1.369	.688	1.759							
YAV28-RS14		7/8	1.25		.906	.62	.13					1.461	.781	1.853							
YAV28-RS54																					



ALTERNATE LOCATION FOR LETTERING

NOTES:

1. MATERIAL: COPPER TUBE PER ASTM B75.
2. FINISH: TIN-PLATED PER ASTM B545.
3. FOR NICKEL PLATED HYLUG™ ADD 'NK' TO CATALOG NUMBERS.
4. TERMINAL MEET THE REQUIREMENTS OF MIL-T-7928 AND MIL-STD-1285.

TOLERANCE VARIATIONS: * ±.005
±.010
△ ±.015

REFERENCE: SD29736

TO ORDER BURNDY® PRODUCTS CALL
UNITED STATES:
1-800-346-4175 (LONDONDERRY, NH)
CANADA:
1-800-361-6975 (QUEBEC)
1-800-387-6487 (ALL OTHER PROVINCES)
FOR PRODUCT INFO: <http://www.burndy.com>

90° HYLUG™ (COPPER CABLE)	
ITEM NO:	N/A
CAT NO:	YAV-RS- (TABLE)
SCALE:	N/A
DRAWN BY:	EYV 12/30/53
CHECKER:	---
DSN APPVL:	---
MFG APPVL:	---
QC APPVL:	---
MKT APPVL:	---
PROD FAM:	---
PROJECT #:	---
DOCUMENT TYPE:	Sales
REL LEVEL:	AutoCAD
DRAWING NO	SD029023-01
REV	F
SIZE	D
SHEET 1 OF 1	

