

DRAWING NO.
SD022390

| CATALOG NUMBER | FIG. NO. | COPPER CONDUCTOR | | B | L ± .04 | O.D. ± .01 | COLOR CODE | WIRE STRIP LENGTH | NO. OF SPACES PER END |
|----------------|----------|------------------|-----------------------------------|------|------------|---------------|------------|-------------------|-----------------------|
| | | NAVY | COM'L CABLE | | | | | | |
| YS8CL | 1 | 23 (.171) | AN-8 STR. (.167) 6 SOL. (.162) | .44 | 1.00 | .27 | RED | .50 | 1 |
| YS6CL | 1 | ----- | 6 STR. (.183) | .81 | 1.75 | .29 | BLUE | .88 | 1 |
| YS5CL | 1 | 30 (.202) | 5 STR. (.206) | .81 | 1.90 | .30 | BLUE | .88 | 1 |
| YS4CL | 1 | 40 (.226) | 4 STR. (.231) | .81 | 1.75 | .34 | GRAY | .88 | 1 |
| YS3CL | 1 | 50 (.254) | 3 STR. (.261) 2 SOL. (.257) | .88 | 2.05 | .38 | WHITE | .94 | 1 |
| YS2CL | 1 | 60 (.282) | 2 STR. (.291) | .88 | 2.00 | .42 | BROWN | .94 | 1 |
| YS1CL | 1 | 75 (.317) | 1 STR. (.330) | .88 | 2.06 | .46 | GREEN | .94 | 1 |
| YS25L | 1 | 100 (.363) | 1/0 STR. (.373) | .88 | 2.08 | .51 | PINK | .94 | 1 |
| YS26L | 1 | 125 (.407) | 2/0 STR. (.418) | .94 | 2.17 | .56 | BLACK | 1.00 | 1 |
| YS27L | 1 | 150 (.457) | 3/0 STR. (.470) | 1.00 | 2.30 | .62 | ORANGE | 1.06 | 1 |
| YS28L | 1 | 200 (.514) | 4/0 STR. (.528) | 1.00 | 2.32 | .69 | PURPLE | 1.06 | 1 |
| YS29L | 1 | 250 (.577) | 250 kcmil (.575) | 1.06 | 2.46 | .75 | YELLOW | 1.12 | 1 |
| YS30L | 2 | 300 (.628) | 300 kcmil (.630) | 1.06 | 2.47 | .81 | WHITE | 1.12 | 2 |
| YS31L | 2 | 350 (.681) | 350 kcmil (.681) | 1.12 | 2.60 | .88 | RED | 1.18 | 2 |
| YS32L | 2 | 400 (.742) | 400 kcmil (.728) | 1.19 | 2.74 | .95 | BLUE | 1.25 | 2 |
| YS33L | 2 | ----- | 450 kcmil (.772) | 1.19 | 2.76 | 1.01 | GRAY | 1.25 | 2 |
| YS34L | 2 | ----- | 500 kcmil (.814) | 1.38 | 3.15 | 1.06 | BROWN | 1.44 | 2 |
| YS35L | 2 | 500 (.832) | 550 kcmil (.855) | 1.38 | 3.20 | 1.12 | YELLOW | 1.44 | 2 |
| YS36L | 2 | ----- | 600 kcmil (.893) | 1.38 | 3.22 | 1.18 | GREEN | 1.44 | 2 |
| YS37L | 2 | 650 (.936) | 650 kcmil (.929) | 1.38 | 3.23 | 1.23 | ORANGE | 1.44 | 1 |
| YS38L | 2 | ----- | 700 kcmil (.964) | 1.38 | 3.22 | 1.25 | PINK | 1.44 | 1 |
| YS39L | 2 | ----- | 750 kcmil (.998) | 1.62 | 3.72 | 1.30 | BLACK | 1.69 | 2 |
| YS40L | 2 | ----- | 800 kcmil (1.031) | 1.62 | 3.75 | 1.35 | ORANGE | 1.69 | 1 |
| YS41L | 2 | 800 (1.051) | 850 kcmil (1.062) | 1.62 | 3.76 | 1.38 | GOLD | 1.69 | 1 |
| YS44L | 2 | ----- | 1000 kcmil (1.152) | 1.88 | 4.28 | 1.49 | WHITE | 1.94 | 1 |
| YS45L | 2 | ----- | 1250 kcmil (1.289) | 2.00 | 4.60 | 1.69 | YELLOW | 2.06 | 2 |
| YS453L | 2 | 1300 (1.325) | 1300 kcmil (1.315) | 2.00 | 4.60 | 1.74 | ORANGE | 2.06 | 2 |
| YS46L | 2 | ----- | 1500 kcmil (1.412) | 2.00 | 4.40 | 1.84 | GREEN | 2.06 | 2 |
| YS47L | 2 | ----- | 1750 kcmil (1.527) | 2.19 | 5.00 | 1.98 | GRAY | 2.25 | 2 |
| YS48L | 2 | ----- | 2000 kcmil (1.631) | 2.25 | 5.17 | 2.12 | BROWN | 2.31 | 2 |

| REV | DATE | DESCRIPTION | ECO | BY | C'H'K. |
|-----|------------|--|-------|----|--------|
| J | 08/10/2011 | ADD #2 & #4 SOL TO THE DRAWING. UPDATE TOOL AND DIE OPTIONS. | 22869 | DG | MA |

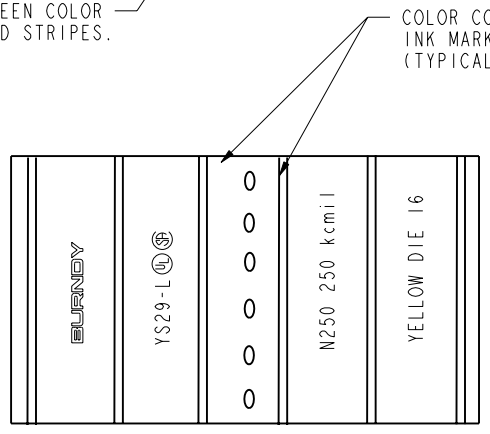
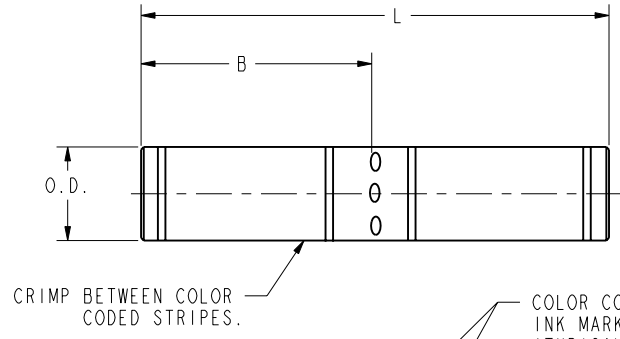


FIG. 1

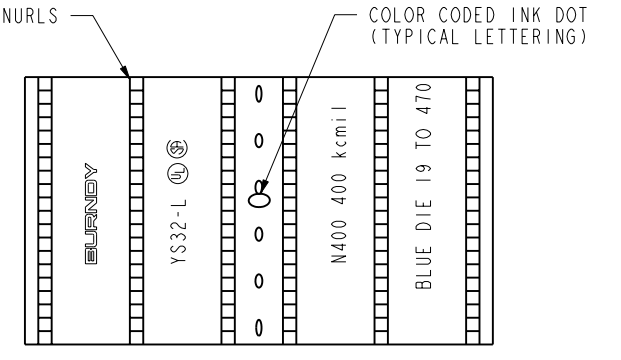
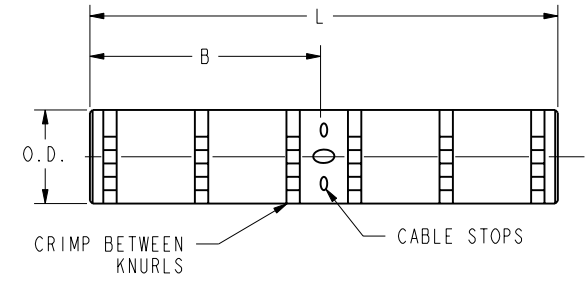


FIG. 2

- NOTES:
- FOR SILVER PLATING ON HYLINKS™ ADD SUFFIX LETTERS "LV" TO THE CATALOG NUMBER.
 - MATERIAL: COPPER TUBE.
 - FINISH: TIN PLATED.

| | | |
|----------------------------|-----------------|---------------|
| TO ORDER BURNDY® PRC | HYLINK™ | |
| | ITEM NO: 502815 | |
| CAT. NO: YS-L (TABLE) | | |
| DRAWN BY: C. RACCANO | 10/11/76 | |
| CHECKER: C. A. R | 10/12/76 | |
| DSN APPVL: -- | -- | BURNDY |
| MFG APPVL: -- | -- | |
| QA APPVL: -- | -- | |
| MKT APPVL: -- | -- | |
| PROD FAM: CM&R COMPRESSION | DRAWING NO | SCALE: 1:1 |
| PROJECT #: -- | SIZE | |
| DOCUMENT TYPE: Sales | D | SD022390 |
| REL LEVEL: Released | | SHEET 1 OF 6 |

REV: PE0200