

## Circuit Safe® JIC Enclosures

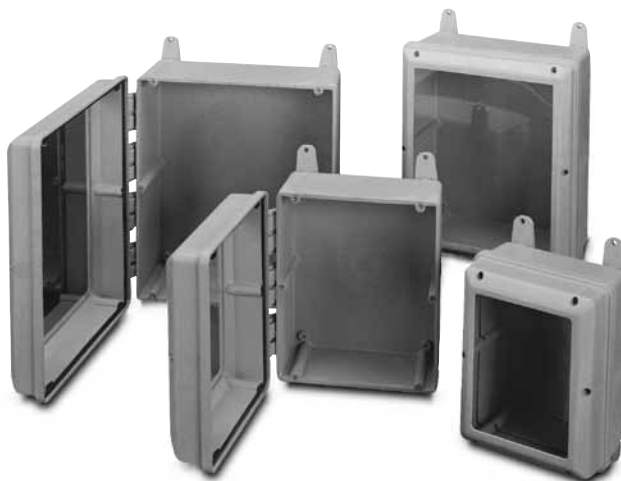
Meets NEMA 1, 3, 3S, 3X, 3SX, 4, 4X, 12, 13.



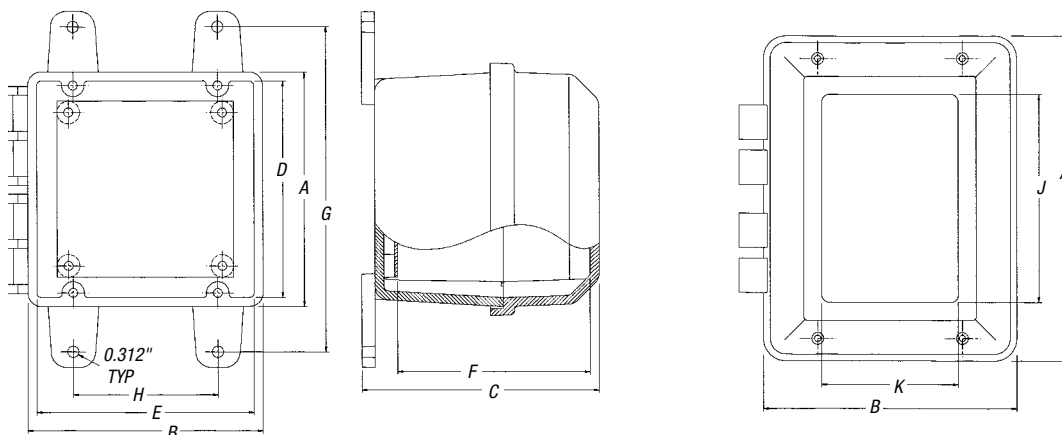
## Hinged Window Cover

### Features:

- Non-metallic mounting feet and all mounting hardware included
- 304 (18-8) stainless steel screws (10-32/1½")
- White-painted 14-gauge steel or ¼" PVC back panel (order separately)
- Completely non-metallic hinges
- Lid design provides greater usable internal volume
- Brass screw inserts
- Material: polycarbonate molded base and cover



**Note:** Window material ⅛" thick, clear polycarbonate is permanently bonded to the cover.



### Factory Assembled

CAT. NO.	DIMENSIONS (IN.)										STD. WT. (LBS.)	BACK PANEL* CAT. NO.		PANEL SIZE (IN.)	STD. WT. (LBS.)STEEL/ PVC
	EXTERNAL				INTERNAL			MOUNTING				STEEL	PVC		
	A	B	C	D	E	F	G	H	J	K					
J665W	6.50	6.50	6.69	6.00	6.00	5.45	9.00	4.00	3.75	3.75	1 (3.1)	JP66	JP66P	4.88 x 4.88	1 (1.0)/1 (0.3)
J863W	8.50	6.50	4.49	8.00	6.00	3.25	11.00	4.00	3.75	3.75	1 (3.2)	JP86	JP86P	6.75 x 4.88	1 (1.0)/1 (0.78)
J1085W	10.50	8.50	6.69	10.00	8.00	5.45	13.00	6.00	7.75	5.75	1 (5.6)	JP108	JP108P	8.75 x 6.88	1 (1.5)/1 (0.7)
J12106W	12.50	10.50	7.69	12.00	10.00	6.45	15.00	8.00	9.75	7.75	1 (7.4)	JP1210	JP1210P	10.75 x 8.88	1 (2.0)/1 (1.2)

Enclosures shipped with mounting feet, hinge caps and screws.

\*Order back panels separately.

For factory-installed pad-lockable quick-release latch (part no. CJTL), consult Customer Service for price and delivery.