

## SPECIFICATIONS

## A) SENSING SWITCH

- 1.0 Mounting Position: Diaphragm Vertical (see diag. below).
- 2.0 Set Point Range:  $0.05 \pm 0.02$ " WC to 12.0" WC.  
Pressure Rise.
- 3.0 Measured Media: Air.
- 4.0 Operating Temperature Range:  $-40^{\circ}$  to  $180^{\circ}$ F ( $-40.0^{\circ}$  to  $82.2^{\circ}$  °C).
- 5.0 Life: 100,000 Cycles Minimum At 1/2 PSI Maximum Pressure  
Each Cycle and at Maximum Rated Electrical Load.
- 6.0 Electrical Rating @ 60Hz. - Sensing Switch
- 6.1 15A @ 125, 250 or 278 VAC
- 6.2 1/8HP @ 125VAC, 1/4HP @ 250VAC.
- 7.0 Contact Arrangement: SPDT.
- 8.0 Position of Switch Contacts Before  
Pressure is Applied.

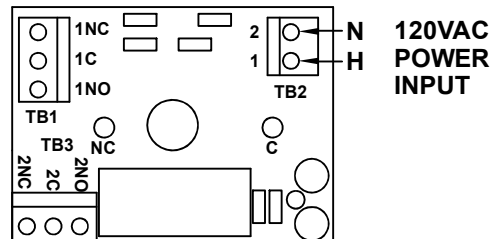


## B) DPDT ELECTRONIC MODULE

- 1.0 Electrical Rating - P.C. Board.
- 1.1 4.5VA @ 120VAC, 50/60 Hz.
- 1.2 8A @ 250VAC
- 1.3 8A @ 30VDC
- 1.4 Screw Connector, Clamp-type Terminal Blocks  
Suitable for 12-26 AWG.

## C) OPERATION

- 1.0 Shown in "On Shelf" Condition: No Power and No  
Differential Pressure Applied.
- 2.0 Note That When Power is Applied Across H and N:  
Relay K1 is Energized.  
Contacts Change State: NO Contact Closes,  
and NC Contact Opens.
- 3.0 When Differential Pressure Exceeds Set Point:  
LED Lights.  
Contacts Revert Back to "Shelf" Condition.



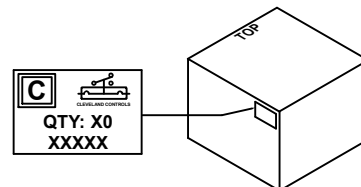
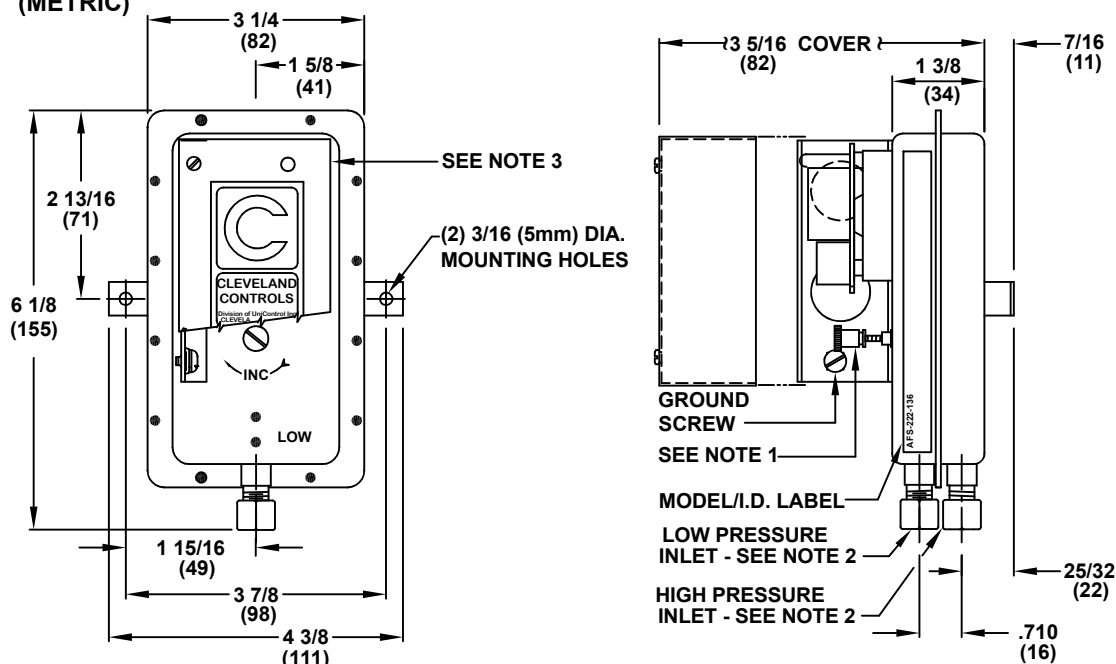
ELECTRONIC MODULE

- NOTE 1** Adjustment Screw - Turn Clockwise To Increase Set Point.
- NOTE 2** Sample Line Connectors Complete With Nut And Ferrule  
Will Accept 1/4" O.D. Tubing; i.e. Copper, Aluminum, Or Plastic.
- NOTE 3** Switch Enclosure Will Accept Two 1/2" Conduit Connections.
- NOTE 4** Approval or Recognition of Sensing Switch By: UL File MH6213;  
CSA File LR18754; Factory Mutual Systems. Timer Module  
Approved as an Accessory by UL and CUL; CSA Approval Pending.

AFS-222-136 CLEVELAND CONTROLS DIVISION OF UNICONTROL INC. CLEVELAND, OHIO USA DATE CODE	MOUNT WITH DIAPHRAGM IN ANY VERTICAL PLANE. (MONTAGE AVEC LA MEMBRANE DANS UN PLAN VERTICAL) ADJUSTABLE SET POINT RANGE: CHANGE CONTACTS ON INCREASING PRESSURE FROM .05" TO 12.0" IN. W.C. OPERATING TEMPERATURE RANGE: $-40^{\circ}$ TO $180^{\circ}$ F ( $-40^{\circ}$ TO $82^{\circ}$ °C) SAMPLE MEDIA: AIR - MAXIMUM PRESSURE: 1/2 PSI	120 VAC, TERM 1H & 2N 8A @ 250 VAC 8A @ 30 VDC RESISTIVE HOLDING TO BE 90° ± 5° USE COPPER CONDUITS ONLY	UL RoHS CE
--	--	--	------------------

DIMENSIONS  
INCHES  
(METRIC)

## MODEL ID / SET POINT LABEL

MASTER CARTON WITH LABEL  
INDICATING QUANTITY AND  
SWITCH MODEL NUMBER

CLEVELAND CONTROLS DIV. OF UNICONTROL INC. MAKES NO REPRESENTATION OR WARRANTY CONCERNING THE SUITABILITY OF THIS DEVICE FOR A SPECIFIC APPLICATION OR PRODUCT. IT IS THE RESPONSIBILITY OF THE USER TO VERIFY THE SUITABILITY OF THIS DEVICE FOR THE SPECIFIC APPLICATION. WHERE AN OPERATING CONTROL FAILURE WOULD RESULT IN PERSONAL INJURY AND/OR LOSS OF PROPERTY, IT IS THE RESPONSIBILITY OF THE USER TO ADD DEVICES OR SYSTEMS THAT PROTECT AGAINST, OR WARN OF, FAILURE OF THIS DEVICE.

## SENSING SWITCH SPECIFICATIONS

## CLEVELAND CONTROLS MODEL: AFS-222-136

A	3762-1	12/20/18	MJA	FL
REV	DCN No.	DATE	BY	CHKD
DWN	MJA	DATE	5/19/06	CHKD
FL	FL	SCALE	NONE	

THIS PRINT IS THE EXCLUSIVE PROPERTY OF CLEVELAND CONTROLS AND CANNOT BE REPRODUCED IN WHOLE OR IN PART OR ISSUED OR DISCLOSED TO THIRD PARTIES WITHOUT THE EXPRESS WRITTEN CONSENT OF CLEVELAND CONTROLS.

Cleveland Controls Division of UniControl Inc.  
1111 Brookpark Rd. Cleveland, Ohio 44109-5825

.XX =  $\pm 0.15$  .XXX =  $\pm 0.05$  ANGLES =  $\frac{1}{2}$

USED ON

SHEET 1 OF 1

A28481

A  
REV