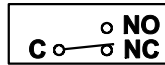


**SPECIFICATIONS**

**MODEL: AFS-262**

- 1.0 Mounting Position: Diaphragm Vertical (see diag. below).
- 2.0 Set Point Range: 0.05 ± 0.02" w.c. to 2.0" w.c. Pressure Rise.
- 2.1 Field Adjustable: "Operate Range" 0.07" w.c. to 2.0" w.c.
- 2.2 Field Adjustable: "Release Range" 0.04" w.c. to 1.9" w.c.
- 3.0 Approximate Switching Differential: Progressive Increasing From 0.02" ±.01 w.c. At Minimum Set Point To Approximately 0.1" w.c. At Maximum Set Point.
- 4.0 Measured Media: Air.
- 5.0 Operating Temperature Range: -40° to 180°F (-40.0° to 82.2 °C).
- 6.0 Life: 100,000 Cycles Minimum At 1/2 PSI Maximum Pressure Each Cycle And At Maximum Rated Electrical Load.
- 7.0 Electrical Rating.
- 7.1 300 VA pilot duty at 115 to 277 vac. } 60 Hz.
- 7.2 15a non-inductive to 277 vac.
- 8.0 Contact Arrangement: SPDT.
- 9.0 Position of Switch Contacts before Pressure is Applied.

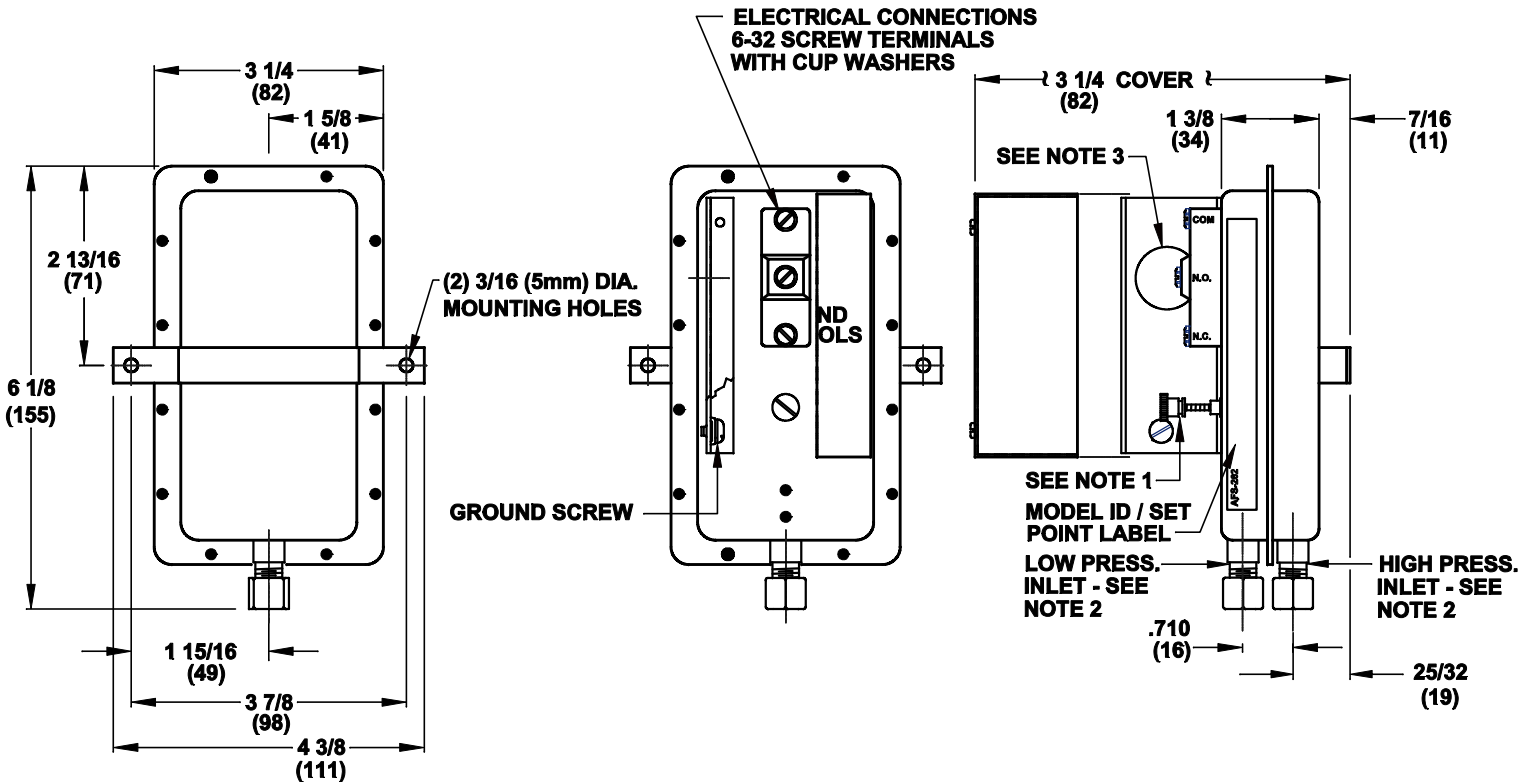


- NOTE 1** Adjustment Screw - Turn Clockwise To Increase Set Point.
- NOTE 2** Sample Line Connectors, Complete With Nut and Ferrule, Will Accept 1/4" O.D. Rigid or Semi-Rigid Tubing.
- NOTE 3** Switch Enclosure Will Accept 1/2" Conduit Connection.
- NOTE 4** Approval or Recognition By: UL File MH6213; CSA File LR18754; Factory Mutual Systems.

**DIMENSIONS  
INCHES  
(METRIC)**

<b>AFS-262</b> CLEVELAND CONTROLS DIVISION OF UNICONTROL INC. CLEVELAND, OHIO USA DATE CODE	<small>MOUNT WITH DIAPHRAGM IN ANY VERTICAL PLANE (MONTÉER AVEC LA MEMBRANE DANS UN PLAN VERTICAL) ADJUSTABLE SET POINT RANGE: CHANGE CONTACTS ON INCREASING PRESSURE FROM .05 ± .02 TO 2.0 IN. W.C. OPERATING TEMPERATURE RANGE: -40° TO 180°F (-40° TO 82° C) SAMPLE MEDIA: AIR - MAXIMUM PRESSURE: 1/2 PSI</small>	<small>300 VA PILOT DUTY AT 120 TO 277 VAC 15A NON-INDUCTIVE TO 277 VAC 50/60 HZ SEE DRAWING FOR 90°C USE COPPER CONDUCTORS ONLY</small>	
---	---	--	--

**MODEL I. D. / SET POINT LABEL**



<table border="1"> <tr><td>J</td><td>3139-14</td><td>7/19/16</td><td>RW</td><td>FL</td></tr> <tr><td>H</td><td>3139</td><td>6/21/05</td><td>MJA</td><td>FL</td></tr> <tr><td>G</td><td>EC 204</td><td>12/29/84</td><td>KK</td><td>SD</td></tr> <tr><td>F</td><td>EC 188</td><td>9/11/81</td><td>CD</td><td>SD</td></tr> <tr><td>E</td><td>EC 167</td><td>6/2/81</td><td>MG</td><td>SD</td></tr> <tr><td>REV</td><td>DCN No.</td><td>DATE</td><td>BY</td><td>CHKD</td></tr> <tr><td colspan="2">DRAWING RELEASE No.</td><td colspan="3">EC 213</td></tr> <tr><td>DWN</td><td>DATE</td><td>CHKD</td><td colspan="2" rowspan="2"><b>CLEVELAND CONTROLS MODEL: AFS-262</b></td></tr> <tr><td>MRG</td><td>4/21/80</td><td>SD</td></tr> <tr><td>CHKD</td><td>DATE</td><td>SCALE</td><td colspan="2" rowspan="2"><b>Cleveland Controls Division of UniControl Inc.</b> 1111 Brookpark Rd. Cleveland, Ohio 44109-5825</td></tr> <tr><td>BH</td><td>1/12/80</td><td>NONE</td></tr> </table>					J	3139-14	7/19/16	RW	FL	H	3139	6/21/05	MJA	FL	G	EC 204	12/29/84	KK	SD	F	EC 188	9/11/81	CD	SD	E	EC 167	6/2/81	MG	SD	REV	DCN No.	DATE	BY	CHKD	DRAWING RELEASE No.		EC 213			DWN	DATE	CHKD	<b>CLEVELAND CONTROLS MODEL: AFS-262</b>		MRG	4/21/80	SD	CHKD	DATE	SCALE	<b>Cleveland Controls Division of UniControl Inc.</b> 1111 Brookpark Rd. Cleveland, Ohio 44109-5825		BH	1/12/80	NONE	<b>SENSING SWITCH SPECIFICATIONS</b>				
J	3139-14	7/19/16	RW	FL																																																								
H	3139	6/21/05	MJA	FL																																																								
G	EC 204	12/29/84	KK	SD																																																								
F	EC 188	9/11/81	CD	SD																																																								
E	EC 167	6/2/81	MG	SD																																																								
REV	DCN No.	DATE	BY	CHKD																																																								
DRAWING RELEASE No.		EC 213																																																										
DWN	DATE	CHKD	<b>CLEVELAND CONTROLS MODEL: AFS-262</b>																																																									
MRG	4/21/80	SD																																																										
CHKD	DATE	SCALE	<b>Cleveland Controls Division of UniControl Inc.</b> 1111 Brookpark Rd. Cleveland, Ohio 44109-5825																																																									
BH	1/12/80	NONE																																																										
<b>CLEVELAND CONTROLS MODEL: AFS-262</b>					<b>USED ON</b>		<b>SHEET 1 OF 1</b>																																																					
<b>.XX = ±.015    .XXX = ±.005    ANGLES = 1</b>					<b>A18846</b>		<b>J REV</b>																																																					