



KwikSplice™ cable tray system

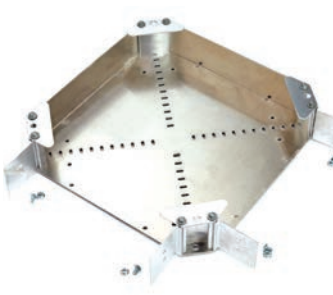
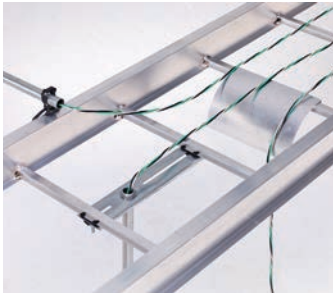
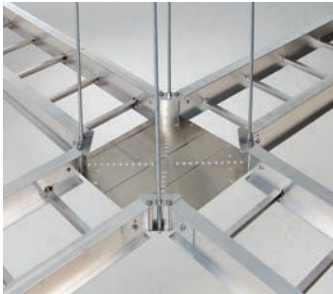
Save up to 50% on material and installation time

The KwikSplice system is a light-weight, yet durable cable management system that is rated for NEMA 12A and 12B load classes. The system is ideal for commercial, light-industrial, data center, healthcare, education and government cable management applications.

- Two bolt splice connection saves installation time
- Universal fitting eliminates field cutting
- I-beam design reduces material and enhances performance
- Utilizes standard ¼" hardware
- Helps eliminate the need for additional costly electrical grounding solutions when compared to wire basket systems
- Rated for NEMA 12A and 12B (CSA class C & D) load classes
- Stocked in multiple locations in U.S. and Canada for quick turnaround. See list of stocked items on the back.
- For more information and a complete list of KwikSplice part numbers, please visit: www.cooperbline.com/KwikSplice



Powering Business Worldwide



KwikSplice™ Cable Tray (NEMA 12A and 12B) STOCK LIST

Straight Sections

Material Number	Part Number	Description
12498789	KSA4A09-12-144	NEMA 12A, 4" side rail, 9" rung spacing, 12" width, 144" length
12498820	KSA4A09-18-144	NEMA 12A, 4" side rail, 9" rung spacing, 18" width, 144" length
12498821	KSA4A09-24-144	NEMA 12A, 4" side rail, 9" rung spacing, 24" width, 144" length
12498822	KSB4A09-12-144	NEMA 12B, 4" side rail, 9" rung spacing, 12" width, 144" length
12498823	KSB4A09-18-144	NEMA 12B, 4" side rail, 9" rung spacing, 18" width, 144" length
12498824	KSB4A09-24-144	NEMA 12B, 4" side rail, 9" rung spacing, 24" width, 144" length
12498825	KSB6A09-12-144	NEMA 12B, 6" side rail, 9" rung spacing, 12" width, 144" length
12498826	KSB6A09-18-144	NEMA 12B, 6" side rail, 9" rung spacing, 18" width, 144" length
12498827	KSB6A09-24-144	NEMA 12B, 6" side rail, 9" rung spacing, 24" width, 144" length

Horizontal Bends

Material Number	Part Number	Description
12498828	KS4A09-12-90HB12	Horizontal Bend, 4" side rail, 12" width, 90 degree bend, 12" radius
12498829	KS4A09-18-90HB12	Horizontal Bend, 4" side rail, 18" width, 90 degree bend, 12" radius
12498830	KS4A09-24-90HB12	Horizontal Bend, 4" side rail, 24" width, 90 degree bend, 12" radius
12498831	KS6A09-12-90HB12	Horizontal Bend, 6" side rail, 12" width, 90 degree bend, 12" radius
12498832	KS6A09-18-90HB12	Horizontal Bend, 6" side rail, 18" width, 90 degree bend, 12" radius
12498833	KS6A09-24-90HB12	Horizontal Bend, 6" side rail, 24" width, 90 degree bend, 12" radius

Horizontal Tees

Material Number	Part Number	Description
12498834	KS4A09-12-HT12	Horizontal Tee, 4" side rail, 12" width, 12" radius
12498835	KS4A09-18-HT12	Horizontal Tee, 4" side rail, 18" width, 12" radius
12498836	KS4A09-24-HT12	Horizontal Tee, 4" side rail, 24" width, 12" radius
12498837	KS6A09-12-HT12	Horizontal Tee, 6" side rail, 12" width, 12" radius
12498838	KS6A09-18-HT12	Horizontal Tee, 6" side rail, 18" width, 12" radius
12498839	KS6A09-24-HT12	Horizontal Tee, 6" side rail, 24" width, 12" radius

Vertical Inside/Vertical Outside Bends

Material Number	Part Number	Description
12498840	KS4A09-12-90VO12	Vertical Outside Bend, 4" side rail, 12" width, 90 degree bend, 12" radius
12498841	KS4A09-18-90VO12	Vertical Outside Bend, 4" side rail, 18" width, 90 degree bend, 12" radius
12498842	KS4A09-24-90VO12	Vertical Outside Bend, 4" side rail, 24" width, 90 degree bend, 12" radius
12498843	KS4A09-12-90VI12	Vertical Inside Bend, 4" side rail, 12" width, 90 degree bend, 12" radius
12498844	KS4A09-18-90VI12	Vertical Inside Bend, 4" side rail, 18" width, 90 degree bend, 12" radius
12498845	KS4A09-24-90VI12	Vertical Inside Bend, 4" side rail, 24" width, 90 degree bend, 12" radius
12498846	KS6A09-12-90VO12	Vertical Outside Bend, 6" side rail, 12" width, 90 degree bend, 12" radius
12498847	KS6A09-18-90VO12	Vertical Outside Bend, 6" side rail, 18" width, 90 degree bend, 12" radius
12498848	KS6A09-24-90VO12	Vertical Outside Bend, 6" side rail, 24" width, 90 degree bend, 12" radius
12498849	KS6A09-12-90VI12	Vertical Inside Bend, 6" side rail, 12" width, 90 degree bend, 12" radius
12498850	KS6A09-18-90VI12	Vertical Inside Bend, 6" side rail, 18" width, 90 degree bend, 12" radius
12498851	KS6A09-24-90VI12	Vertical Inside Bend, 6" side rail, 24" width, 90 degree bend, 12" radius

Universal Fitting

Material Number	Part Number	Description
12502088	KS4A-UF-12	Universal Fitting, fits 4" side rail, 12" width
12502150	KS4A-UF-18	Universal Fitting, fits 4" side rail, 18" width
12502151	KS4A-UF-24	Universal Fitting, fits 4" side rail, 24" width
12502616	KS6A-UF-12	Universal Fitting, fits 6" side rail, 12" width
12502617	KS6A-UF-18	Universal Fitting, fits 6" side rail, 18" width
12502618	KS6A-UF-24	Universal Fitting, fits 6" side rail, 24" width

Accessories

Material Number	Part Number	Description
12496677	KSA-12CT	12" tab and lock trapeze hanger
12499809	KSA-18CT	18" tab and lock trapeze hanger
12499820	KSA-24CT	24" tab and lock trapeze hanger
12499205	KS4A-SSP	4" standard splice plate (hardware included)
12499333	KS6A-SSP	6" standard splice plate (hardware included)
12499514	KS4A-VSP	4" vertical adjustable splice plate (hardware included)
12499516	KS6A-VSP	6" vertical adjustable splice plate (hardware included)
78101199221	9ZN-1204	Hold Down Clamp
12496678	KSA-SDO-06	6" length side rail drop out (fits all KwikSplice side rail heights)

Eaton is a registered trademark.

All other trademarks are property of their respective owners.

Follow us on social media to get the latest product and support information.

