

CURRENT TRANSFORMER

Model 19

APPLICATION:
Metering.

FREQUENCY:
50-400 Hz.

INSULATION LEVEL:
600V, 10 kV BIL full wave.

REGULATORY AGENCY APPROVALS



E93779

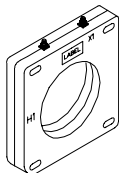


LRB9403

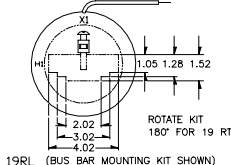
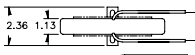
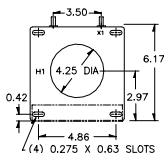
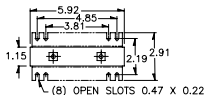
Manufactured to meet the requirements of ANSI/IEEE C57.13.
Classified by UL in accordance with IEC 44-1

- SHT terminals are brass studs No. 8-32 with one flatwasher, lockwasher and regular nut.
- RT terminals are brass studs No. 10-32 with one flatwasher, lockwasher and regular nut.
- Flexible leads are UL 1015, 105°C CSA approved, #16AWG, 24" long.
- Non-standard lead length can be specified.
- Order mounting bracket kit 0221B00183 separately for Model 19SHT.
- Order bus bar mounting kit 0221A26075 separately, factory installed.
- Approximate weight 3 lbs.

Window Diameter 4.25"

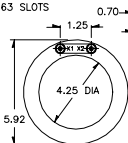
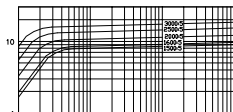


19SHT

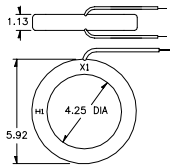


19RL (BUS BAR MOUNTING KIT SHOWN)

EXCITATION CURVE

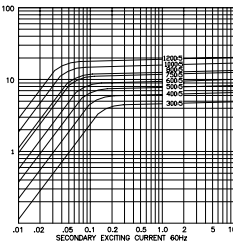


19RT



19RL

SECONDARY VOLTAGE 60 Hz



CATALOG NUMBER	CURRENT RATIO	VA FOR ±1% CLASS	ANSI METERING CLASS AT 60 Hz				SECONDARY WINDING RESISTANCE (OHMS @ 75°C)	CONTINUOUS THERMAL RATING FACTOR
			B0.1	B0.2	B0.5	B0.9		
19 --301	300:5	4.0	0.6	1.2	2.4	—	0.048	2.0 2.0
19 --401	400:5	10.0	0.3	0.6	1.2	—	0.064	2.0 2.0
19 --501	500:5	15.0	0.3	0.6	1.2	—	0.067	2.0 1.5
19 --601	600:5	15.0	0.3	0.3	0.6	1.2	0.116	2.0 1.5
19 --751	750:5	25.0	0.3	0.3	0.6	0.6	0.145	1.5 1.33
19 --801	800:5	30.0	0.3	0.3	0.6	0.6	0.155	1.5 1.33
19 --102	1000:5	30.0	0.3	0.3	0.6	0.6	0.242	1.33 1.0
19 --122	1200:5	40.0	0.3	0.3	0.3	0.6	0.291	1.33 1.0
19 --152	1500:5	15.0	0.3	0.3	0.6	1.2	0.200	1.5 1.0
19 --162	1600:5	15.0	0.3	0.3	0.3	0.6	0.213	1.5 1.0
19 --202	2000:5	20.0	0.3	0.3	0.3	0.6	0.266	1.33 1.0
19 --252	2500:5	20.0	0.3	0.3	0.3	0.3	0.333	1.0 0.8
19 --302	3000:5	25.0	0.3	0.3	0.3	0.3	0.399	1.0 0.8

** NOTE: When ordering, prefix catalog number with model designation required. i.e. 19RL-301, or 19SHT-301 etc.