

Blank Bodies With Mounting Lugs for Drilling and Tapping Single Gang, Multi-Gang, Tandem

Application:

- Blank cast device boxes are used:
 - where several wiring devices are to be grouped together
 - to assemble special combinations of wiring devices
 - where special arrangements of conduit hubs or entrances are required

Features:

- Available in shallow (FS) or deep (FD) configurations.
- FS/FD bodies have thick walls for drilling and tapping conduit entrances.
- Internal green ground screw standard on boxes.
- Available in single, two, three, four and five gang and two gang tandem bodies.
- Cast mounting lugs at diagonally opposite corners.
- Wide selection of standard surface or flush covers listed on pages 35 to 44.

Standard Materials:

- *Feraloy* iron alloy

Standard Finishes:

- *Feraloy* – electrogalvanized and aluminum acrylic paint

Certifications and Compliances:

- UL Standard: 514A
- CSA Standard: C22.2 No. 18



FS019
FD019
single gang



FS029
FD029
two gang



FS039, FD039 three gang



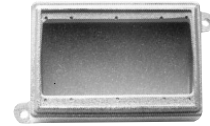
FD04 four gang



FD05 five gang



FS062
FD062
two gang



FS063
FD063
three gang



FS094
FD094
four gang



FS097
FD097
Two gang tandem

Ordering Information

Description	Shallow Deep	
	Cat. #	Cat. #
Single gang	FS019	FD019*
Two gang	FS029	FD029*
Three gang	FS039	FD039*
Four gang		FD04
Five gang		FD05
Two gang (takes one two gang cover)	FS062	FD062
Three gang (takes one three gang cover)	FS063	FD063
Four gang (takes one four gang cover)	FS094	FD094
Two gang tandem	FS097	FD097

* Available in copper-free aluminum. To order add suffix SA to Cat. No.

Ordering Information:

To order one of the blank bodies with drilled and tapped holes listed on page 31, proceed as follows:

Step 1

Select the required box.

Step 2

Select the arrangement that meets the requirements from Table 1.

Step 3

Determine the maximum size and spacing of conduit openings from Table 2.

Step 4

Substitute the appropriate symbol from Table 4 for each conduit entrance, using "0" (zero) for those locations where an entrance is not required.

Example:

Step 1 – box required FS062

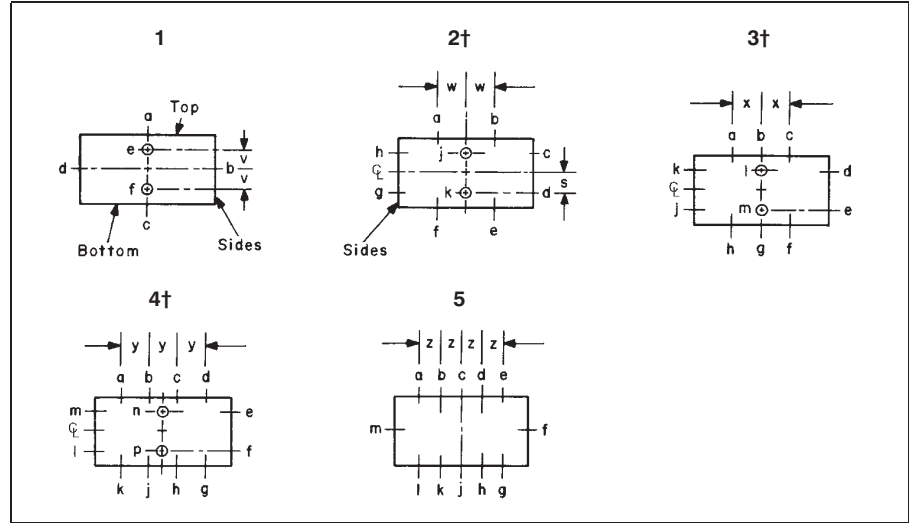
Step 2 – arrangement 1

Step 3 – conduit entrances – 1/2" at "a", none at "b"; 1" at "c" and "d"; none at "e" and "f".

Step 4 – symbols are substituted and written in **alphabetical order starting with location "a"**. For this example **A0CC00**.

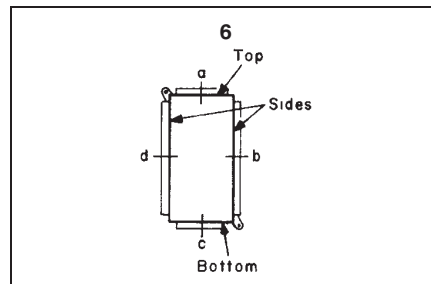
Complete Cat. No. is made up of three parts: Part 1 – box number; Part 2 – arrangement number; Part 3 – symbols for conduit entrances. For this example: **FS062-1-A0CC00**.

Table 1/Drilling and Tapping Arrangements*
Two, Three, Four and Five Gang

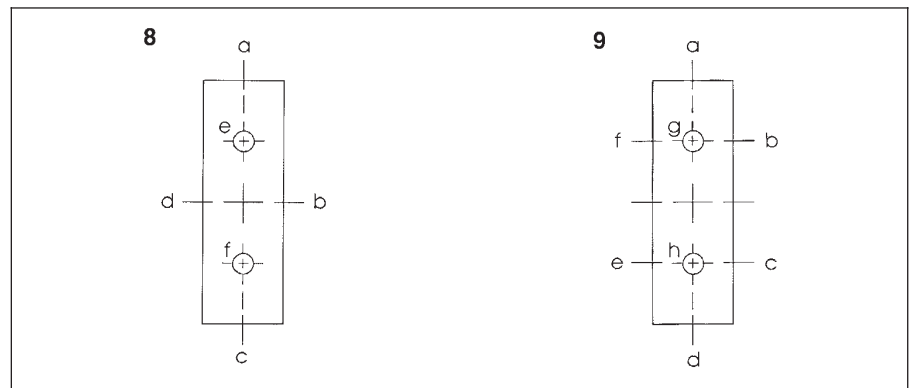


† If only one conduit entry is specified or permitted (see Table 2) on a side wall that conduit entry will be centered on the wall.

Single Gang Only (FS or FD019)



Two Gang Tandem (FS or FD097)



* Drilling and tapping arrangements other than those in Table 1 are available. Consult Cooper Crouse-Hinds.

Blank Bodies for Drilling and Tapping Ordering Information

Table 2/Maximum Number, Size and Spacing of Conduit Openings

Cat. #	Maximum Conduit Opening Size										Spacings				
	Top and Bottom					Sides		Back							
	1	2	3	4	5	1	2	2	s	v	w	x	y	z	
FS019	1					1									
FD019	1½					1½									
FS029	1	1	1	¾		1					1⅞	1⅞	1⅝		
FD029	1½	1½	1	¾		1½					1⅞	1⅞	1⅝		
FS039	1	1	1	1	1	1					3¾	3¾	2½	1⅞	
FD039	1½	1½	1½	1½	1	1½					3¾	3¾	2½	1⅞	
FD04	1½	1½	1½	1½		1½	1	1		1⅜	1⅞	3¾	3¾		
FD05	1½	1½	1½	1½	1½	1½	1	1		1⅜	3¾	3¾	3¾	3¾	
FS062	1	1	¾			1	1	1		1¼	29/32	1⅝			
FD062	1½	1¼	¾			1½	1	1¼	1	1	1	1⅜			
FS063	1	1	1	¾		1	1	1		1¼	1⅜	1⅜	1⅝		
FD063	1½	1¼	1	¾		1½	1	1¼	1	1	1⅜	2	1⅞		
FS094	1	1	1	1	¾	1	1	1		1¼	1⅜	1⅜	1⅜	1⅝	
FD094	1½	1½	1½	1	¾	1½	1	1		1⅞	1½	2⅝	1⅜	1⅝	
FS097	1	½				1	1	1½		1⅝	¾				
FD097	1½	1½				1½	1½	1½		1⅝	¾				

3F Cast Device Boxes

Table 3/Distance From Mounting Surface to Centerline of Conduit Opening (“u”)

Cat. #	u
FS019	29/32
FD019	1⅜
FS029	29/32
FD029	1⅜
FS039	31/32
FD039	1⅜
FD04	1⅜
FD05	1⅜
FS062	1⅝
FD062	1⅝
FS063	1⅝
FD063	1⅝
FS094	1⅝
FD094	1⅜
FS097	1⅝
FD097	1⅜

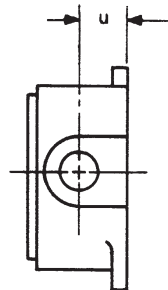


Table 4/Symbols for Openings

Conduit Size	Symbol
½	A
¾	B
1	C
1¼	E
1½	F
None	0

