

SOLID STATE RELAYS

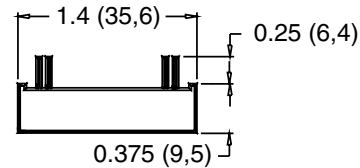
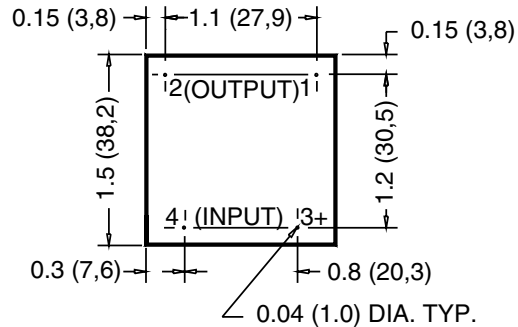
GA1, GA8, SERIES

- High Current Thyristor for 100A Surge Capability
- UL Recognized/Horse Power Rated (GA8) (E46203)
- 4KV Optical Isolation

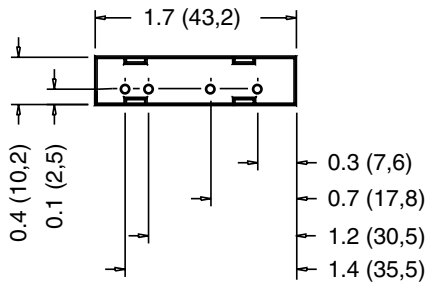
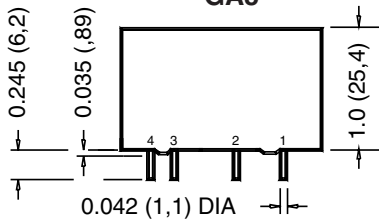
- Zero Voltage Turn-On
- Industry Standard Packaging, SIP or Flat Pack
- Form A Output
- CE Compliant



GA1

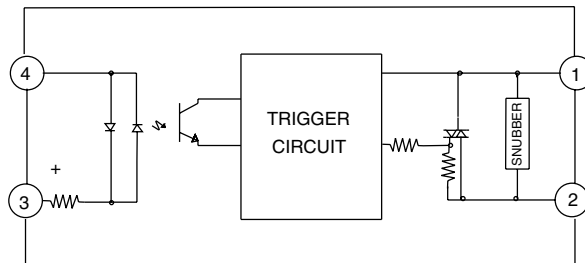


GA8



DIMENSIONS: inches (mm)
TOLERANCE: ±0.020 (±0,50)

DIMENSIONS: inches (mm)
TOLERANCE: ±0.020 (±0,50)



GA1 & GA8 SERIES DC INPUT
 EQUIVALENT CIRCUIT

Products and specifications subject to change without notice.
 Consult factory for application assistance.

SOLID STATE RELAYS

GA1, GA8, SERIES

INPUT SPECIFICATIONS: (1)

| Parameter | GA16B02 | GA86D05 | Units |
|------------------------------|-------------------|----------|-------|
| | GA86B02 | GA86D05R | |
| Minimum Turn-On Voltage | 3.0 | 3.0 | VDC |
| Maximum Input Voltage | 28 | 28 | VDC |
| Drop Out Voltage | 1.0 | 1.0 | VDC |
| Maximum Input Current (2) | 16 | 16 | mADC |
| Nominal Input Resistance (3) | Current Regulated | | |

OUTPUT SPECIFICATIONS:

| Model Number | GA16B02 (10) | GA86D05 | Units |
|-----------------------------------|--------------|----------|-------|
| | GA86B02 | GA86D05R | |
| Parameter | | | |
| Nominal Line Voltage | 240 | 240 | Vrms |
| Minimum Line Voltage | 24 | 24 | Vrms |
| Maximum Line Voltage | 280 | 280 | Vrms |
| Maximum Peak Off-State Voltage(4) | ±600 | ±600 | Vpeak |
| Static (Off-State) dv/dt | 200 | 200 | V/μS |

| Parameter | GA16B02 | GA86D05 | Units |
|-------------------------------|---------|----------|-------|
| | GA86B02 | GA86D05R | |
| Maximum On-State Current (5) | 4.0 | 5.0 | Arms |
| Minimum On-State Current | .05 | .05 | Arms |
| Maximum 1-Cycle Surge (6) | 100 | 100 | Apeak |
| On-State Voltage Drop (7) | 1.6 | 1.6 | Vpeak |
| Maximum Off-State Leakage (8) | | | |
| 240V Models | .1 | .1 | mArms |
| HP Rating (11) | 1/4 | 1/4 | H.P. |

GENERAL SPECIFICATION: (1)

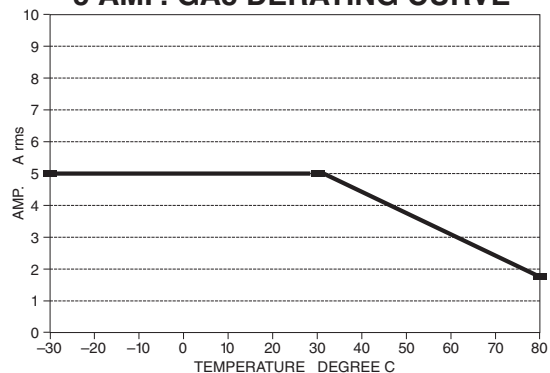
| Parameter | All Devices | Units |
|---------------------------------------|-------------|-------|
| Operating Temperature Range | -30 to +80 | °C |
| Storage Temperature Range | -40 to +100 | °C |
| Response Time (12) | .5 | Cycle |
| Input to Output Isolation Voltage (9) | 4000 | Vrms |
| Capacitance Input to Output (Typ) | 8 | pF |
| Line Frequency Range | 47 to 63 | Hz |

Note: GA1-2B and GA1-4B have been replaced by GA1-6B
GA8-2B and GA8-4B have been replaced by GA8-6B

Notes:

- (1) Specifications apply to Ta -30 TO +80 unless otherwise noted.
- (2) At maximum input voltage.
- (3) Does not include IRED impedance (drop).
- (4) One minute maximum duration when applied as a DC Voltage.
- (5) At Ta of 20°C, derate by 25 mA/°C to 40°C, 50 mA/°C from 40°C to 80°C. UL rating is 3.5 Arms, CSA rating is 3.0 Arms.
- (6) At Ta of 25°C, non-repetitive.
- (7) At Ta of 25°C and maximum on-state current.
- (8) At Ta of 25°C and maximum line voltage.
- (9) At Ta of 25°C, for one second.
- (10) Random turn-on versions available. Specify by adding suffix "R" to appropriate part number. Contact factory for additional details.
- (11) For GA8 only, 1/4 H.P. at 240 VAC, 1/8 HP at 120 VAC
- (12) AT 60 Hz 100 μS for Random Turn-on (suffix "R") models

5 AMP. GA8 DERATING CURVE



Products and specifications subject to change without notice.
Consult factory for application assistance.