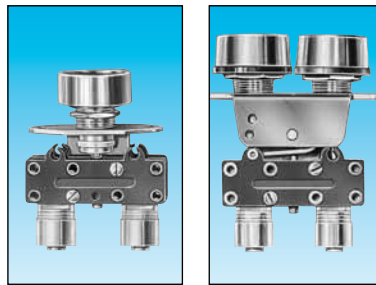


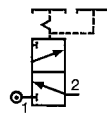
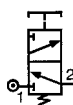
# Push buttons diameter 12 and actuators



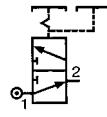
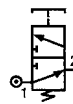
Features	Actuator color	Valve color	Push button round	Push button double round
Version	NC	black	81 735 511	—
		red	81 735 512	—
	NO	black/red	—	81 733 511
		black	grey	81 735 011
	red	grey	—	—
	black/red	grey	—	—

## Symbol

NC



NO

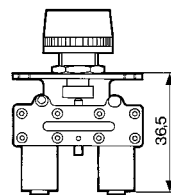


## Characteristics

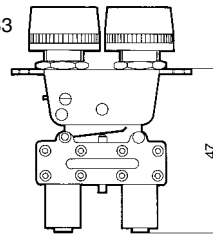
Operating pressure	bar	2 → 8	2 → 8
Orifice diameter	mm	2.7	2.7
Flow at 6 bars	l/min.	200	200
Valves	NC : black NO : grey	●	●
Operating forces (depending on actuator)	N	8 → 18	8 → 18
Effective travel	mm	1	1
Fluid: dry or lubricated air		●	●
Push-in connectors for semi-rigid tubing (NFE 49100)	mm	Ø 4	Ø 4
Operating temperature	°C	-5 → +50	-5 → +50
Mechanical life	operations	1.5 x 10 <sup>6</sup>	1.5 x 10 <sup>6</sup>
Weight	g	35	40

## Dimensions

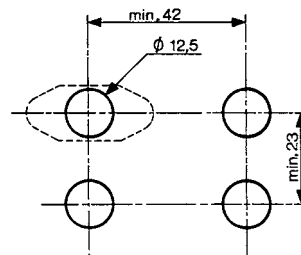
81 735



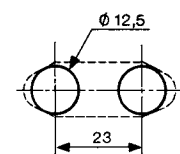
81 733

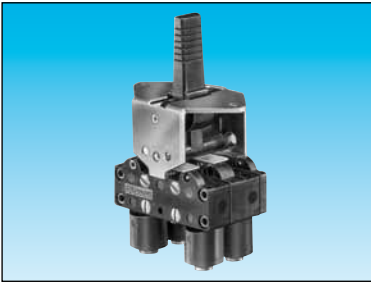


Threaded barrel



2 threaded barrels

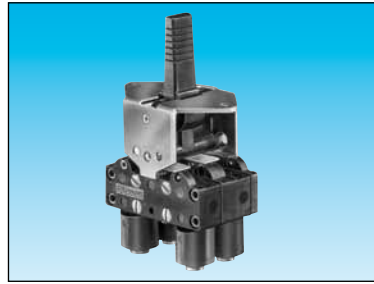




3-position lever  
manual return

81 716 511  
81 716 512

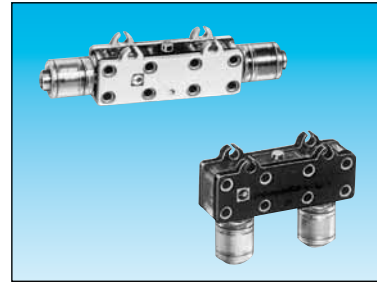
—
—
—
—



3-position lever  
spring return

81 715 511  
81 715 512

—
—
—
—



Horizontal outputs

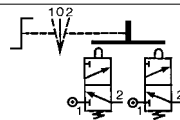
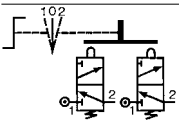
Vertical outputs

81 280 510  
—

81 281 510  
—

81 280 010
—
—

81 281 010
—
—



2 → 8  
2.7  
200

•

8 → 18  
1

•

Ø 4

-5 → +50  
1.5 x 10<sup>6</sup>  
65

2 → 8  
2.7  
200

•

8 → 18  
1

•

Ø 4

-5 → +50  
1.5 x 10<sup>6</sup>  
65

2 → 8  
2.7  
200

—

—

—

Ø 4

-5 → +50  
1.5 x 10<sup>6</sup>  
14

2 → 8  
2.7  
200

—

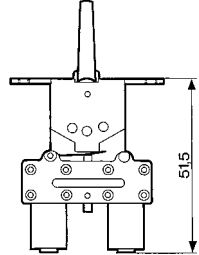
—

—

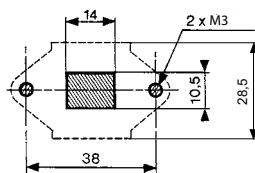
Ø 4

-5 → +50  
1.5 x 10<sup>6</sup>  
14

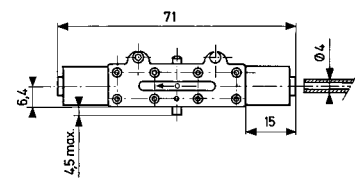
81 715 - 81 716



Square lever



81 280 010 - 81 280 510



81 281 010 - 81 281 510

