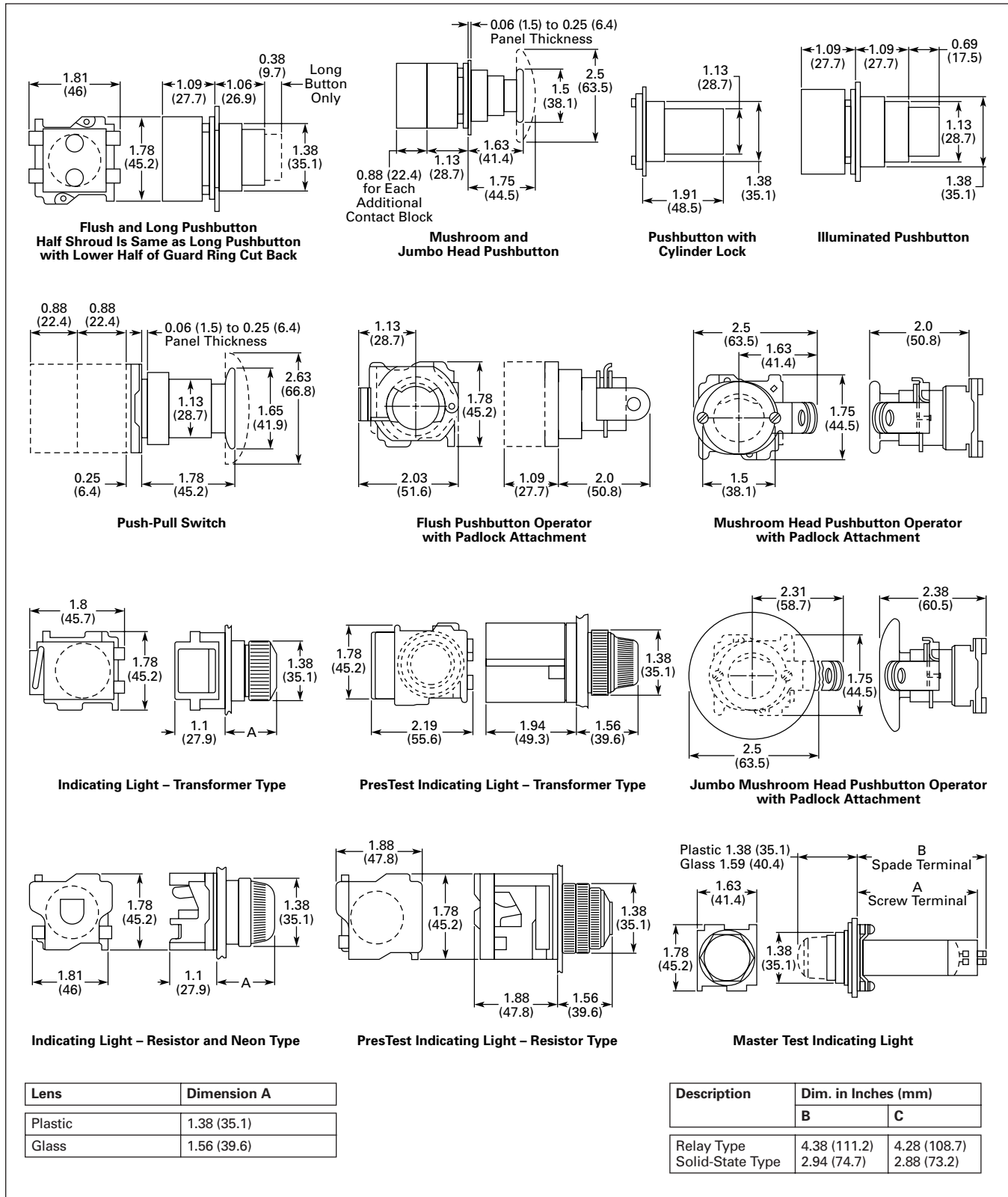


10250T Series, Dimensions

Dimensions



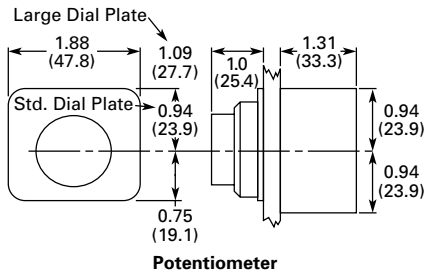
47

Lens	Dimension A
Plastic	1.38 (35.1)
Glass	1.56 (39.6)

Description	Dim. in Inches (mm)	
	B	C
Relay Type	4.38 (111.2)	4.28 (108.7)
Solid-State Type	2.94 (74.7)	2.88 (73.2)

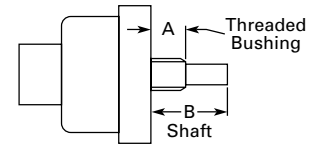
Figure 47-119. Approximate Dimensions in Inches (mm)

10250T Series, Dimensions



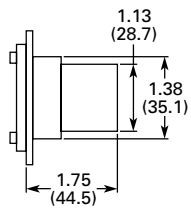
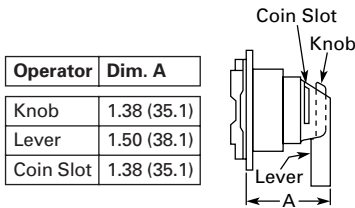
Potentiometer

Potentiometer	Dimensions in Inches (mm)		
	A	B	C
2 Watt Single	1.31 (33.3)	0.94 (23.9)	0.94 (23.9)
25 Watt — Up to 25M Ohms	2.38 (60.5)	1.19 (30.2)	0.81 (20.6)
50M Ohms	2.56 (65)	1.69 (42.9)	1.25 (31.8)

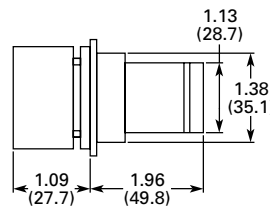


Shaft Dimensions of Potentiometer That C-H Operator Will Accept

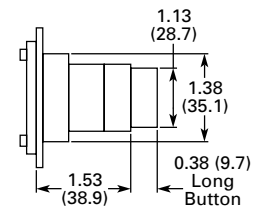
Cat. No. Operator	Dimensions in Inches (mm)	
	A	B
10250T330	0.38 (9.7) Dia. x 0.38 (9.7) Long	0.25 (6.4) Dia. x 0.63 (16) Long
10250TH3872	0.38 (9.7) Dia. x 0.38 (9.7) Long	0.25 (6.4) Dia. x 0.88 (22.4) Long



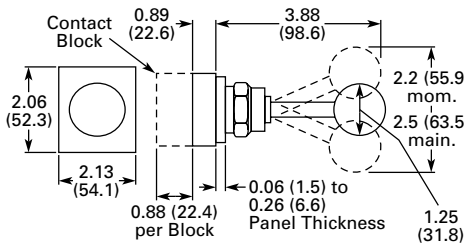
Key Operated Selector Switch



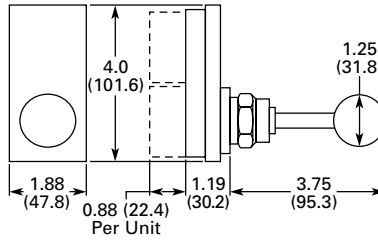
Illuminated Selector Switch



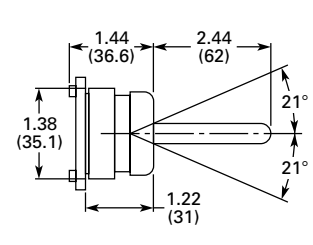
Roto-Push



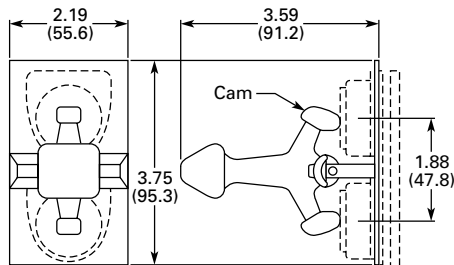
2-Position Joystick Operator



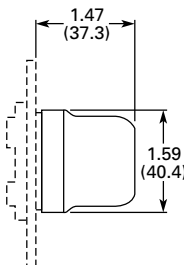
4-Position Joystick Operator



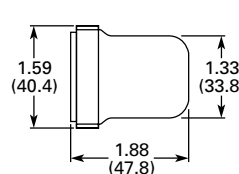
**Wobble Stick
Catalog No. 10250TA5**



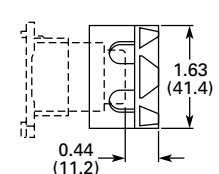
**Lever Operator
(For Use with Two Vertically Mounted Flush Pushbuttons)
Catalog No. 10250TA14**



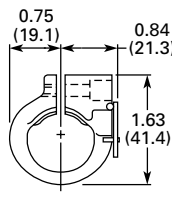
**Flexible Boot for Protecting Flush or Long Pushbutton
Catalog No. 10250TA3
Typical**



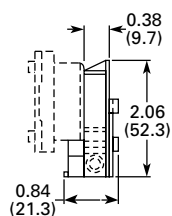
**Transparent Flexible Boot for Illuminated Pushbutton
Catalog No. 10250TA25**



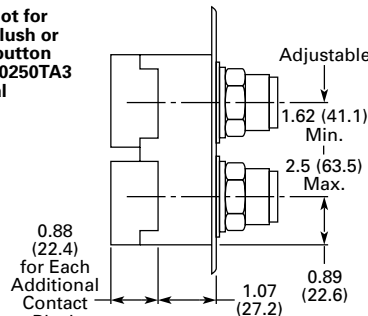
**Padlock Attachment for Knob Selector Switch
Catalog No. 10250TA11**



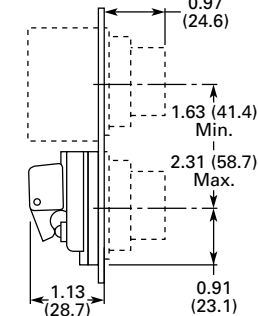
**Padlock Attachment for Flush Pushbutton
Catalog No. 10250TA2**



**Padlock Attachment for Extended Pushbutton
Catalog No. 10250TA26**



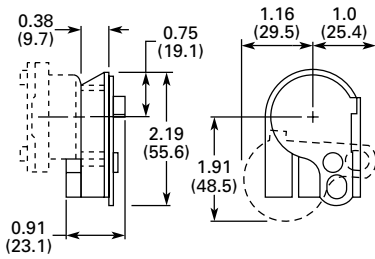
**Maintained Pushbutton
Catalog No. 10250TA66 Typical**



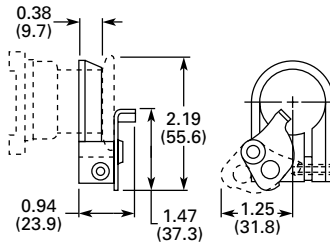
**Maintained Contact Attachment
Catalog No. 10250TA17 Typical**

Figure 47-120. Approximate Dimensions in Inches (mm)

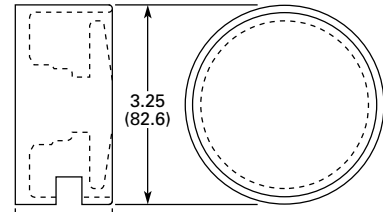
10250T Series, Dimensions



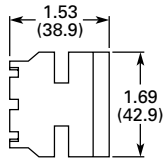
Padlock Cover Gaurd for Flush Pushbutton
 Catalog No. 10250TA36



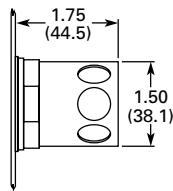
Padlock Attachment for Maintained Push-Pull Operator
 Catalog No. 10250TA64



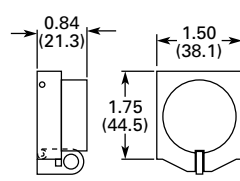
Protecting Shroud for Jumbo Mushroom Head Button
 Catalog No. 10250TA56



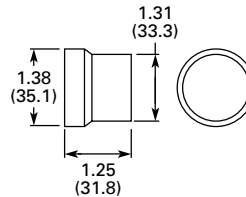
Protecting Shroud for Mushroom Head Button
 Catalog No. 10250TA6



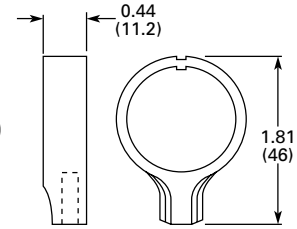
Protecting Shroud for Illuminated Pushbutton
 Catalog No. 10250TA15



Padlock Hasp or Flip-Up Guard
 Catalog No. 10250TA38

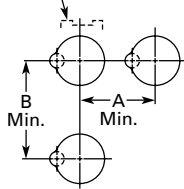


Extended Retaining Nut
 Catalog No. 10250TA12

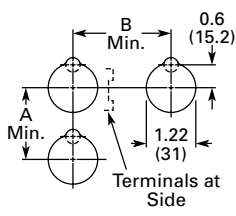


Lever for Roto-Push Operator
 Catalog No. 10250TA13

Terminals on Top



Horizontal Rows



Vertical Rows

Panel Drilling and Minimum Spacing

Legend Plate	Dim. in Inches (mm)	
	A Min.	B Min.

1 or 2 Circuit Contact Blocks

Small or None	1.63 (41.4)	2.25 (57.2)
Standard	1.75 (44.5)	2.25 (57.2)
Jumbo ①	2.25 (57.2)	2.25 (57.2)
Extra Large	2.50 (63.5)	2.60 (66)

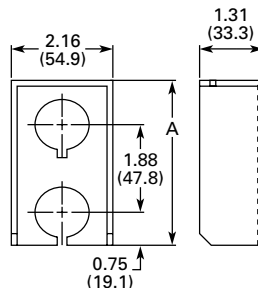
4 Circuit Contact Block 10250T44

Small or None	1.88 (47.8)	2.25 (57.2)
Standard	1.88 (47.8)	2.25 (57.2)
Jumbo ①	2.25 (57.2)	2.25 (57.2)
Extra Large	2.50 (63.5)	2.60 (66)

① If Jumbo plates are to be placed one above the other vertically, add 0.13 (3.3) to minimum dimensions listed.

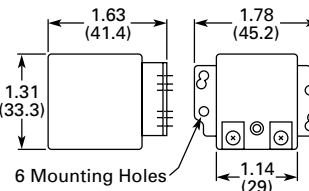
Note: Locating nib hole or notch is 1.36" - 1.4" (34.5 - 35.6 mm) #29 drill.

Enclosure Size (No. of Elements)	Dimensions in Inches (mm)			
	Wide A	High B	Deep C	Mounting D E
2, 3, & 4	3.75 (95.3)	1.94 (49.3)	0.13 (3.3)	2.69 (68.3) 1.38 (35.1)
6 & 7	4.0 (101.6)	2.19 (55.6)	0.13 (3.3)	2.88 (73.2) 1.63 (41.4)

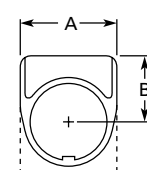


Multiple Button Guard

Number of Elements	Dimension A
2	4.0 (101.6)
3	5.88 (149.4)
4	7.88 (200.2)
7	13.38 (339.9)



Master Test Module, Flasher Module



Legend Plate

Legend Plate	Dim. in Inches (mm)	
	A	B

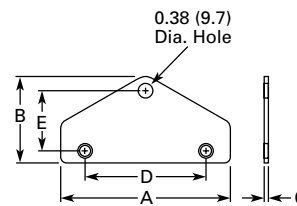
1/2 Round Legend Plates

Small	1.56 (39.6)	0.91 (23.1)
Standard	1.59 (40.4)	1.07 (27.2)
Jumbo	2.06 (52.3)	1.53 (38.9)

Square Legend Plates

Small	1.59 (40.4) Sq.	0.90 (22.9)
Standard	1.75 (44.5) Sq.	1.06 (26.9) ②
Jumbo	2.19 (55.6) Sq.	1.50 (38.1)
Extra Large	2.44 (62.0) Sq.	1.63 (41.4)

② For plastic legend plate, Dimension B is 1.12 (28.4).



Chain Hook Bracket

Figure 47-121. Approximate Dimensions in Inches (mm)