

Dimensions

XTCE Contactors

34

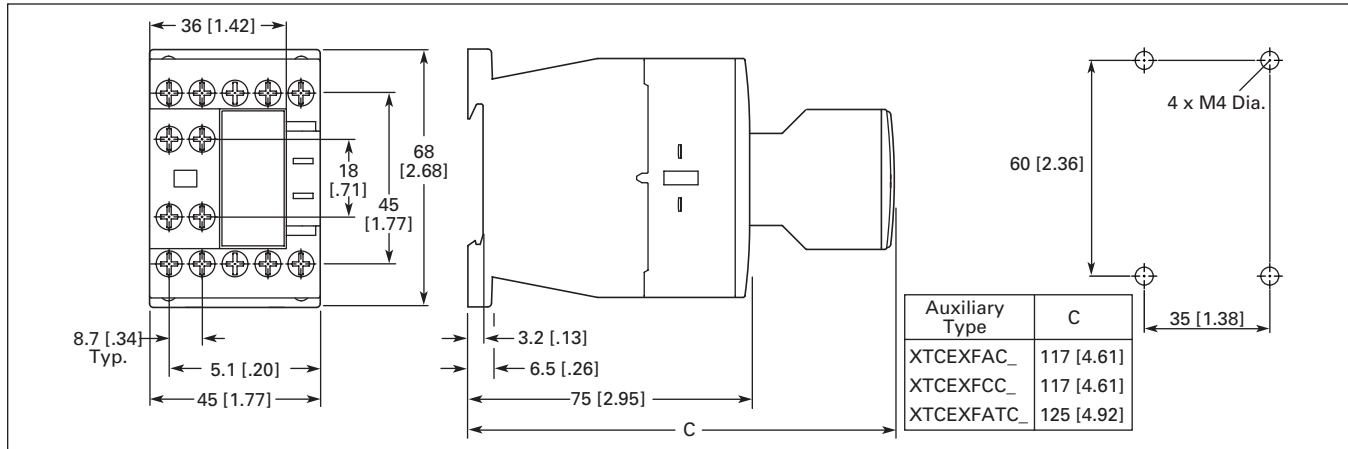


Figure 34-44. Frame B, XTCE007B – XTCE015B Contactors with Screw Terminals (7 – 15A) — Approximate Dimensions in mm [in]

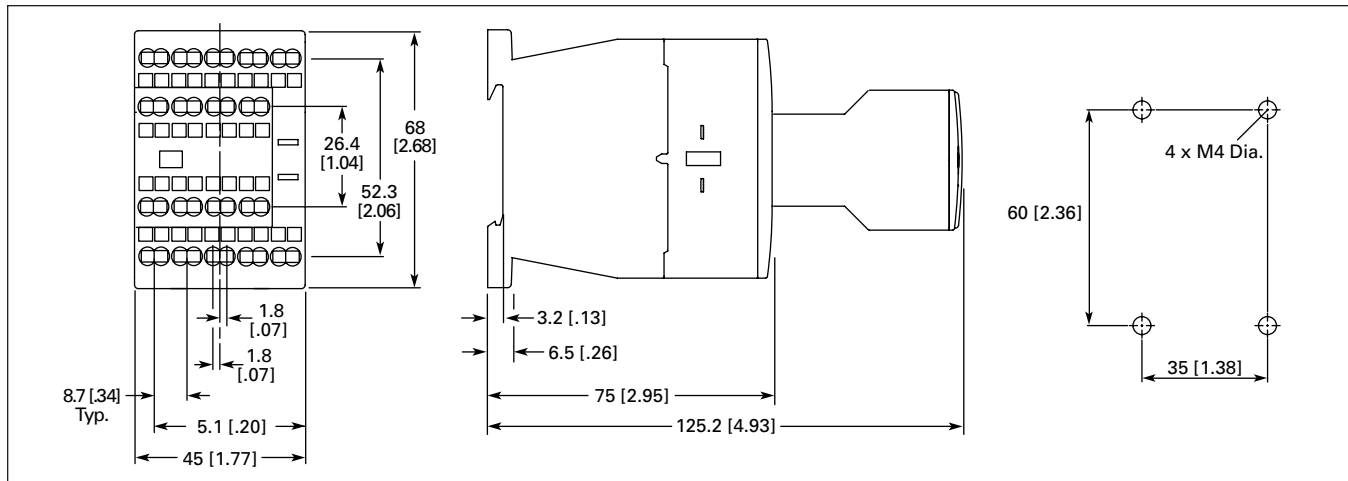


Figure 34-45. Frame B, XTCEC007B – XTCEC012B Contactors with Spring Cage Terminals (7 – 12A) — Approximate Dimensions in mm [in]

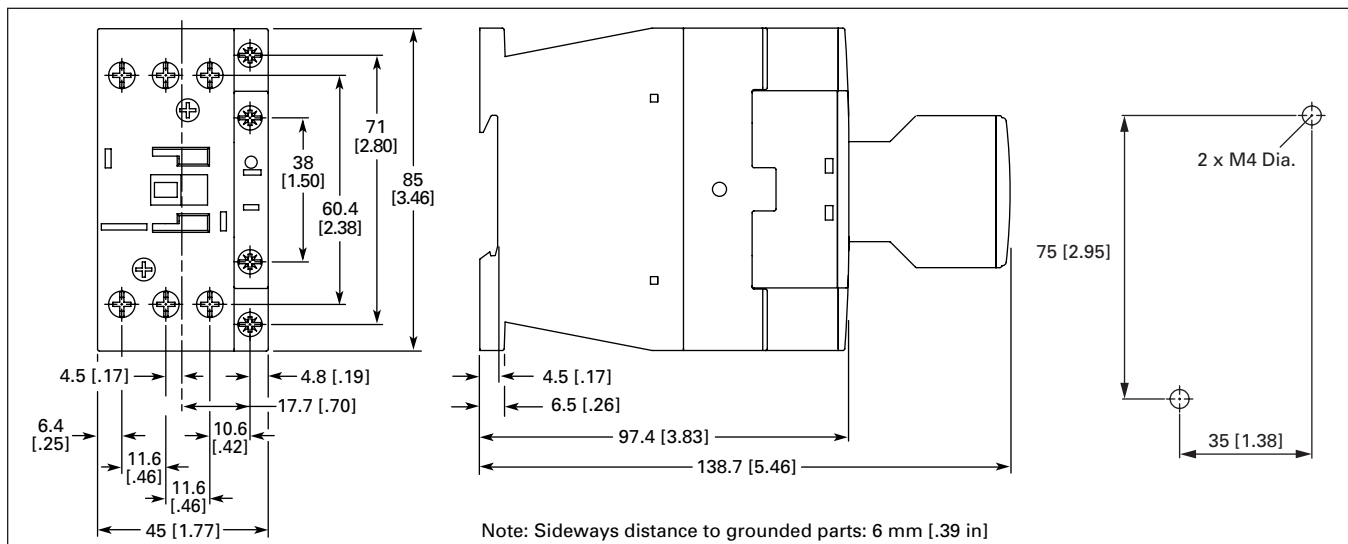


Figure 34-46. Frame C, XTCE018C – XTCE032C Contactors (18 – 32A) — Approximate Dimensions in mm [in]

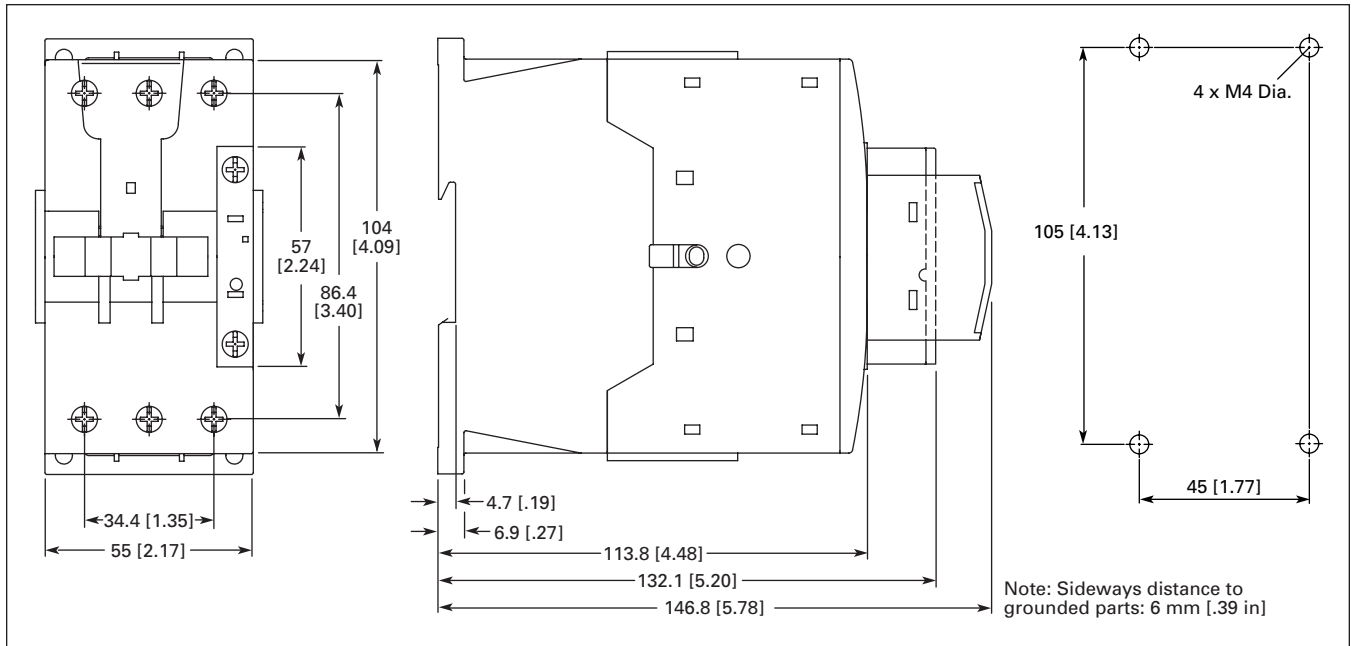


Figure 34-47. Frame D, XTCE040D – XTCE065D Contactors (40 – 65A) — Approximate Dimensions in mm [in]

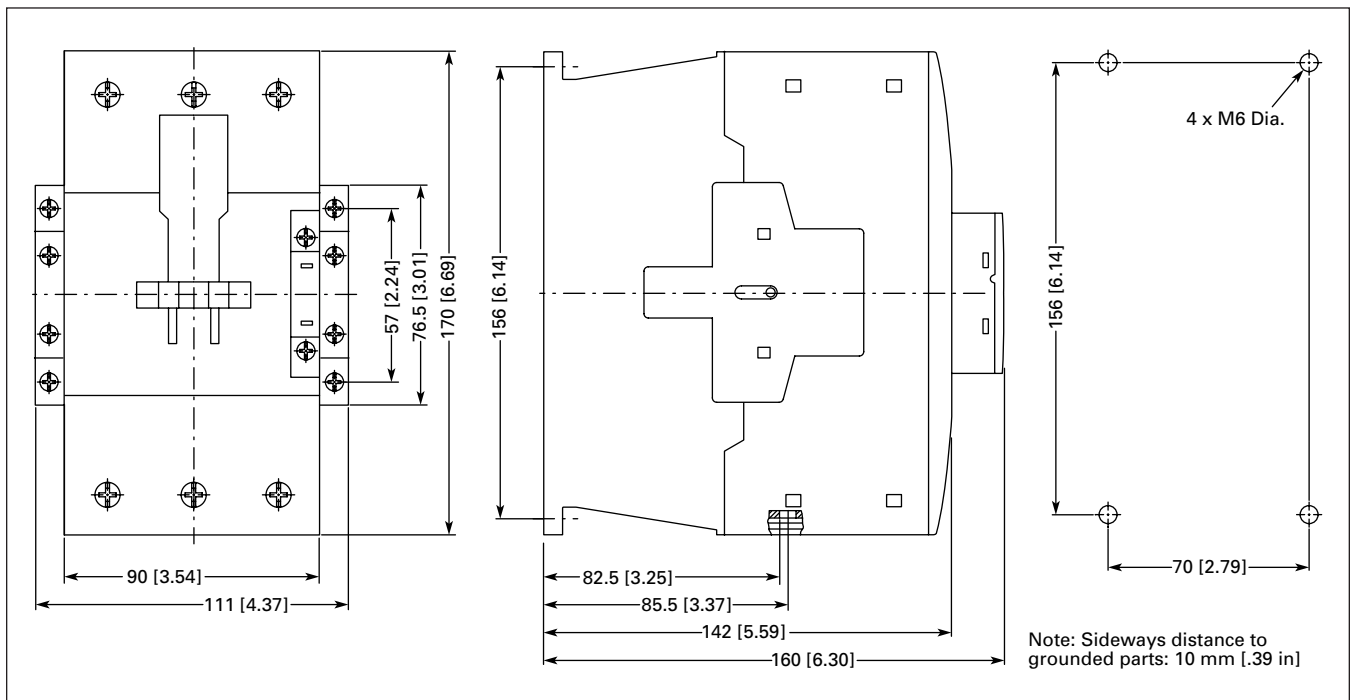
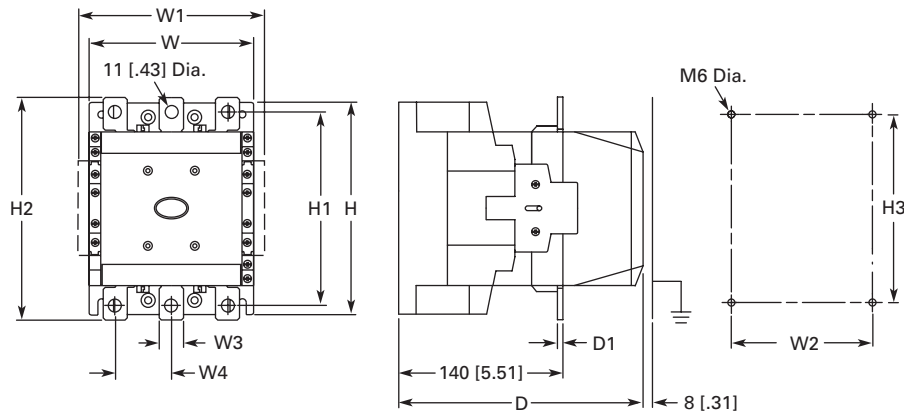
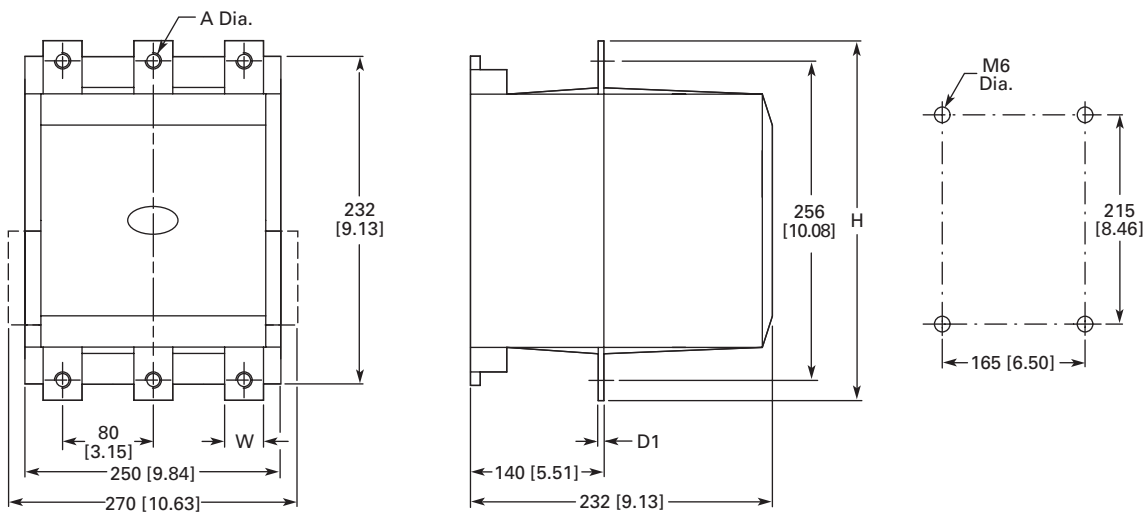


Figure 34-48. Frame F – G, XTCE080F – XTCE150G Contactors (80 – 150A) — Approximate Dimensions in mm [in]



| | W | W1 | W2 | W3 | W4 | H | H1 | H2 | H3 | D | D1 |
|-------------------------|------------|------------|------------|----------|-----------|------------|------------|------------|------------|------------|---------|
| Frame L (185 – 250A) | 140 [5.51] | 160 [6.30] | 120 [4.72] | 20 [.79] | 48 [1.89] | 180 [7.09] | 164 [6.46] | 189 [7.44] | 160 [6.30] | 208 [8.19] | 5 [.20] |
| Frame M (300 – 500A) | 160 [6.30] | 180 [7.09] | 130 [5.12] | 25 [.98] | 48 [1.89] | 200 [7.87] | 184 [7.24] | 209 [8.23] | 180 [7.09] | 216 [8.50] | 6 [.24] |

Figure 34-49. Frame L – M, XTCE185L – XTCE500M Contactors (185 – 500A) — Approximate Dimensions in mm [in]



| | W | H | D1 | A (Dia.) |
|----------|-----------|-------------|----------|------------|
| XTCE580N | 35 [1.38] | 286 [11.26] | 6 [.24] | 11 [.43] |
| XTCE650N | 35 [1.38] | 286 [11.26] | 6 [.24] | 11 [.43] |
| XTCE750N | 45 [1.77] | 296 [11.65] | 6 [.24] | 13.5 [.53] |
| XTCE820N | 45 [1.77] | 296 [11.65] | 6 [.24] | 13.5 [.53] |
| XTCEC10N | 45 [1.77] | 296 [11.65] | 10 [.40] | 13.5 [.53] |

Figure 34-50. Frame N, XTCE580N – XTCEC10N Contactors (580 – 1000A) — Approximate Dimensions in mm [in]

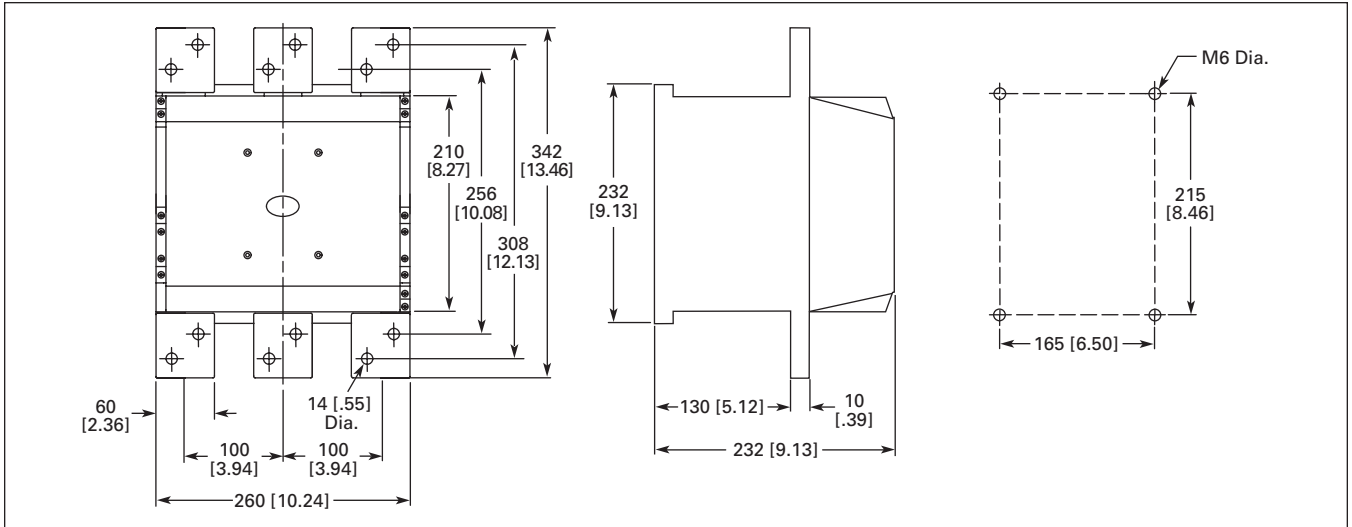


Figure 34-51. Frame P, XTCEC14P Contactor (1400A, AC-1) — Approximate Dimensions in mm [in]

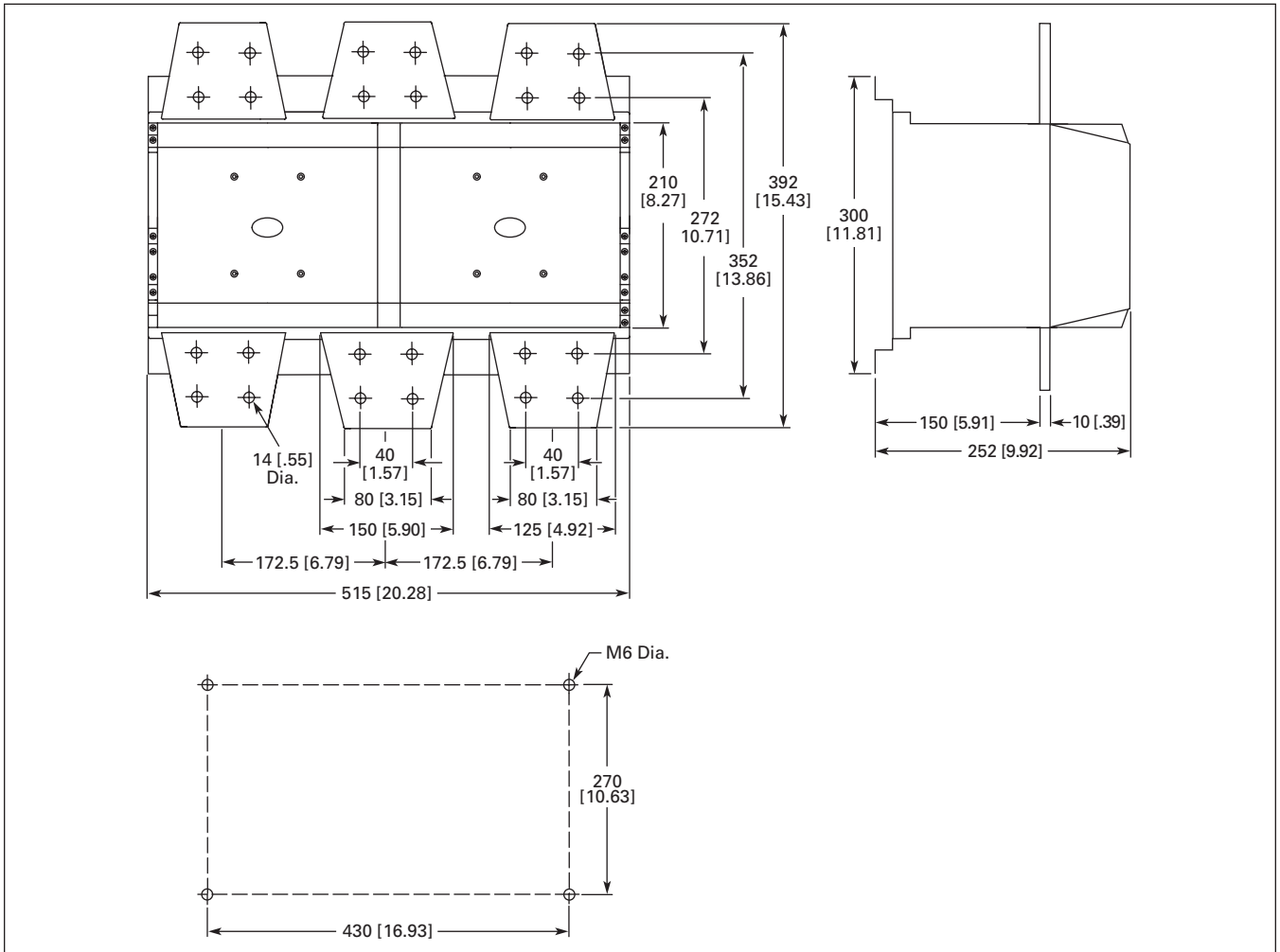


Figure 34-52. Frame R, XTCEC16R, XTCEC20R Contactors — Approximate Dimensions in mm [in]