

FILE IN H65

9441L126

A COMPLETE EQUIPMENT CONSISTS OF:

1 - DRUM SWITCH PER INDEX NUMBER BELOW

MAX. HP RATINGS

	VOLTS	MAX HP
	115	1-1/2
1 PHASE	230	2
3 PHASE	200-575	2
DC	115-230	1

DESCRIPTION			ASSEMBLY PART NO. D83- ●	COVER INSULATOR W/PRINTED DIAGRAM AND INSTRUCTION A56-	MOUNTING PLATE A17- ♣	TOP NAMEPLATE (ON DWG) A30-	INDEX NUMBER 9441 ■
REPLACES	OPERATOR TYPE	FEATURE					
9441H292A	LEVER	MAINTAINED BOTH POSITIONS	1882-19	3122-4	21296	17767	H400C
9441H267B			1882-20		21295	17767-2	H401C

■ SERIES A AND B NEVER BUILT

● ASSEMBLE THE FOLLOWING ITEMS INTO ENVELOPE NO. A75-5183 AND SUPPLY INSIDE CARTON:

- (2) 911-2486Z FLAT HEAD SCREWS, 1/4-20 X 3/8" LONG
- (2) 911-488Z ROUND HEAD SCREWS, 10-32 X 1/4" LONG
- (2) 916-484Z HELICAL WASHERS

PUBLICATIONS - 18976, 22219, 24934 (SUPPLY LOOSE)

♣ SUPPLY LOOSE

DIAGRAM - 225527D1 (DO NOT SUPPLY WITH CONTACTOR)

DIMENSION DRAWING - A83-1385, FIG. 1

PACKAGE REFERENCE

PACKAGE A75-3026-4
LABEL A30-10346

TITLE RETROFIT DRUM SWITCH KIT - ORIGINALLY SET UP FOR BRIDGEPORT MACHINES			SUP'S		LISTING UL LISTED AND CSA CERTIFIED
DRAWN BY <i>A.T. Schneider</i>			APPROVED BY <i>F.R. Boness</i>		
DATE 1-20-97			DEVELOPMENT NUMBER DV14-1488-10		
A	C	E	EFFECTIVE DATE MKE120465458		
B	D	F	DATA SHEET 9441L		NUMBER 126

9441H400 AND 9441H401 DRUM SWITCH KIT INSTALLATION INSTRUCTIONS

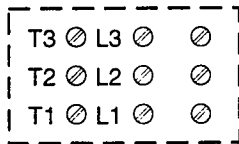
Kit 9441H400 replaces catalog number 9441H292A drum switches.
Kit 9441H401 replaces catalog number 9441H267B drum switches.

This kit contains:

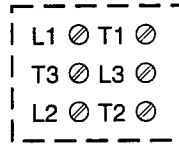
- 1 - drum switch
- 1 - mounting adaptor plate
- 2 - 1/4-20 x 3/8 inch long flat head screws
- 2 - 10-32 x 1/4 inch long round head screws
- 2 - #10 helical washers

CAUTION!

Power and motor connections to the new 9441H400 and 9441H401 switches are different from the 9441H292A or 9441H267B switches being replaced. To prevent damage to equipment or risk of electrical shock, carefully read and follow the wiring diagram and instructions provided on the inside cover of the drum switch.



OLD SWITCH



NEW SWITCH

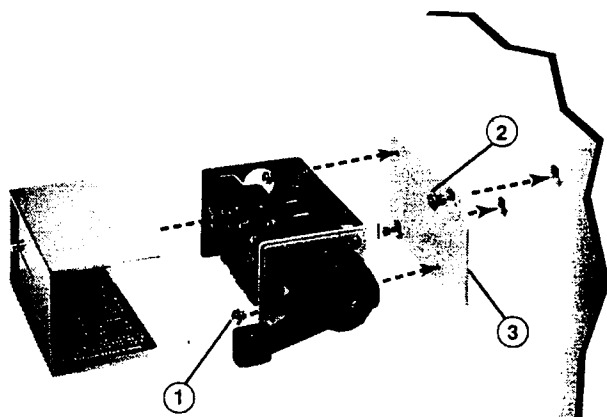
INSTALLATION

DISCONNECT POWER BEFORE SERVICING!

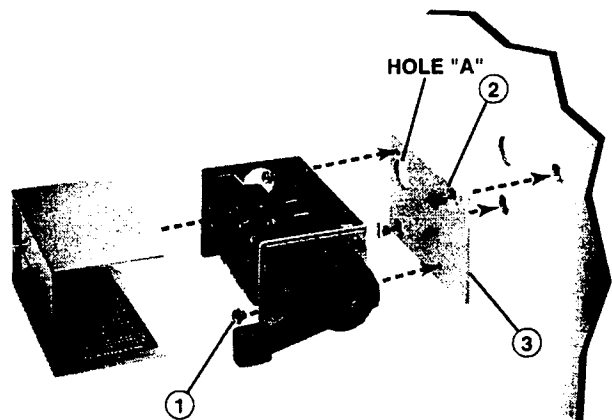
Disconnect line and load connections and remove the old switch.

1. Mount the adaptor plate, Item 3, to existing switch mounting holes using the two 1/4-20 x 3/8 inch flat head screws, Item 2, provided.
2. Mount the switch to the adaptor plate using the two 10-32 x 1/4 inch round head screws and #10 washers, Item 1, provided.

NOTE: For 9441H401 switch installations, motor leads must be pulled through hole "A".



9441H400



9441H401

Use 60/75°C copper conductors only.

GROUNDING CONDUCTOR TERMINATION

For installation which require the termination of a grounding conductor, the following ground termination kit is available.

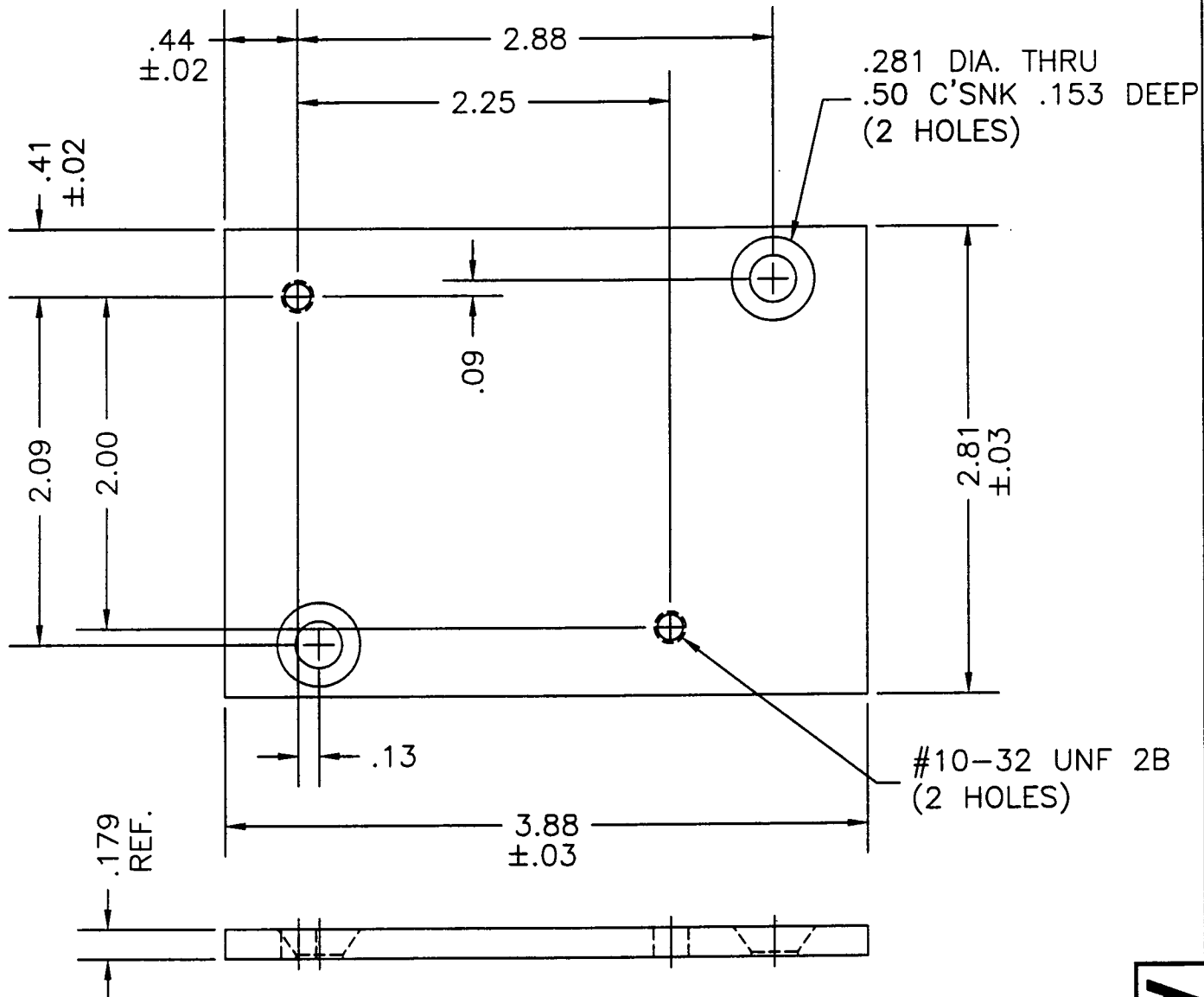
Each kit contains the necessary connectors for installing a ground conductor directly to the equipment enclosure.

Ground Kit No. C401GG11

Cutler-Hammer

Printed in U.S.A.

THE INFORMATION ON THIS DRAWING IS THE PROPERTY OF EATON CORPORATION, IS DISCLOSED IN CONFIDENCE AND IS NOT TO BE REPRODUCED, USED OR DISCLOSED EXCEPT FOR THE PURPOSE FOR WHICH FURNISHED.



9441 H400

ORDER NO. <i>mke02.0575006</i> DV14-1088-10		BASIC SPEC. SUMMARY CH103-1 50-23456		RAW MAT. DESCR. .179 STL.	
TITLE MTG. PLATE		THIRD ANGLE PROJECTION 		PART NO. _____ SPEC. CH103-1	
				TOLERANCING UNLESS OTHERWISE SPECIFIED LINEAR: .XXX ±.005 .XX ±.01 ANGULAR: X' ±1'	
				SURFACE COATING PAINT PER 50-23456 SCALE 1 = 1	
A				DO NOT SCALE DRAWING. WORK ACCORDING TO DIMENSIONS. REQUIREMENTS OF 50-2500 SHALL APPLY TO THIS DRAWING UNLESS OTHERWISE SPECIFIED. DIMENSIONS BEFORE COATING ARE SPECIFIED—ALLOWANCES HAVE BEEN MADE FOR COATINGS EXCEPT ON THREADS.	
B				DR. B. BADEAU 1/27/97 FIRST ASSEM. WHERE LISTED	
C				CHK. <i>S. F. Schneider</i> 2/4/97 SUP'S NON-INTERCHANGEABLE	
D				APP. <i>S. F. Schneider</i> 2/4/97 SUP'D BY NON-INTERCHANGEABLE	
E				Cutler-Hammer EATON	

A

17-21296

COMPUTER GENERATED TRACING - .DWG