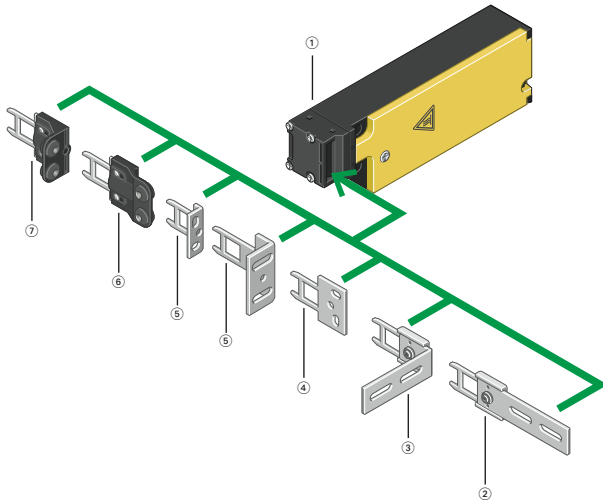


Product Identification

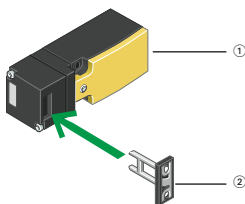
Solenoid Safety Interlock Switches (LS-...ZBZ)



Notes

- ① **Basic device** (see Page 27)
Spring or magnet-powered interlock
For increased personnel and process protection
Tamper-proof
Multiple coded actuators
Contacts: 1NO/1NC or 2NC
- ② **Flat flexible actuator** (see Page 28)
For doors that do not close precisely
- ③ **Angled flexible actuator** (see Page 28)
For doors that do not close precisely
- ④ **Flat actuator** (see Page 28)
For sliding doors
- ⑤ **Angled actuator** (see Page 28)
For swing doors
- ⑥ **Flat compensating actuator** (see Page 28)
For increased tolerance compensation in the direction of door closure
- ⑦ **Angled compensating actuator** (see Page 28)
For increased tolerance compensation in the direction of door closure

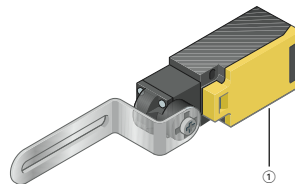
Miniature DIN Safety Interlock Switch (LS-...ZB)



Notes

- ① **Complete device** (see Page 26)
For personnel protection
Contacts: 1NC, 1NO/1NO or 2NC
Five directions of operation possible
- ② **Actuator** (see Page 28)
Multiple coding protection against tampering

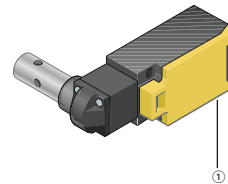
Door Flap Safety Switch (LSR-...TKG)



Note

- ① **Complete device** (see Page 26)
For personnel protection
Contacts: 1NO/1NC or 2NC
For swing doors with fixed connection to the door/hinge pin

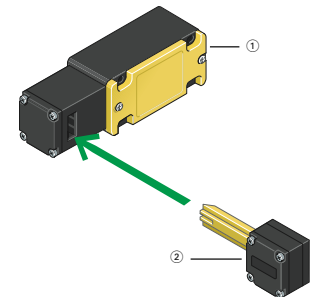
Door Hinge Safety Switch (LSR-...TS)



Note

- ① **Complete device** (see Page 26)
For personnel protection
Contacts: 1NO/1NC or 2NC
For swing doors with fixed connection to the door/hinge pin

Full-Size DIN Safety Interlock Switch (LS4-...ZB)



Notes

- ① **Complete device** (see Page 26)
Narrow enclosure version
For personnel protection
Contacts: 1NO, 1NO/1NC
- ② **Actuator** (see Page 28)
Multiple coding
For horizontal or vertical operation