

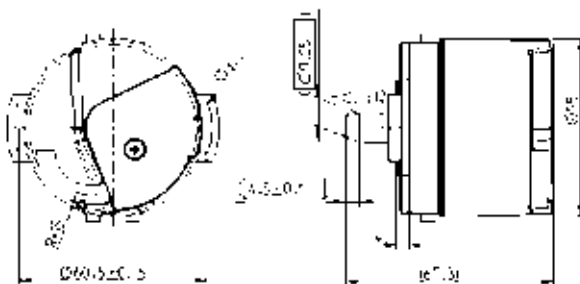
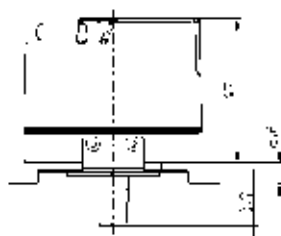
Ordering Information

To order, complete the model number with code numbers from the table below:

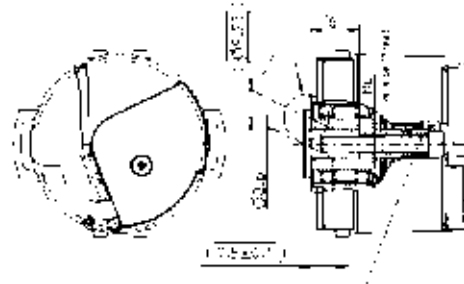
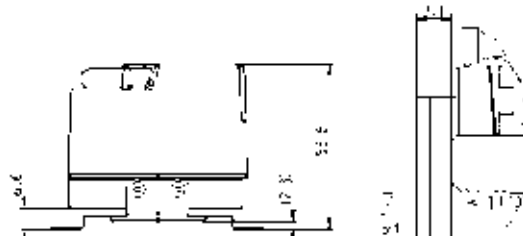
Code 1: Model	Code 2: Bits	Code 3 :Mounting	Code 4: Shaft Size	Code 5: Protocol	Code 6: Electrical	Code 7: Connector
AD25	<input type="checkbox"/> <input type="checkbox"/> <input type="checkbox"/> <input type="checkbox"/>	<input type="checkbox"/>	<input type="checkbox"/>	<input type="checkbox"/>	<input type="checkbox"/>	<input type="checkbox"/>
AD25 Size25 Acuro Absolute Encoder	Single-Turn 0013 13 Bit 0022 22 Bit	4 Spring Tether	Y 10mm Shaft (10:1 Taper) Z 10mm Hub Shaft (10:1 Taper)	Available when Code 2 is 0022 or 1222 A BiSS	0 5 VDC	M Drive cable, 1 foot (30 cm)
	Multi-Turn 1213 12 Bit Multi- Turn, 13 Bit Single-Turn 1222 12 Bit Multi- Turn, 22 Bit Single-Turn					

Dimensions (mm)

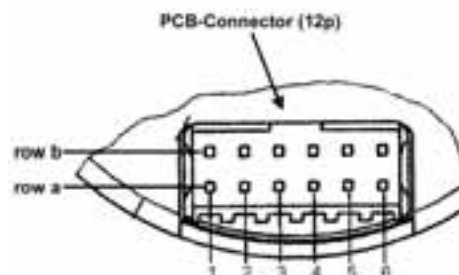
Code 4: Shaft Size



Y
10mm (10:1 taper) Shaft



Z
10mm Hub Shaft



12 pin PCB connector
manufacture Berg, type Minitek