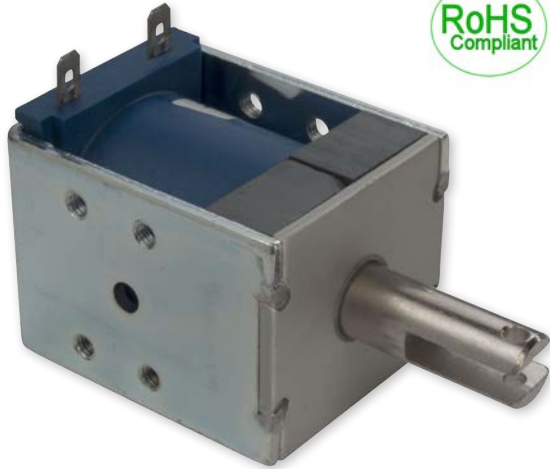


D4-ML



MAGNETIC LATCHING SOLENOID

D-frame, pull type solenoid with an internal permanent magnet for keeping the plunger in the retracted position without power.

Features

- Innovative design provides more pull and hold force than other solenoids of similar size.
- Low power consumption



Electrical Specifications	
Coil Voltages	6, 12, 24 VDC - Other options available on request
Coil Power	29 Watts Intermittent, 115 Watts Pulse - Other options available on request
Coil Termination	.187" quick connect terminals (standard) .250" quick connect terminals (optional)
Duty Cycle	Intermittent and pulse duty available (see standard part numbers on page 3)
Coil Treatment	Encapsulated (tape wrapped optional)
Insulation Class	Class B (130°)
Dielectric Strength	30 Volts and Under: 500 VRMS Over 30 Volts: 1000 VRMS plus 2X rated voltage for 1 minute
Mechanical Specifications	
Size	1.996" (L) x 1.437" (W) x 1.626" (H) See page 2 for dimensional drawing
Forces	See force curves on page 2
Plunger Diameter	0.4375"
Plunger Guide Material	Plastic
Mounting	8x 8-32 UNC - 2B TAP Mounting Holes
Weight	Plunger -1.63 oz., Total - 12 oz.
Life Expectancy	250,000 Cycles (Dependent on load conditions)
Agency Approvals	
UL File No. E74443 For Insulation Systems S105, S130, S130D, S130D1, S155D	

All dimensions in Inches