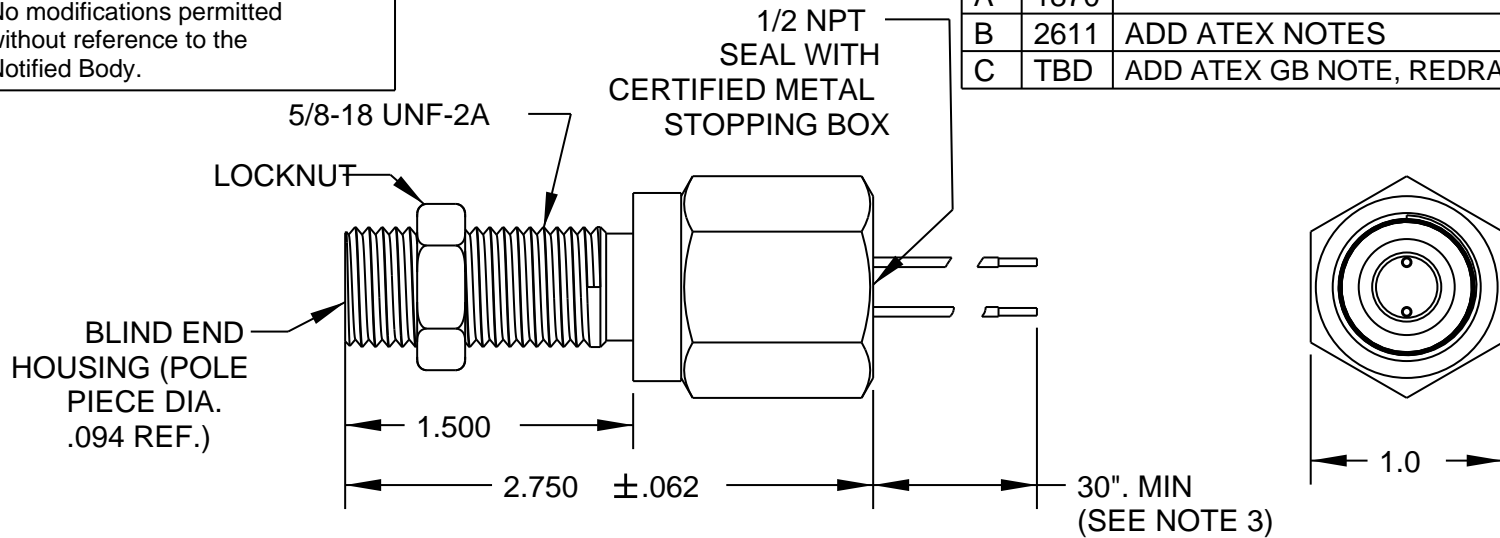


SCHEDULE DRAWING

No modifications permitted
without reference to the
Notified Body.

REV	ECN	DESCRIPTION	DATE	DR	CK
A	1870		1/06/95	KP	LOC
B	2611	ADD ATEX NOTES	01/18/11	PF	DW
C	TBD	ADD ATEX GB NOTE, REDRAW IN CAD	08/28/13	PF	AM



LISTED WITH
UNDERWRITERS
LABORATORIES, INC.
CLASS I, GP.A,B,C
& D. CLASS II, GP
E, F & G.

CS CERTIFIED
CLASS I
GROUPS A,B,C,D

ATEX CERTIFIED

CE 0081
Ex II 2 G
Ex d IIC T6 Gb
LCIE 04 ATEX 6019X

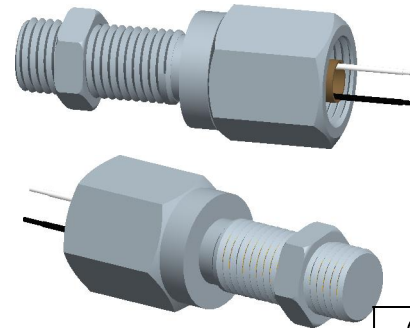
TEMPERATURE RANGE	OUTPUT VOLTAGE (SEE NOTE 1)	DC RESISTANCE AT 75 °F	INDUCTANCE AT 1 KHZ	OUTPUT LEADS (SEE NOTE 2)	INSULATION RESISTANCE AT 500 VDC
-100 °F to +200 °F	23-33V P-P	170-210 OHMS	29 MH. NOM.	AWG 18 UL 1015	100 MEGOHMS MIN. COIL TO HOUSING

NOTES:

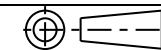
- 1- TESTED AT 1000 INCHES/SECOND WITH AN 20 PITCH, 30 TOOTH GEAR, 0.005" CLEARANCE AND 100 KOHMS.
- 2- WITH APPROACH OF FERROUS METAL, WHITE LEAD IS POSITIVE WITH RESPECT TO BLACK LEAD.
- 3- LEAD LENGTH UP TO 100 FT. OPTIONAL

CONSTRUCTION:

HOUSING ----- 303 STAINLESS STEEL
POTTING ----- EPOXY RESIN



INSTRUMENT OR INSTALLATION MUST
LIMIT GENERATED VOLTAGE TO 95V
RMS (270 VOLTS PEAK TO PEAK) AND
MAX. CURRENT TO 0.05 AMPS.



THIRD ANGLE
PROJECTION

Sheet1 of 1

DYNALCO

MODEL	M180	DRAWN	PF	SCALE	
PATH	MPROD\PICKUPS\M180	APPROVED	HM	NONE	
TITLE	OUTLINE AND SPECIFICATIONS M180 U.L. LISTED MAGNETIC PICKUP				
DATE	12/03/80	A 800-0180			REV C

TOLERANCES
FRACT. DEC. ANGLES
±1/64 .XXX±.005 ±1/2°
.XX±.01

MATERIAL

FINISH

THIS DOCUMENT, ALL INFORMATION CONTAINED IN AND ALL INFORMATION RELATED TO IS PROPERTY OF DYNALCO CONTROLS. IS CONFIDENTIAL TO IT AND NO PART THEREOF NOR ANY SUBSTANTIAL INFORMATION MAY BE COPIED, DISSEMINATED OR USED IN ANY MANNER WHATSOEVER WITHOUT THE WRITTEN CONSENT OF DYNALCO AND IS TO BE RETURNED TO DYNALCO UPON REQUEST.