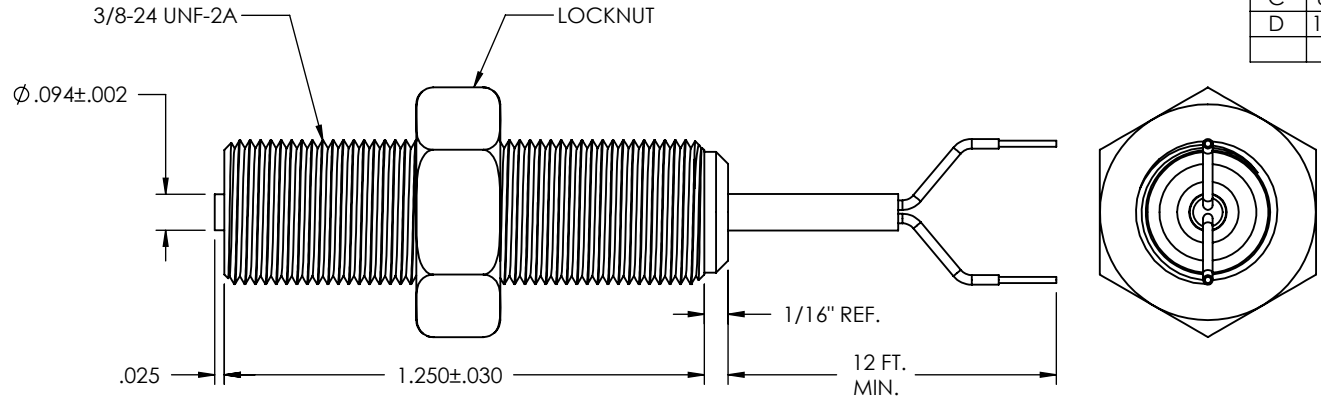


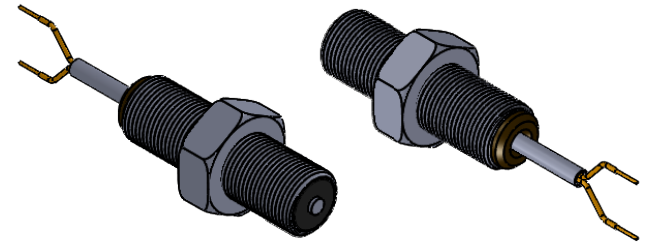
| REV | ECN | REVISION RECORD | DATE | DR | CK |
|-----|-------|---------------------------------|----------|----|-----|
| A | 1064 | CHNG LEAD WIRES TO SHLD CABLE | 11-02-88 | | LOC |
| B | | TEFLON CABLE WAS PVC CABLE | 03-21-97 | | LOC |
| C | 8794 | REDRAW IN CAD | 10-25-13 | PF | MG |
| D | 10140 | WIRE LENGTH UNIT CHANGED TO FT. | 06-09-16 | PV | JR |



| TEMPERATURE RANGE | OUTPUT VOLTAGE PEAK TO PEAK | DC RESISTANCE OHMS | INDUCTANCE MILLIHENRYS | OUTPUT CONNECTION | INSULATION RESISTANCE | NET WEIGHT |
|-------------------|-----------------------------|--------------------|------------------------|--------------------------------|--|--------------|
| -65°F TO +225°F | 60-90 VOLTS (SEE NOTE 1) | 390-530 AT 75°F | 112 NOM. | SHIELDED CABLE TEFLON AWG # 26 | 100 MEGOHMS MIN. AT 500 VDC, COIL TO HOUSING | 3.2 OZ. AVG. |

NOTES:

- TESTED AT 1000 INCHES/SECOND WITH A 20 PITCH, 30 TOOTH GEAR, 0.005" CLEARANCE AND 100,000 OHM LOAD SHUNTED BY 250 MMF.
- WITH APPROACH OF FERROUS METAL, WHITE LEAD IS POSITIVE WITH RESPECT TO BLACK LEAD.



CONSTRUCTION:

HOUSING - 303 STAINLESS STEEL
 POLE PIECE - 416 STAINLESS STEEL
 POTTING - EPOXY RESIN

DO NOT SCALE THIS DRAWING

THIS DOCUMENT, ALL INFORMATION CONTAINED IN AND ALL INFORMATION RELATED TO, IS PROPERTY OF DYNALCO. IS CONFIDENTIAL TO IT AND NO PART THEREOF NOR ANY SUCH INFORMATION MAY BE COPIED, DISSEMINATED OR USED IN ANY MANNER WHATSOEVER WITHOUT THE PRIOR WRITTEN CONSENT OF DYNALCO AND IS TO BE RETURNED TO DYNALCO UPON REQUEST.

| | | | |
|--|--|------------------------|--------------|
| UNLESS OTHERWISE SPECIFIED | | THIRD ANGLE PROJECTION | |
| DIMENSIONS ARE IN INCHES DIMENSIONAL TOLERANCES: FRACTIONAL ± 1/64 ANGULAR: ± 1/2° XX ± 0.010 XXX ± 0.005 | | DYNALCO | |
| DATE: 9-14-88 | MODEL: M334 | DRAWN H.WIRE | |
| MATERIAL: P/L M334 | PATH: N:\PROD\PICKUPS\M334 APPROVED L.CILA | | |
| FINISH: | TITLE: MAGNETIC PICKUP, MODEL M334 | SIZE A | REV D |
| DO NOT SCALE DRAWING | SCALE | WEIGHT | SHEET 1 OF 1 |