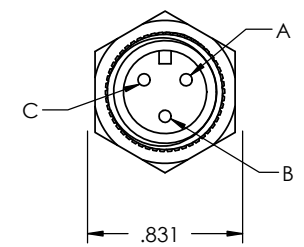
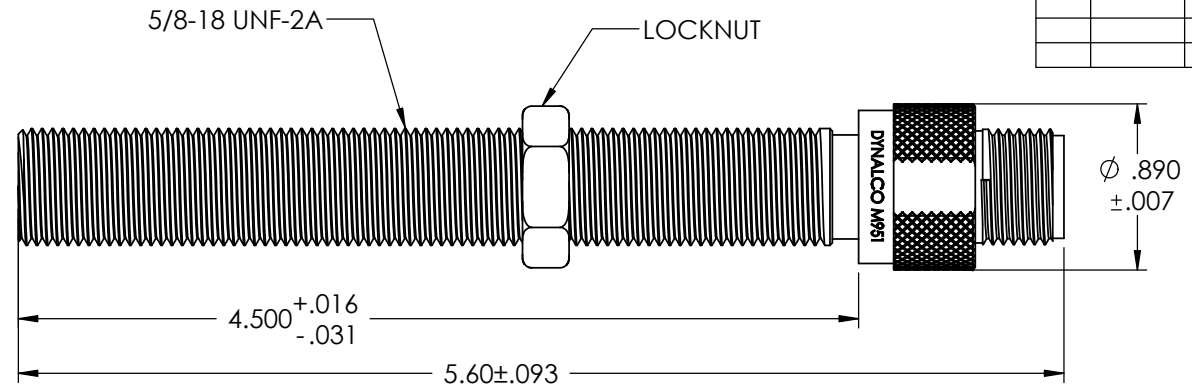


REV	ECN	REVISION RECORD	DATE	DR	CK
A	9XXX	INITIAL RELEASE	04/25/14	PF	BR



**SPECIFICATIONS:**

- POWER SUPPLY: 8 TO 32VDC.
- SUPPLY CURRENT: 30 mA MAXIMUM
- OPERATING TEMPERATURE: -30 F TO +250 F (-35 C to 125 C)
- SENSED FREQUENCY: 0 TO 20 KHZ
- OUTPUT VOLTAGE: SQUARE WAVE.
- LOGIC 0: WHEN NEAR FERROUS MATERIAL, ACTIVATES SENSOR.
  - \* +0.5V AT ≤ 50mA.
- LOGIC 1: WHEN NO FERROUS MATERIAL PRESENT
  - \* FOR  $V_{in} \leq 24V$  USE A PULL UP RESISTOR  $\geq 1K\Omega$
  - \* FOR  $V_{in} \leq 16V$  USE A PULL UP RESISTOR  $\geq 330\Omega$
- INSULATION RESISTANCE: 100 MEGAohm MIN. AT 50 VDC (COMMON TO HOUSING)
- HOUSING: 303 STAINLESS STEEL, BLIND END.

ELECTRICAL CONNECTIONS	
PIN A	COMMON
PIN B	POWER SUPPLY
PIN C	OUTPUT

UNLESS OTHERWISE SPECIFIED		THIRD ANGLE PROJECTION	
DIMENSIONS ARE IN INCHES DIMENSIONAL TOLERANCES: FRACTIONAL $\pm 1/64$ ANGULAR: $\pm 1/2^\circ$ XX $\pm 0.010$ XXX $\pm 0.005$		<b>DYNALCO</b>	
DATE: 04/04/14	MODEL: M951	DRAWN: PF	APPROVED: HM
MATERIAL:	TITLE: PICKUP, HALL EFFECT, MODEL M951		
FINISH:	SIZE: <b>A</b>	DWG. NO. 800-0951	REV: <b>A</b>
DO NOT SCALE DRAWING	SCALE 1:1	WEIGHT	SHEET 1 OF 1

THIS DOCUMENT, ALL INFORMATION CONTAINED IN AND ALL INFORMATION RELATED TO, IS PROPERTY OF DYNALCO, IS CONFIDENTIAL TO IT AND NO PART THEREOF NOR ANY SUCH INFORMATION MAY BE COPIED, DISSEMINATED OR USED IN ANY MANNER WHATSOEVER WITHOUT THE PRIOR WRITTEN CONSENT OF DYNALCO AND IS TO BE RETURNED TO DYNALCO UPON REQUEST.