

# Installation Instructions for Indoor AdaptaHorns

## Description

The AdaptaHorns are UL listed vibrating horns. They are low current, high decibel horns designed for heavy-duty use indoors. The horns are intended for general signaling applications.

### PLC Compatibility

The electrical input load requirements for PLC compatible signaling devices are listed in Table 1. Signaling devices may be directly connected to output cards that meet these input load requirements.

24V DC electromechanical horns such as the 871-G1, 873-G1, 873DPO-G1 and 875-G1 can produce transient spikes and should only be used on PLC output cards that have inherent transient spike suppression. The Process Control Engineer should consult the PLC manufacturer when connecting 24V DC electromechanical devices to PLCs.

## Installation

### Flush Mounting (870 and 871 Series)

1. Using approved wiring methods, connect black wire leads to power source wires. Polarity is not important.

2. Ground to wiring system.
3. Insert horn connector into connector receptacle and secure horn to backbox with (4) oval head screws (supplied).

### Surface Mounting (872, 872DPO, 873, 873DPO, 874, and 875 Series)

1. Loosen screw at bottom of horn and remove backplate.
2. Mount plate using one of the following methods:
  - a. Mount on any outlet box cover having single gang opening using #6 screws (supplied).
  - b. Mount on a 3 1/4" (83mm), 3 1/2" (89mm), 4" (102mm) octagon or 4" (102mm) square box using #8 screws supplied with backbox.
  - c. Mount on the wall, for open wiring, using #8 wood screws (supplied).
3. Using approved wiring methods connect one wire to each terminal in backplate. Ground to wiring system.
4. Place the horn on the mounting plate so that the tab at the top seats in slot on horn. Press horn firmly against plate and tighten screw at bottom of unit. See Figure 1.

Table 1. PLC Compatibility

Cat. No.	Operating voltage*	Maximum off state leakage current (mA)	Continuous on current (mA)	Surge (inrush/duration) (A/ms**)
870-N5	120V AC	25	120	1.02/0.000026
871-G1	24V DC	25	150	1.7/0.000042
872-N5	120V AC	25	120	1.02/0.000026
872DPO-N5	120V AC	25	120	1.02/0.000026
873-G1	24V DC	25	150	1.7/0.000042
873DPO-G1	24V DC	25	150	1.7/0.000042
874-N5	120V AC	25	120	1.02/0.000026
875-G1	24V DC	25	150	1.7/0.000042

\*All AC volts at 60 Hz

\*\*Amps/milliseconds

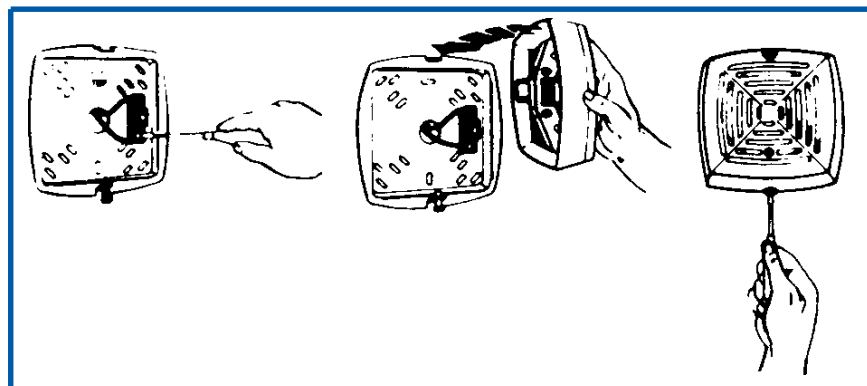


Figure 1. Mounting the Horn on the AdaptaPlate

### ***Volume Adjustment***

These devices have a volume adjustment screw (located on the grille front) factory set to maximum. To reduce volume level, turn set screw clockwise using the supplied 1/16" (1.6mm) allen wrench.

Table 2. Electrical Specifications

<b>Cat. No.</b>	<b>Voltage</b>	<b>Current</b>
870-G5	24V 50/60 Hz	0.63A
870-N5	120V 50/60 Hz	0.13A
870-R5	240V 50/60 Hz	0.07A
871-E1	12V DC	0.27A
871-G1	24V DC	0.16A
871-K1	48V DC	0.07A
871-P1	125V DC	0.025A
871-S1	250V DC	0.014A
872-E5	12V 50/60 Hz	1.25A
872-G5	24V 50/60 Hz	0.63A
872-N5	120V 50/60 Hz	0.13A
872-R5	240V 50/60 Hz	0.07A
872DPO-G5	24V 50/60 Hz	0.63A
872DPO-N5	120V 50/60 Hz	0.13A
872DPO-R5	240V 50/60 Hz	0.07A
873-G1	24V DC	0.16A
873-K1	48V DC	0.07A
873-P1	125V DC	0.025A
873-S1	250V DC	0.014A
873DPO-E1	12V DC	0.27A
873DPO-G1	24V DC	0.16A
873DPO-J1	32V DC	0.13A
873DPO-P1	125V DC	0.025A
873DPO-S1	250V DC	0.014A
874-E5	12V 50/60 Hz	1.25A
874-G5	24V 50/60 Hz	0.63A
874-N5	120V 50/60 Hz	0.13A
874-R5	240V 50/60 Hz	0.07A
875-C1	6V DC	0.70A
875-E1	12V DC	0.27A
875-G1	24V DC	0.16A
875-J1	32V DC	0.13A
875-P1	125V DC	0.025A
875-S1	250V DC	0.014A