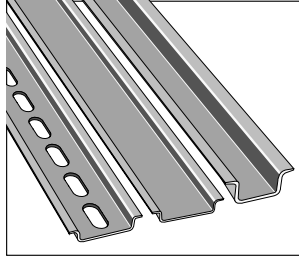


Mounting rails Symmetrical - DIN 3



These rails are often used as grounding bars. The current carrying capacity of these rails and the copper wire sizes required to carry that current are given below.

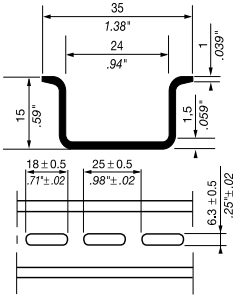
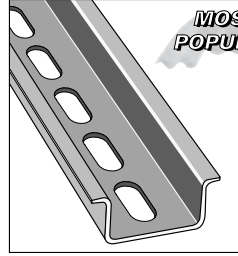
RAIL CURRENT CARRYING CAPACITY

Rail	Material	Current (A)	Wire size	AWG	mm ²
TS35/CF 6	Steel	125	4	25	
TS35/C 1	Steel	143	2	35	
TS35/C	Steel	125	4	25	
TS35/CAL U	Aluminum	265	000	95	
Highrail 90°	Steel	65	8	10	
Highrail 30°	Steel	65	8	10	

All rails are in compliance with EN 50022 standard (DIN 46277-3 - NFC 63015) DIN 3.

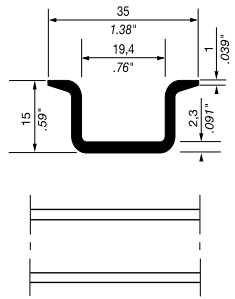
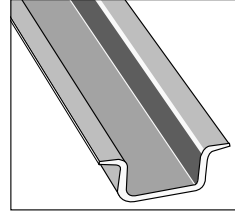
Tolerances are ± unless otherwise noted.

TS35/CF6 MOST POPULAR



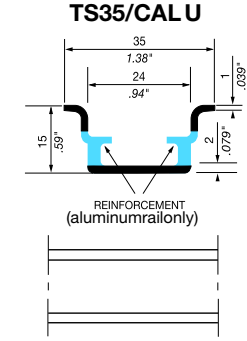
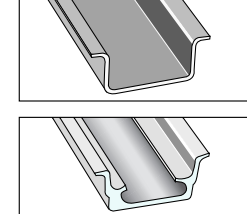
Type	P/N
PR5(TS35/CF6)	1SNA178529R0400
White passivated galvanized steel, prepunched length 2 m 6'6" (78") approx. The length and prepunched cutout dimensions are approximate.	
PR5(TS35/CF6)	1SNA150043R0000
Length 1 m 3'3" (39") approx.	

TS35/C1



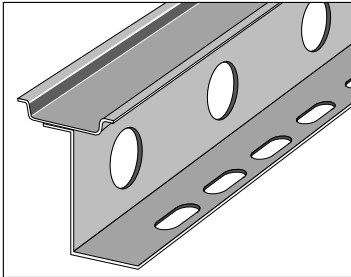
Type	P/N
PR4(TS35/C1)	1SNA168500R1200
White passivated galvanized steel, Length 2 m 6'6" (78") approx.	
PR4(TS35/C1)	1SNA150044R0000
Length 1 m 3'3" (39") approx.	

TS35/C

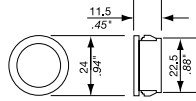


Type	P/N
PR5(TS35/C)	
White passivated galvanized steel, Length 2 m 6'6" (78") approx. . 1SNA168700R2200	
Length 1 m 3'3" (39") approx. . 1SNA150042R0000	
PR5.A2(TS35/CALU)	
Reinforced aluminum, Length 2 m 6'6" (78") approx. . 1SNS320001Z3106	
Length 1 m 3'3" (39") approx. . NLA	

TS 35, HighRail 90°

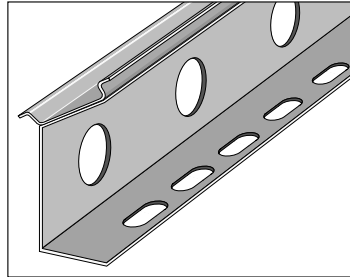


Sold in North America only.

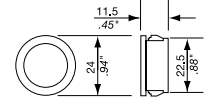


Insert for rail knockout:	
Open grommet, black	NLA
Closed blind plug, black	NLA

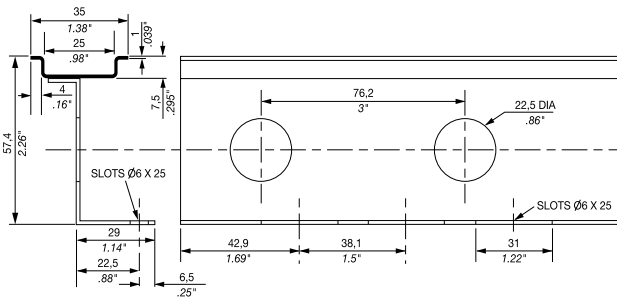
TS 35, HighRail 30°



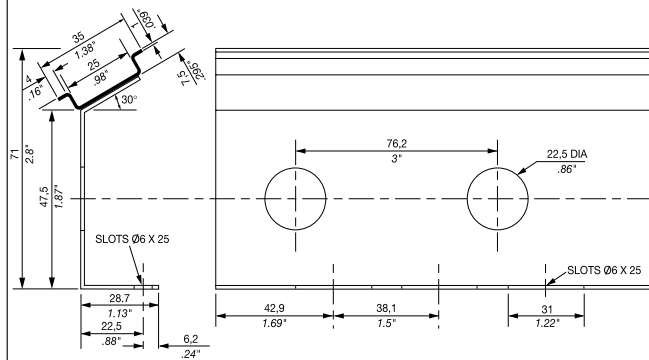
Sold in North America only.



Insert for rail knockout:	
Open grommet, black	NLA
Closed blind plug, black	NLA



Type	P/N	Type	P/N
PR3.Z2HR9 0 ALU	1SNA150056R0000	PR3.Z2HR9 0 ALU	NLA
Aluminum, prepunched length 2 m 6'6" (78") approx. The length and prepunched cutout dimensions are approximate.		Aluminum, Length 1 m 3'3" (39") approx.	



Type	P/N	Type	P/N
PR3.Z2HR3 0 ALU	1SNA150058R0000	PR3.Z2HR3 0 ALU	1SNA150057R0000
Aluminum, prepunched length 2 m 6'6" (78") approx. The length and prepunched cutout dimensions are approximate.		Aluminum, Length 1 m 3'3" (39") approx.	