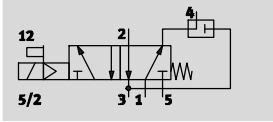


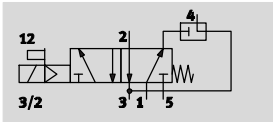
# Solenoid valves VSNC

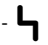


Technical data – 3/2-way or 5/2-way valve, convertible, single solenoid

Function<sup>1)</sup>  
5/2-way valve



3/2-way valve  
with exhaust return



-  - Voltage  
24 V DC
-  - Operating pressure  
2.5 ... 10 bar
-  - Temperature range  
-20 ... +60 °C



<sup>1)</sup> Can be changed by exchanging the seal plate

General technical data		VSNC-FC-M52-MD-G14-F8 VSNC-FC-M52-MD-N14-F8	VSNC-FC-M52-MD-G14-F8-1B2
Valve function		3/2-way or 5/2-way, convertible	
Width	[mm]	32	
Design		Piston spool	
Sealing principle		Soft	
Type of pilot		Electrical	
Reset method		Mechanical spring	
Type of control		Piloted	
Manual override		Detenting, non-detenting	
Type of mounting		With through-hole	
Mounting position		Any	
Max. tightening torque of valve mounting	[Nm]	3.2	
Non-overlapping		Yes	
Switching status display		-	Yes, with socket
Standard nominal flow rate	1 → 2 [l/min]	1200	
b value		0.4	
C value	[l/sbar]	5.2	
Pneumatic connection	1, 3, 5 2, 4	G1/4, NPT-1/4 18	
Port pattern to NAMUR		Port pattern to NAMUR	
Conforms to standard		VDI/VDE 3845 NAMUR	
Product weight	[g]	333	387

# Solenoid valves VSNC

Technical data – 3/2-way or 5/2-way valve, convertible, single solenoid

Operating and environmental conditions		
	VSNC-FC-M52-MD-G14-F8 VSNC-FC-M52-MD-N14-F8	VSNC-FC-M52-MD-G14-F8-1B2
Operating medium	Compressed air to ISO 8573-1:2010 [7:4:4]	
Note on operating/pilot medium	Lubricated operation possible (in which case lubricated operation will always be required)	
Operating pressure [bar]	2.5 ... 10	
Ambient temperature [°C]	-20 ... +60	
Temperature of medium [°C]	-20 ... +60	
Corrosion resistance class CRC <sup>1)</sup>	2	

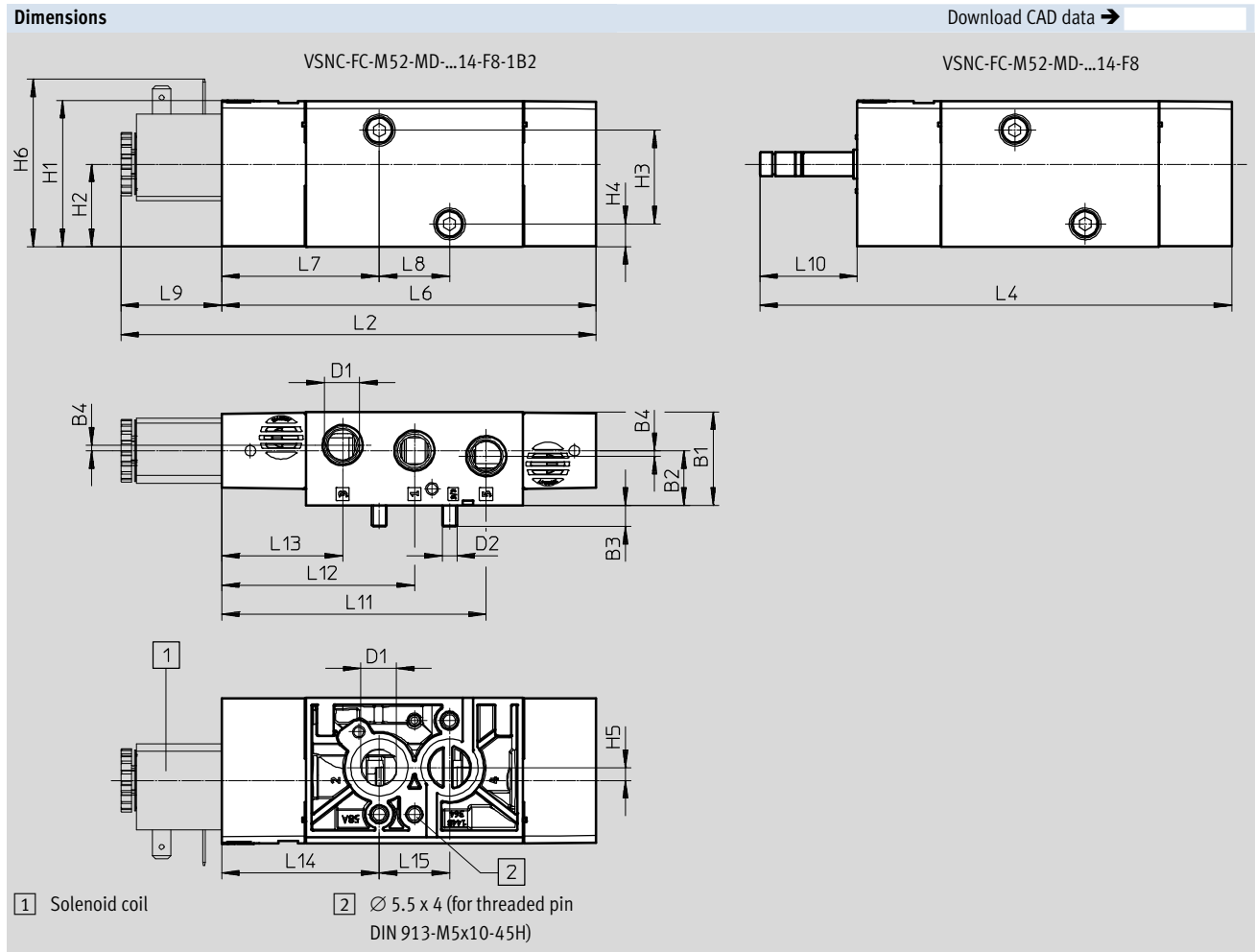
1) Corrosion resistance class CRC 2 to Festo standard FN 940070  
Moderate corrosion stress. Indoor applications in which condensation may occur. External visible parts with primarily decorative requirements for the surface and which are in direct contact with the ambient atmosphere typical for industrial applications.

Electrical data		
	VSNC-FC-M52-MD-G14-F8 VSNC-FC-M52-MD-N14-F8	VSNC-FC-M52-MD-G14-F8-1B2
Electrical connection	–	3-pin push-in connector, type B to industry standard (11 mm)
Coil characteristics, 24 V DC [W]	See solenoid coil, to be ordered separately	3.3
Permissible voltage fluctuations [%]	–	±10
Duty cycle [%]	–	100
Degree of protection	–	IP65
Switching time on [ms]	11	
Switching time off [ms]	38	

Materials	
1) Housing	Wrought aluminium alloy
2) Seals	NBR
–	RoHS compliant

# Solenoid valves VSNC

Technical data – 3/2-way or 5/2-way valve, convertible, single solenoid



Type	B1	B2	B3	B4	D1	D2	H1	H2	H3	H4	H5	H6
VSNC-FC-M52-MD-G14-F8	31.8	18.6	7.3	1.9	G $\frac{1}{4}$	M5	49.9	28.2	32	7.8	4.4	-
VSNC-FC-M52-MD-N14-F8					NPT $\frac{1}{4}$ -18							57.2
VSNC-FC-M52-MD-G14-F8-1B2					G $\frac{1}{4}$							

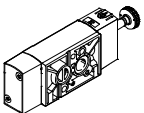
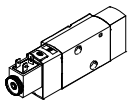
Type	L2	L4	L6	L7	L8	L9	L10	L11	L12	L13	L14	L15
VSNC-FC-M52-MD-G14-F8	162.2	161.1	127.8	53.8	24	34.4	33.3	90.3	65.8	41.3	53.8	24
VSNC-FC-M52-MD-N14-F8												
VSNC-FC-M52-MD-G14-F8-1B2												

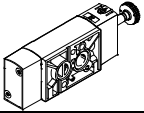


# Solenoid valves VSNC

Technical data – 3/2-way or 5/2-way valve, convertible, single solenoid

## ★ Core product range

Ordering data – Valves			Ordering data – Valves		
Directional control valve without solenoid coil			Directional control valve with 24 V DC solenoid coil, without socket		
	Part No.	Type		Part No.	Type
	★ 577257	VSNC-FC-M52-MD-G14-F8		★ 577295	VSNC-FC-M52-MD-G14-F8-1B2

Ordering data – Valves		
Directional control valve without solenoid coil		
	Part No.	Type
	577262	VSNC-FC-M52-MD-N14-F8

Festo core product range

- ★ Ready for dispatch from the Festo factory in 24 hours
- ☆ Ready for dispatch in 5 days maximum from stock