

PC ACCESSORIES

Order symbol Description

Back Panels (Galvanized steel, sheet thickness 1,5 mm)

EKIV 15	5.9 x 5.9 inch ▪ 150 x 150 mm
EKIV 23	6.7 x 10.6 inch ▪ 170 x 270 mm
EKIV 33	10.6 x 10.6 inch ▪ 270 x 270 mm
EKIV 43	14.6 x 10.6 inch ▪ 370 x 270 mm
EKIV 54	18.5 x 14.6 inch ▪ 470 x 370 mm
EKIV 64H	22.4 x 14.6 inch ▪ 570 x 370 mm



DIN-35 Mounting rails (Galvanized steel, rail height 7,5 mm)

TRH 15	1.4 x 4.8 inch ▪ 35 x 122 mm
EKIV 17	1.4 x 6.5 inch ▪ 35 x 166 mm
EKIV 27	1.4 x 10.5 inch ▪ 35 x 266 mm
EKIV 37	1.4 x 14.4 inch ▪ 35 x 366 mm
EKIV 47	1.4 x 18.3 inch ▪ 35 x 466 mm



Front panels (Aluminum, sheet thickness 1,5 mm)

FP A 23	6.5 x 10.6 inch ▪ 166 x 268 mm
FP A 33	10.5 x 10.6 inch ▪ 266 x 268 mm
FP A 43	10.5 x 14.5 inch ▪ 266 x 368 mm
FP A 54	18.4 x 14.4 inch ▪ 468 x 366 mm
FP A 64	22.4 x 14.4 inch ▪ 568 x 366 mm

Swing door sets

MB 12225 AL	Swing door kit ▪ for aluminum front panels
-------------	--

Hinges and wall mounting

MB CH SET	Hinge kit ▪ for CAB/Quick
FP 12017	Mounting foot kit (4 pcs) ▪ incl. screws
SP 12087	Corner plug, red



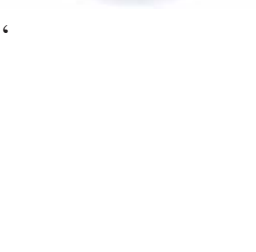
Pole mounting

PM 60	Pole mount kit ▪ pole diameter min 50 max 70 mm
PM 120	Pole mount kit ▪ pole diameter min 100 max 120 mm



DIN rail frame sets

DRF 23	DIN rail frame kit ▪ incl. a pair of metal profile bar, mounting screws and front panel holders
DRF 33	DIN rail frame kit ▪ incl. a pair of metal profile bar, mounting screws and front panel holders
DRF 43/44	DIN rail frame kit ▪ incl. a pair of metal profile bar, mounting screws and front panel holders
DRF 54	DIN rail frame kit ▪ incl. a pair of metal profile bar, mounting screws and front panel holders
DRF 63/64	DIN rail frame kit ▪ incl. a pair of metal profile bar, mounting screws and front panel holders



PC ACCESSORIES

Order symbol	Description
--------------	-------------

Spacers

FA 12053	Spacer 14 mm ▪ M5 self-cutting
FA 12052	Spacer 42 mm ▪ M5 self-cutting
M5x8	Mounting screw for spacer
MB 10686	Kit of 2 spacers including screws ▪ (15/34 mm)



Other accessories

MSM PT 5x10	Mounting screw
MB 12235 KEY	Plastic key for the lock

CAB technical information

Property	Polycarbonate (PC)
----------	--------------------

Ingress Protection (EN 60529)	IP 65
Impact Resistance (EN 62262)	IK 08
Temperature Range Celsius (short term) Fahrenheit	-40° . . .120°C -40° . . .250°F
Temperature Range Celsius (continuous) Fahrenheit	-40° . . .80°C -40° . . .175°F
Electrical Insulation	Totally insulated ☐
Light Gray Parts Color	RAL 7035 Industry Gray
Transparent Clear PC Cover	Smoked Gray
Hinges and Latches (PC)	RAL 7035
Gasket	PUR/EPDM
Enclosure Flammability Rating	Complies with UL 508
Glow Wire Test (IEC 695-2-1) Self -extinguishing (PC)	960°C
Non-toxicity	Halogen Free
UV resistance	Complies with UL 508
Chemical Resistance *	Good

Confirmity to standards

USA Enclosures for Electrical Equipment
UL Type 1, 4, 4X, 12 and 13; UL File E75645

Canada Industrial Control Equipment
Enclosures for Electrical Equipment/cUL

Europe Empty enclosures for low-voltage switchgear and controlgear assemblies EN 62208:2003 (50298:1998)

Europe Safety of Information Technology Equipment
EN 60950
RoHS directive 2002/95/EC

Russia GostR - Gost Russian certificate of conformity

Data subject to change without notice.

*Consult separate raw material data for more detailed information