

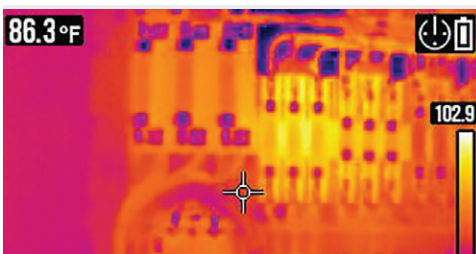


INDUSTRIAL IMAGING MULTIMETERS

FLIR DM284/285™

The FLIR DM284 and DM285 are industrial, all-in-one True RMS digital multimeters and thermal imagers that can show you exactly where a hot spot or temperature anomaly is for faster troubleshooting. Featuring Infrared Guided Measurement (IGM™) powered by a built-in 160 x 120 FLIR thermal imager, the meters visually guide you to the precise location of a problem. You'll pinpoint issues faster, more safely, and efficiently. Both multimeters are ideal for inspecting industrial-electrical, mechanical, HVAC/R, and electronic systems, and can be used for both benchtop electronics or in the field.

The DM285 uniquely features Bluetooth® which enables wireless data transfer by connecting to the FLIR Tools Mobile app on compatible mobile devices. The DM285 is also compatible with the new FLIR InSite™ workflow management tool that allows you to prepare efficient survey routes, maintain accurate documentation, share information with clients, and file instant reports.



WORK SAFER AND SMARTER

Thermal imaging allows you to quickly scan for overheating system components, then use the DMM test functions to troubleshoot and diagnose the fault

- Identify energized and faulty equipment from a safe distance with non-contact temperature measurement
- Streamline inspections and simplify data collection, sharing, and reporting by wirelessly connecting to the FLIR InSite professional workflow management tool*
- Save electrical parameter data and thermal images with onboard data storage*

TROUBLESHOOT CHALLENGING PROBLEMS EFFECTIVELY

Fully loaded with features for high and low voltage applications

- Solve challenging problems with the 18-function DMM including VFD mode, True RMS, LoZ, NCV, a built-in worklight, and laser pointer
- Measure voltage, current, frequency, resistance, continuity, diode, capacitance, and temperature
- Operate easily with an intuitive menu system

DESIGN AND FUNCTIONALITY

An all-in-one tool that's built to last

- Rely on the meters' drop-tested durability in any working condition
- Change the battery quickly and easily with the 'no tool' battery compartment*
- See readings clearly on the TFT display with a wide viewing angle*

*DM285 Only.

SPECIFICATIONS

| Thermal Imaging | DM284 | DM285 | Additional Measurements | DM284 | DM285 |
|----------------------------------|------------------------------------|----------------------------------|---|---|--|
| IR Resolution | 160 x 120 (19,200 pixels) | 160 x 120 (19,200 pixels) | Continuity Check | 600 Ω | 20 Ω and 200 Ω |
| Thermal Imaging Detector | FLIR Lepton® microbolometer | FLIR Lepton® microbolometer | Measuring Rate | 3 samples per second | 3 samples per second |
| Temperature Sensitivity | ≤ 150 mK | ≤ 150 mK | Min/Max/Avg | Yes | Yes |
| Emissivity Settings | 4 presets with custom adjustment | 4 presets with custom adjustment | General Information | | |
| Temperature Accuracy | 3°C or 3.5% | 3°C or 3.5% | Connectivity | – | Bluetooth® |
| Temperature Range | 14°F to 302°F (-10°C to 150°C) | 14°F to 302°F (-10°C to 150°C) | Data Logging & Storage | – | 10 sets of 40K scalar measurements, 100 images |
| Field of View | 46° x 35° | 50° x 38° | Auto Power Off | Yes | Yes |
| Laser Pointer | Yes | Yes | Worklights | Yes | Yes |
| Focus | Fixed | Fixed | Display Size | 2.8 in TFT screen | 2.8 in TFT screen |
| Thermal Imaging Palette | Iron, Rainbow, Grayscale | Iron, Rainbow, Grayscale | Battery | 4 AAA batteries; optional TA04 Li-Poly rechargeable battery | 3 AA batteries; optional TA04 Li-Poly rechargeable battery |
| Level & Span | Auto | Auto | Drop Test | 3 m | 3 m |
| Measurements-Both Models | | | IP Rating | IP54 | IP40 |
| True RMS | Yes | | Safety Category Rating | CAT III-1000V, CAT IV-600V | CAT III-1000V, CAT IV-600V |
| | Range | Basic Accuracy | Size (L x W x H) | 200 x 95 x 49 mm (7.9 x 3.7 x 1.9 in) | 200 x 95 x 49 mm (7.9 x 3.7 x 1.9 in) |
| AC / DC Volts | 1000 V | ±1.0% / 0.09% | Weight | 537 g (18.9 oz) | 537 g (18.9 oz) |
| AC / DC mVolt | 600.0 mV | ±1.0% / 0.5% | Warranty | 10 year on product and detector | 10 year on product and detector |
| VFD AC Volts | 1000 V | ±1.0% | Box Contents | | |
| AC / DC LoZ V | 1000 V | ±2.0% | Multimeter, L91 lithium batteries, silicone test leads, test lead storage/tripod accessory, Type-K thermocouple, alligator probes, soft carrying case | | |
| AC / DC Amps | 10.00 A | ±1.5% / 1.0% | Ordering Information | | |
| AC / DC mAmps | 400.0 mA | ±1.5% / 1.0% | Ordering Information | | Order # |
| AC / DC μAmps | 4,000 μA | ±1.0% | FLIR DM285 Industrial Imaging Multimeter with Datalogging, Connectivity, IGM | | 793950372876 |
| Resistance | 6.000 MΩ 50.00 MΩ | ±0.9% ±3.0% | FLIR DM284 Imaging True RMS Industrial Multimeter with IGM | | 793950372845 |
| Capacitance | 10.00 mF | ±1.9% | | | |
| Diode Test | 1.500 V | ±0.9% | | | |
| Flex Clamp Range | 3000 A AC (Optional TA72/74) | ±3.0% +5 digits | | | |
| Frequency Counter | 100.00 kHz | ±0.1% | | | |
| Temperature, Type-K Thermocouple | -40°F to 752.0°F -40°C to 400°C | ±1.0% + 5.4°F ±1.0% + 3°C | | | |



The World's Sixth Sense®