



FLIR MR160

Imaging Moisture Meter

The FLIR MR160 Imaging Moisture Meter is the *first of its kind*. Equipped with a built-in thermal camera, MR160 is the *only* moisture meter with the power to show you exactly where to measure.

Featuring **Infrared Guided Measurement (IGM™)** technology, the MR160 helps you quickly scan and target moisture issues, visually guiding you to the spot where you can confidently take measurements and analyze readings.

An integrated pinless sensor and an external pin probe provide the flexibility to take either intrusive or non-intrusive measurements. Built tough with an industry-leading warranty, the MR160 can serve as your go-to troubleshooting tool right out of the box – or as the perfect complement to any high resolution thermal camera you already own – helping you find hidden moisture issues and capture reliable data more efficiently.

IDENTIFY AND VERIFY WITH ONE TOOL.

First-ever thermal imaging moisture meter

- 80 x 60 Lepton® thermal imager powers IGM technology
- Document thermal images and moisture readings on one screen
- Review images and generate reports with free FLIR Tools software

TROUBLESHOOT QUICKLY.

Easily investigate insulation and moisture issues

- Pinless technology for fast non-intrusive measurements
- External pin probe included for contact moisture measurements
- Easy targeting with laser pointer and display cross-hairs

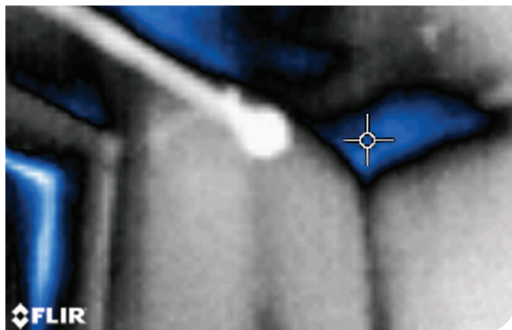
PORTABLE, TOUGH AND DURABLE.

Drop tested rugged design

- Industry-leading warranty
- Small form factor to conveniently carry with you
- Internal rechargeable battery with USB



Scanning ceiling & wall joint for moisture issues



IGM technology shows you cold spots, guiding you where to measure



The World's **Sixth Sense™**

Specifications

FLIR MR160: Imaging Moisture Meter	
Thermal imaging detector	FLIR Lepton® microbolometer
Image Calibration	Automatic
Thermal image resolution (W x H)	4800 pixels (80 x 60)
Spectral response	8–14µm
Field of view (W x H)	51° x 38°
Thermal sensitivity	<0.15°C
Image frame rate	9 Hz
Image Display	Color moisture alert
Minimum focus distance	10cm (4")
Moisture Measurement	
Pin moisture via external probe range (accuracy)	0–100% WME (± 5%)
Pin moisture groups	9 material groups
Pinless moisture range	0–100 relative measurement
Pinless Measurement Depth	0.75" (19mm) Max
Measurement resolution	0.1
Response time pinless	100ms
Response time pin mode	750ms
General information	
Display (W x H)	QVGA (320 x 240 pixel) 2.3" 64k color TFT
Saved image file format	BMP with measurement values overlaid
Stored image capacity	9999 images
Laser orientation	Single laser pointer to center of thermal image
Power requirements	Integrated rechargeable battery
Battery power - continuous run time	18 hours max
Battery power - typical usage	4 work weeks*
Battery	3.7 V, 3000 mAh Li-ion rechargeable via micro USB
Drop Test	9.8' (3m)
Certification standards	EN61326 (EMC), EN61010 (battery + charger), EN60825-1 class 2 (Laser)
Agency approvals	FCC class B, CE, UL
Warranty	2 Yr Product, 10 Yr Thermal detector**

*See FAQs at flir.com/MR160

** Register within 60 days of purchase at www.flir.com/testwarranty



Ordering Information	UPC	EAN
MR160	793950371602	0793950371602
MR05 Impact pin probe	793950370056	0793950370056
MR10 Protective case	793950370117	0793950370117
MR05-PINS1	793950371053	0793950371053
MR05-PINS2 (wide)	793950372050	0793950372050



MR02 Pin Probe included

Equipment described herein may require US Government authorization for export purposes. Diversion contrary to US law is prohibited. Imagery for illustration purposes only. Specifications are subject to change without notice. ©2015 FLIR Systems, Inc. All rights reserved. [Updated 11/17/15]



The World's Sixth Sense™