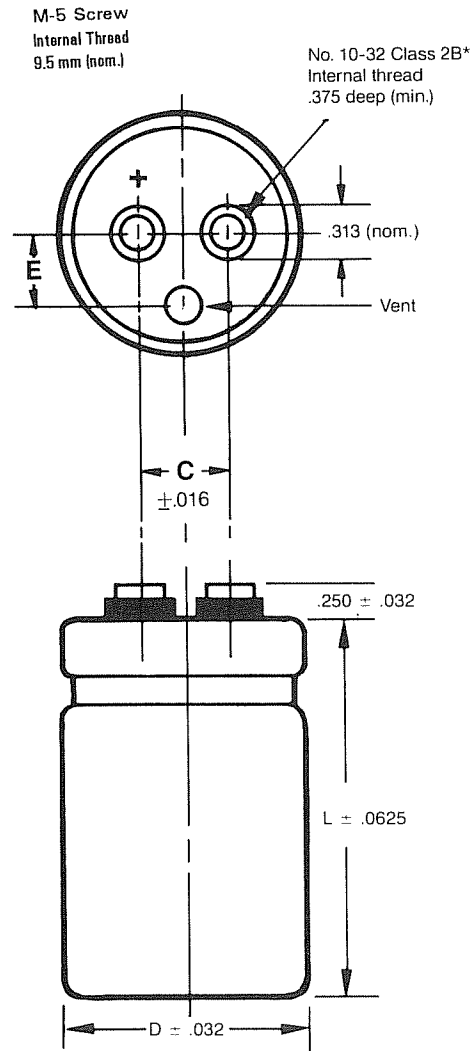


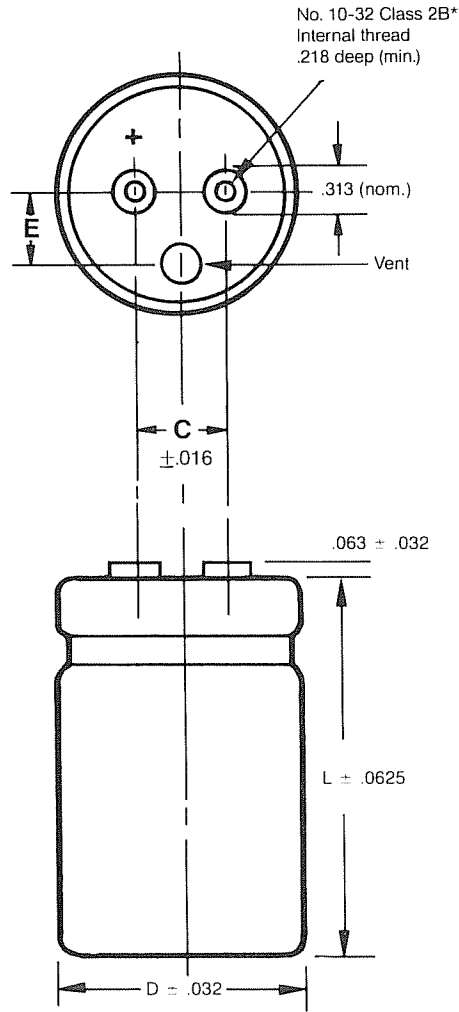
Capacitor Dimensions Uninsulated

(INCHES)

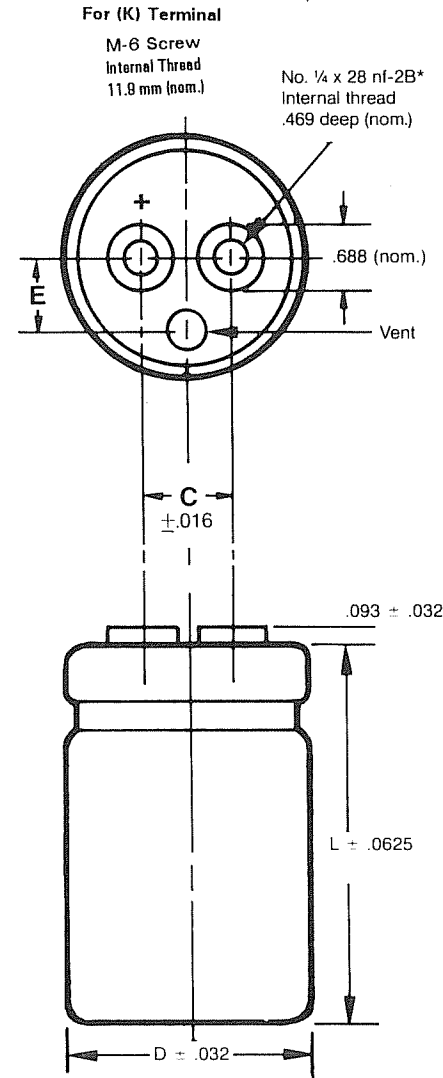
For (M) Terminal



**High Post (H)
Screw Insert
Terminal**



**Low Post (L)
Screw Insert
Terminal**



**High Current (D)
Screw Insert
Terminal**
2.500 and 3.000 dia. only
Metric Terminal High Current (K)

Metric Terminal High Post (M)

Case Diameter	C	E
1.375	.500	.391
1.750	.750	.406
2.000	.875	.500
2.500	1.125	.625
3.000	1.250	.750

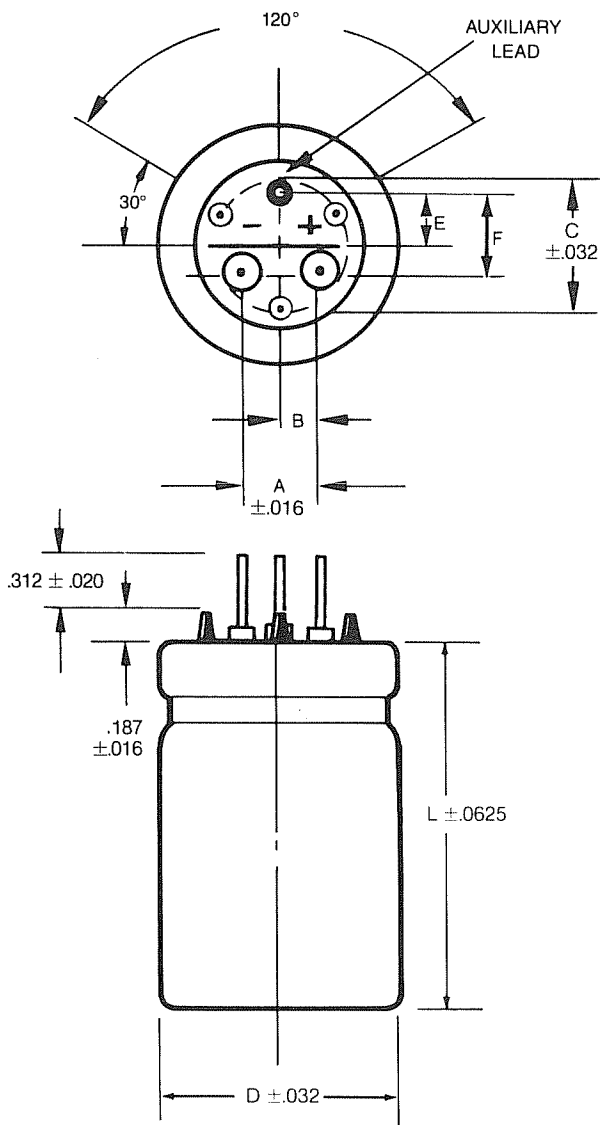
Insulation Type	Insulation Adder	
	D	L
.008 PVC	.016	.024
.012 PVC	.024	.040
.016 PVC	.032	.048

UL LISTED SLEEVING
AVAILABLE UPON REQUEST

*Also available in metric thread.

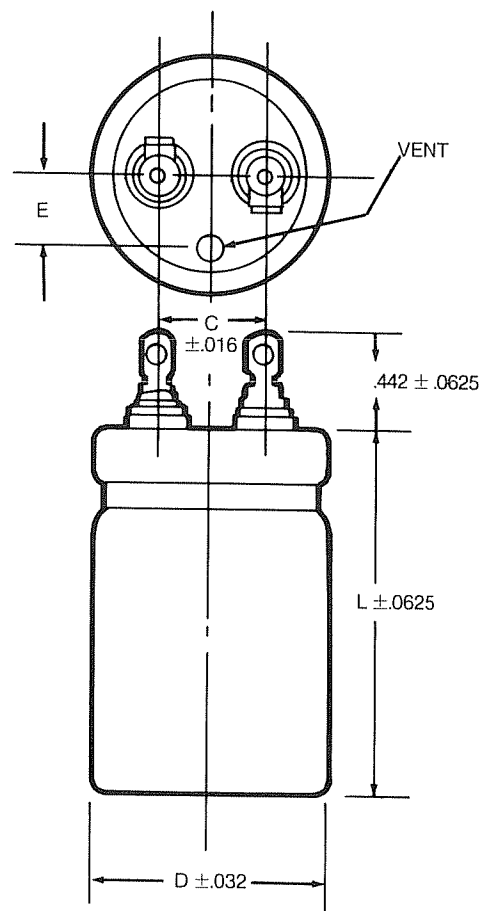
Capacitor Dimensions Uninsulated

(INCHES)



**PC (P)
Mounting
Terminal**

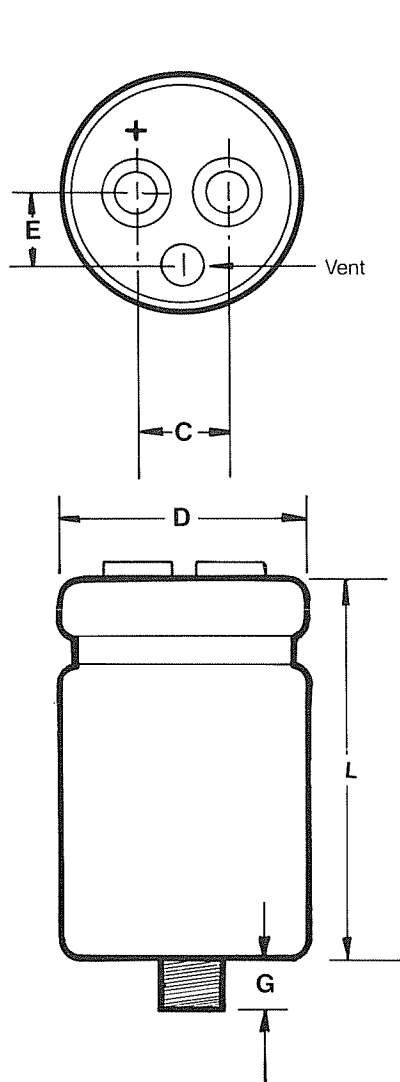
Case Diameter	A	B	C	E	F	Lead Size Nom. Diam.	AWG No.
1.375	0.500	0.250	0.937	0.375	0.550	0.064	14
1.750	0.700	0.350	1.250	0.525	0.900	0.064	14
2.000	0.800	0.400	1.500	0.575	1.000	0.064	14



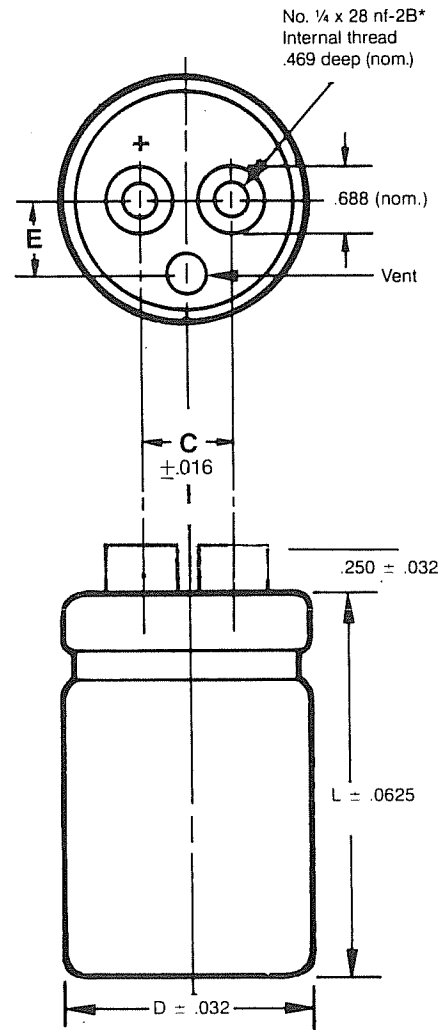
**Solder Lug(S)
Terminal**

Case & Diameter	C	E
1.375	.500	.391
1.750	.750	.406
2.000	.875	.500
2.500	1.125	.625
3.000	1.250	.750

Capacitor Dimensions Uninsulated



**STUDED BOTTOM
MOUNT CASE**



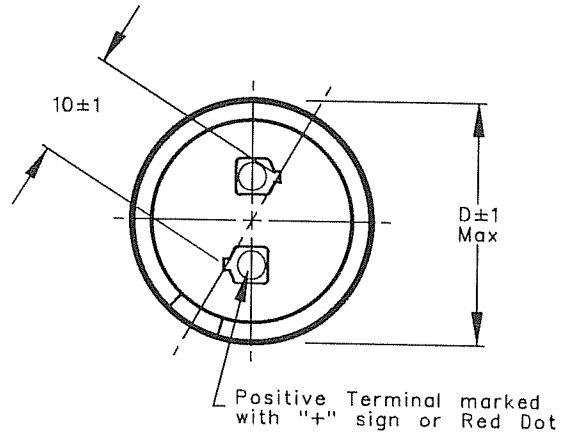
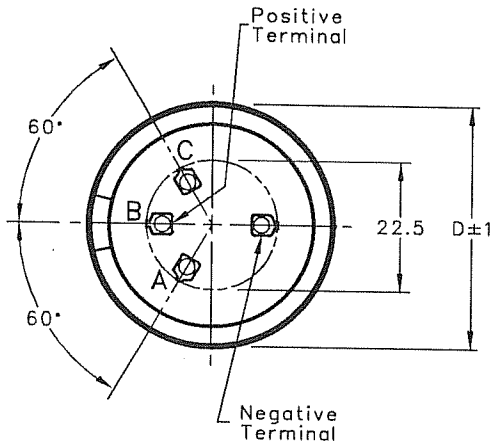
**High Current/
High Screw (N)
Terminal**

Case Diameter	Stud Thread Type	G (MM)
1.375	M8	12
1.750	M12	16
2.000	M12	16
2.500	M12	16
3.000	M12	16

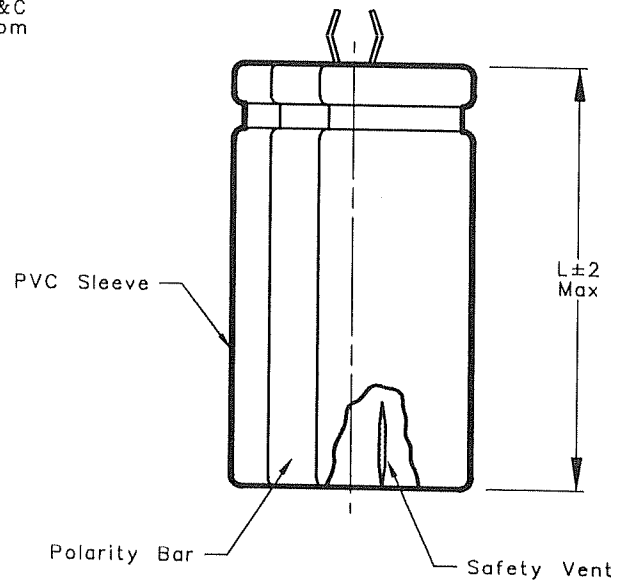
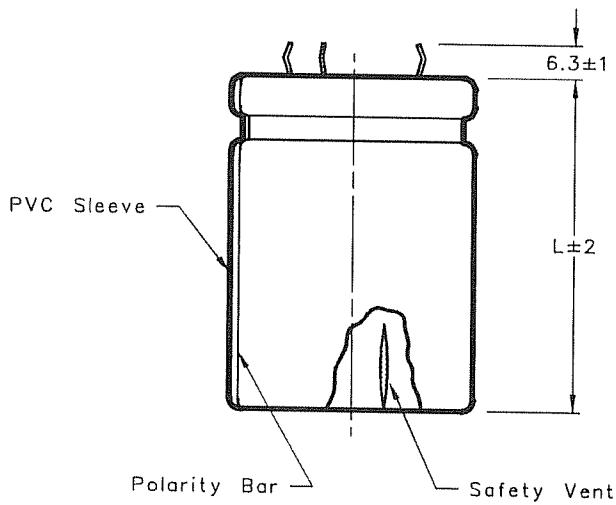
Studded Bottom Mount Case Available with High Post (H), Low Post (L), and High Current (D) Screw Insert Terminals

Capacitor Dimensions Uninsulated

(Millimeters)



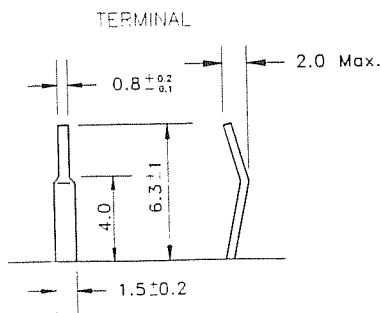
Remark: Dummy Terminals A&C have to be free from circuit wiring.



Snap-In Terminal (C)

Snap-In Terminal (A)

All units supplied with .008 PVC sleeving as standard.
 Add 0.406 mm to Diameter for standard sleeve
 Add 0.610 mm to Length for standard sleeving



Case Diameter	Dimension D
25 mm	25 mm
30 mm	30 mm
35 mm	35 mm
40 mm	40 mm