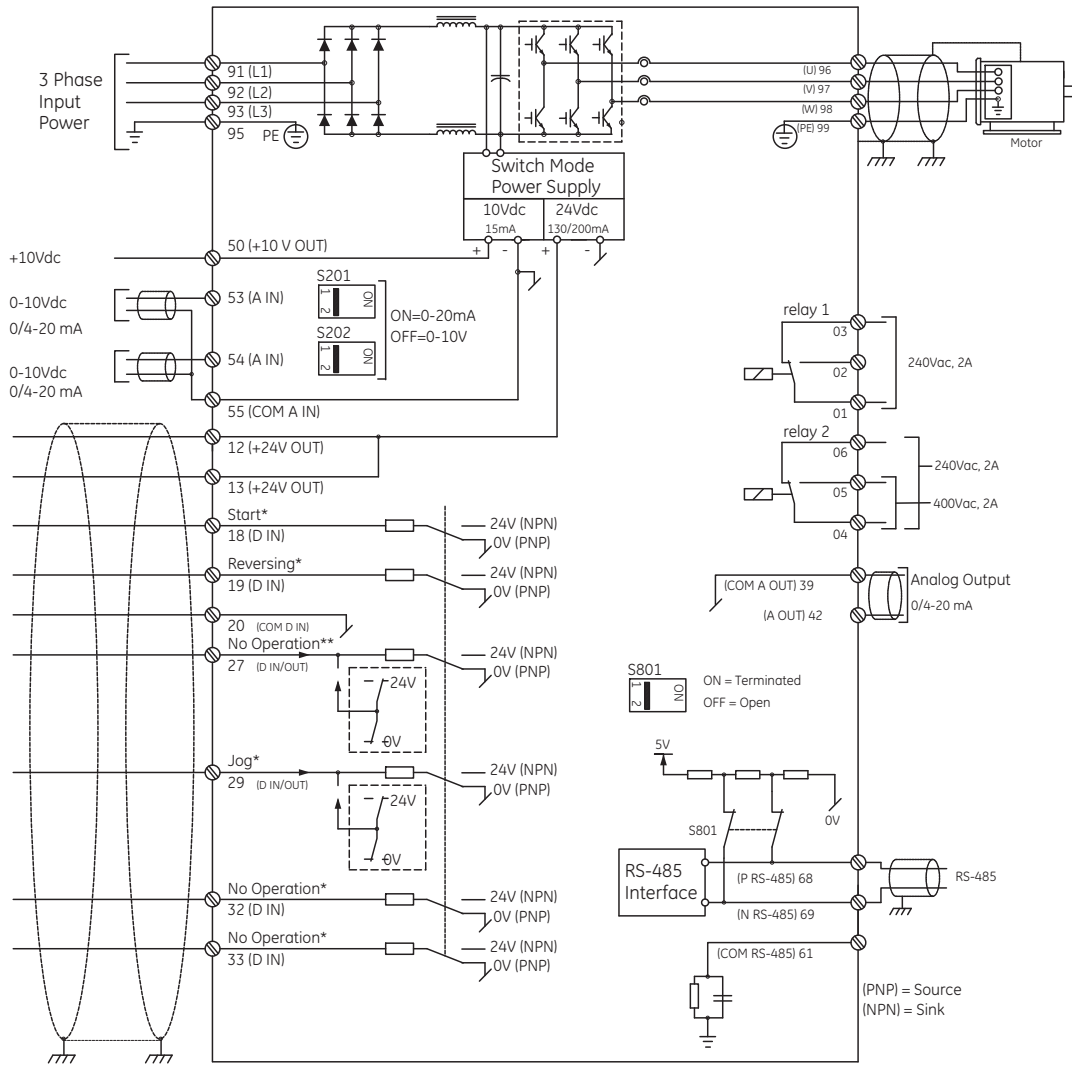


Drives

AF-600FP™ Fan and Pump Drive

Basic Wiring Diagrams

Section 15



* Indicates default setting; see Parameter Group E-## to re-program.

** Indicates default setting for version 1.10 drives or higher. Prior versions are set to Coast Inverse, indicating that terminal #27 must be Logic "High" to enable the drive to run. See Parameter E-03 Terminal 27 Digital Input to re-program.

