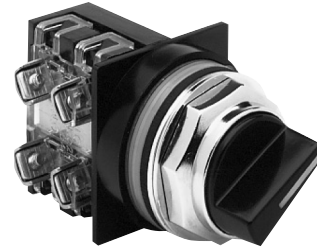


Pilot and Signaling Devices

Heavy-Duty 30.5 mm Watertight/Oiltight Selector Switches

CR104P

Knob Operated
 Non-Illuminated
 600 Volts Max. AC/DC
 10 Amperes Continuous



Knob-Operated Selector Switch

Units are supplied factory-assembled when ordered with contact block.

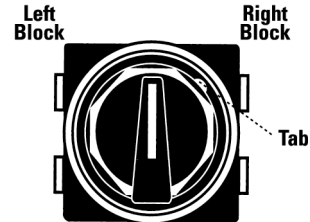
Product Number and price do not include nameplate. All nameplates must be ordered as a separate item.

Suitable for use in NEMA Type 1, 3, 3R, 4, 4X, 12, and 13 applications, when mounted in enclosures rated for those same applications. For some NEMA Type 4X applications, protective caps will improve corrosion resistance.

2-Position - Black Knob¹

Release Type	2 Position Cam Code	Contact Configuration	Product Number ¹	List Price GO-10P1
Maintained	1	None	CR104PSG21B	\$22.20
Maintained	1	1NO-1NC	CR104PSG21B91	\$40.20
Maintained	1	2NO-2NC	CR104PSG21B92	\$58.20
Spring Return L → C	2	None	CR104PSG12B	\$34.20
Spring Return L → C	2	1NO-1NC	CR104PSG12B91	\$52.20
Spring Return L → C	2	2NO-2NC	CR104PSG12B92	\$70.20
Spring Return R → C	3	None	CR104PSG63B	\$34.20
Spring Return R → C	3	1NO-1NC	CR104PSG63B91	\$52.20
Spring Return R → C	3	2NO-2NC	CR104PSG63B92	\$70.20

¹To order knob in a color other than black, replace the "B" in listed Product Numbers with E (Yellow), G (Green), L (Blue), or R (Red).



Contacts viewed from front of panel.

2-Position Selector Switches - Non-Illuminated

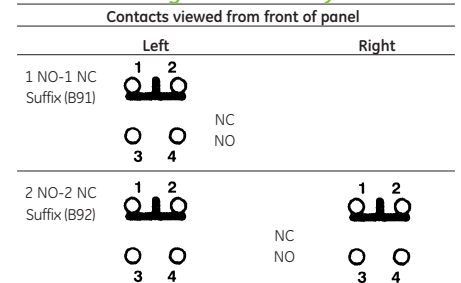
Operator Position	Cam #1		Cam #2		Cam #3		
	Type of Contact Block	Mounting Location Left/Right	Type of Contact Block	Mounting Location Left/Right	Type of Contact Block	Mounting Location Left/Right	
O	-	X	NO	L or R	-	-	
X	-	O	NC	L or R	-	-	
Contact State	X	O	-	-	NO	L or R	
	O	X	-	-	NC	L or R	
	-	O	X	-	-	NO	L or R
	-	X	O	-	-	NC	L or R

- : This position is nonexistent or is a "pass through".

In the product number of a selector switch, the cam is identified by the fifth figure after the "104".

Example: CR104PSG2 1 B, the cam number is 1.

Schematic Diagrams - Factory Forms



Numbers and letters are molded into blocks at terminals.

3-Position - Black Knob¹ - Maintained

Release Type	3 Position Cam Code	Contact Configuration	Product Number ¹	List Price GO-10P1
Maintained	4	None	CR104PSG34B	\$22.20
Maintained	4	1NO-1NC	CR104PSG34B91	\$40.20
Maintained	4	2NO-2NC	CR104PSG34B92	\$58.20
Maintained	2	None	CR104PSG32B	\$22.20
Maintained	2	1NO-1NC	CR104PSG32B91	\$40.20
Maintained	2	2NO-2NC	CR104PSG32B92	\$58.20
Maintained	3	None	CR104PSG33B	\$22.20
Maintained	3	1NO-1NC	CR104PSG33B91	\$40.20
Maintained	3	2NO-2NC	CR104PSG33B92	\$58.20
Maintained	5	None	CR104PSG35B	\$22.20
Maintained	5	2NO-2NC	CR104PSG35B92	\$58.20
Maintained	6	None	CR104PSG36B	\$22.20
Maintained	6	2NO-2NC	CR104PSG36B92	\$58.20

3-Position - Black Knob¹ - Spring Return L→C

Release Type	3 Position Cam Code	Contact Configuration	Product Number ¹	List Price GO-10P1
Spring Return L → C	4	None	CR104PSG74B	\$34.20
Spring Return L → C	4	1NO-1NC	CR104PSG74B91	\$52.20
Spring Return L → C	4	2NO-2NC	CR104PSG74B92	\$70.20
Spring Return L → C	2	None	CR104PSG72B	\$34.20
Spring Return L → C	2	1NO-1NC	CR104PSG72B91	\$52.20
Spring Return L → C	2	2NO-2NC	CR104PSG72B92	\$70.20
Spring Return L → C	3	None	CR104PSG73B	\$34.20
Spring Return L → C	3	1NO-1NC	CR104PSG73B91	\$52.20
Spring Return L → C	3	2NO-2NC	CR104PSG73B92	\$70.20
Spring Return L → C	5	None	CR104PSG75B	\$34.20
Spring Return L → C	5	2NO-2NC	CR104PSG75B92	\$70.20
Spring Return L → C	6	None	CR104PSG76B	\$34.20
Spring Return L → C	6	2NO-2NC	CR104PSG76B92	\$70.20

¹To order knob in a color other than black, replace the "B" in listed Product Numbers with E (Yellow), G (Green), L (Blue), or R (Red).

3-Position Selector Switches - Non-Illuminated

Operator Position	Cam #4		Cam #2		Cam #3		Cam #5		Cam #6		
	Type of Contact Block	Mounting Location Left/Right	Type of Contact Block	Mounting Location Left/Right	Type of Contact Block	Mounting Location Left/Right	Type of Contact Block	Mounting Location Left/Right	Type of Contact Block	Mounting Location Left/Right	
O	O	X	NO	L or R	-	-	NO	L or R	NO	Left	
O	X	O	-	-	NC	L or R	NC	L or R	NC	Right	
Contact State	X	O	O	NC	L or R	NO	L or R	-	NC	Left	
	X	X	O	-	-	-	-	-	-	NC	Left
	O	X	X	-	-	-	-	-	-	NC	Right
	O	X	X	-	-	-	-	-	-	NC	Right

In the product number of a selector switch, the cam is identified by the fifth figure after the "104".

Example: CR104PSG2 1 B, the cam number is 1.

