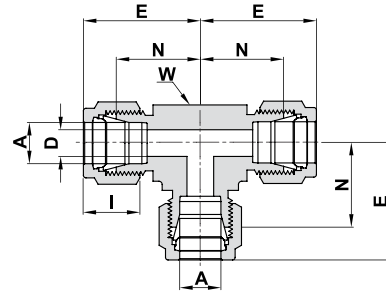


764 L UNION TEE



ALL TUBE (METRIC)

Ordering Information	A Tube O.D.		D		W Wrench Flat		N		E		I	
	mm	mm	mm	mm	inch	mm	mm	mm	mm	mm	mm	mm
764L _ 2	2		1.7		3/8	9.5		15.7		22.3		12.9
764L _ 3	3		2.4		3/8	9.5		15.7		22.3		12.9
764L _ 4	4		2.4		1/2	12.7		18.8		25.4		13.7
764L _ 6	6		4.8		1/2	12.7		19.6		27.0		15.3
764L _ 8	8		6.4		5/8	15.9		22.4		29.9		16.2
764L _ 10	10		7.9		11/16	17.5		23.9		31.5		17.2
764L _ 12	12		9.5		13/16	20.6		25.9		36.0		22.8
764L _ 14	14		11.1		15/16	23.8		28.7		38.8		24.4
764L _ 15	15		11.9		15/16	23.8		28.7		38.8		24.4
764L _ 16	16		12.7		15/16	23.8		28.7		38.8		24.4
764L _ 18	18		15.1		1 1/16	27.0		29.7		39.8		24.4
764L _ 20	20		15.9		1 3/8	34.9		34.5		44.6		26.0
764L _ 22	22		18.3		1 3/8	34.9		34.5		44.6		26.0
764L _ 25	25		21.8		1 3/8	34.9		36.8		49.1		31.3
764L _ 38	*38		33.7		-	55.0		56.4		84.0		49.4
764L _ 50	*50		45.2		2 3/4	69.9		68.9		106.0		65.0

ALL TUBE (INCH)

Ordering Information	A Tube O.D.		D		W Wrench Flat		N		E		I	
	inch	mm	inch	mm	inch	mm	inch	mm	inch	mm	inch	mm
764L _ 1/16	1/16	1.58	.05	1.27	3/8	9.5	.55	14.00	.70	17.80	.34	8.6
764L _ 1/8	1/8	3.17	.09	2.28	3/8	9.5	.62	15.74	.88	22.35	.50	12.7
764L _ 3/16	3/16	4.76	.12	3.04	1/2	12.7	.70	17.80	.96	24.40	.54	13.7
764L _ 1/4	1/4	6.35	.19	4.82	1/2	12.7	.77	19.55	1.06	26.90	.60	15.2
764L _ 5/16	5/16	7.93	.25	6.35	5/8	15.9	.88	22.35	1.17	29.71	.64	16.2
764L _ 3/8	3/8	9.52	.28	7.11	5/8	15.9	.91	23.11	1.20	30.48	.66	16.8
764L _ 1/2	1/2	12.70	.41	10.41	13/16	20.6	1.02	25.90	1.42	36.06	.90	22.9
764L _ 5/8	5/8	15.87	.50	12.70	15/16	23.8	1.13	28.70	1.53	38.90	.96	24.4
764L _ 3/4	3/4	19.05	.62	15.74	1 1/16	27.0	1.17	29.70	1.57	39.90	.96	24.4
764L _ 7/8	7/8	22.22	.72	18.29	1 3/8	34.9	1.36	34.54	1.76	44.70	1.02	25.9
764L _ 1	1	25.40	.88	22.35	1 3/8	34.9	1.45	36.83	1.93	49.00	1.23	31.2
764L _ 1 1/4	*1 1/4	31.75	1.09	27.7	1 11/16	42.9	1.75	44.50	2.62	66.55	1.62	41.2
764L _ 1 1/2	*1 1/2	38.10	1.34	34.0	2	50.8	2.00	50.80	3.07	77.98	1.97	50.0
764L _ 2	*2	50.80	1.81	45.97	2 3/4	69.9	2.75	69.85	4.22	107.19	2.66	67.6

* Including low friction paste, see page 91

"D" - Dimension is minimum opening. Dimensions are for reference only, and are subject to change without notice.