

Routing, Protection and Insulation

Surface Raceway

Low Voltage Raceway Fittings and Junction Boxes

End Caps

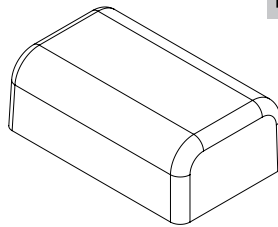
HellermannTyton surface raceway systems are the ideal solution for routing communication and power cables. No need to break into existing walls - raceway systems are designed to route cable along wall surfaces. Made of a PVC material, components are durable and affordable; and the one-piece construction and adhesive tape backing make positioning and mounting easy. HellermannTyton offers a low voltage TSR system and a power rated TSRP system that are available in three different diameters to accommodate different cable and wire bundle and conduit sizes. Both systems include a complete line of fittings and junction boxes that allow for clean and professional installations. TSR surface raceway systems can be used to route a variety of communication cable, including high speed UTP and fiber optic cable.

Features and Benefits

- Tamper resistant covers with hidden latch provide security while allowing quick entry for cable maintenance.
- PVC construction is lightweight, durable and more affordable than metallic raceway systems.
- Flexible hinge is designed to reduce stress cracking and discoloration from repeated opening and closing.
- Systems and fittings are available in white, office white and ivory to coordinate with a variety of décor.
- Fittings incorporate a minimum 1" bend radius to meet TIA/EIA 568-B and 569-A standards.



MATERIAL	Polyvinylchloride (PVC)
Flammability	UL 94 V0
Operating Temperature	+122°F (+50°C)



PART NO.	TYPE	Description	Color	Pkg. Qty.
TSR1I-36	TSR1-36	End Cap, 3/4"	Ivory	1
TSR1FW-36		End Cap, 3/4"	Office White	1
TSR1W-36		End Cap, 3/4"	White	1
TSR2I-36	TSR2-36	End Cap, 1-1/4"	Ivory	1
TSR2FW-36		End Cap, 1-1/4"	Office White	1
TSR2W-36		End Cap, 1-1/4"	White	1
TSR3I-36	TSR3-36	End Cap, 1-3/4"	Ivory	1
TSR3FW-36		End Cap, 1-3/4"	Office White	1
TSR3W-36		End Cap, 1-3/4"	White	1

Dimensions are approximate and subject to technical changes. Use Part No. for ordering and Type for specification purposes.