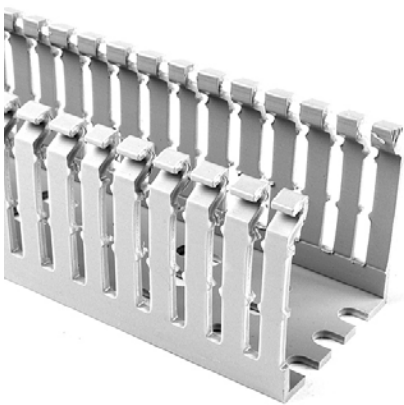


Specification Sheet

Part Number: 181-00153



High Density Slotted Wall Wiring Duct, 4" x 3", Adhesive, PVC, Gray, 120ft/Carton

Article Number	181-00153
Type	SLHDA4X3
Color	Gray (GY)
Features & Benefits	<ul style="list-style-type: none">• Narrow fingers reduce fanning of the wires to the terminal blocks, presenting a neater appearance.• Each finger is provided with a double restriction to hold wires in the bottom portion of the duct, allowing for easier installation.• Mounting holes are uniform in size to the solid and slotted wall duct, but are offered every 2 inches to accommodate compact designs and ease installation.
Quantity Per	carton

Product Description

Pro-Duct high density, slotted wall, wiring duct features narrow fingers, equaling a 2 to 1 finger ratio compared to standard slotted wiring duct. With the narrow fingers, compact designs and components are more easily accommodated.

Short Description	High Density Slotted Wall Wiring Duct, 4" x 3", Adhesive, PVC, Gray, 120ft/Carton
Global Part Name	SLHDA4X3-PVC-GY
Technical Description	Adhesive
Length L (Imperial)	6.0
Length L (Metric)	1.83
Width W (Imperial)	4.0
Width W (Metric)	101.6
Height H (Imperial)	3.07
Height H (Metric)	77.9
Mounting Hole Centers (Imperial)	2.0
Material	Polyvinylchloride (PVC)
Material Shortcut	PVC
Flammability	Self-Extinguishing
Halogen free	No
Operating Temperature (Metric)	+122°F (+50°C)

Reach Complaint(Article 33)

No

ROHS Complaint

Yes

Certification/Specification WEB

EN 50085-2-3_1A CSA EN 50085-1:2005 + A1:2013 UL

UL Recognized (US)

Yes

Package Quantity(Imperial)

120

Package Quantity (Metric)

36.58

Customs Number

3925900000